



ITEM# UJWA252

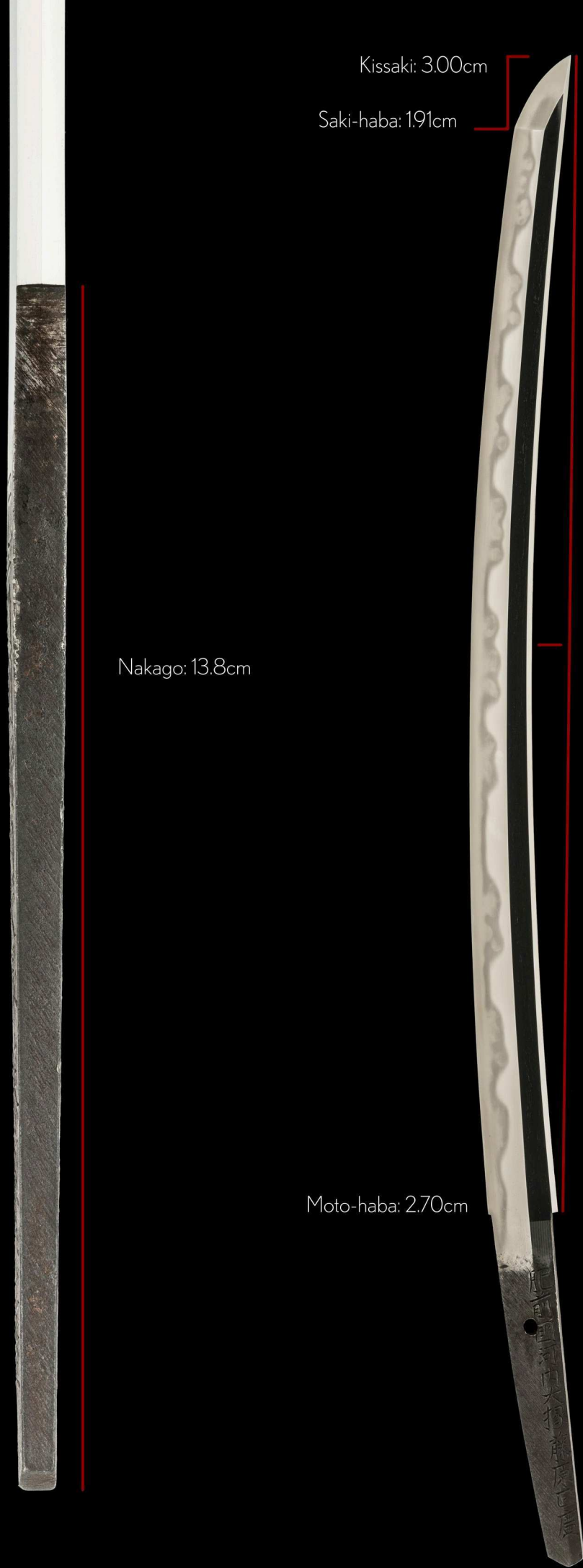
A SHODAI MASAHIRO WAKIZASHI

SIGNED & DATED, SHINTÔ PERIOD (KAN'EI ERA: AUGUST 1643)

Swordsmith:	<i>Hizen no Kuni Kawachi Daijô Fujiwara Masahiro (shodai, first generation)</i>
Measurements:	Length: 45.7cm (<i>ubu</i>) Curvature: 1.2cm Motohaba: 2.7cm
Jihada:	<i>Ko-mokume leading to Hizen konuka-hada, thick nie-deki and ji-nie</i>
Hamon:	<i>Gorgeous gunome chôji-midare with excellent kinsuji, sunagashi</i>
Certificate #1:	NBTHK Tokubetsu Hozon (<i>Especially Worthy of Preservation</i>)
Certificate #2:	Yûryô Naru Saku Nari (<i>rated Excellent Work by Fujishiro Matsuo</i>)
Fujishiro:	Jô-saku (<i>a superior swordsmith</i>)
Authentication:	Sayagaki by Nozomi-san (<i>shodô artist</i>)
Sharpness:	Wazamonô (<i>rated as a maker of sharp swords</i>)
Included:	Shirasaya, stand, kit, booklet, printed description

SOLD

Maestro *Hizen* swordsmith **Kawachi Masahiro** was born *Sadenjiro* in 1607 and died at only 59 in 1665. He is the son of *Yoshinobu* who was the adopted son of the great first generation *shodai Tadayoshi*. This beautiful wakizashi is a wonderful reference piece as it has been dated to August of 1643, when Masahiro was 36 years old. It is classic Masahiro in every way with a gorgeous *gunome-chôji-midare hamon* with dramatic *tani* (valleys) and plenty of *hataraki* to enjoy such as *kinsuji*, *sunagashi* and *tobiyaki*. Comes with rare certificate of authenticity by *Fujishiro Matsuo*. Enjoy in *shirasaya* or consider building a custom *koshirae* or even *daishô koshirae* with a well-suited katana.



Saki-kasane: 4.8mm

Kissaki: 3.00cm

Saki-haba: 1.91cm

Moto-kasane: 5.7mm

Nagasa: 45.7cm

Nakago: 13.8cm

Sori: 1.20cm

Omosa: 440g

Moto-haba: 2.70cm

Mekugi-ana: 1

Kawachi Masahiro was born *Sadenjiro* in 1607 and died at only 59 in 1665. He and *Shôdai Yukihiro* are sons of *Yoshinobu* who himself was the adopted son of the great *Shôdai* (first generation) *Tadayoshi*.

He began signing as *Masanaga* and even signed for *Shôdai Tadayoshi* when he became ill (known as *dai-meï*). Recognizing his clear talent, his employer *Lord Nabeshima Katsushige* suggested he change his name to *Masahiro*, thus becoming *Shôdai Masahiro*.

A magnificent *gunome-choji-midare hamon* over a tightly forged *konuka-hada* captures the heart and imagination. This is a classic wakizashi that is dated during the early Edo period to August 1643 making it an excellent reference piece.



Location: *Hizen Province*

Title: *Kawachi Daijô* (Lord of Kawachi province)

Family name: *Fujiwara*

Swordsmith: *Masahiro* (first generation)

ubu-nakago (original, unaltered tang)

sujikai-yasurime (diagonal file marks)



肥 (Hi)

前 (zen, no)

國 (kuni)

河 (Kawa)

内 (chi)

大 (Dai)

掾 (jô)

藤 (Fuji)

原 (wara)

正 (Masa)

廣 (hiro)

Kan'ei nijûnen hachigatsu kichijitsu

Blade is dated to a lucky day in the eighth month
in the 20th year of *Kan'ei* era (August 1643)

(Kan) 寛
(ei) 永
(nijû) 廿
(nen) 年
(hachi) 八
(gatsu) 月
(kichi) 吉
(jitsu) 日





Dated works of *shodai Masahiro* are not often found making this a great reference piece.

Masahiro was 36 when he crafted this wakizashi, about midway through his smithing time span.

03202106

No 1016179



右は當協會に於て審査の結果特別保存刀劍と
鑑定しこれを証する
令和三年八月二十七日
公益財団法人日本美術刀劍保存協會



一脇指 銘 肥前国河内大掾藤原正広
寛永廿年八月吉日

長 一尺五寸一分強

鑑定書

東京都 教育委員会
第 323367 号
令和3年5月11日

NBTHK Tokubetsu Hozon Certificate of Designation

A sword designated as *Especially Worthy of Conservation*
by the Society for the Preservation of the Japan Art Sword

Issued in the 3rd year of Reiwa (2021), August 27th

One, Wakizashi

Mei (signature)

Hizen no Kuni Kawachi Daijō Fujiwara Masahiro
Kan'ei nijūnen hachigatsu kichijitsu
(Dated 8th month in 20th year of Kan'ei era, August 1643)

Nagasa (length)

1-shaku 5-sun 1-bu kyō (45.7cm)

Nihon Bijutsu Token Hozon Kyokai
(NBTHK)



Yûryô Naru Saku Nari Certificate of Designation

A sword designated as *Excellent Work*

Issued in the 7th year of Heisei (1995), December 25th

One, Wakizashi

Mei (signature)

Hizen no Kuni Kawachi Daijô Fujiwara Masahiro

Kan'ei nijûnen hachigatsu kichijitsu

(Dated 8th month in 20th year of Kan'ei era, August 1643)

Nagasa (length)

1-shaku 5-sun 1-bu 3-rin (45.7cm)

Signed with stamped by
Fujishiro Matsuo



肥前国河内大掾藤原正広

肥前国河内大掾藤原正広
Hizen no Kuni Kawachi Daijô Fujiwara Masahiro
Kawachi Daijô Fujiwara Masahiro from Hizen Province

寛永廿年八月吉日

寛永廿年八月吉日
Kan'ei nijûnen hachigatsu kichijitsu
On a lucky day in the eighth month of Kan'ei 20 (1643)

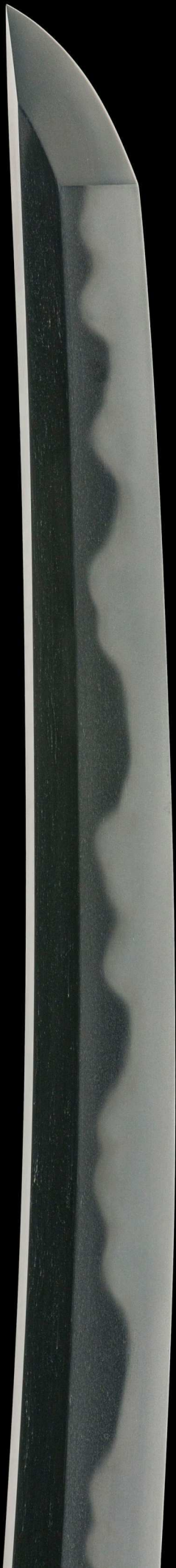
刃長壹尺五寸一分強有之

刃長壹尺五寸一分強有之
Hachô 1-shaku 5-sun 1-bu kyô kore ari
Blade length 45.7 cm

令和六甲辰年
臯月吉日誌之

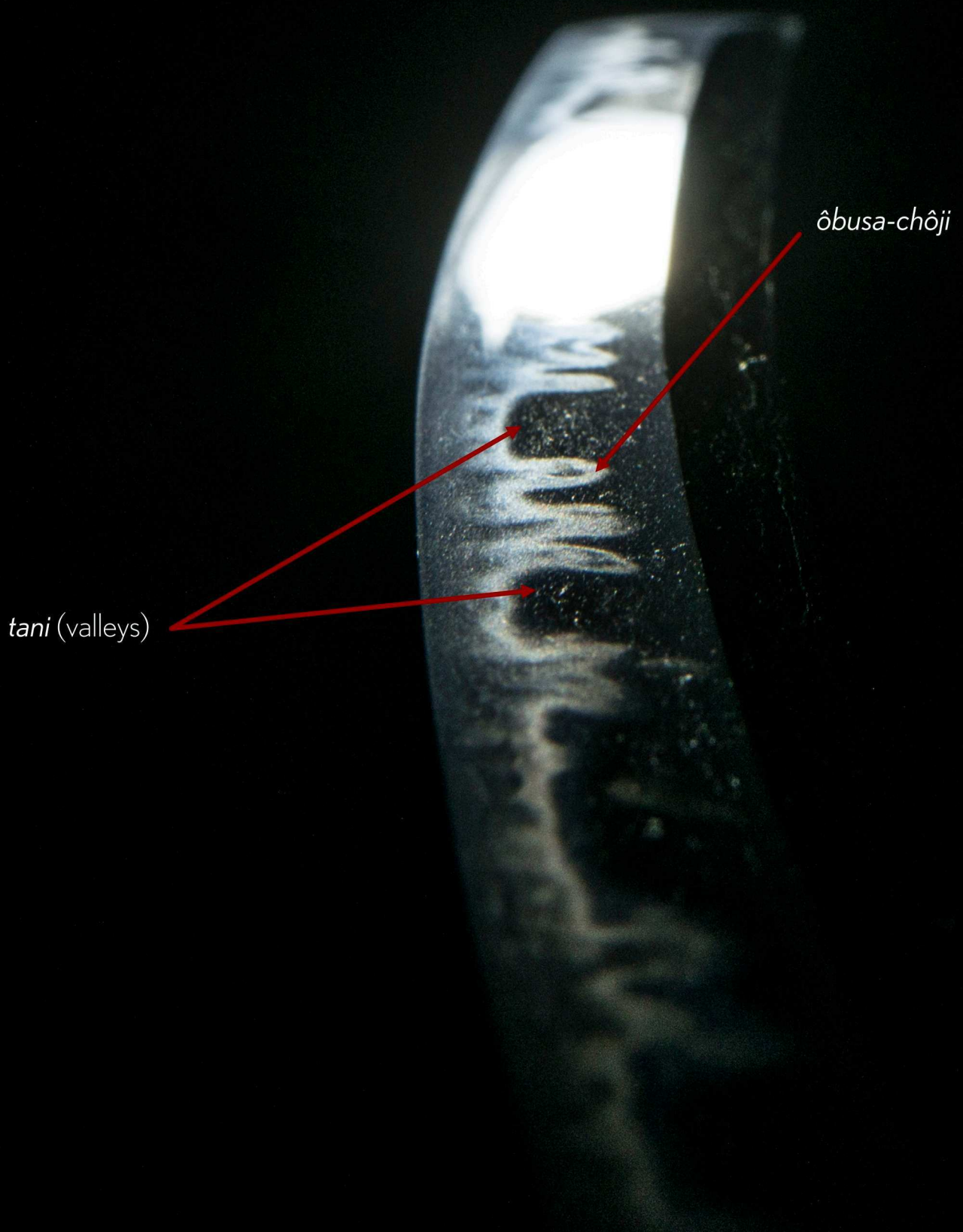
令和六甲辰年臯月吉日誌之
Reiwa roku kinoe-tatsudoshi Satsuki kichijitsu kore o shirusu
Written on a lucky day in May of Reiwa 6, the year of the dragon (2024)





A bright, booming *gunome-chôji midare hamon* dramatic valleys called *tani*.

Clusters of long tasselled *chôji* reminiscent of the *Fukuoka-Ichimonji* school also feature prominently.



tani (valleys)

ôbusa-chôji

Tama, a jewel-like ball forms a spot of *tobiyaki*.



Long spectacular *nie* lines of *kinsuji* rip through the hamon.

kinsuji





The sheer quality of this wakizashi shines through.

Enjoy this sword in shirasaya, or consider creating a custom koshirae which Unique Japan can assist you with.



Shirasaya
(protective scabbard)

肥前国河内大掾藤原正広

寛永廿年八月吉日

刃長壹尺五寸一分強有之

令和六甲辰年
臯月吉日誌之



gold wrapped *niju-habaki*
with crisp file marks

ARIGATO!

THANK YOU FOR DOWNLOADING OUR CATALOGUE.
WE LOOK FORWARD TO SERVING YOU.



Nelson and his karate sensei, Ozel Osman

PLEASE JOIN OUR VIP MAILING LIST TO BE
INFORMED OF RECENTLY ACQUIRED SWORDS.

EMAIL US AT SERVICE@UNIQUEJAPAN.COM

UNIQUEJAPAN.COM

[RETURN TO INDEX PAGE](#)