



ITEM# UJWA238

## A YASUSADA '2-BODY CUTTING TEST' WAKIZASHI SIGNED WITH GOLD INLAY, EARLY EDO PERIOD (KANBUN ERA, 1661~1664)

**Swordsmith:** *Yamato no Kami Yasusada (first generation)*  
**Gold inlay (test):** *Futatsudo kiriotoshi Yamano Ka'emon Nagahisa*  
**Measurements:** **Length:** 47.9cm (ubu)      **Curvature:** 0.5cm      **Moto-haba:** 2.73cm  
**Jihada:** *Ko-itame with ji-nie, masame-hada in shinogi-ji, chikei*  
**Hamon:** *Bright suguha mixed with ashi and kinsuji*  
**Certificate #1:** **NBTHK Tokubetsu Hozon** (a sword Especially Worthy of Conservation)  
**Fujishiro rank:** **Jo-saku** (a superior smith)  
**Cutting ability:** **Ryo-Wazamono** (maker of highly sharp swords)  
**Included:** Shirasaya, bags, stand, kit, DVD, printed description

**SOLD**

This commanding wakizashi was crafted by Shinto maestro *Yamato no Kami Yasusada*. It is said that Yasusada is originally from *Echizen province* and studied under *Shodai Yasutsugu*. Another theory states he travelled to *Edo (Tokyo)* by way of the *Kishu Ishido School*. Yasusada enjoyed a close relationship with the great *tameshigiri* (cutting test) master *Yamano Ka'emon Nagahisa*.

This daisho-sized wakizashi is a testament to the remarkable sharpness of Yasusada's swords as this blade severed cleanly through *two deceased convicted criminals in one stroke* by *Nagahisa*. The sword has a lovely tapered shape with a well-forged *itame-hada* and shining *ji-nie*. There is a calculating quickness to this blade with a rare and brilliant *suguha hamon* with intermittent *ashi*.



Saki-kasane: 3.9mm

Moto-kasane: 6.2mm

Omosa: 425g

Kissaki: 3.15cm

Saki-haba: 1.84cm

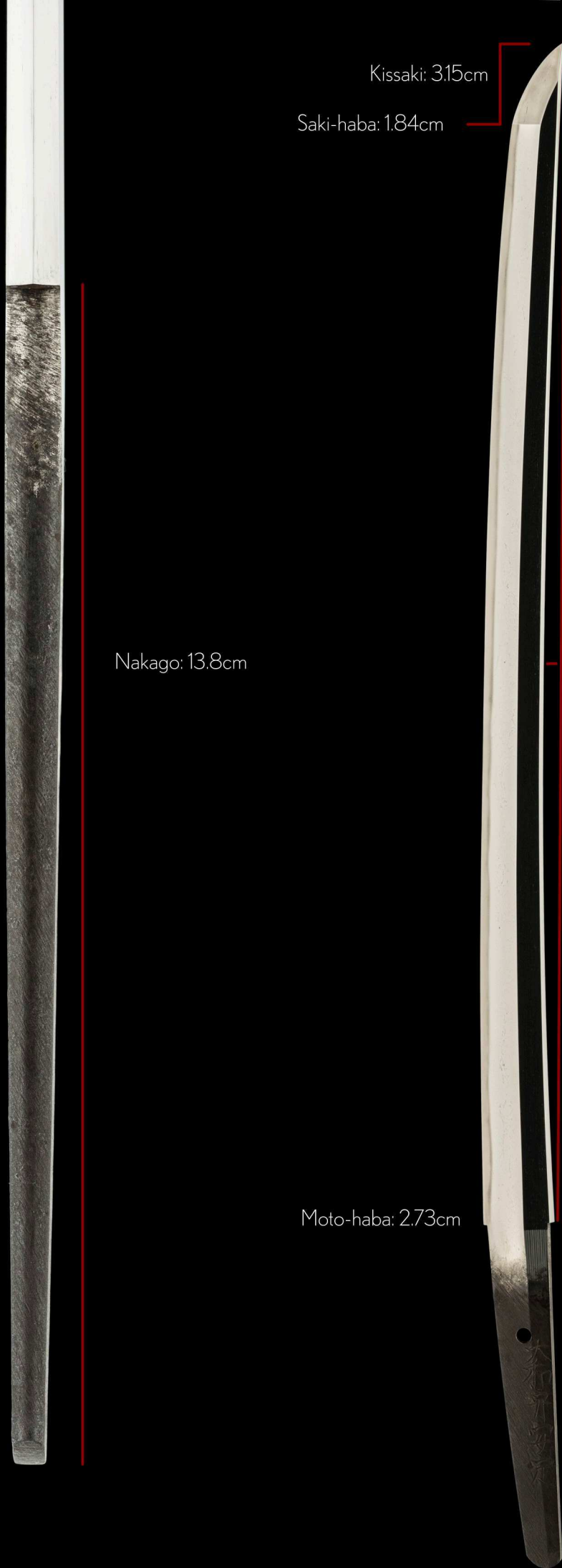
Nakago: 13.8cm

Moto-haba: 2.73cm

Nagasa: 47.9cm

Sori: 0.5cm

Mekugi-ana: 1



*Yamato no Kami Yasusada* is a talented swordsmith that is said to come from *Echizen province* and studied under *Shodai Yasutsugu*.

Another theory is that he travelled to Edo (Tokyo) by way of the *Kishu Ishido School*.

*Fujishiro* ranks Yasusada as *Jo-saku* (a superior swordsmith). He is also rated *Ryo-wazamono* for the highly effective cutting ability of his swords.

He flourished as a craftsman during the *Kanbun era* (1661~1673) and forged a close relationship with grandmaster sword tester *Yamano Ka'emon Nagahisa*.





Location: *Musashi*

Title: *Yamato no Kami* (Lord of Yamato province)

Swordsmith: *Yasusada* (first generation)

*ubu-nakago* (original, unaltered tang)

*o-sujikai-yasurime* (steep diagonal file marks)

大 (Ya)

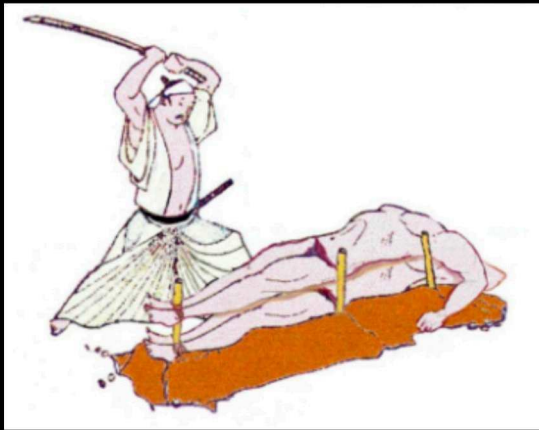
和 (mato, no)

守 (Kami)

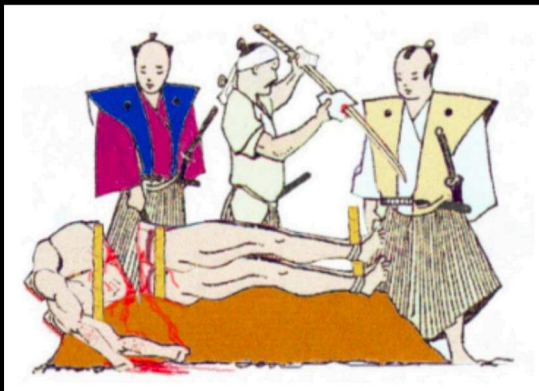
安 (Yasu)

定 (sada)

*Kanbun yonen gogatsu nijûsannichi*  
*Futatsu-dô saidan Yamano Ka'emon Nagahisa*  
 On the 23rd day in May of 1664, sword tester  
*Yamano Ka'emon Nagahisa* severed through  
 two bodies in one stroke.



*before*



*after*

(Futa) 貳  
 (tsu) ツ  
 (dô) 洞  
 (sai) 截  
 (dan) 断  
 (Yama) 山  
 (no) 野  
 (Ka) 加  
 (') 右  
 (e) 衛  
 (mon) 門  
 (Naga) 永  
 (hisa) 久

寛文四年五月廿三日  
 貳洞截断  
 山野加右衛門永久

寛 (Kan)  
 文 (bun)  
 四 (yo)  
 年 (nen)  
 五 (go)  
 月 (gatsu)  
 廿 (nijû)  
 三 (san)  
 日 (nichi)





a finely chiseled signature with  
one clean hole in the *nakago*.



*Yamano Ka'emon Nagahisa* was born in *Keichô three* (1598) and took his work as the leading sword tester very seriously.

He is said to have performed *tameshigiri* virtually every day, numerous times a day.

A typical day would see him sever five to seven bodies. A certain occasion has been noted where he disposed of 27 bodies in a single day.

The earliest extant *tameshi-me* of Nagahisa was performed on August 13, 1639 and the last is from Kanbun seven (1667), the year he died. An active period of around 30 years.

This cutting test was performed in 1664, not long before he died.

*Markus Sesko* writes in his book *Tameshigiri*:

*"Nagahisa was able to judge the cutting ability, smith, and age of the smith simply from looking at a blade when preparing it for the cut, and just by listening to the sound of a blade when another person performs a cutting test."*

特 選  
91997001

№ 141614



右は當協會に於て審査の結果特別保存刀剣と  
鑑定しこれを証する  
平成九年二月十三日

財団法人日本美術刀剣保存協會  


一脇指 銘 大和守安定

金象嵌 寛文四年五月廿三日  
武ノ洞藏断 山野加右衛門永久

鑑定書

長一尺五寸八分

## NBTHK Tokubetsu Hozon Certificate of Designation

A sword designated as *Especially Worthy of Conservation*  
by the Society for the Preservation of the Japan Art Sword

Issued in the 9th year of Heisei (1997), February 13th

One, Wakizashi

Mei (signature)

Yamato no Kami Yasusada

Kinzôgan Kanbun yonen gogatsu nijûsannichi  
Futatsu-dô saidan Yamano Ka'emon Nagahisa

Nagasa (length)

1-shaku 5-sun 8-bu (47.9cm)

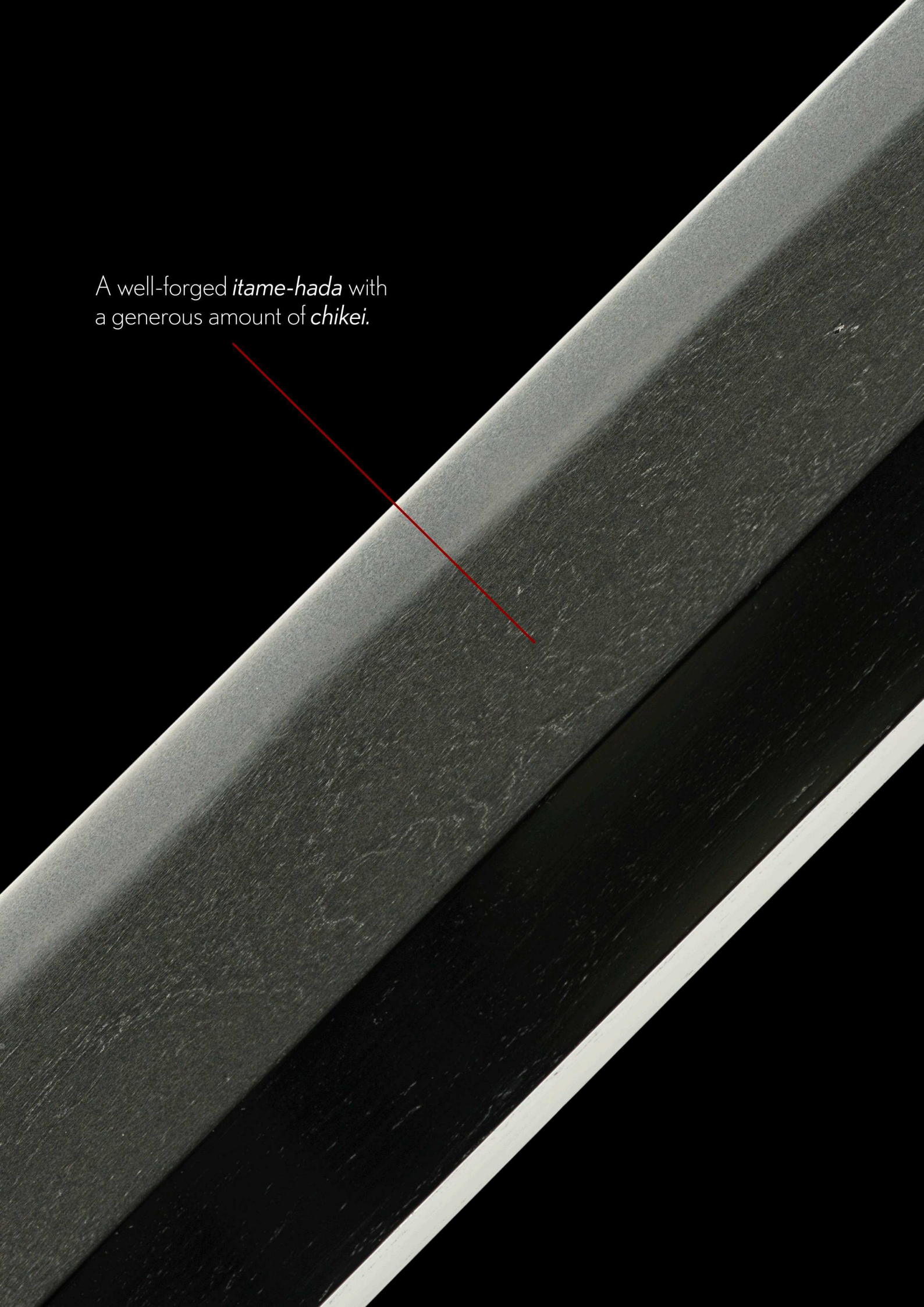
Nihon Bijutsu Token Hozon Kyokai  
(NBTHK)



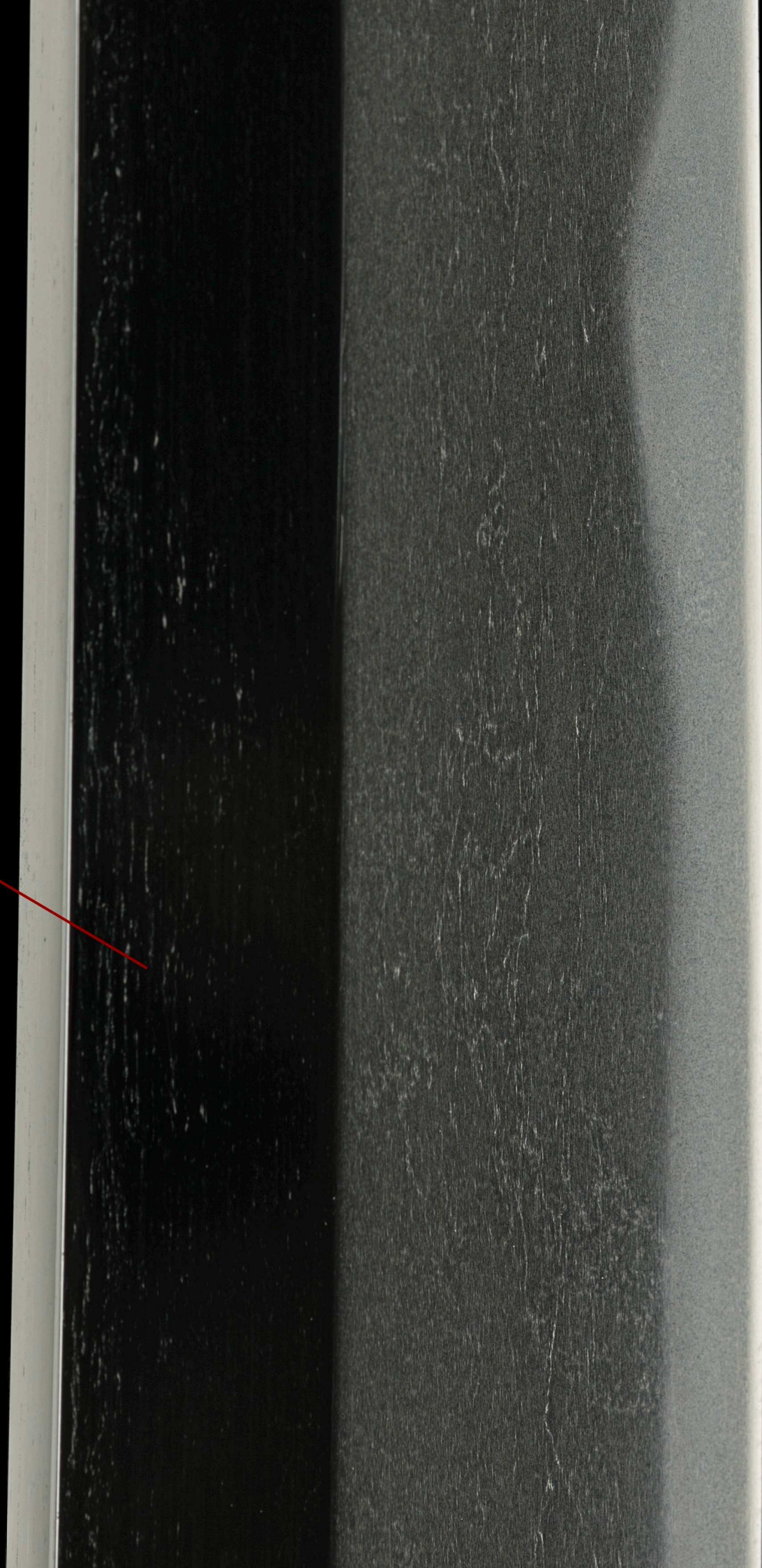
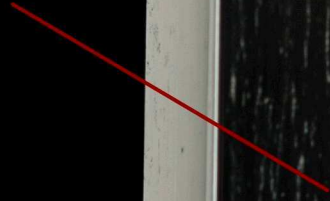
Yasusada's swords  
feature a tapering  
*mihaba* that noticeably  
widens at the base.



A well-forged *itame-hada* with  
a generous amount of *chikei*.



Beautiful straight grain *masame-hada* in the *shinogi-ji*.

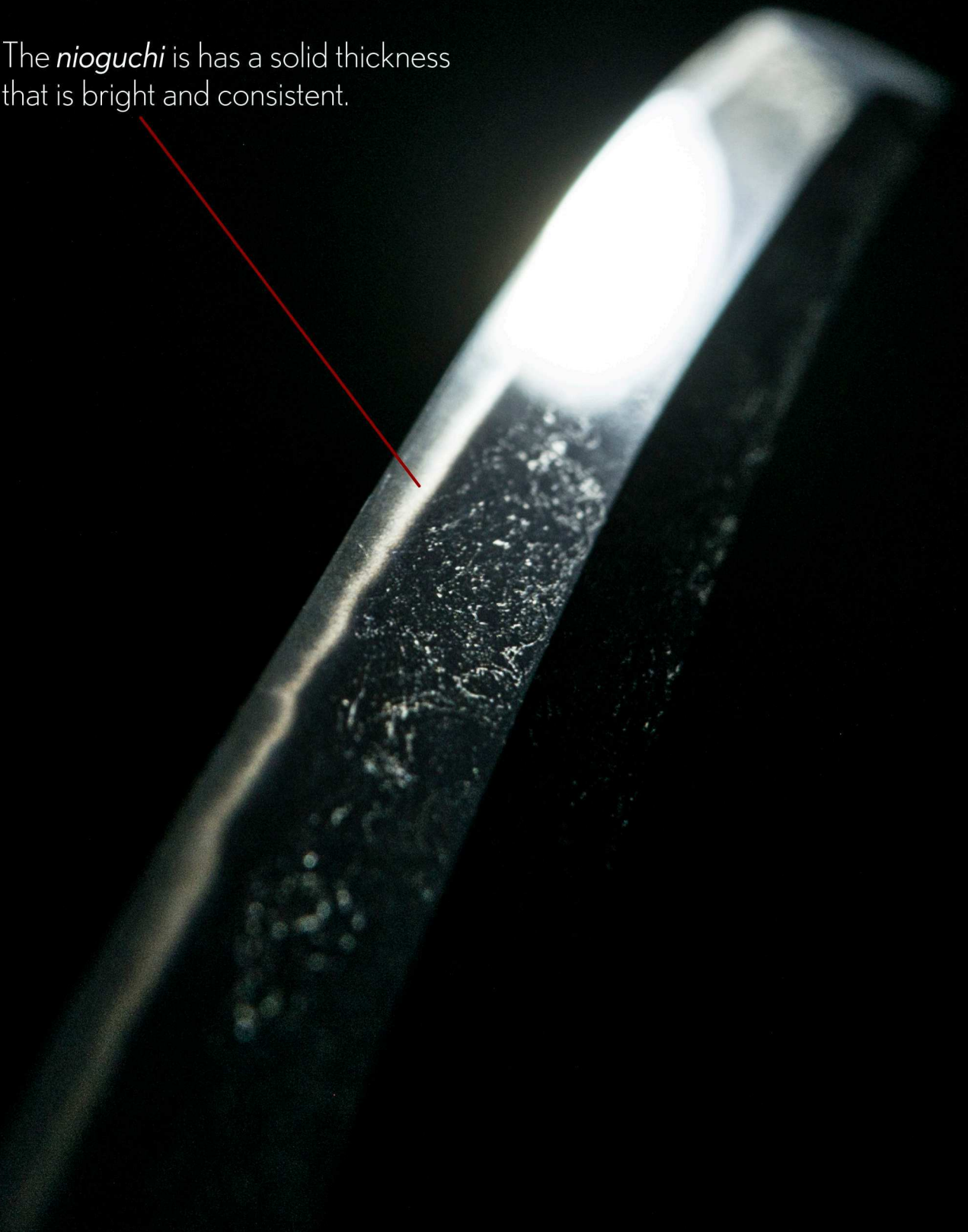




The *boshi* is a straight *sugu* with a *ko-maru kaeri* (rounded return).

A *hamon* based on *suguha* (straight) is rarely found on swords by Yasusada making this a good reference piece.

The *nioguchi* is has a solid thickness that is bright and consistent.



A good look at *ji-nie* where the  
nie crystals in the *ji* (body) shine  
like a diamond under light.

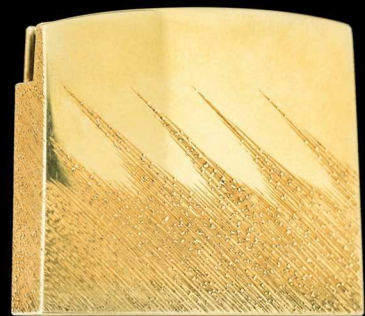




*Ashi* (legs) periodically kick out from the hamon towards the *ha-saki* (cutting edge).



*Shirasaya*  
(protective scabbard)



gold *habaki* with  
diagonal file marks

Looking for a truly uplifting gift for your friends,  
family and co-workers?

Come visit our sister website "We Love Daruma"  
**welovedaruma.com**

*...and discover the power of goal setting*  
(Japanese zen style!)

