



ITEM# UJWA190

A SUKENAO WAKIZASHI

SIGNED, MID-EDO PERIOD (GENROKU ERA: 1688-1704)

Swordsmith: *Omi no Kami Takagi ju SUKENAO*
Location: Settsu province (Osaka)
Length: 54.0cm (ubu) **Curvature:** 1.0cm **Moto-haba:** 3.0cm
Hamon: *Dai gunome midare with sunagashi, kinsuji, the works...*
Jihada: *Well-forged itame, part masame on shinogi*
Certificate #1: **NBTHK Tokubetsu Hozon** (*a sword designated as Especially Worthy of Preservation by the Society for the Preservation of the Japan Art Sword*)
Certificate #2,3,4: **NTHK-NPO Kanteisho** (*a tsuba, fuchi-kashira, and koshirae designated as Important by the Non-Profit Japanese Sword Appraisal Association*)
Fujishiro: *Jojo-saku* (ranked as a highly superior swordsmith)
Included: Koshirae, shirasaya, sword fabric bags, sword stand, DVD, kit, etc.

SOLD

Maestro Sukenao was born in *Omi Takagi*, his common name is *Magodayu*. He entered as an apprentice of *Echizen no Kami Sukehiro*, one the greatest smiths in the early Edo Period.

He later married Sukehiro's younger sister and became his most prolific student.

Sukenao lived in *Osaka Soya-cho*. His works are seen up until about *Genroku Rokunen* (1693) (55 years of age), and perhaps this is the year he died.

His works are an eye-catching symphony of *gunome ashi iri* (surging wave temper line with long legs extending to the blade's edge). This impressively long wakizashi holds all the beautiful qualities that Sukenao and his sensei were famous for.

There will always be something new and exciting to see in this bright *hamon*. The *sunagashi* and *kinsuji* are so pronounced. This is a temper line that uplifts the spirit.

The detailed Mid-Edo period *tsuba* is signed by *Mogarashi Nyudo Souten Sei*. It is in the design of Samurai warriors, gorgeously carved re-enacting the great Genpei War between the Taira and Minamoto clans that culminated in the commencement of the Kamakura period in 1185.

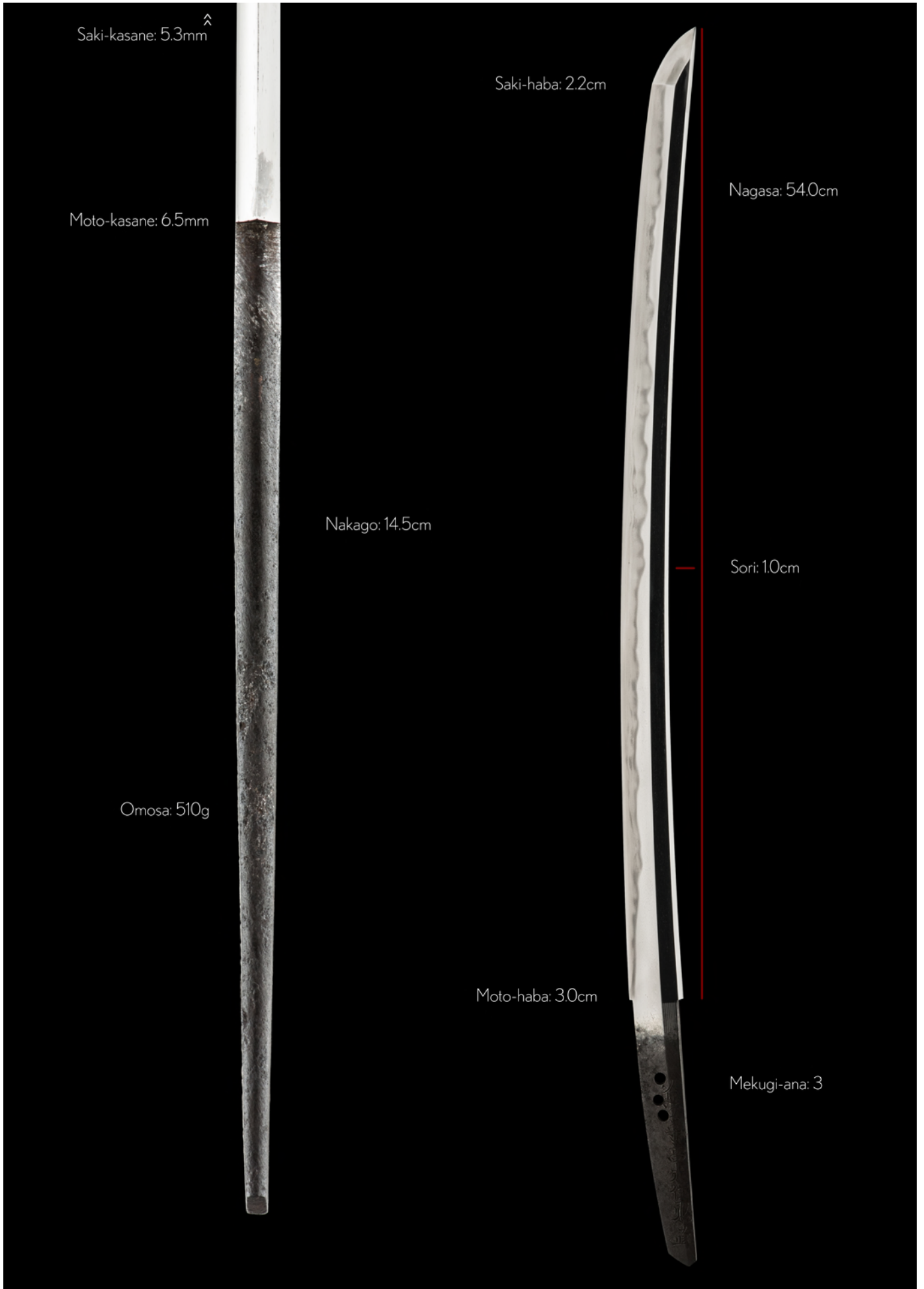
The *Mino Goto School fuchi-kashira* and *menuki* are of protective dragons guarding the life and bringing spiritual protection of the sword's owner. The *koshirae* is dated to the Taisho period.

Four (4) certificates of authenticity accompany this wakizashi including prestigious NBTHK Tokubetsu Hozon. This is a marvelous sword by a gifted artist seemingly taken too young.




*"Success is not final, failure is not fatal:
it is the courage to continue that counts."*

- Winston S. Churchill







Omi no Kami

Lord of Omi province (title)

Takagi ju

From Takagi village (in Omi province)

Sukenao

Swordsmith

○

mi (no)

Kami

Taka

gi

ju

Suke

nao

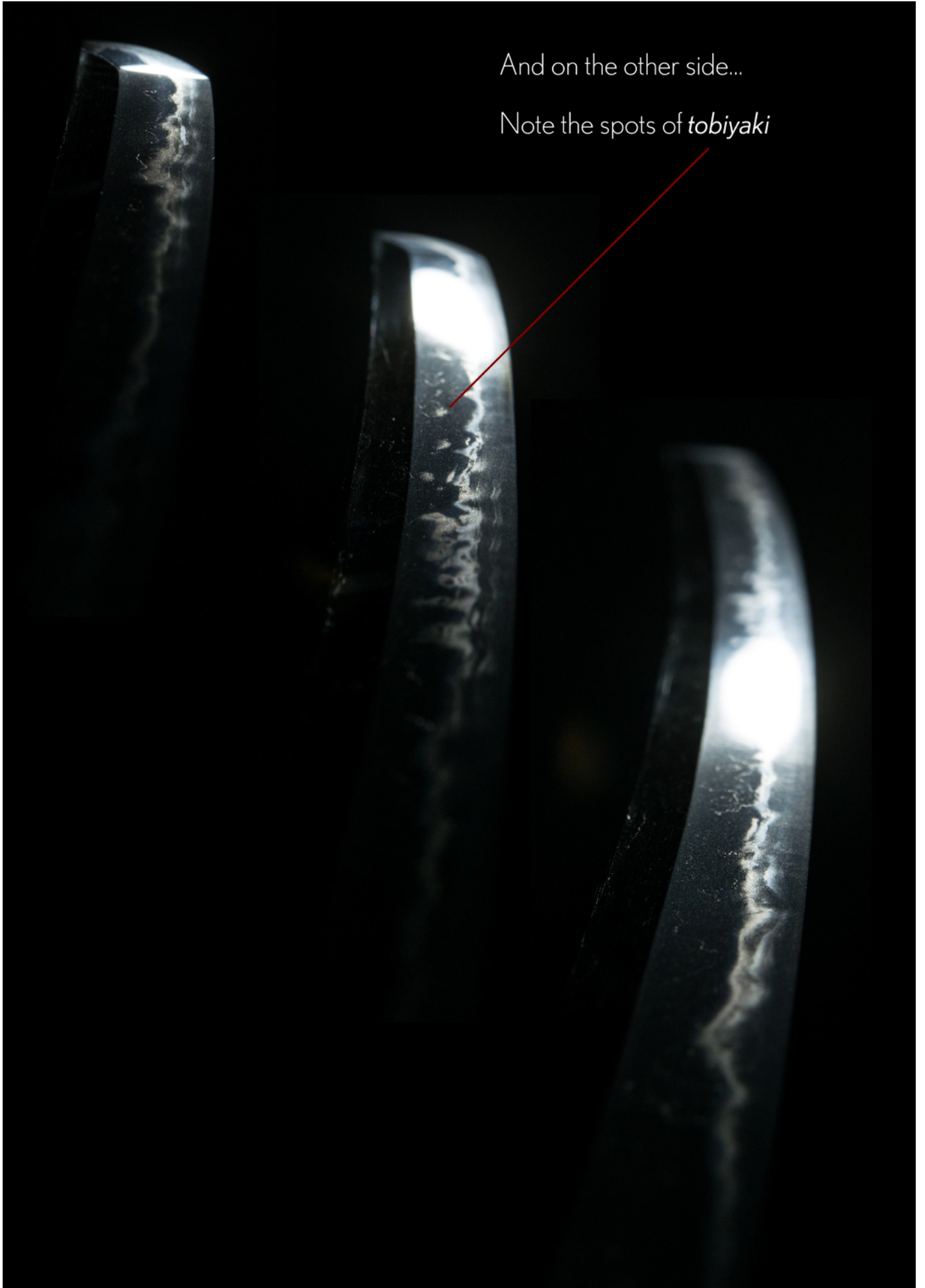
Hamon

A symphony of billowing *o-gunome* (large semi-circular waves), sweeping sands of striating *sunagashi*, long *ashi* (legs), *kinsuji* (black shiny lines) - steel paradise.



And on the other side...

Note the spots of *tobiyaki*





Shirasaya



Habaki
(rock pattern in gold
on copper base)





A signed Goshu, Mogarashi Souten tsuba (guard)
Mid-Edo Period (~1700s), NTHK-NPO Kanteisho Certification





The Genpei War

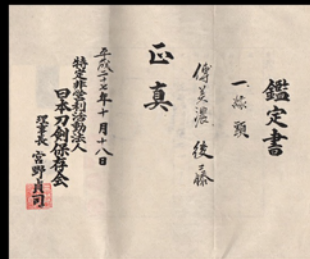
The design on the *tsuba* depicts Japan's pivotal *Genpei war* of 1180-1185 during the late *Heian period*.

It was an immense conflict between the *Taira* and *Minamoto* clans.

In the end the Taira clan fell. Thus began the establishment of the *Kamakura Shogunate* under *Minamoto Yoritomo* in 1192 in Kamakura.



Minamoto no Yoritomo. From a hanging scroll by *Fujiwara no Takanobu* (1179)

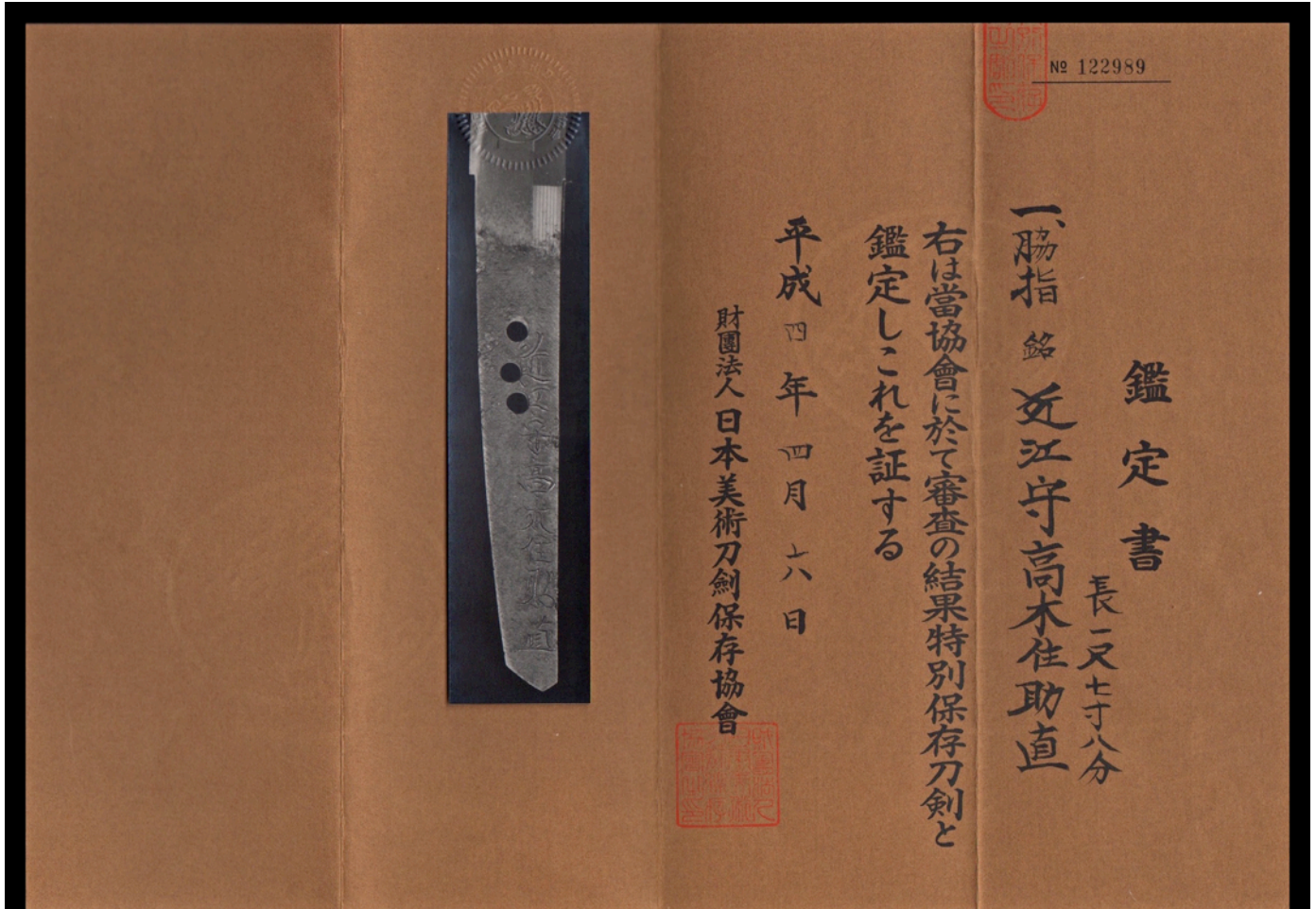


Fuchi-kashira in cloud dragon theme
Mid-Edo Period (1700s)
Den, Mino Goto (NTHK-NPO Certificate)





Unryu
(cloud dragon)



NBTHK Tokubetsu Hozon Certificate of Designation

(a sword designated as *Especially Worthy of Conservation*
by the Society for the Preservation of the Japan Art Sword)

Issued in the 4th year of Heisei (1992), April 6th

One, Katana

Mei (signature)

Omi no Kami Takagi Ju Sukenao

Nagasa (length)

1-shaku 7-sun 6-bu (54.0cm)

Nihon Bijutsu Token Hozon Kyokai
(NBTHK)

ARIGATO!

THANK YOU FOR DOWNLOADING OUR CATALOGUE.
WE LOOK FORWARD TO SERVING YOU.

PLEASE JOIN OUR VIP MAILING LIST TO BE INFORMED OF RECENTLY
ACQUIRED SWORDS.

EMAIL US AT SERVICE@UNIQUEJAPAN.COM



*I believe I can fly...
Congratulations A.S.*

UNIQUEJAPAN.COM



*Man, it doesn't show signs of stoppin',
And I've brought me some corn for poppin',
The lights are turned way down low...*

Let it snow...let it snow...let it snow..!