



ITEM# UJWA173

A HANKEI WAKIZASHI

SIGNED, SHINTÔ EARLY EDO PERIOD (GENNA ERA: 1615~1624)

Swordsmith:	<i>Hankei (shodai, first generation)</i>
Measurements:	Length: 45.2cm (<i>ubu</i>) Sori: 0.6cm Moto-haba: 3.0cm Weight: 490g
Jihada:	<i>Rich ô-hada mixed with mokume with plentiful chikei</i>
Hamon:	<i>Gleaming suguha mixed with notare in nie-deki, with kinsuji, sunagashi and ashi</i>
Certificate #1-2:	NBTHK Tokubetsu Hozon (sword and tsuba Especially Worthy of Preservation)
Certificate #3:	NBTHK Hozon (a fuchi-kashira Worthy of Preservation)
Certificate #4:	NTHK-NPO Yûshûsaku (a sword certified as MasterWork)
Certificate #5-7:	NTHK-NPO Kanteishô (koshirae, menuki & kogai/kozuka certified as Authentic)
Fujishiro rank:	Saijô-saku (ranked as a grandmaster swordsmith)
Authentication:	Sayagaki by Kanzan-sensei (Dr. Satô Kanzan)
Included:	Shirasaya, custom koshirae, fabric bags, stand, kit, printed description

SOLD

Grandmaster swordsmith *Hankei* was born *Noda Zenshirô Kiyotaka* in *Mikawa* province. He began his career as a gunsmith in service to *Tokugawa Ieyasu*. Following the death of *Ieyasu* in 1616, *Hankei* relocated to *Edo* and transitioned to the art of sword making. *Hankei*'s stylistic inspiration was drawn from *Norishige* with a unique signature that evolved throughout his career, with two primary variations: the "*ro-mata*" signature from his prime years (that this wakizashi features) and the later "*ru-mata*" mei. This exceptional wakizashi with from his formative years is a particularly rare and significant collector's item with a glorious custom koshirae with *Mino* school fittings.



Saki-kasane: 5.0mm

Moto-kasane: 6.8mm

Omosa: 490g

Kissaki: 3.77cm

Saki-haba: 2.2cm

Nakago: 13.5cm

Moto-haba: 3.0cm

Nagasa: 45.2cm

Sori: 0.6cm

Mekugi-ana: 2 (one filled)



Grandmaster swordsmith *Hankei* was born *Noda Zenshirô Kiyotaka* in *Mikawa* province. He began his career as a gunsmith in service to the *Tokugawa* family with *shogun Tokugawa Ieyasu* having provided him with charcoal in the amount of 1,000 *hyô* every year.

Following the death of *Ieyasu* in 1616, Hankei relocated to *Edo* (Tokyo) and transitioned to the art of sword making. This career shift established him, alongside first generation *Yasutsugu*, as one of the premier swordsmiths of Edo and the *shintô* period.

While historical accounts suggest *Masamune* as Hankei's stylistic inspiration, careful examination of his surviving works indicates he more closely resembles the style of *Norishige*, Masamune's star student.

Though his exact death date remains unknown, it is believed that Hankei was active until at least the mid-*Kan'ei* era (1635~1640). His signature style evolved throughout his career, with two primary variations: the "*ro-mata*" signature from his prime years (that this wakizashi features) and the "*ru-mata*" signature from his later working life.

Hankei holds the prestigious *saijô-saku* (grandmaster) ranking, a distinction awarded to only a select few swordsmiths of the *shintô* period. This exceptional *ubu nakago* wakizashi with from his formative working years is a particularly rare and significant collector's item with beautiful *Mino* school fittings in an autumn theme.





Location: *Edo*

Family name: *Noda*

Swordsmith: *Hankei* (first generation)

ubu-nakago (original, unaltered tang)

ô-sujikai-yasurime (diagonal file marks)

繁 (Han)

慶 (kei)



signed in *ro-mata* style



ro-mata
(flourishing/golden era)



ru-mata
(his latter years)

特 保
14200201

№ 147020



鑑定書

長一尺四寸九分

一、脇指 銘 繁慶

右は當協會に於て審査の結果特別保存刀剣と
鑑定しこれを証する

平成十四年二月十四日

財団法人日本美術刀剣保存協會



NBTHK Tokubetsu Hozon
Certificate of Designation

A sword designated as *Especially Worthy of Conservation*
by the Society for the Preservation of the Japan Art Sword

Issued in the 14th year of Heisei (2002), February 14th

One, Wakizashi

Mei (signature)
Hankei

Nagasa (length)
1-shaku 4-sun 9-bu (45.2cm)

Nihon Bijutsu Token Hozon Kyokai
(NBTHK)



捺 査 印 員	備 考	寸 法	拵 え	中 心	図 彫 柄 り	銚 子	刃 紋	下 地	鍛	造 り 込 み	銘 文	第 五 七 七 号
	元 和 頃			目釘穴 二個一与埋め 繼表 裏逆大竹助連		直 <small>い</small> れ返り	太めの直ぐ調湾心も苦むる互角足へう			板目錬れ七思味かかろ大肌が文いし 鑄造り	繁 葉 慶	
											庵 棟	

NTHK-NPO Yushusaku Certificate of Authenticity

This wakizashi was designated as *Yushusaku* (Highly Excellent) by the Non-Profit Society for the Preservation of the Japanese Sword

One, Wakizashi

Mei (signature)
Hankei

Nagasa (length)
1-shaku 4-sun 9-bu (45.2cm)

Issued in 26th year of Heisei (2014), July 23rd

Nihon Token Hozon Kai
(NTHK-NPO)

This sword has reached the highest level of honour at the NTHK-NPO.
Five judges have stamped their names to the certificate.

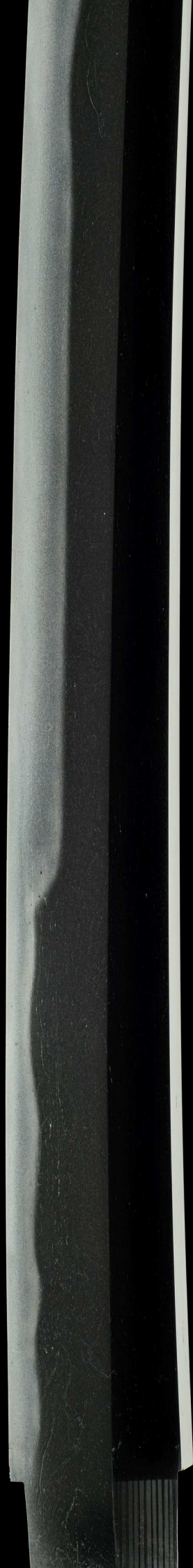
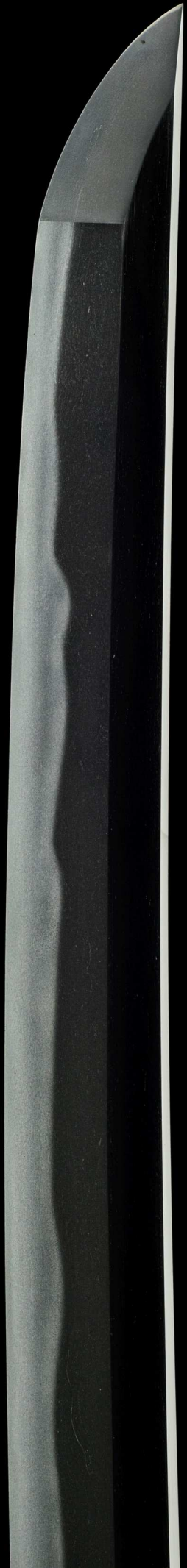


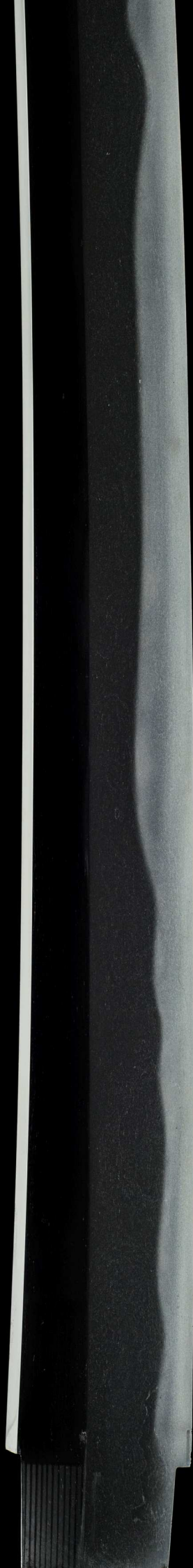
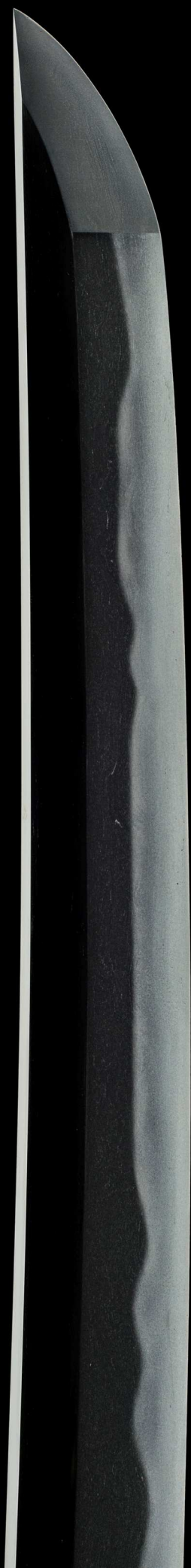
武蔵國鑿磨
Musashi no kuni Hankei
Hankei from Musashi province

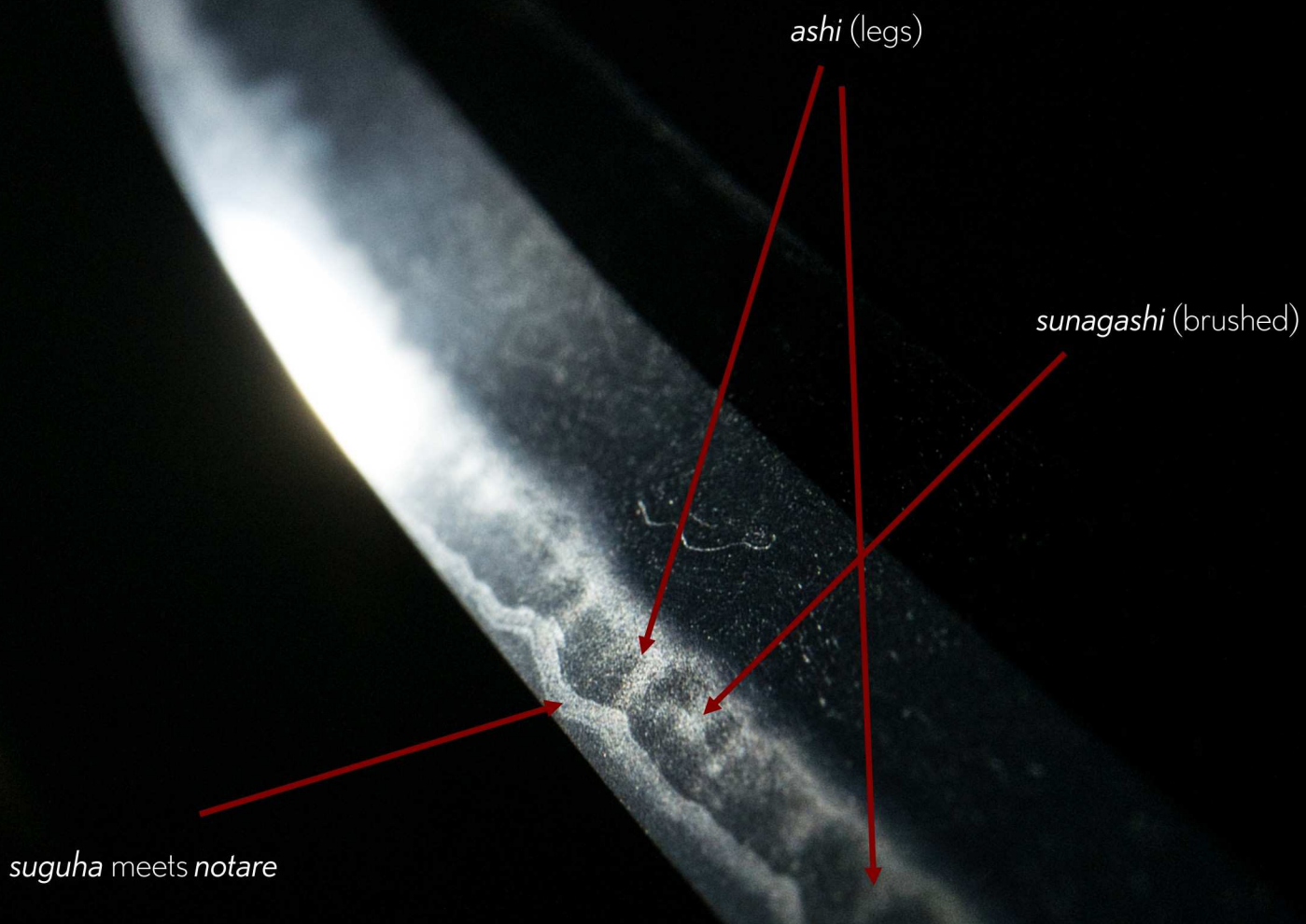
二字晚年作也
Niji bannen saku nari
Signed with two characters, crafted in his later years

刃長壹尺二寸九分有之
Hachô 1-shaku 4-sun 9-bu kore ari
Blade length 45.2 cm

昭和癸丑年盛夏寒山誌 (花押)
Shôwa mizunoto-ushidoshi seika Kanzan shirusu + kaô
Written by Kanzan in the mid-summer in Shôwa era
Year of the Ox (1973) + monogram







suguha meets *notare*

ashi (legs)

sunagashi (brushed)

A thick *suguha*-based *hamon* mixed with wavy *notare* and long *ashi* and plentiful *sunagashi*.

This is the unique artistic genius of *Hankei*.



kinsuji (dark golden line)

sparkling *nie-deki*

kinsuji

ô-hada (big swirls of grain pattern)





Shirasaya
(protective scabbard)

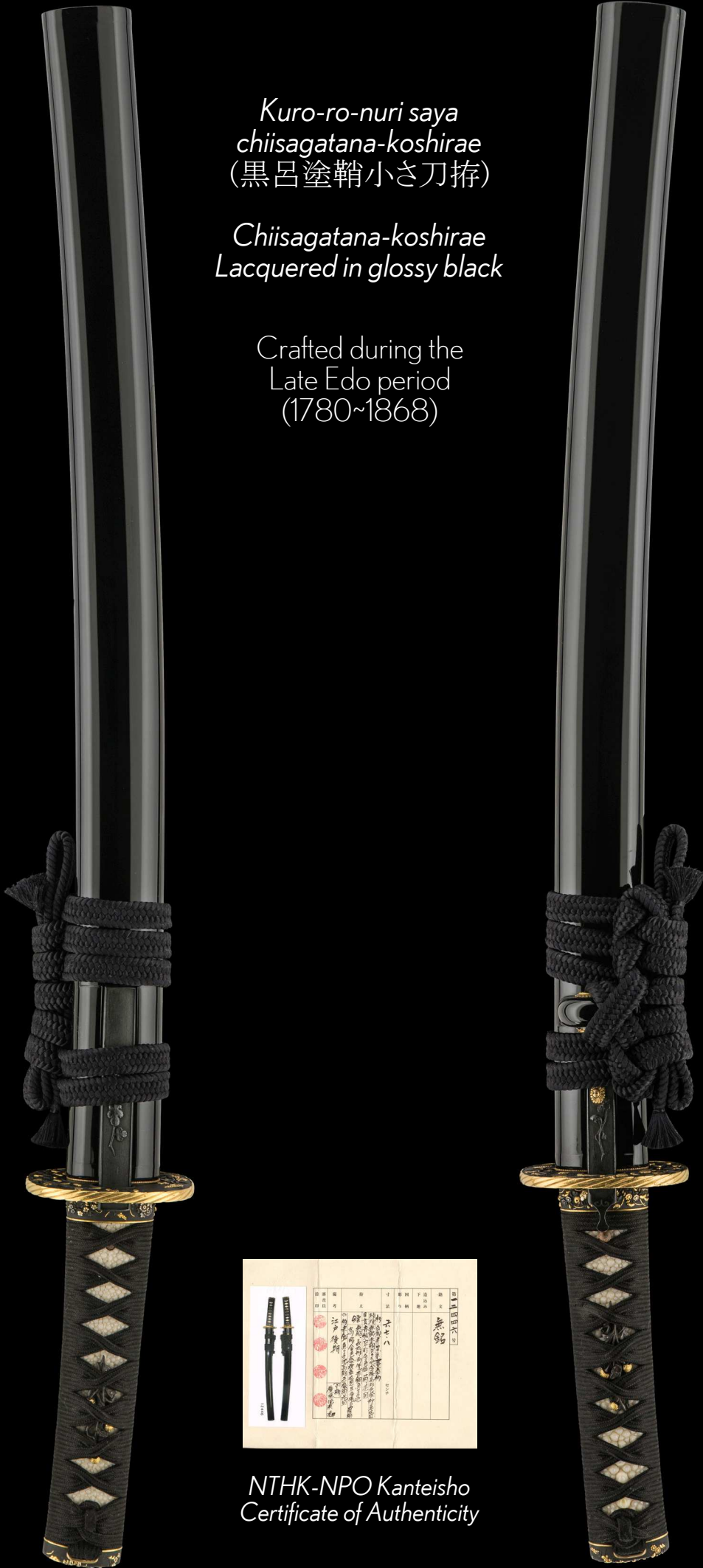


gold *habaki* with
rainfall file marks

*Kuro-ro-nuri saya
chiisagatana-koshirae*
(黒呂塗鞘小さ刀拵)

*Chiisagatana-koshirae
Lacquered in glossy black*

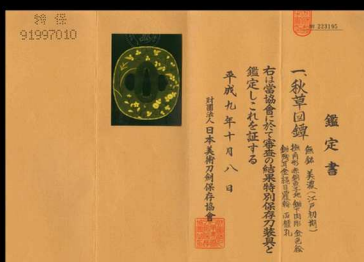
Crafted during the
Late Edo period
(1780~1868)



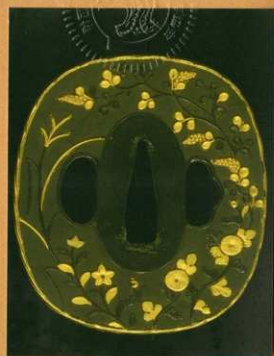
*NTHK-NPO Kanteisho
Certificate of Authenticity*



This beautiful tsuba has been attributed to the esteemed *Mino school* and dated to the early Edo period (1600s), being of similar age to the wakizashi itself. The theme portrayed on the tsuba is of autumn leaves, a specialty of the Mino school and has been certified with NBTHK Tokubetsu Hozon.



特 保
91997010



№ 223195

鑑定書

一、秋草圓鐔

無銘 美濃（江戸初期）
撫角形 赤銅魚子地 鋤下肉彫 金色絵
鋤残耳 金縄目覆輪 両樋孔

右は當協會に於て審査の結果特別保存刀装具と
鑑定しこれを証する

平成九年十月八日

財団法人日本美術刀剣保存協會



NBTHK Tokubetsu Hozon
Certificate of Designation

A tsuba designated as *Especially Worthy of Conservation*
by the Society for the Preservation of the Japan Art Sword

Issued in the 9th year of Heisei (1997), October 8th

One, Tsuba

Depicting autumn leaves

*Mumei (unsigned)
Mino (Edo-shoki)*

*Angular shape with rounded-off corners, shakudô with nanako ground,
relief cut into the ground plate, gold accents,
raised rim with golden rope-style rim trimming, two hitsu-ana*

Nihon Bijutsu Token Hozon Kyokai
(NBTHK)

29201710



No 4012609

鑑定書

一秋草図縁頭 無銘 美濃

赤銅魚子地 高彫 金銀色絵

右は當協會に於て審査の結果保存刀装具と
鑑定しこれを証する

平成二十九年十二月 七日

公益財団法人日本美術刀剣保存協會



NBTHK Hozon
Certificate of Designation

A fuchigashira designated as *Worthy of Conservation*
by the Society for the Preservation of the Japan Art Sword

Issued in the 29th year of Heisei (2017), December 7th

One, Fuchigashira

Depicting autumn leaves

Mumei (unsigned)
Mino school

Shakudô with nanako ground, relief, gold and silver accents

Nihon Bijutsu Token Hozon Kyokai
(NBTHK)



Fuchi-kashira
attributed to
Mino school

Autumn leaves



Menuki (decorative grips on the hilt) carry autumn leaves theme. These *menuki* are attributed to the *Mino School* of the Middle Edo period (1700s).



29201710



No 4012609

鑑定書

一秋草図縁頭 無銘 美濃

赤銅魚子地 高彫 金銀色絵

右は當協會に於て審査の結果保存刀装具と
鑑定しこれを証する

平成二十九年十二月 七日

公益財団法人日本美術刀剣保存協會



NBTHK Hozon
Certificate of Designation

A fuchigashira designated as *Worthy of Conservation*
by the Society for the Preservation of the Japan Art Sword

Issued in the 29th year of Heisei (2017), December 7th

One, Fuchigashira

Depicting autumn leaves

Mumei (unsigned)
Mino school

Shakudô with nanako ground, relief, gold and silver accents

Nihon Bijutsu Token Hozon Kyokai
(NBTHK)

kozuka (utility knife)



The *kozuka* and *kogai* were handy tools of the Edo period samurai, both fitted into specially made slots in the *saya* (scabbard). The pair display a chrysanthemum theme.



This set was crafted by *Gotô Etsujô* from Kaga province. *Gotô Etsujô* was born in Kyoto in 1642, the second son of *Gotô Teijô* (the 9th head of the main *Gotô* family). He was hired by the *Maeda family* and lived in *Kanazawa* every other year to craft fittings for the family. He also trained many students and devoted himself to the development of *Kashû* craftsmen.



kogai (hair pick)

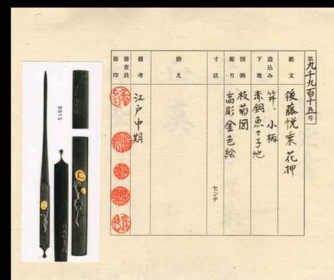
signed kogai/kozuka set



後 (Go)
藤 (tô)
悦 (Etsu)
乘 (jô)
花押 (kaô)

Gotô Etsujô + kaô

Gotô Etsujô + monogram



NTHK-NPO Kanteisho
Certificate of Authenticity



garden party





Congratulations Mike.

Warm regards,
Pablo