



ITEM# UJWA159

## A SEKISHU SADATSUNA WAKIZASHI

UNSIGNED, NAMBOKUCHO PERIOD (SHOHEI ERA: 1346~1370)

- Swordsmith:** *Sekishu Sadatsuna* (attribution)  
**Location:** Iwami province (Shimane prefecture)  
**Measurements:** **Length:** 50.0cm     **Curvature:** 1.2cm  
**Jihada:** *Itame with ji-nie and wonderful waves of chikei*  
**Hamon:** *Gunome midare with sunagashi, kinsuji*  
**Certificate 1:** **NBTHK Hozon** (a sword designated as Worthy of Conservation by the Society for the Preservation of the Japan Art Sword)  
**Certificates 2 - 4:** **NTHK-NPO Kanteisho** (a custom koshirae, tsuba and menuki all designated as Authentic by the Society for the Preservation of the Japanese Sword)

Hailing from the province of Iwami, *Sekishu Sadatsuna* is the son of *Naotsuna*, one of the ten great students of grandmaster *Masamune*. This sword was made during the mid to late Nambokucho period 1346 to 1370, over 600 years ago. A time when Japan was gripped in an intense war and demand for the finest swords was very high.

The polish of the blade is finished to an extraordinary standard. Marvelous *chikei*, black lines of *nie* weave their way through the rich *jihada* (body) like rhythmic sound waves – a dream sight for any Japanese sword connoisseur. The *hamon* is packed in *nie crystals* in *gunome midare*. There is a magical quality to this Soshu tradition crafted sword.

The *nakago* holds a beautiful gold inlay signature of an Edo-period appraiser (read *Tadaoki* or *Tadataka*) that lights up against the chocolate patina. An attractive *bo-hi* (groove) runs along the sides of the sword. A custom koshirae was built for the sword during the summer of 2017 in Japan. A powerful theme of crawling dragons handsomely compliments this wakizashi.

Saki-kasane: 5.3mm <sup>^</sup>

Moto-kasane: 7.0mm

Omosa: 470g

Saki-haba: 2.2cm

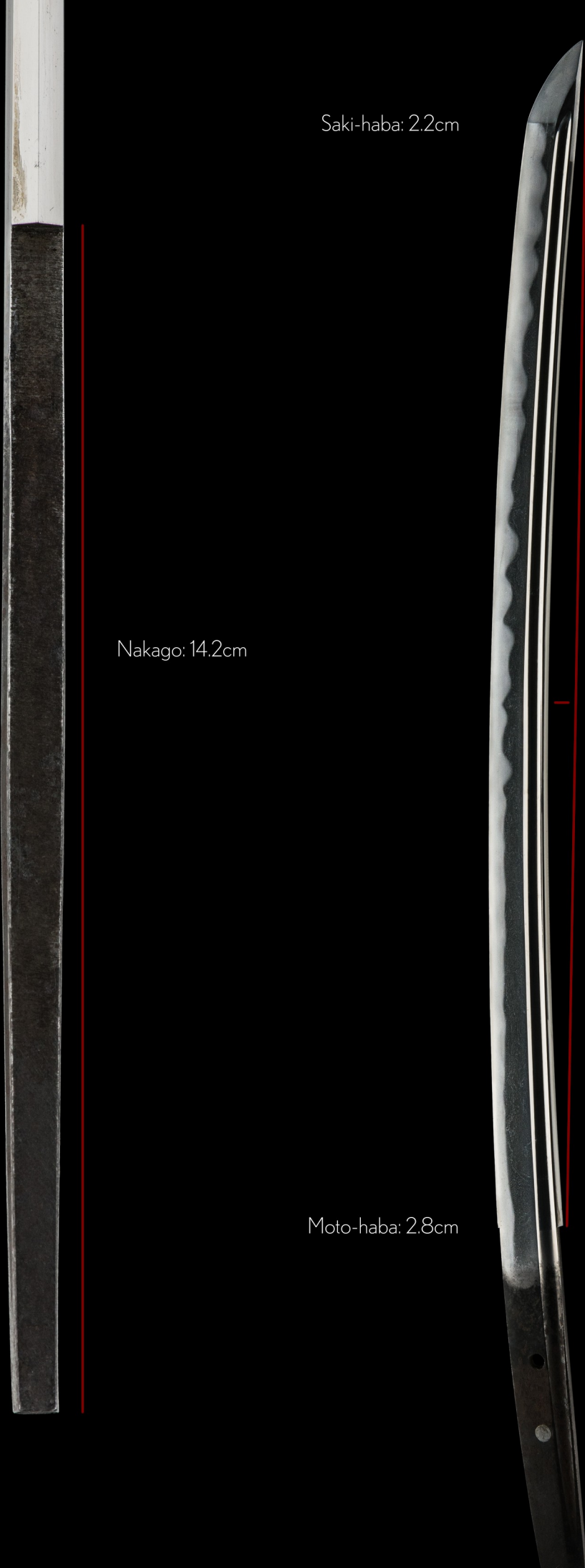
Nakago: 14.2cm

Moto-haba: 2.8cm

Nagasa: 50.0cm

Sori: 1.2cm

Mekugi-ana: 2





五  
五  
五  
五  
五



16200405



№ 367566

鑑定書

長一尺六寸五分

一脇指 無銘伝(石川貞綱)

(金象嵌)忠教(花押)

右は當協會に於て審査の結果保存刀剣と  
鑑定しこれを証する

平成十六年七月二日

財団法人日本美術刀剣保存協會



## NBTHK Hozon Certificate of Designation

A sword designated as *Worthy of Conservation*  
by the Society for the Preservation of the Japan Art Sword

Issued in the 16th year of Heisei (2004), July 2nd

One, Wakizashi

Mei (signature)

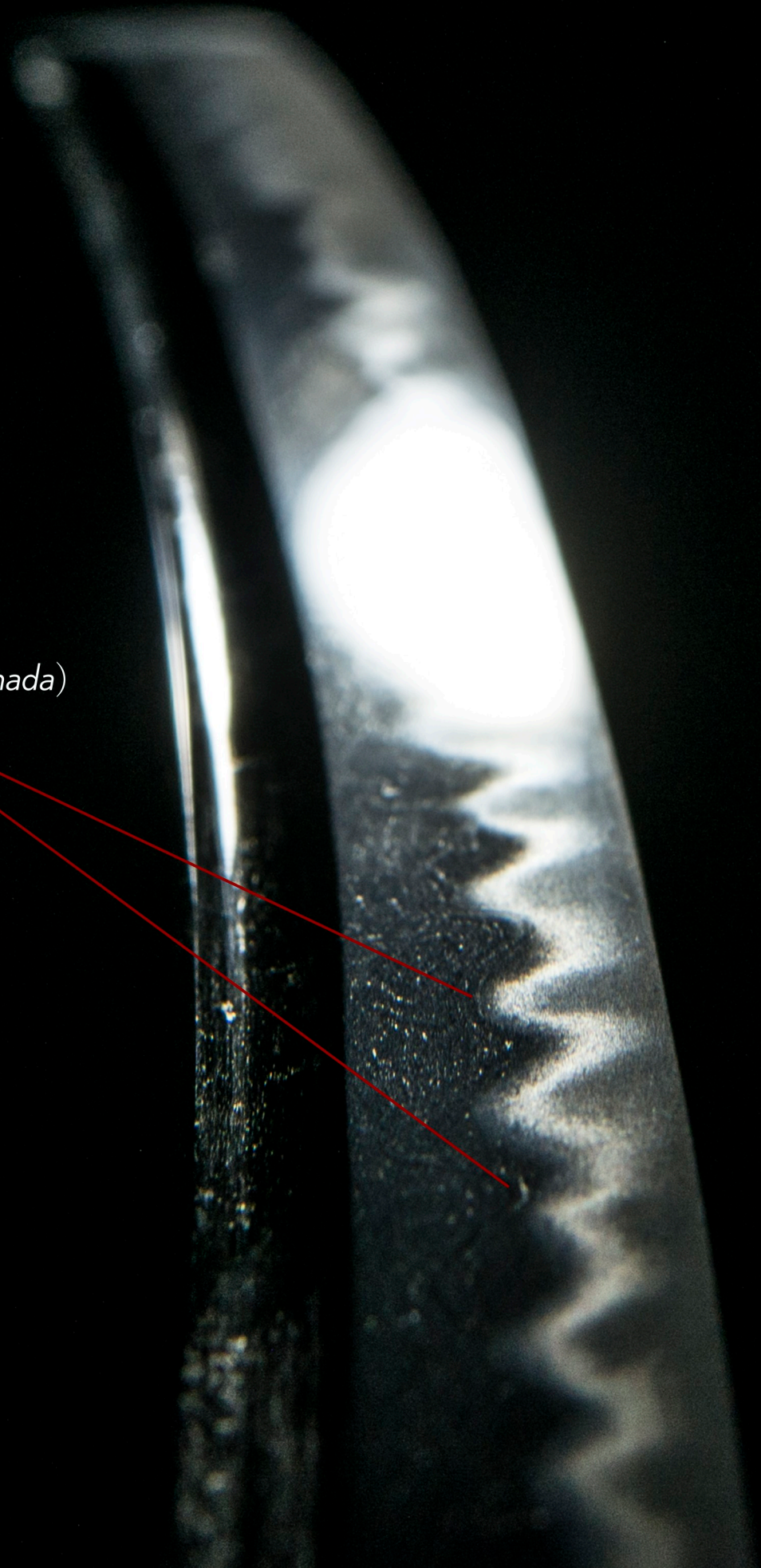
Mumei (*Sekishu Sadatsuna, Kinzogan Tadataka*)

Nagasa (length)

1-shaku 6-sun 5-bu (50.0cm)

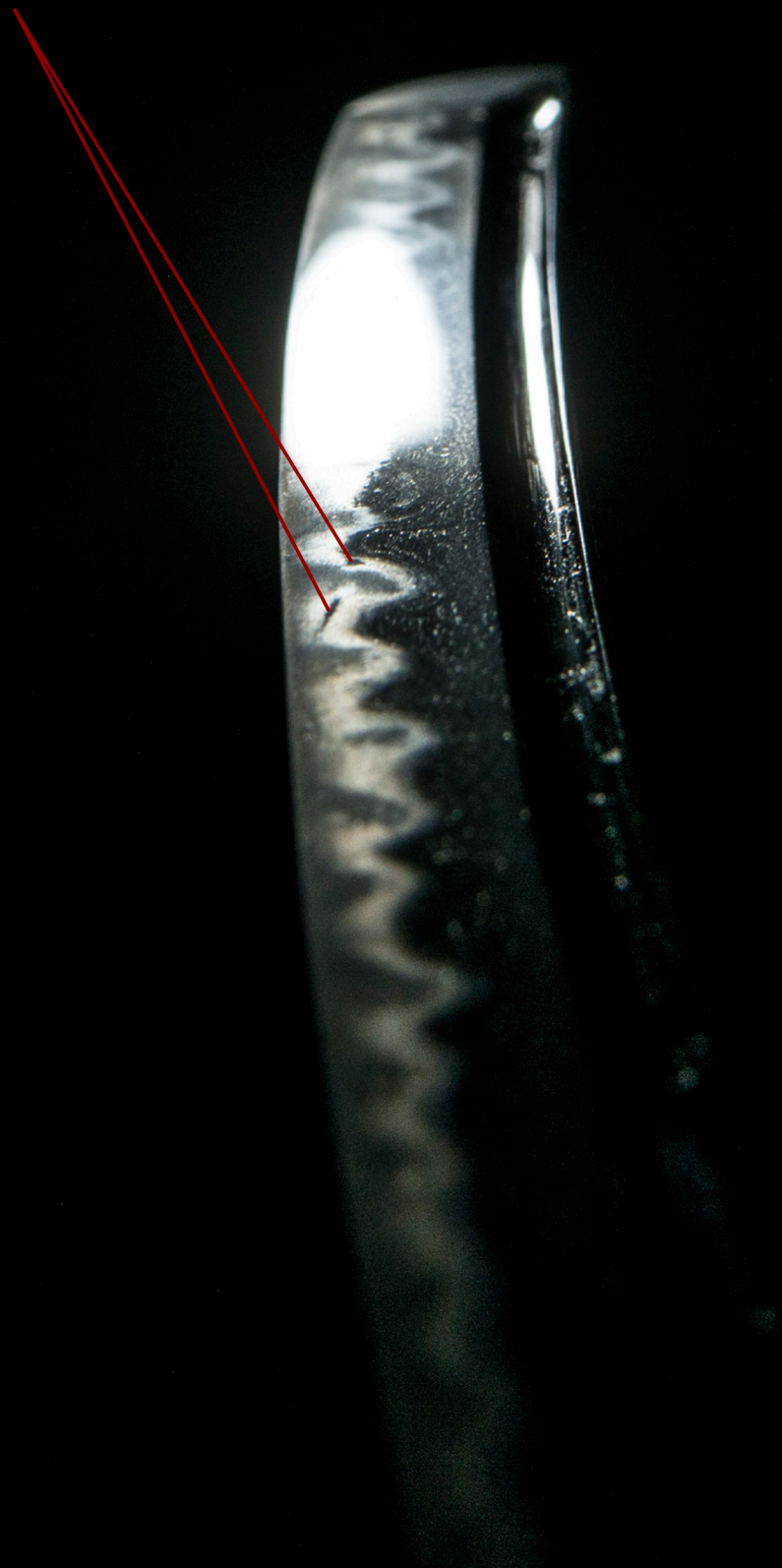
Nihon Bijutsu Token Hozon Kyokai  
(NBTHK)


*chikei*  
(dark lines of *nie* swirl in the *jihada*)



*kinsuji*

golden (black) lines of nie  
crystals that cut through  
the hamon.





A bright, vibrant *gunome midare hamon* (temper line).

Note the long *ashi* (legs) that extend towards the cutting edge.

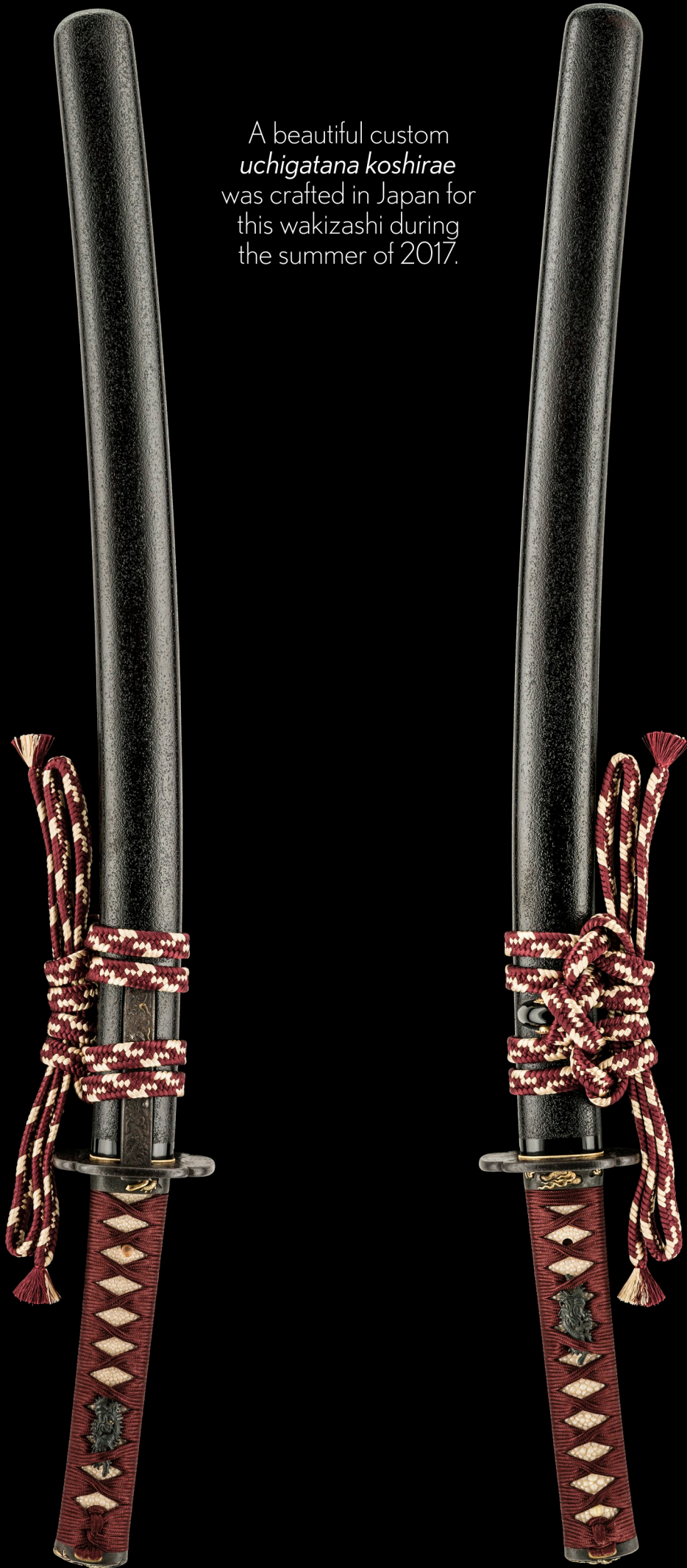


*Shirasaya*  
(protective scabbard)



*Ichiju Kuro-habaki*  
(brass)

A beautiful custom  
*uchigatana koshirae*  
was crafted in Japan for  
this wakizashi during  
the summer of 2017.





## Tsuba

A splendid Mito province Tamagawa school tsuba. Gold inlayed design of a dragon crawling over Mt. Fuji.

The shape is Japanese quince shape. It is made of polished iron with a curled rim.

It was crafted during the late Edo period, mid-1800s.



This tsuba is certified with NTHK-NPO Kanteisho certification



*Menuki* (decorative grips on the hilt) carry crawling dragon theme. These *menuki* are attributed to the *Nomura School* of the Late Edo period.





*kashira*  
(pommel)

a snarling dragon...



*kozuka* (utility knife carried by the samurai)



*Koshirae bag*