



ITEM# UJWA079

A KANENOBU WAKIZASHI

UNSIGNED, LATE MUROMACHI PERIOD (TENBUN ERA: 1532~1555)

Swordsmith: *Den Noshu Kanenobu (attribution)*
Location: *Mino province*
Construction: *Shobu-zukuri (iris leaf shape)*
Measurements: **Length:** 37.3cm (*ubu nakago*) **Curvature:** 0.7cm **Moto-haba:** 3.15cm
Jihada: *Densely forged itame-hada*
Hamon: *Large bright wavy gunome-midare in noi-deki*
Certificates #1-2: **NTHK-NPO Kanteisho** (*sword and koshirae designated as Authentic*)
Included: *Shirasaya, Edo koshirae, bags, stand, kit, DVD, printed description*

SOLD

Attributed to swordsmith *Kanenobu* of Mino province, this very sharp *wakizashi* was crafted for use during the turbulent *Muromachi* period when Japan was engulfed in war over 500 years ago. Shaped like the leaf of an iris, the sword is forged with a tight *itame hada* and a most impressive *o-gunome-midare hamon* with large and small valleys that whip along the full body of the blade.

This *wakizashi* is protected beautifully within a matching set of *koshirae* from the late Edo featuring a scabbard uniquely lacquered to the appearance of tree bark. A polished *shakudo hamidashi tsuba* has gold inlay of a phoenix and *ume* (plum flower). The *menuki* portrays the squared *Meiryu kamon* that denotes a readiness for attack. The pure copper *kozuka* (paper knife) is signed by *Yanagawa Naomitsu* and depicts warlord *Xiang Yu* and first *Han* emperor *Liu Bang*.

Saki-kasane: 3.4mm [^]

Moto-kasane: 3.2mm

Omosa: 335g

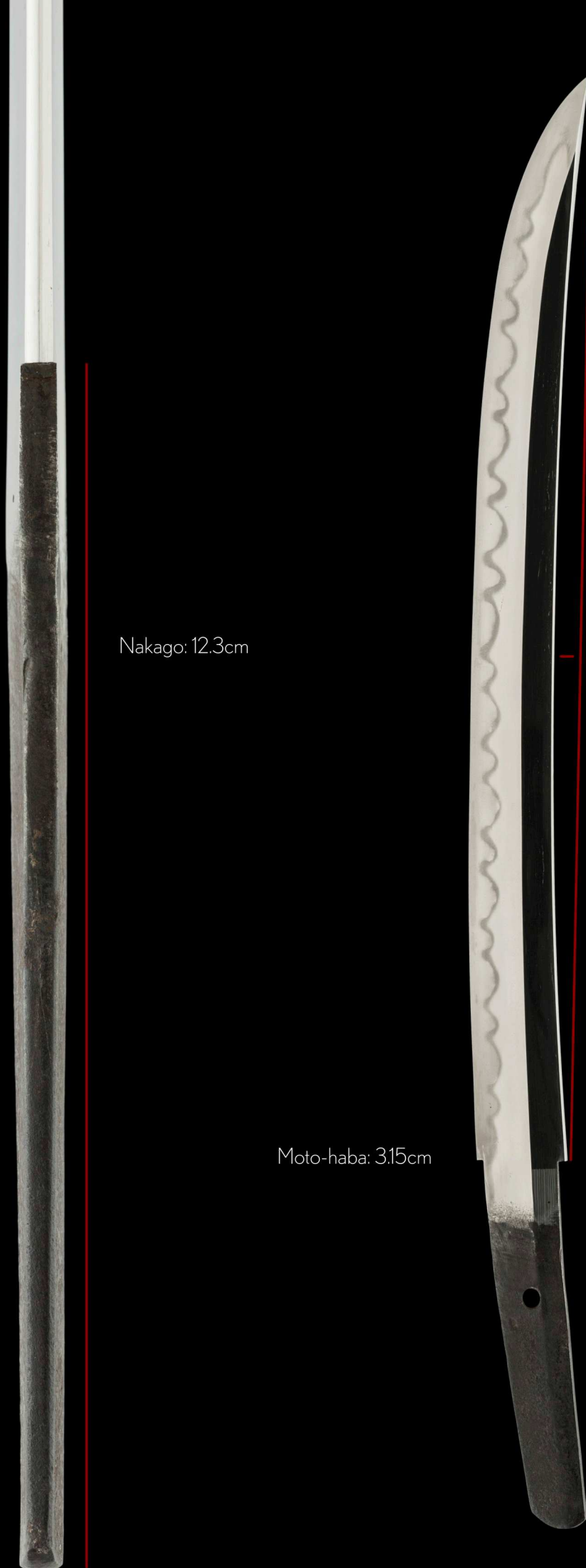
Nakago: 12.3cm

Moto-haba: 3.15cm

Nagasa: 37.3cm

Sori: 0.7cm

Mekugi-ana: 1



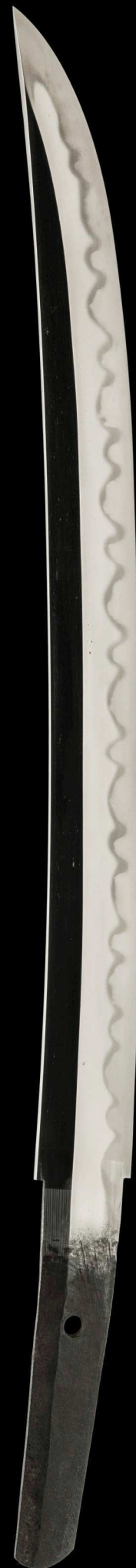
The structure of this wakizashi is called *shobu-zukuri*. Shobu means "iris", as the shape resembles an iris leaf.

The full length of the spine is beveled like a *naginata*. This is a very sharp sword created for battle at the of the warring Muromachi period.

The samurai revered the iris as the word *shobu* has the pronunciation as 'martial' or 'samurai spirit'. The iris is depicted in many works of art.



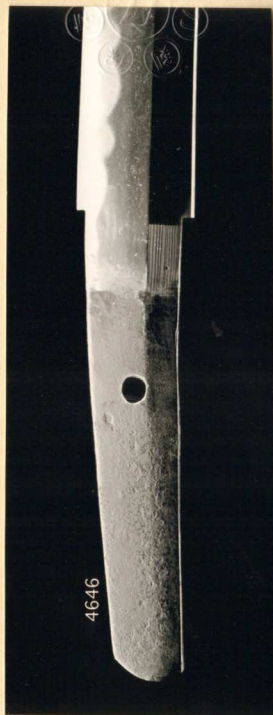
"Iris" by Hokusai (1760-1849)





The *nakago* (tang) has a good dark brown patina from when it was produced, circa 1532-1555.

This sword is unsigned and in original shape, *ubu-nakago*.



捺 審 査 印	備 考	中 心	彫 刻	鈍 子	刃 紋	鍛	銘 文	第 四 六 四 六 号
	天文頃	目釘穴 一個			焼高少の丈互有乱水丈不上線返寸 直下不返寸		板自註 生不無銘	

NTHK-NPO Kanteisho Certificate of Authenticity

This katana was designated as *Authentic*
by the Non-Profit Society for the Preservation of the Japanese Sword

One, Wakizashi

Den Noshu Kanenobu

Nagasa (length)

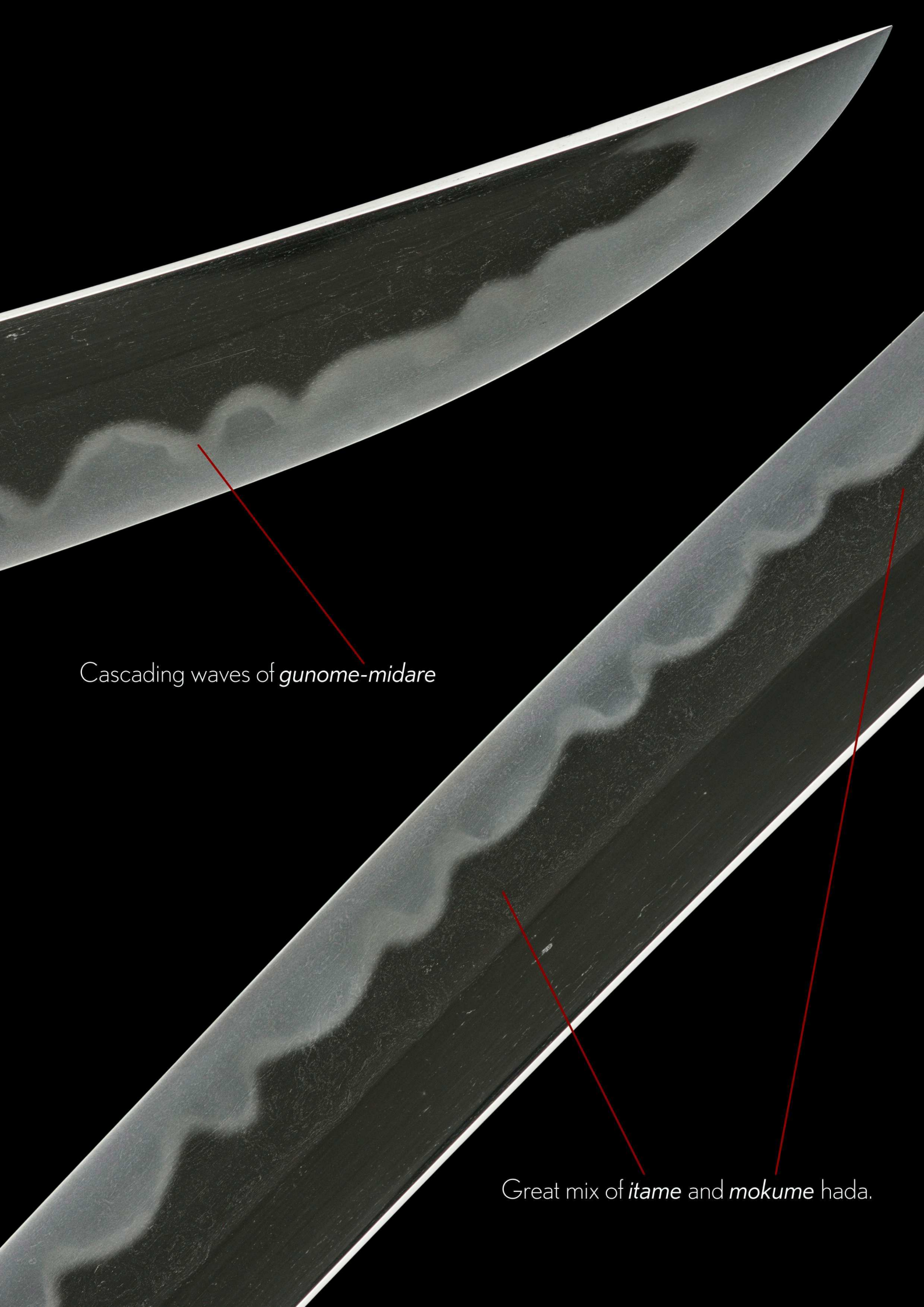
1-shaku 2-sun amari kore ari (37.3cm)

Crafted during *Tenbun era* (1532-1555)

Shinsa judging panel:
five hanko seals of authenticity

Issued in 24th year of Heisei (2012), October 14th

Nihon Token Hozon Kai
(NTHK-NPO)



Cascading waves of *gunome-midare*

Great mix of *itame* and *mokume* hada.



This eye-catching *hamon* pattern is called *o-gunome-midare*.

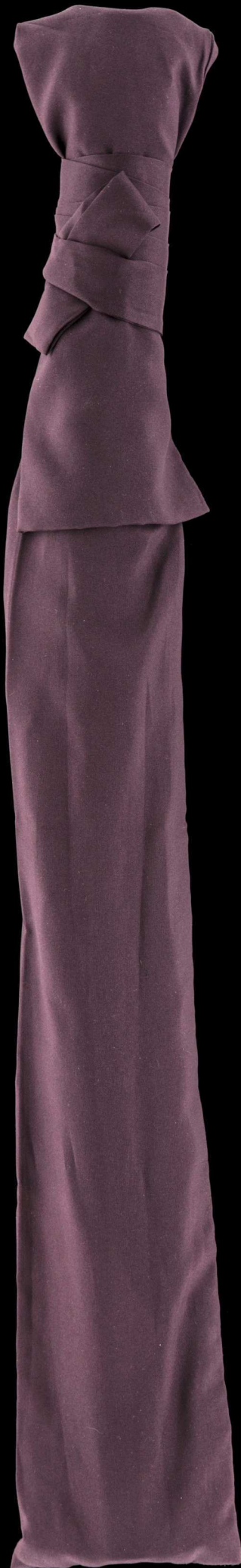
Large rounded waves fill the blade.

This sword is tempered in *nioi-deki* where the crystals are bright and uniform in appearance.

good *chikei*







Shirasaya
(protective scabbard)



a silver *shonai habaki*
with angled rain pattern

*Cha kawari-nuri saya shakudo-
mumon kaigu chiisagatana-koshirae*
(茶変り塗鞘赤銅無紋皆具小き刀拵え)

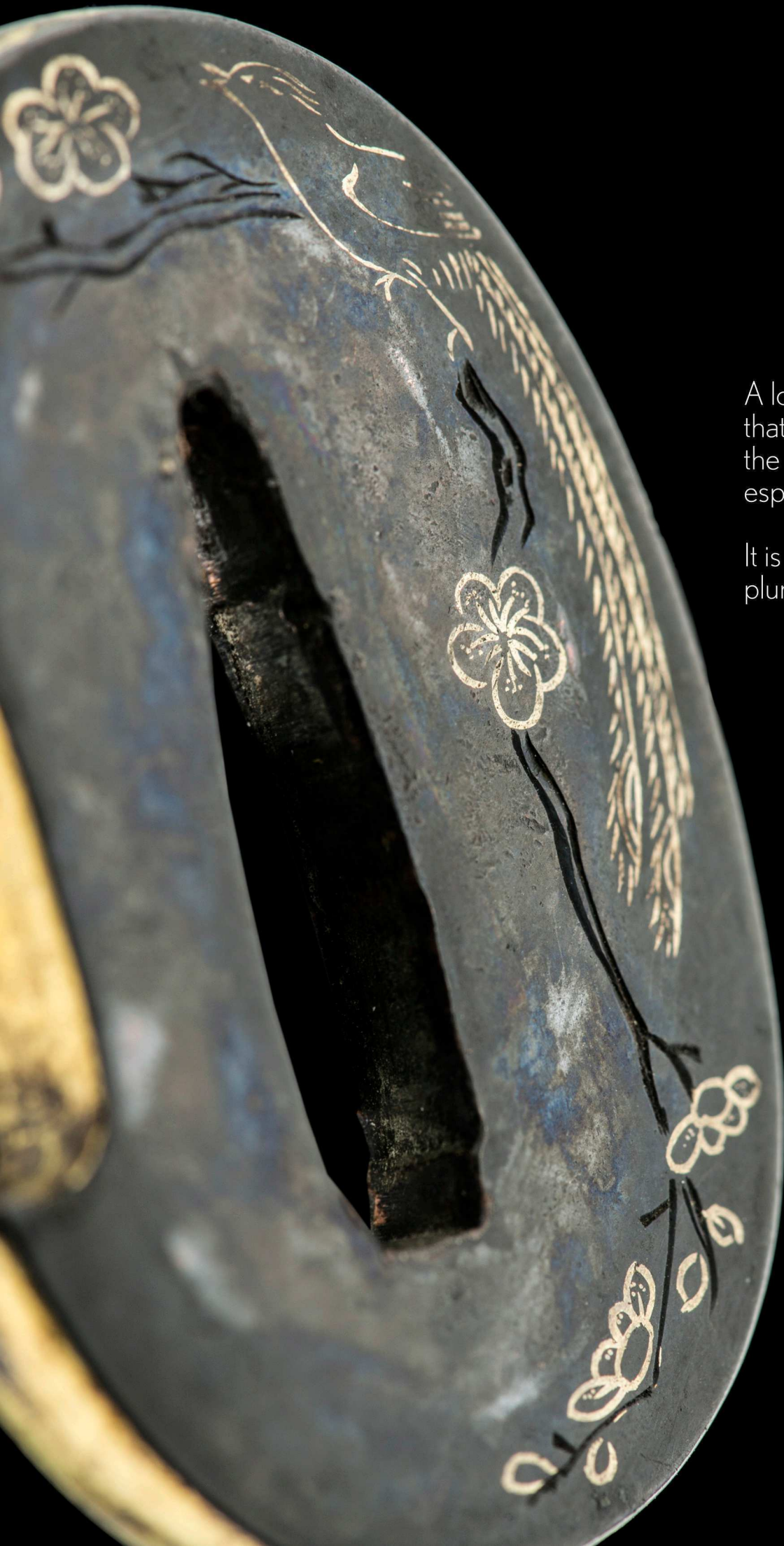
*Small katana koshirae with unique
brown-lacquer saya and
undecorated shakudo fittings*



*NTHK-NPO Kanteisho Certificate
dates the koshirae to the late Edo period
circa 1780~1867*



A unique lacquering technique with a tree bark appearance protects and embraces the sword.



A lovely *hamidashi tsuba* that is just a little bigger than the *fuchi* (collar), designed especially for a short sword.

It is made of *shakudo* with a plum and phoenix motif.





The *menuki* are in the form of the *Hakkoryu Meyui kamon* (crest). The type of mon was used by a retainer of the Minamoto clan and is commonly known as Meyui.

The geometric design of eight squares related directly to the number eight of Hakkoryu and the four eyes denotes *preparedness for attack from all directions*.

Yotsume (four eyes) is also said to guard against evil.





The *kozuka* is signed
Yanagawa Naomitsu.



A brilliant pure copper *kozuka*
with a motif of warlord *Xiang Yu*
and *Liu Bang*, the founding
emperor of the *Han dynasty*.

History in your hands.





Flying into Japan?

If you are travelling to Tokyo and would like to acquire an authentic Japanese sword, be sure to book a **private meeting** with us in advance.

Many swords every year are sold this way to happy clients around the world. Contact service@uniquejapan.com where we'll discuss the type of sword, age and other special qualities you are seeking along with budget parameters. Meetings are held at our studio near JR Ebisu station.