



ITEM# UJTA062

A NOBUKATSU TANTÔ

SIGNED, SHINSHINTÔ PERIOD (BUNKYÛ ERA: 1861~1864)

Swordsmith:	<i>Enju Nobukatsu (shodai, 1st gen.)</i>
Measurements:	Length: 20.9cm (<i>ubu</i>) Moto-haba: 1.96cm Weight: 130g
Jihada:	<i>Ayasugi-hada with ji-nie and chikei</i>
Hamon:	<i>Bright suguha with niyu-ba, kinsuji and long ko-maru kaeri bôshi</i>
Certificate #1-2:	NBTHK Hozon (a sword Worthy of Preservation)
Fujishiro rank:	Chûjô-saku (ranked as an above average swordsmith)
Authentication:	Sayagaki by Nozomi-san (shodô artist)
Included:	Shirasaya, Edo-koshirae, fabric bags, stand, kit, printed description

SOLD

This delightful tantô by *Enju Nobukatsu* shares qualities of the classic *Enju* school that dates back to the *Kamakura* period in the *Kikuchi* area of *Higo* province in *Kyûshû*. It features a wavy *ayasugi hada* and a bright *suguha hamon* that splits into *niyu-ba* in a very *Yamato-den* manner. Several river-like veins of *kinsuji* flow through the hamon most impressively as well. It's wonderful *koshirae* is certified to the late Edo period with *menuki* depicting *Hotei*, the Japanese god of contentment and happiness, guardian of children. He has such a cheerful face and a big belly - widely recognised as the *Laughing Buddha*. For a small blade, this sword packs a punch and definitely carries positive energy. *Nobukatsu* is ranked *chûjo-saku*, an above average smith, and there is a good chance this sword can be upgraded to NBTHK Tokubetsu Hozon. UJ will assist.



Moto-kasane: 6.5mm

Omosa: 130g

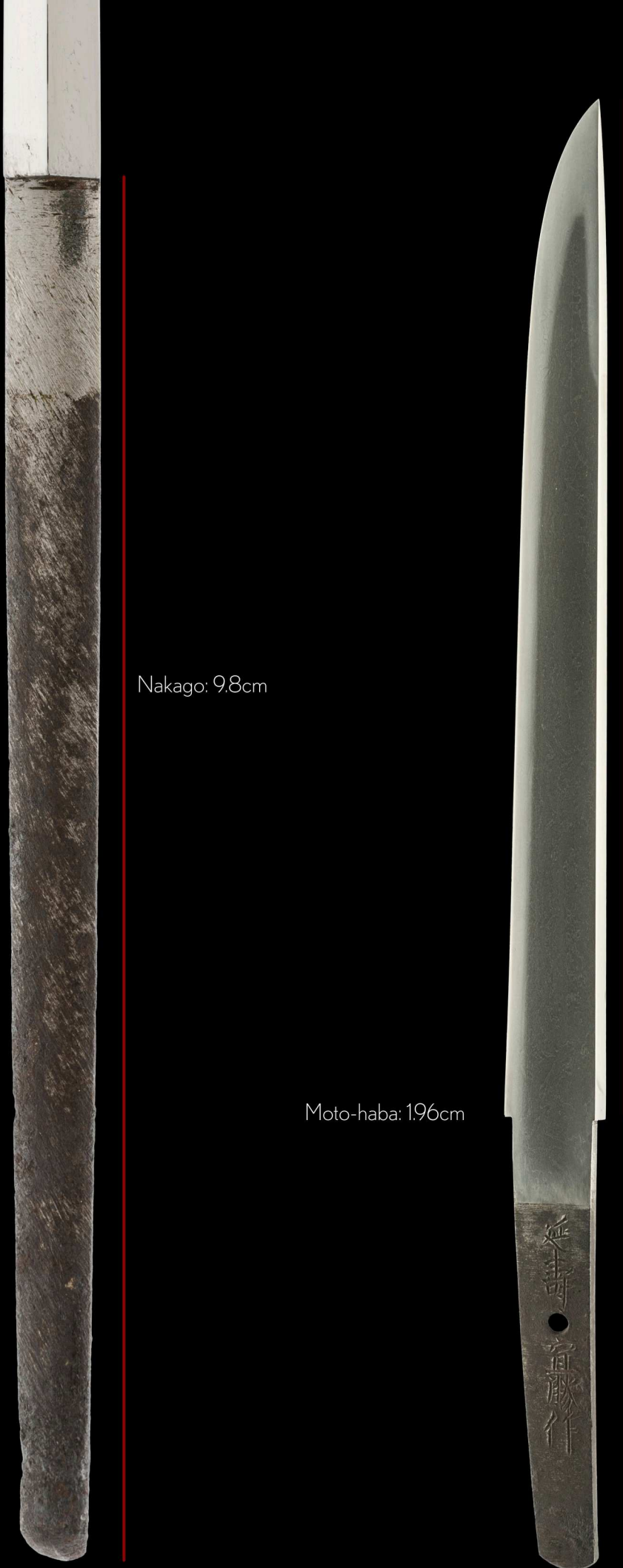
Nakago: 9.8cm

Moto-haba: 1.96cm

Nagasa: 20.9cm

Sori: 0.0cm

Mekugi-ana: 1



The *Enju* school from the *Kikuchi* area of *Higo* province in *Kyûshû* rose to prominence from the late *Kamakura* through the *Nanbokuchô* period, founded by *Rai Kunimura* (来国村), reportedly a grandson of the esteemed *Yamashiro* province smith *Rai Kuniyuki* (来国行). Under its banner emerged several master craftsmen, including *Kuniyoshi* (国吉), *Kunitoki* (国時), and *Kuniyasu* (国泰).

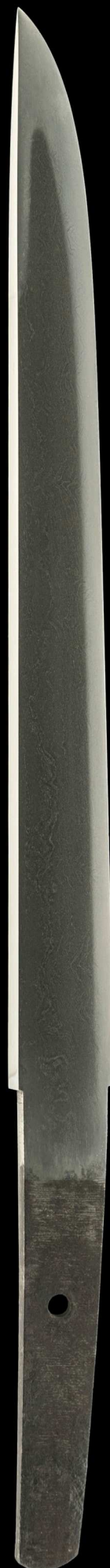
Centuries later, *Nobukatsu*, born Takenaga Kizaemon (武永喜三右衛門), carried forward the *Enju* legacy. His journey began under *Mimasaka's Tada Masatoshi* (多田正利), before his domain commissioned him to study in Edo under *Hosokawa Masayoshi* (細川正義) of *Tsuyama*. While crafting swords from 1844 to 1867, he gained particular recognition for his masterful *yari* (spears). His life's work concluded in 1871, during the fourth year of *Meiji*, when he passed at age 75.

This delightful *tantô* shares features of the classic *Enju* school with a wavy *ayasugi hada* and a bright *suguha hamon* that splits into *niju-ba* in a very *Yamato-den* manner. Several river-like veins of *kinsuji* flow through the hamon most impressively as well.

It's wonderful *koshirae* is certified to the late Edo period (possibly original to the sword) and sports over-sized *menuki* depicting *Hotei*, the Japanese god of contentment and happiness, guardian of children. He has such a cheerful face and a big belly - which is why he is widely recognised as the *Laughing Buddha*. *Hotei* carries a large cloth bag over his back, one that never empties, for it is said he uses it to feed the poor and needy.

All told, for a small blade, this sword packs a punch and definitely carries a message of good fortune and positive energy.

Nobukatsu is ranked *chûjo-saku*, an above average smith, and there is a good chance this sword can be upgraded to **NBTHK Tokubetsu Hozon**, but there is no guarantee. Unique Japan can assist the next owner for its submission in the next **NBTHK shinsa** if he or she so chooses.





Location: *Higo province*

Family name: *Enju*

Swordsmith: *Nobukatsu* (first generation)

ubu-nakago (original, unaltered tang)

kiri-yasurime (horizontal file marks)

延 (En)

壽 (ju)

宣 (Nobu)

勝 (Katsu)

作 (saku)



kurijiri (chestnut shaped) *nakago-jiri*
with the cutting edge side slanting
more steeply.

(*ura*, reverse)

ha agari kurijiri nakagojiri

保 存
12200003

№ 356427



鑑 定 書

長七寸弱

一、短刀 銘 延壽宣勝作

右は當協會に於て審査の結果保存刀劍と
鑑定しこれを証する

平成十二年五月二日

財團法人日本美術刀劍保存協會



NBTHK Hozon
Certificate of Designation

A sword designated as *Worthy of Conservation*
by the Society for the Preservation of the Japan Art Sword

Issued in the 12th year of Heisei (2000), May 2nd

One, Tantô

Mei (signature)
Enju Nobukatsu saku

Nagasa (length)
7-sun jaku (20.9cm)

Nihon Bijutsu Token Hozon Kyokai
(NBTHK)



延寿宣勝
Enju Nobukatsu
Enju Nobukatsu

時代文久頃
Jidai Bunkyo-goro
Circa *Bunkyo* era (1861~1864)

刃長七寸弱有之
Hachô 7-sun jaku kore ari
Blade length 20.9 cm

令和六甲辰年坤月吉日誌之
Reiwa roku kinoe-tatsudoshi Kongetsu kichijitsu kore o shirusu
Written on a lucky day in the tenth month in the sixth year of
Reiwa era during the Year of the Dragon (October 2024)

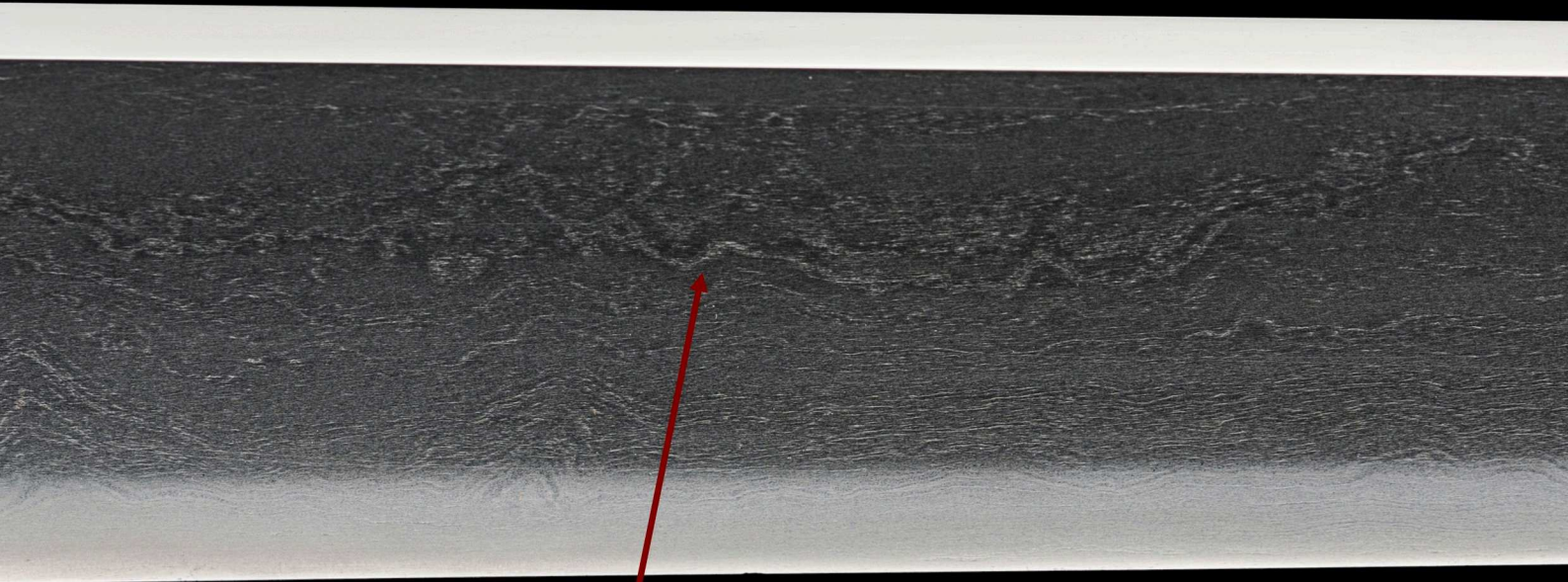




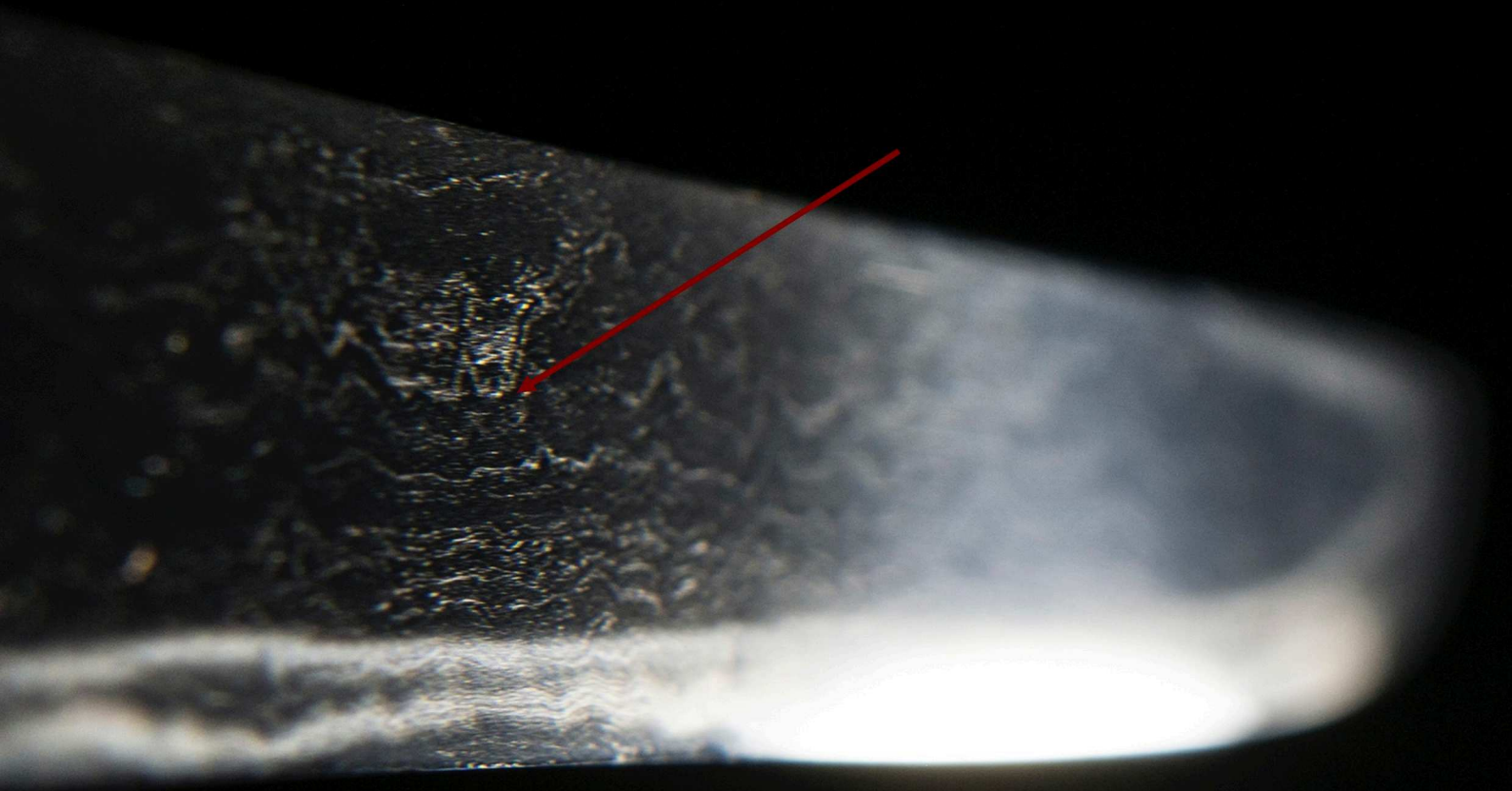


Surface scratch will be polished away before shipment from Tokyo.

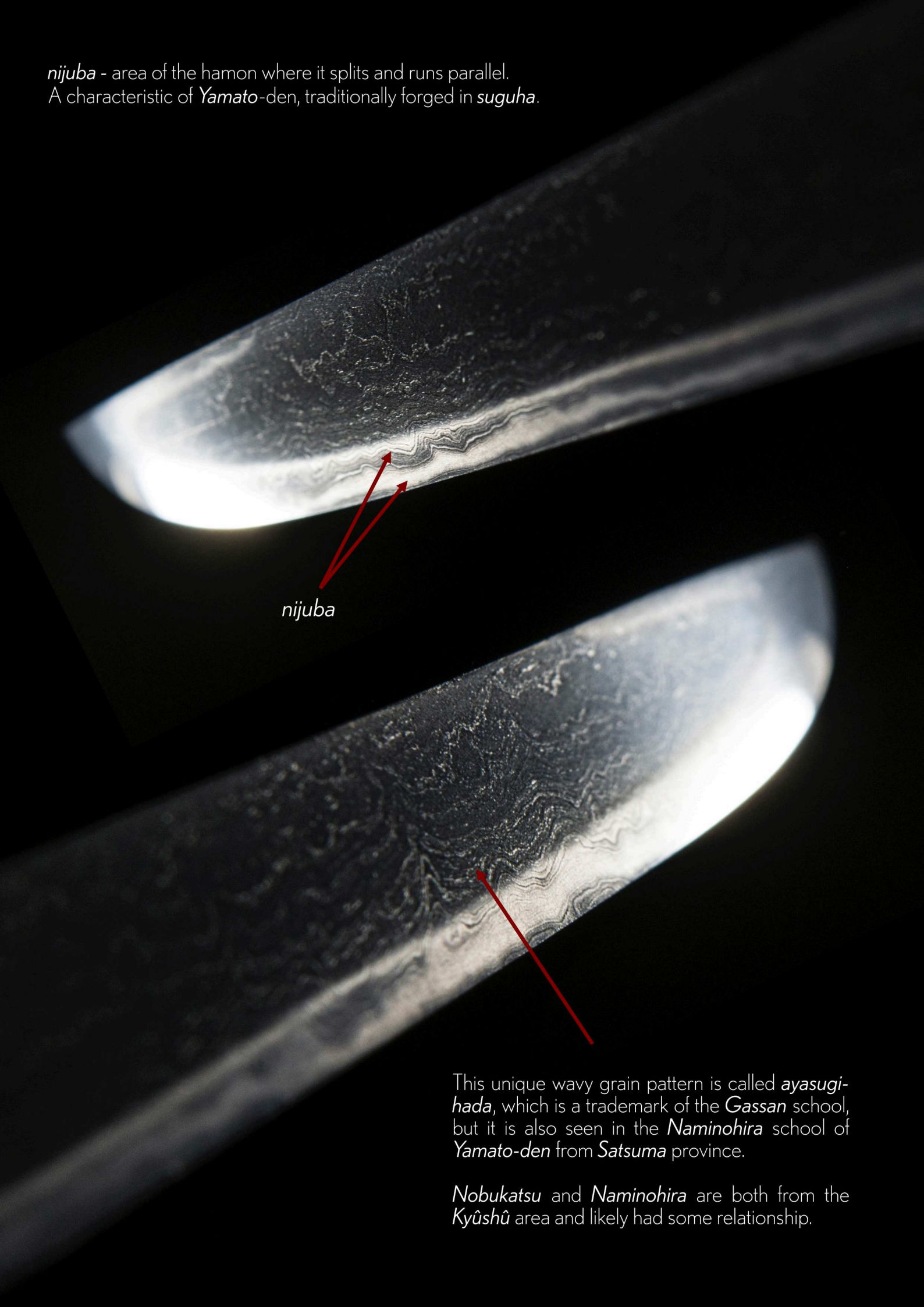




chikei, impressive dark channels of *nie* crystals burrow through the *ji* (body) of the sword.



nijuba - area of the hamon where it splits and runs parallel.
A characteristic of *Yamato-den*, traditionally forged in *suguha*.



nijuba

This unique wavy grain pattern is called *ayasugihada*, which is a trademark of the *Gassan* school, but it is also seen in the *Naminohira* school of *Yamato-den* from *Satsuma* province.

Nobukatsu and *Naminohira* are both from the *Kyûshû* area and likely had some relationship.

Spectacular rivers of *kinsuji* flow through the hamon



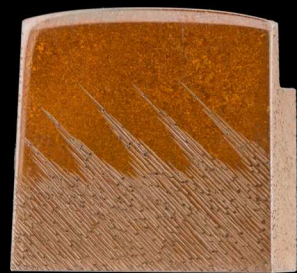
Boshi displays a *suguha-chô* with long round *kaeri*.

** There is a good chance (but no guarantee) that this sword can achieve NBTHK Tokubetsu Hozon level of certification.

Unique Japan can assist with this submission in March 2025.
Please enquire for details.



Shirasaya
(protective scabbard)

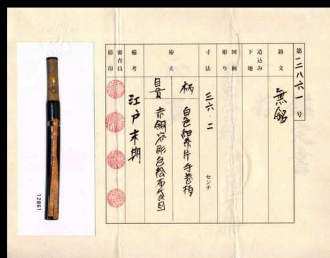


copper *habaki* with
rainfall file marks

*Kuro-ronuri saya
aikuchi-tantô-koshirae*
(黒呂塗鞘合口短刀拵)

*Aikuchi-tantô-koshirae
lacquered in glossy black*

Crafted during the
Late Edo period
(1780~1868)



NTHK-NPO Kanteisho
Certificate of Authenticity



Antique leather sageo



The *tsuka* (hilt) is wrapped with *katate-maki* style



Hotei, the Japanese god of contentment and happiness, guardian of children. He has a cheerful face and a big belly - widely recognised as the *Laughing Buddha*. Hotei carries a large cloth bag over his back, one that never empties, for he uses it to feed the poor and needy.



Fortune arises from a merry disposition.



Look up, way up.





Koshirae bag with aged
floral design

ARIGATO!

THANK YOU FOR DOWNLOADING OUR CATALOGUE.
WE LOOK FORWARD TO SERVING YOU.



*Temperatures dipped to -3C here in England recently (which caused a big panic ;).
I took this photo of a frosted fallen maple leaf.*

PLEASE JOIN OUR VIP MAILING LIST TO BE
INFORMED OF RECENTLY ACQUIRED SWORDS.

EMAIL US AT SERVICE@UNIQUEJAPAN.COM

UNIQUEJAPAN.COM