

Moto-kasane: 10.20mm

Omosa: 445g

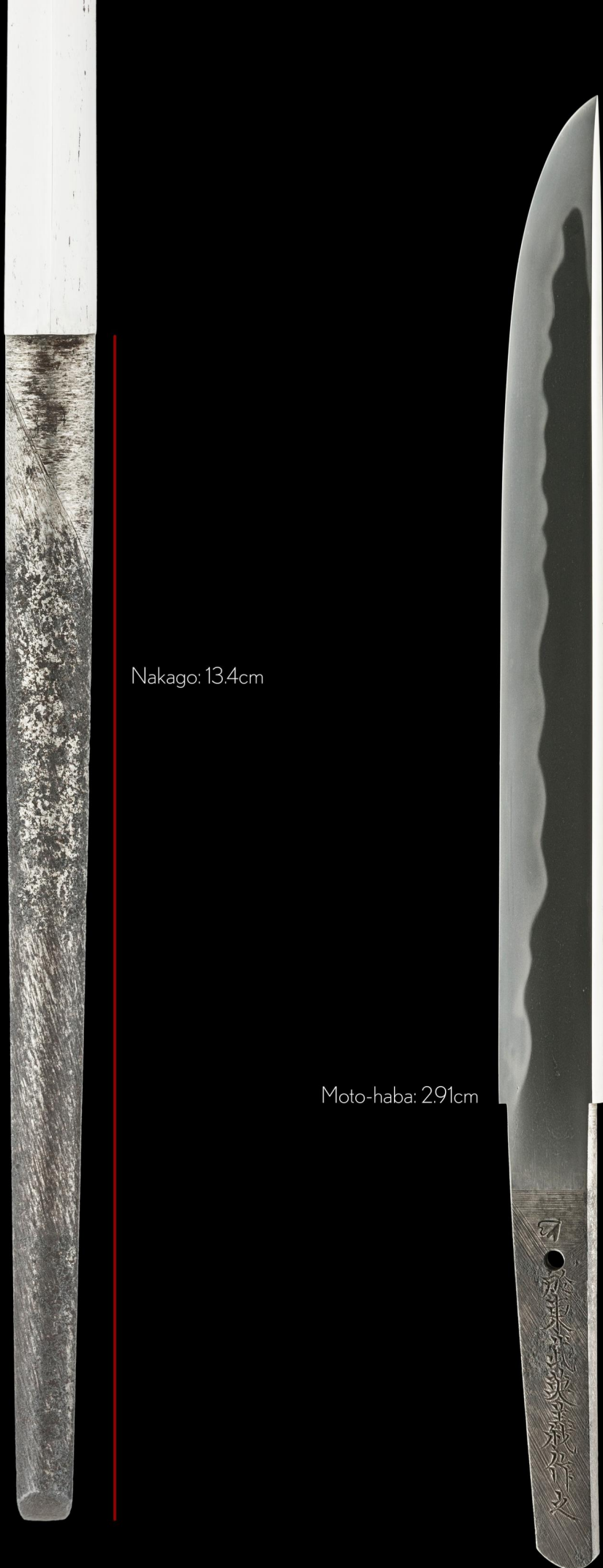
Nakago: 13.4cm

Moto-haba: 2.91cm

Nagasa: 29.4cm

Sori: 0.0cm

Mekugi-ana: 1





Location: *Musashi province*

Swordsmith: *Teruyoshi* (first generation)

ubu-nakago (original, unaltered tang)

o-sujikai-yasurime (diagonal file marks)

(Two petals of a cherry blossom)

於 (Oite)

東 (Tô)

武 (bu)

英 (Teru)

義 (yoshi)

作 (tsukuru)

之 (kore (o))

Bunkyû sannen hachigatsu bi

On a day in the eighth month in Bunkyû 3 (1863)

(Bun) 文

(kyû) 久

(san) 三

(nen) 年

(hachi) 八

(gatsu) 月

(bi) 日



10199801



No. 143088



鑑定書

長九寸七分

一短刀 銘

(桜花三葉文) 於東武英義作之
文久三年八月日

右は當協會に於て審査の結果特別保存刀劍と
鑑定しこれを証する

平成十年二月九日

財団法人日本美術刀剣保存協會



NBTHK Tokubetsu Hozon Certificate of Designation

A sword designated as *Especially Worthy of Conservation*
by the Society for the Preservation of the Japan Art Sword

Issued in the 10th year of Heisei (1998), February 9th

One, *Tantô*

Mei (signature)

(*Ôka futaba mon*) *Tôbu ni oite Teruyoshi kore o tsukuru*
Bunkyû sannen hachigatsu bi

Nagasa (length)

9-sun 7-bu (29.4cm)

Nihon Bijutsu Token Hozon Kyokai
(NBTHK)



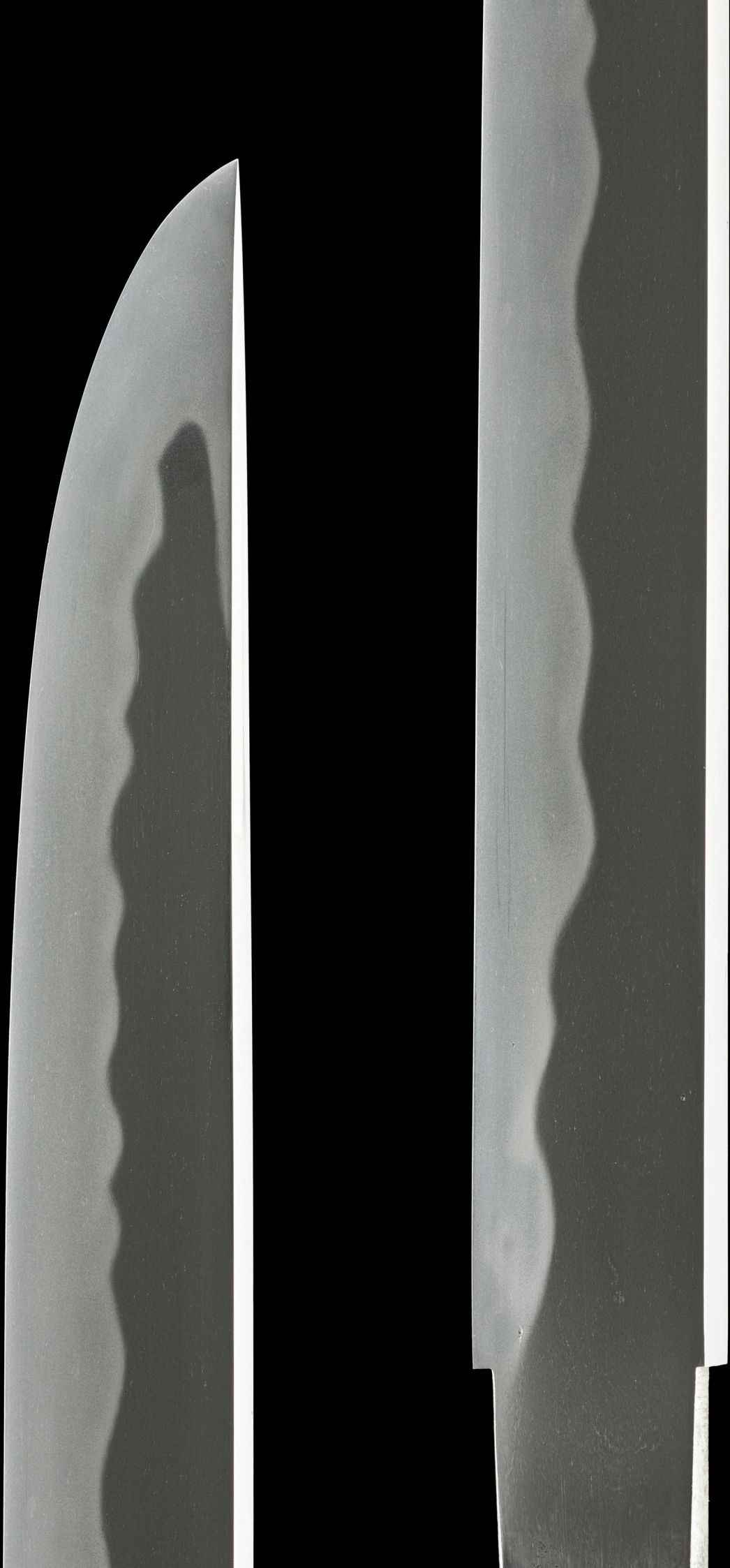
於東武英義作之
Tôbu ni oite Teruyoshi kore o tsukuru
Crafted by Teruyoshi in Musashi province

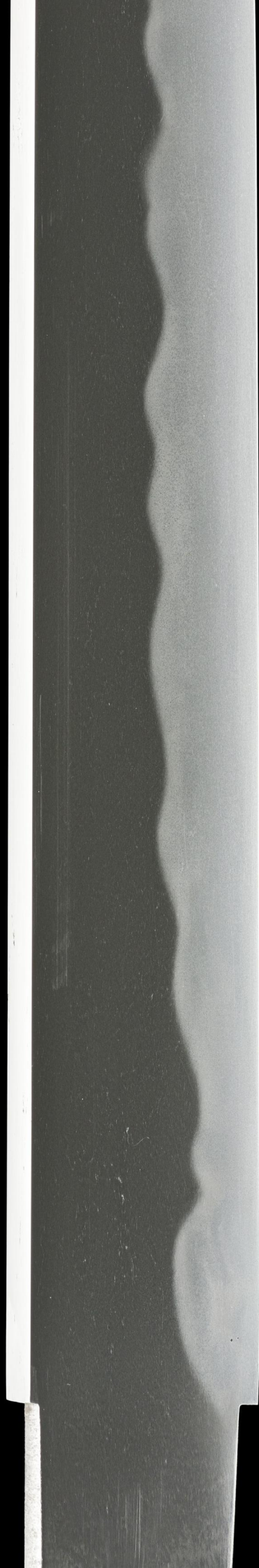
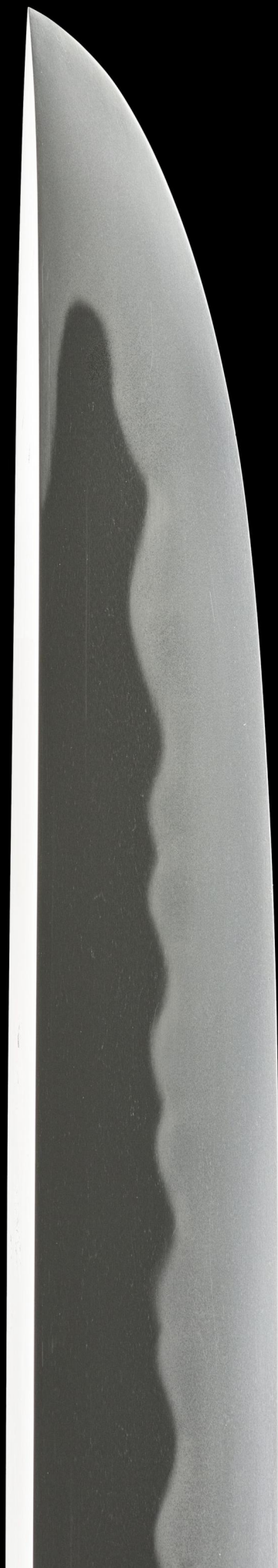
文久三年八月日
Bunkyû sannen hachigatsu bi
On a day in the eighth month in Bunkyû 3 (1863)

櫻花二葉有之
Ôka futaba kore ari
Two petals of cherry blossom

刃長九寸六分有之
Hachô 9-sun 6-bu kore ari
Blade length ~29.1 cm

昭和甲寅年夏 寒山誌「花押」
Shôwa kinoe tora doshi natsu Kanzan shirusu + kaô
Written by Kanzan (Satô Kanzan) in summer of the
year of the tiger in Shôwa (1974) + monogram

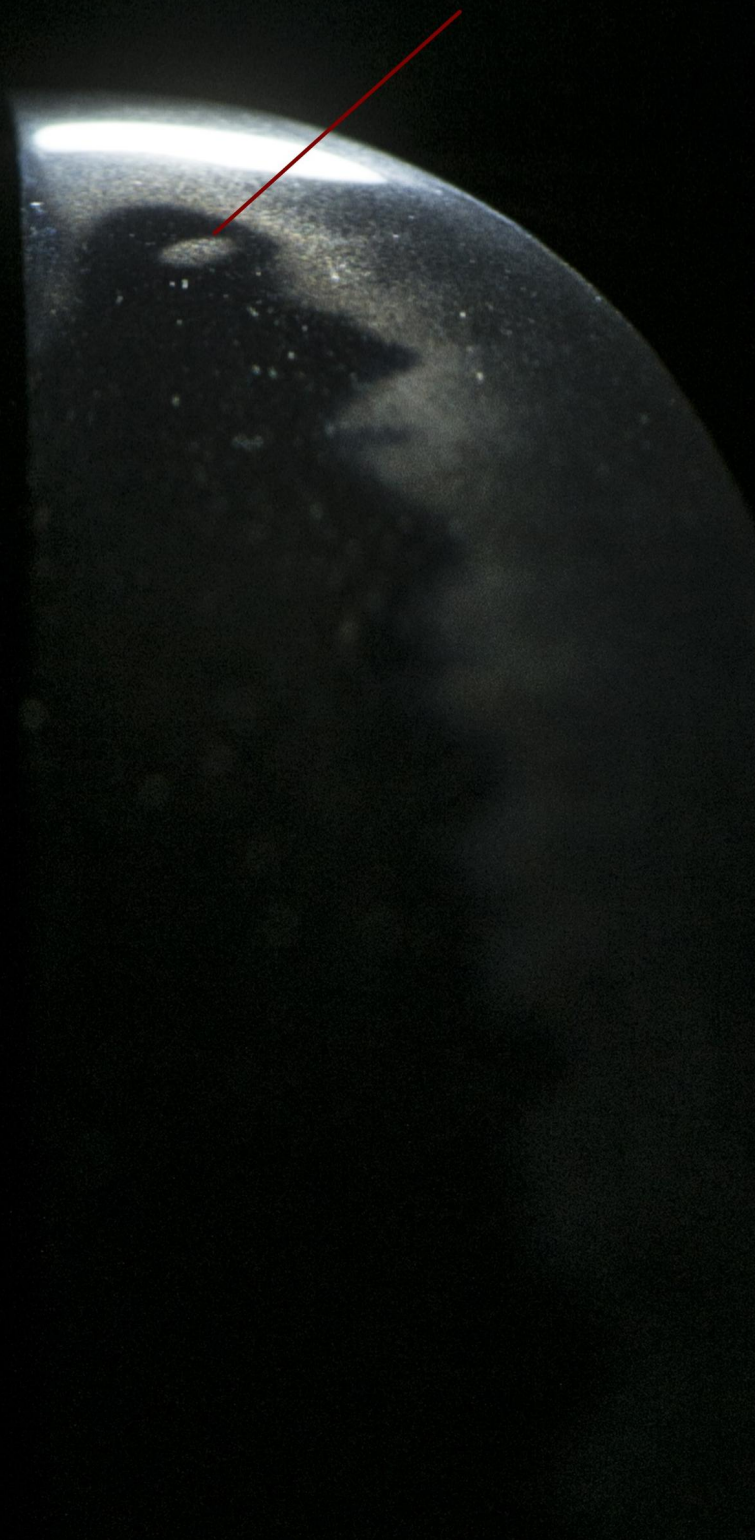




The hamon of the *kissaki* (tip) is called the *boshi*, which literally means "hat". The quenching of the *boshi* requires great skill and timing.

The shape of this *boshi* is a combination of two patterns, *midare komi* (irregular wavy pattern) to the *rounded head of Jizo* at the very tip, or *saki*. These words are combined to become "*saki-Jizo*".

Jizo derives itself from *Jizo Bosatsu* is an important deity seen as a saviour for both pregnant women and children. Notice the *tobiyaki spot* that appears to give *Jizo* an eye!



statues of Jizo

A gorgeous *gunome-choji-midare hamon* blesses the sword.



An eye-catching island of *nie-crystals* has embedded itself in the hamon.





Shirasaya
(protective scabbard)



gold *habaki* with
straight file marks

*Kuro-roiro-nuri saya
tantô-koshirae*
(黒呂色塗鞘打刀拵え)

*Tantô-koshirae
lacquered in glossy black*

Crafted during the
Late Edo period
(1780~1867)





Tsuba





Menuki (decorative grips on the hilt) appear the depiction of lucky gods. *Yebisu* is the Japanese god of fishermen, luck, as well as the guardian of the health of small children.



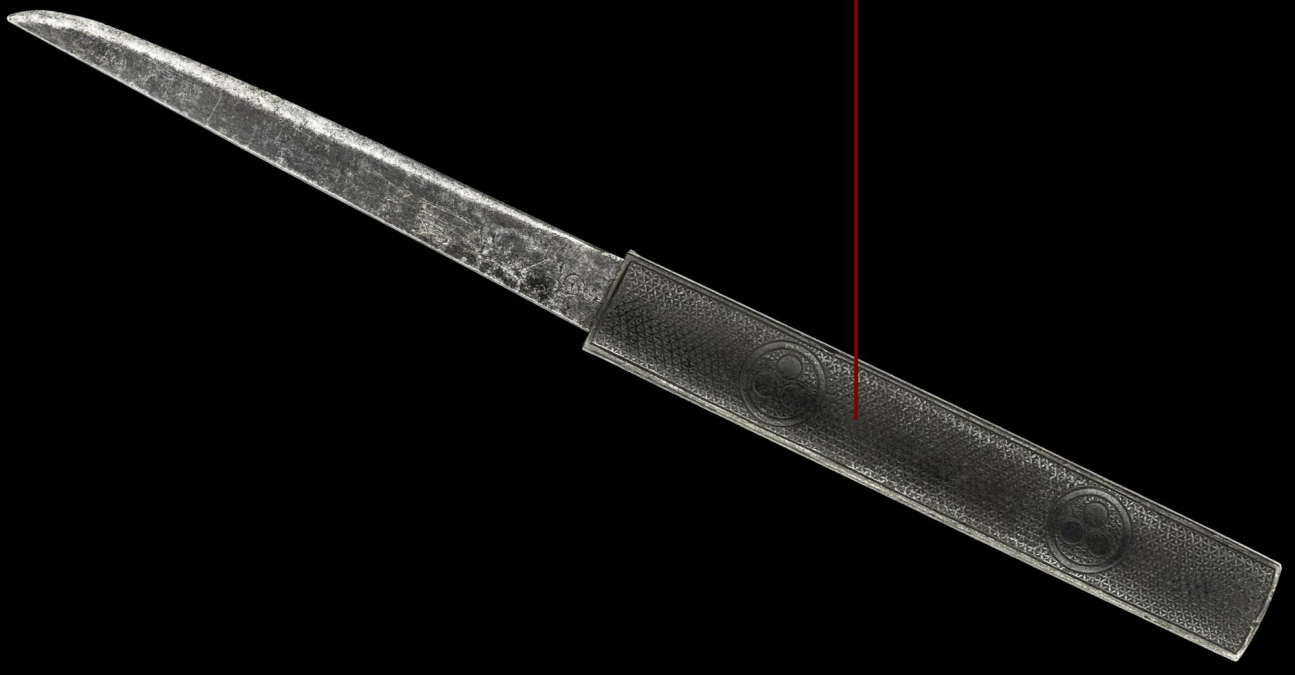


Yebisu is one of the Seven Gods of Fortune (*shichifukujin*), and the only one of the seven to originate purely from Japan.

Yebisu is often depicted with a seam bream, fishing rod and basket as seen on the *fuchi* (collar) here.

Yebisu beer (first brewed in Ebisu, Tokyo) displays the lucky god on it's packaging.





kozuka (utility knife)



Kashira with matching
kamon (family crest)



koshirae bag