



ITEM# UJKG008

A MASAMINE KOGATANA

SIGNED & DATED, GENDAITÔ PERIOD (SHÔWA ERA: FEBRUARY 1984)

Swordsmith: *Masamine (Sumitani, Living National Treasure)*
Measurements: **Length:** 7.5cm (*ubu*) **Sori:** 0cm **Moto-haba:** 1.43cm **Weight:** 20g
Jihada: *Beautiful masame-hada with chikei*
Hamon: *Gunome midare with midare-komi mixed with ashi*
Certificate #1-2: **NTHK-NPO Kanteishô** (*kogatana and koshirae certified as Authentic*)
Included: *Shirasaya, koshirae, presentation box, fabric bags, kit, printed description*

SOLD

Ryôsanshi Masamine (also read *Seihô*) was born *Sumitani Yoichirô* on January 24th 1921. In 1956 he established the forge *Sanryûtei* and was awarded Japan's highest honour of *ningen-kokuhô* (Living National Treasure) in 1981 becoming one of the most influential modern-day swordsmiths. In 1975, he began research into *tôsu* (small knives) modelled after those found in the *Shosoin* Repository. In 1986, he held an exhibition of such small works, and it is believed that this delightfully rare *kogatana* (small blade) was created as part of that research. With a cutting edge of 7.5cm, this miniature masterpiece has been forged in pure *masame-hada* with a bright *gunome-midare hamon* that was polished by a *mukansa* polisher. This unique piece must not be confused with a simple *kozuka* blade, it is wider, has a *habaki* and carries more artistic merit. In fact, the NTHK-NPO informed us that the judges rate this piece as *Yûshûsaku* (MasterWork) level. This little dynamo comes housed in a beautiful *maki-e* decorated *koshirae* and charming storage box.

Moto-kasane: 3.7mm

Omosa: 20g

Nakago: 5.0cm

Moto-haba: 1.43cm

Nagasa: 7.5cm

Sori: 0.0cm

Mekugi-ana: 1



Ryôsanshi Masamine (also read *Seihô*) was born *Sumitani Yoichirô* on January 24th 1921. In 1941, after graduating from *Ritsumeikan* University with a degree in mechanical engineering he began an apprenticeship under *Sakurai Masayuki* - a swordsmith in the lineage of the famous late-Edo period master *Koyama Munetsugu* (固山宗次) - and in 1956 established the forge *Sanryûtei*. He became *mukansa* in 1966 and was awarded Japan's highest honour of *ningen-kokuhô* (*Living National Treasure*) in 1981 and became one of the most influential modern swordsmiths.

Masamine is best known for the elegant and flamboyant *chôji-midare* hamon pattern, especially the distinctive style known as "*Sumitani chôji*," inspired by the *Bizen Ichimonji* school of the *Kamakura* period. He also favoured classical forms and emphasised both aesthetic beauty and functional integrity. He also played a major role in preserving traditional sword culture by crafting sacred treasure swords for the Ise Grand Shrine's ritual and ceremonial swords for the Imperial Household.

It is noted that around 1975, he began research into *tôsu* (small knives) modelled after those found in the *Shosoin* Repository. In 1986, he held an exhibition of such small works, including *tôsu* with *bachiru* (engraved and dyed ivory) scabbards. It is believed that this delightfully rare *kogatana* (small blade) was created as part of that research.

With a cutting edge of 7.5cm, this miniature masterpiece has been forged in pure *masame-hada* (straight grain) with a bright *gunome-midare hamon* that was polished by a *mukansa* (top-class) polisher. This piece must not be confused with a *kozuka* blade, it is wider, has a *habaki*, and carries more artistic merit. In fact, the NTHK-NPO sword organization informed us that the judges personally loved the blade and rate this piece as *Yûshûsaku* (MasterWork) level.

This little dynamo comes housed in a beautiful *maki-e* decorated *koshirae* and charming storage box.





正 (Masa)

峯 (mine)

作 (saku)

Family name: *Sumitani*
Swordsmith: *Masamine* (first generation)

ubu-nakago (original, unaltered tang)
keshô-yasurime (decorative file marks)

(Kinoe) 甲

(ne) 子

(doshi) 年

(ni) 二

(gatsu) 月





(hi) 日

Kinoe nedoshi nigatsu hi

Dated on a day in the second month of
the Year of the Rat (February 1984)





捺 審 査 印 員	備 考	中 心	彫 刻	銚 子	刃 紋	鍛	造り 込 み	銘 文	第一三二七〇号
   		目釘穴 一個			互の目小沸付足入る 乱れ込み鑿か下返る	在目詰丸	草滿造り、庵棟、生糸中心	表、正峯作 裏、甲子年二月	

NTHK-NPO Kanteisho
Certificate of Authenticity

This kogatana was designated as *Authentic*
by the Non-Profit Society for the Preservation of the Japanese Sword

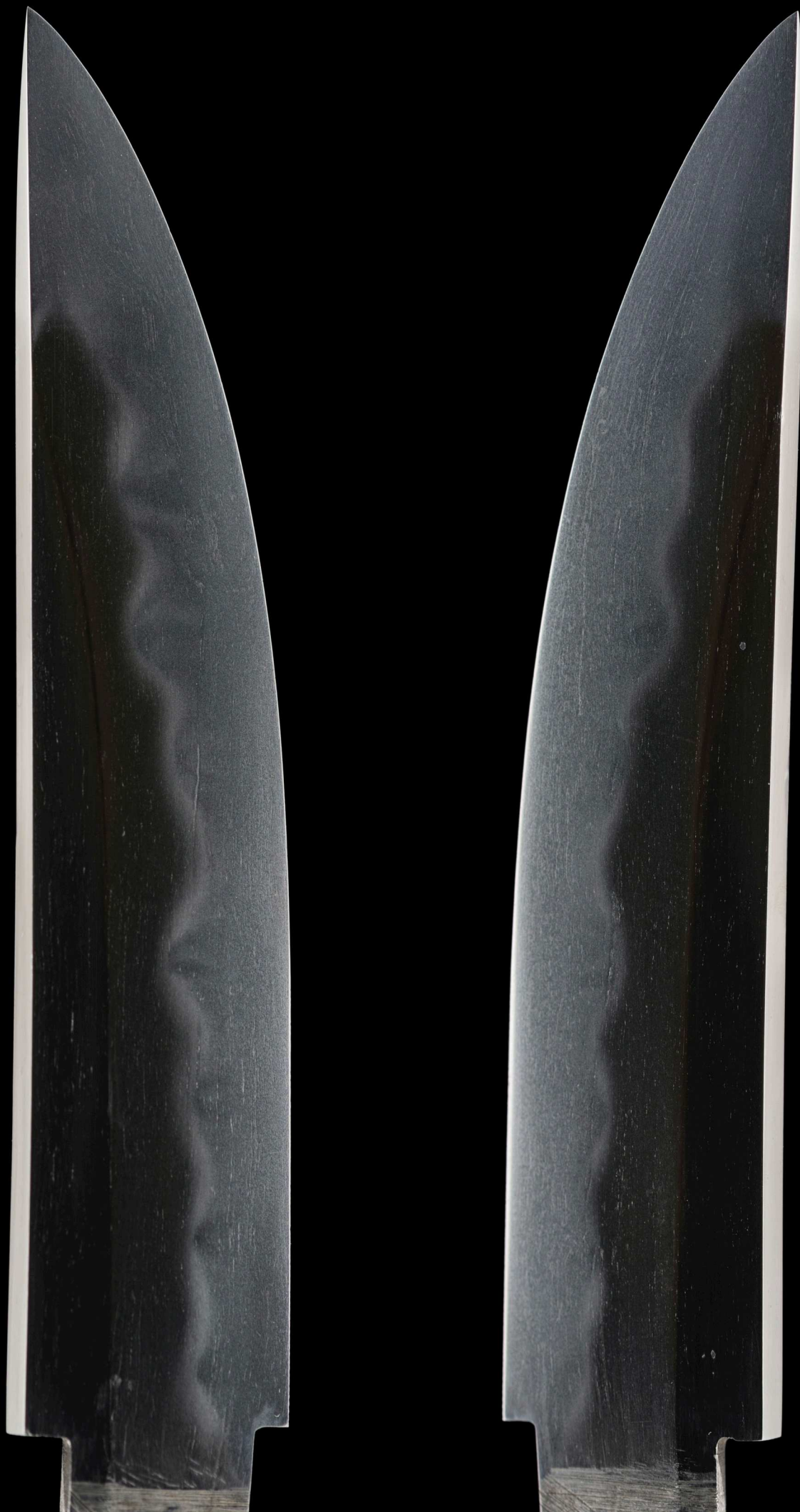
One, Kogatana

Mei (signature)
Masamine saku
Kinoe nedoshi nigatsu


Nagasa (length)
2-sun 5-bu (7.5cm)

Issued in 7th year of Reiwa (2025), April 20th

Nihon Token Hozon Kai
(NTHK-NPO)



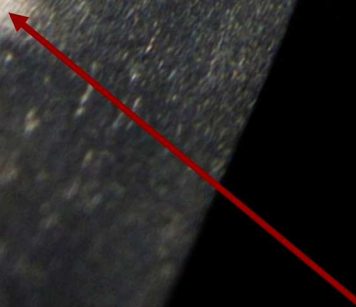
A flowing *masame-hada* brushes the blade.



masame-hada
(straight grain)

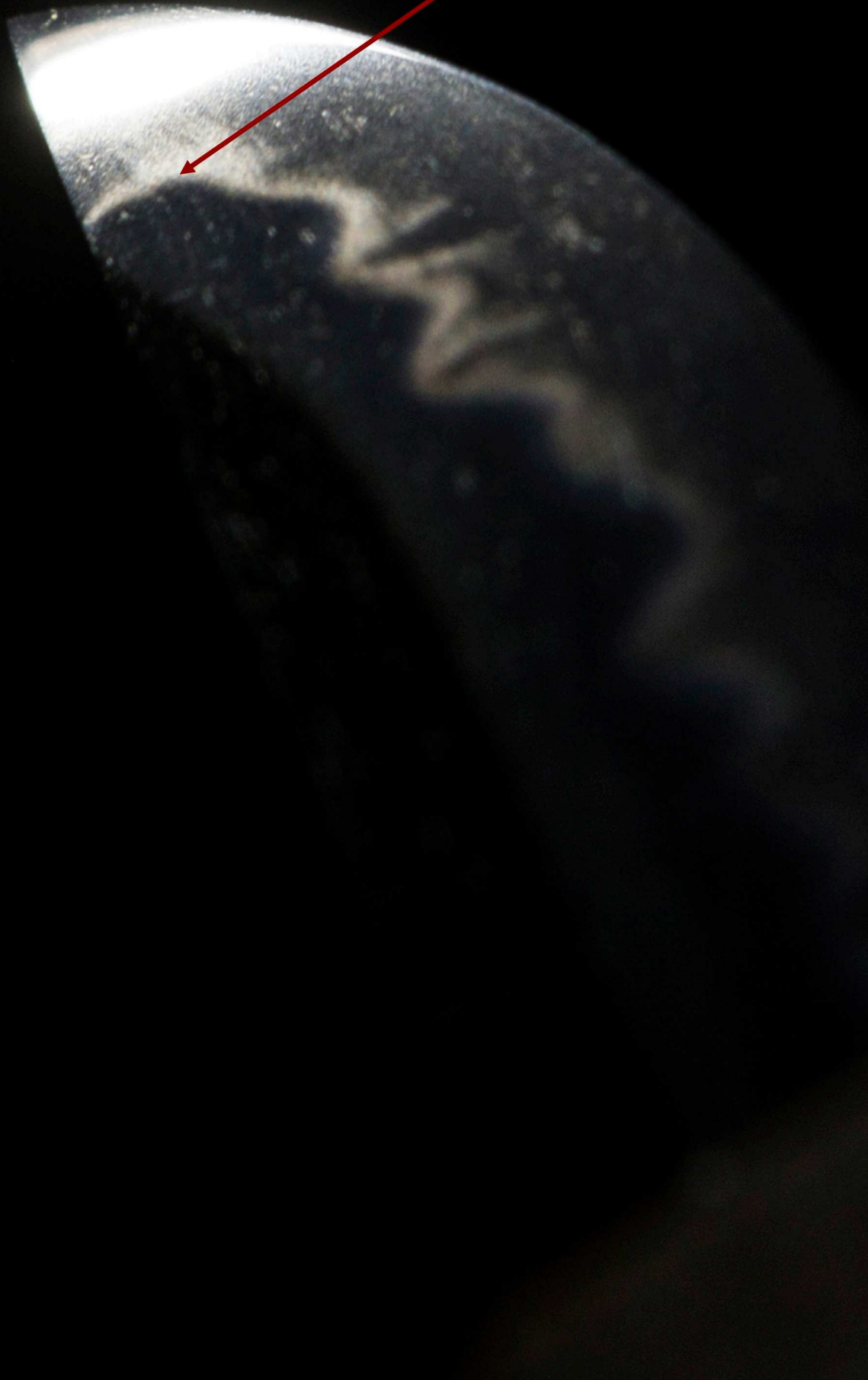
The image shows a close-up of a sword blade with a dark, textured surface. Two red arrows point to specific areas of the blade's grain. The grain is a straight, wavy pattern of light-colored lines against a dark background. The blade is illuminated from the top, creating a bright, curved highlight along its edge.

utsuri appears (wow)



gunome-midare

midare-komi boshi

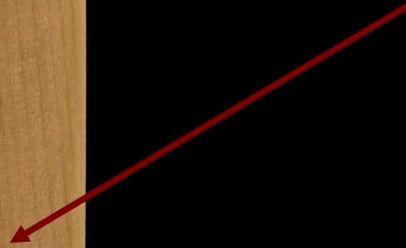


A star is born.

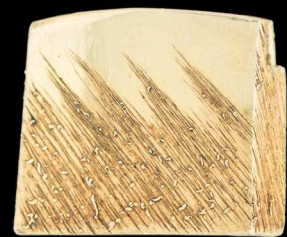




sayagaki potential



Shirasaya
(protective scabbard)



gold *habaki* with
rainfall file marks



This *kogatana* comes with a lacquered box that is neatly designed to store both the blade and the *koshirae*. The box is decorated with *maki-e* artwork of a weeping willow and *sakura*.



Life-size when printed on A4 paper

Happy times





Koshirae bag with floral pattern