



ITEM# UJKA488

CURRENTLY AVAILABLE

A SHIKKAKE KATANA

UNSIGNED, KOTÔ LATE KAMAKURA ~ NAMBOKUCHÔ PERIOD (1288~1342)

Swordsmith:	<i>Shikkake school</i> (尻懸, attribution)
Measurements:	Length: 64.4cm (<i>o-suriage</i>) Sori: 1.1cm Moto-haba: 2.69cm Weight: 635g
Jihada:	<i>Textbook shikkake-hada displaying mokume-hada and flowing masame, chikei</i>
Hamon:	<i>Lovely ko-gunome with sunagashi, kinsuji, tobiyaki and plenty of ashi</i>
Certificate #1:	NBTHK Tokubetsu Hozon (sword Especially Worthy of Preservation)
Certificate #2-4:	NTHK-NPO Kanteishô (<i>koshirae</i> , <i>fk</i> and <i>tsuba</i> certified as Authentic)
Authentication:	Sayagaki & tsunagi-gaki by Nozomi-san (<i>shodô</i> artist)
Included:	<i>Shirasaya, Meiji koshirae, fabric bags, kit, printed description</i>

\$12,000

The *Shikkake* school, one of the five classic traditions of *Yamato-den*, was based in the *Shikkake* area behind *Tôdai-ji* temple in *Nara*. The school produced fine swords primarily for temple protection and identifiable by their skilled, distinctive workmanship. This *katana* is *ô-suriage* blade that retains a clean, graceful presence. The *jihada* is a glorious example of *shikkake-hada* combining *mokume-hada* with clear straight-lined *masame-hada* in the *yakiba*. The *hamon* is bright and wavy *ko-gunome* interwoven with *ashi*, *sunagashi*, *kinsuji* and *tobiyaki*. A beautiful set of *koshirae* centres around a gorgeous *saya* featuring luxurious *mokume*-style black and gold lacquer work that was inspired by the *jihada* of the sword. The *tsuba* is signed by *Chôshu Tomonori* and takes the form of a meaningful lotus flower and evokes a spiritual impermanence. Powerful gold cloud-dragon *menuki* embody both ferocity and protection, qualities revered by samurai warriors throughout Japan's history.

^
Saki-kasane: 3.5mm

Moto-kasane: 5.0mm

Omosa: 635g

Kissaki: 3.2cm
Saki-haba: 1.85cm

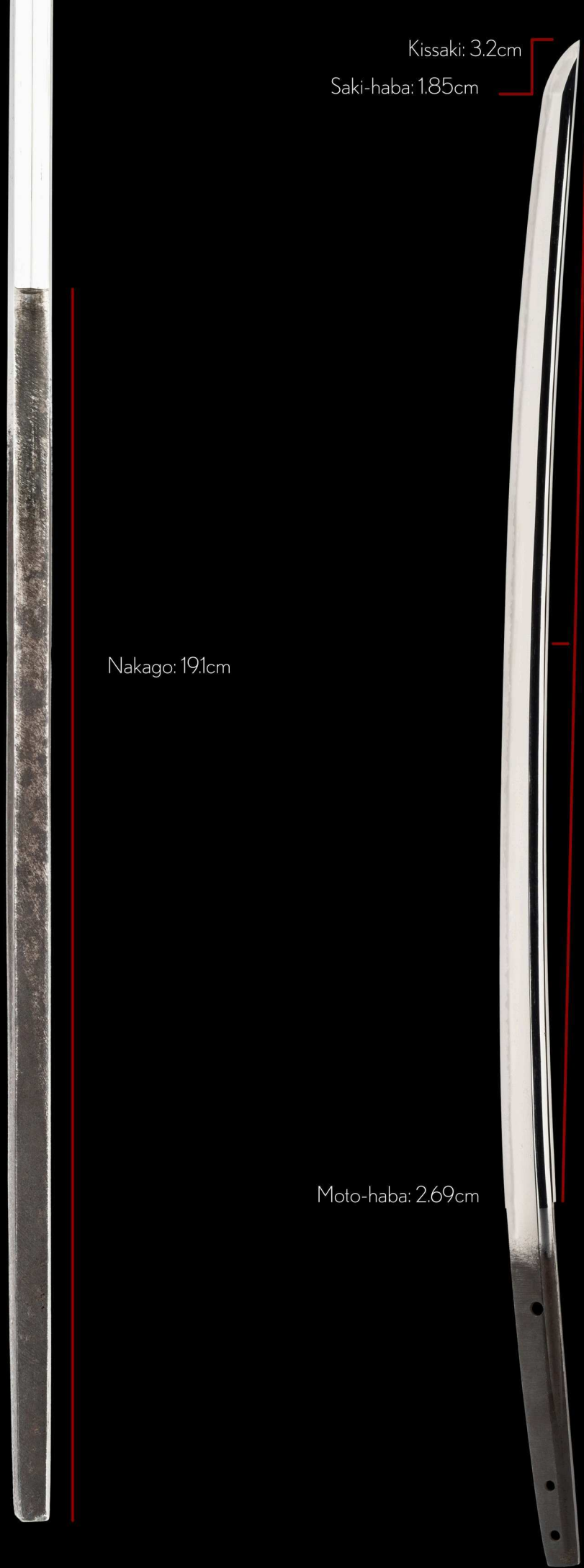
Nakago: 19.1cm

Moto-haba: 2.69cm

Nagasa: 64.4cm

Sori: 1.1cm

Mekugi-ana: 3

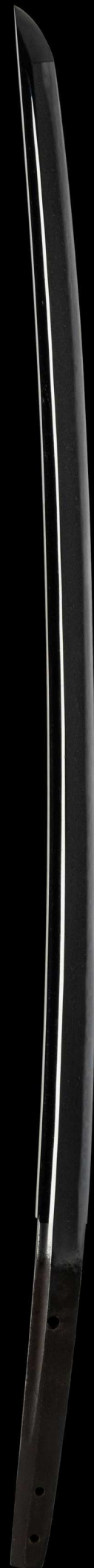


The *Shikkake* (尻懸) school, one of the five traditions of *Yamato-den* (大和伝), was active from the late *Kamakura* to the early *Nanbokuchô* period. Based in the *Shikkake* area behind *Tôdai-ji Temple* in *Nara*, the school was part of a group of temple-affiliated swordsmiths. While its founder is traditionally said to be *Norihiro* (則弘), no signed works by him are known to exist. His son *Norinaga* (則長) is regarded as the de facto originator of the *Shikkake* lineage. These smiths produced robust swords primarily for temple use rather than commercial distribution, and many of their extant blades are unsigned but identifiable by their distinctive workmanship.

This katana is a unsigned and *ô-suriage* blade that retains a clean, graceful silhouette suggestive of its original long length. The *jihada* is a glorious example of *shikkake-hada* combining primarily *mokume-hada* in the body of the sword with clear straight-lined *masame-hada* in the *yakiba* (hardened area) - especially prominent in the *kissaki*. The *hamon* is bright *ko-gunome* interwoven with *ashi*, *sunagashi*, *kinsuji* and *tobiyaki*. This is classic *Yamato-den* workmanship of the *kotô* period, where the small details carry big impact. As such, the sword was rightfully awarded a *Tokubetsu Hozon* certificate from the NBTHK.

Its beautiful set of *koshirae* has been dated to the *Meiji* period (1876~1912) and centres around a gorgeous *saya* featuring luxurious *mokume*-style black and gold lacquerwork that echoes the steel grain of the sword. The stunning signed *tsuba* by *Chôshu Tomonori* is in the form of a lovely lotus flower and evokes a spiritual impermanence of all living matter. Powerful gold cloud-dragon *menuki* are a symbol of martial strength and divine power, embodying both ferocity and protection, qualities revered by samurai warriors throughout history.

Centuries-old and commanding. This *Shikkake* katana balances sophistication with martial presence.





WATCH PABLO'S YOUTUBE PRESENTATION OF
UJKA488 - A SHIKKAKE KATANA

[UNIQUEJAPAN.COM/UJKA488-VIDEO](https://uniquejapan.com/ujka488-video)





nakago (tang)

Location: *Yamato province*
School: *Shikkake*

ô-suriage-nakago (shortened tang)
kiri-yasurime (horizontal file marks)

特保
06202412

No 1024140



鑑定書

一刀 無銘 (尻懸)

長二尺一寸二分半

右は當協會に於て審査の結果特別保存刀剣と
鑑定しこれを証する

令和七年二月二十一日

公益財団法人日本美術刀剣保存協會



楠木準 教育委員会
第 50142 号
平成17年11月17日

NBTHK Tokubetsu Hozon Certificate of Designation

A sword designated as *Especially Worthy of Conservation*
by the Society for the Preservation of the Japan Art Sword

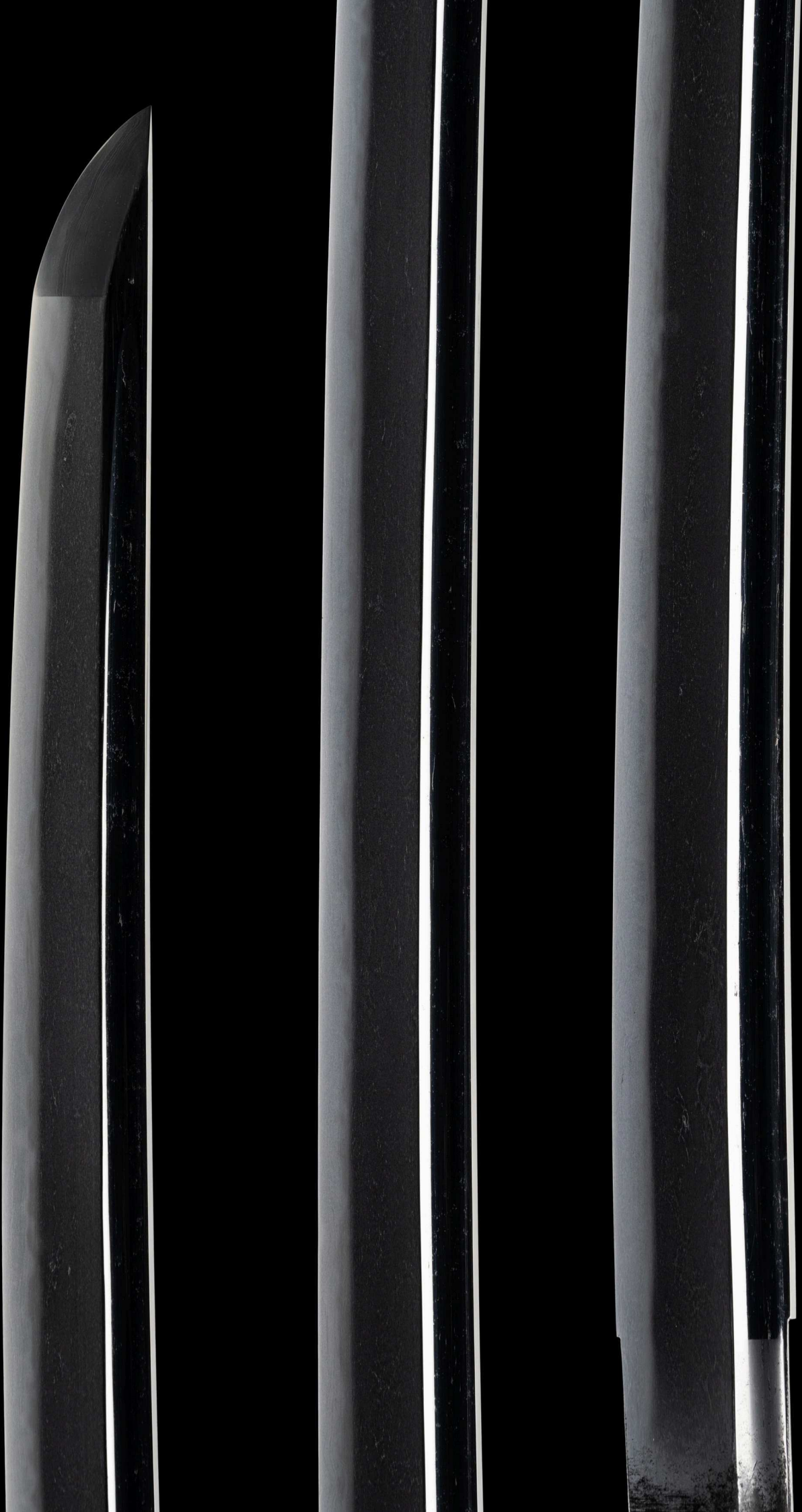
Issued in the 7th year of Reiwa (2025), February 21st

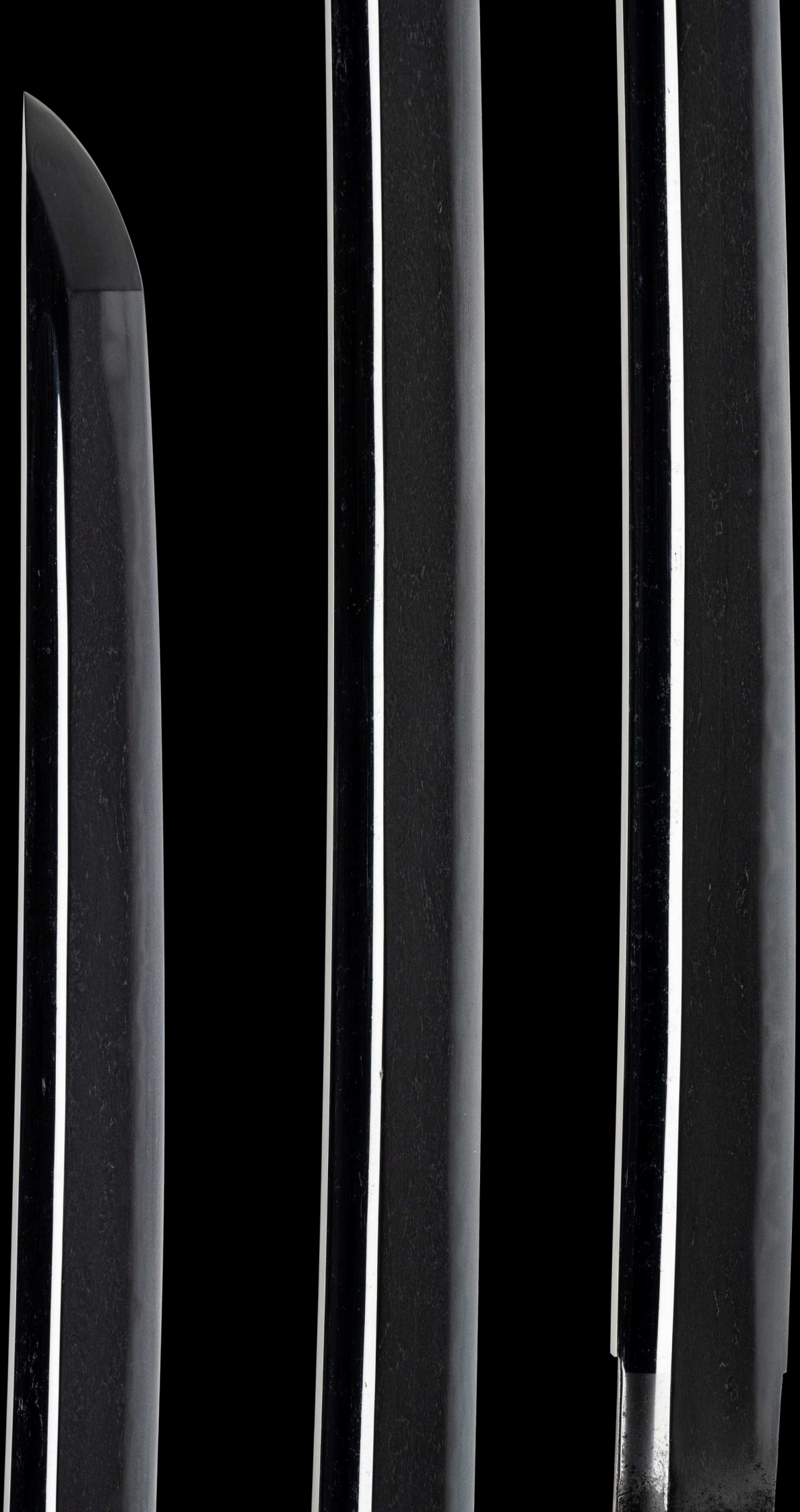
One, Katana

Mumei (unsigned)
Shikkake

Nagasa (length)
2-shaku 1-sun 2-bu han (64.4cm)

Nihon Bijutsu Token Hozon Kyokai
(NBTHK)

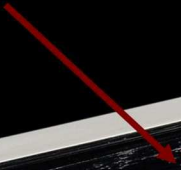




The *hi* (groove) carved into the surface serve both practical and aesthetic purposes. Functionally, they help reduce the overall weight of the blade without sacrificing its structural integrity - allowing for improved handling and responsiveness while maintaining strength. Artistically, a groove adds a sense of rhythm, symmetry, and depth to the blade's visual design.

This sword features a wide *bôhi*, a thick straight groove running along the blade.

bôhi





mokume-hada

masame-hada

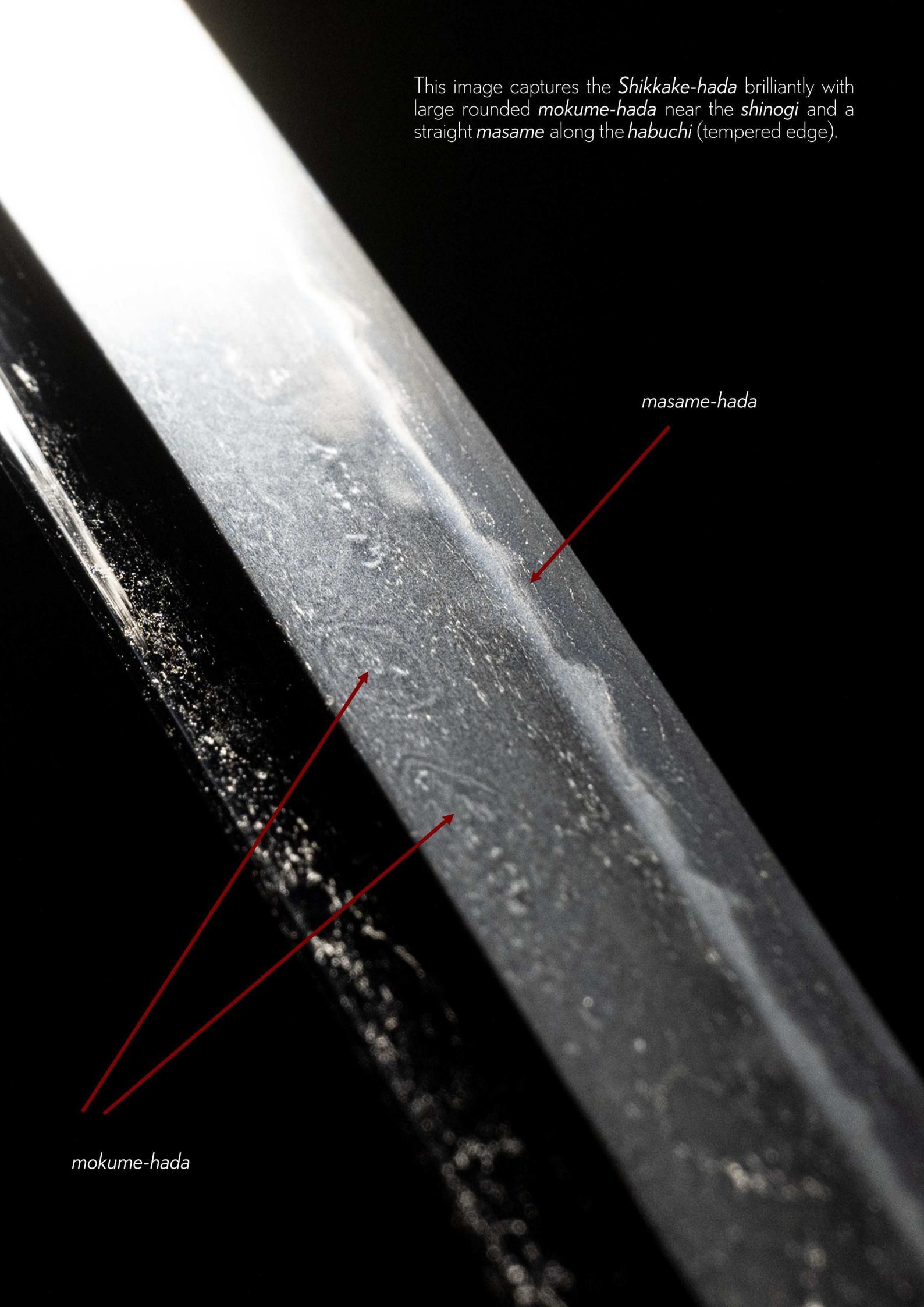
The *Shikkake* school was known for a forging pattern that features *masame* (straight grain) in the *hamon* area with a *mokume* (burl grain) closer to the *shinogi* ridge line. This unique characteristic is showcased perfectly on this sword.



ashi

A bright *ko-gunome* with pointed *ashi* (legs) gives the hamon an imposing personality.

This image captures the *Shikkake-hada* brilliantly with large rounded *mokume-hada* near the *shinogi* and a straight *masame* along the *habuchi* (tempered edge).



masame-hada

mokume-hada

There is a genuine *kotô* period feel to this katana. With its deep lines of *kinsuji* mixed with *sunagashi*, *chikei* and *tobiyaki*, it's a sword that offers an invitation to the distant samurai past.



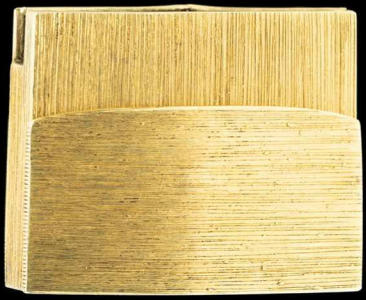


History flows like a river.
Harness that energy.



尻懸
Shikkake
Shikkake school

Shirasaya
(protective scabbard)



Well-made gold *habaki*
with copper base

*Kin-mokume-nuri saya
uchigatana-koshirae*
(金杳目塗鞘打刀拵)

*Uchigatana-koshirae
lacquered in gold with
wood grain texture*

Crafted during the
Meiji period
(1868~1912)



NTHK-NPO Kanteisho
Certificate of Authenticity

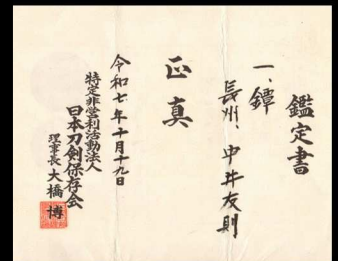


The *saya* is black lacquer with a gold *mokume* pattern - swirling cycles suggesting reincarnation. A fitting design for a blade from the *Shikkake* school, whose smiths worked for temples.



This *tsuba* is the work of *Nakai Tomonori* (中井友則), a metalworker active in late *Edo*-period *Hagi, Chôshû* province. *Chôshû* was one of the regions in Japan with the highest concentration of *tsuba* artisans. While the most prominent school there descended from the *Umetada* lineage that had migrated from *Kyôto*, the *Nakai* family had already established itself as a distinguished line of *tsuba* makers prior to their arrival. Their style traces its roots to the *Shôami* tradition.

The motif is that of a lotus flower. Executed in masterful openwork with deep carving, even the *hitsu-ana* has been seamlessly integrated into the leaf design. The *tsuba* was originally adorned with extensive gold inlay, giving it a lavish appearance. Now, with only traces of the gold remaining, it exudes a quiet elegance that evokes the impermanence of all things.



Chôshû Hagi jû Nakai Tomonori saku
crafted by Nakai Tomonori, a resident of Hagi in Chôshû province



(Naka) 中

(i) 井

(Tomo) 友

(nori) 則

(saku) 作

長 (Chô)

州 (shû)

萩 (Hagi)

住 (jû)



(reverse)



A mysteriousness resonates from the *tsuka* (hilt) with its *samekawa* (rayskin) lacquered in black, and further braided in a traditional black silk. A waxy look has developed on the silk through years of natural use by its former owner, possibly a former *iaido* practitioner.



A solid gold cloud dragon (*unryû*) *menuki* emerges from the depths below. In Japanese iconography, the cloud dragon is often seen as a symbol of martial strength and divine power, embodying both ferocity and protection – qualities revered by warriors throughout history.





The *fuchi* and *kashira* were crafted by different artisans.

The *fuchi* has been attributed to the *Kusakari* (草刈) school of *Sendai*, known for its fine linear *hira-zôgan* inlay work, a hallmark of the school. Its motifs include a combination of two interlocking circles – known as the *wachigai-mon* – paired with pine needles. The *wachigai-mon* is a motif seen as far back as the *Heian* period on scrolls carrying Buddhist symbolism, said to represent the interlocking realms of wisdom and reason.

The *kashira* features a dynamic wave design with subtle touches of gold that harmonizes with the gold-lacquered *saya* (scabbard).



A katana that draws you in.



Koshirae bag with floral pattern.

ARIGATO!

THANK YOU FOR DOWNLOADING THIS PDF DESCRIPTION.

ALL AVAILABLE SWORDS ARE OFFERED ON A "FIRST-SERIOUS-HOLD-REQUEST", FIRST SERVED BASIS. PLEASE EMAIL ME (SERVICE@UNIQUEJAPAN.COM) STRAIGHT AWAY WITH QUESTIONS AND FURTHER PHOTOS AND/OR ADVICE REGARDING ANY SWORD OF INTEREST.

SWORDS CAN BE PAID OVER A FEW MONTHS IF REQUIRED. WE CAN DISCUSS PAYMENT PLANS AS CERTAIN PIECES REQUIRE A MORE SIZEABLE INVESTMENT.

EACH SWORD CAN BE LEGALLY OWNED AND EXPORTED OUTSIDE OF JAPAN. ALL SWORDS HAVE CERTIFICATION PAPERS (ORIGAMI) SUCH AS FROM THE NBTHK AND/OR THE NTHK-NPO.

I COMPLETELY RESPECT THAT PURCHASING A SWORD REMOTELY REQUIRES TRUST. YOU'RE RELYING ON PHOTOGRAPHS AND DESCRIPTIONS FOR SOMETHING DEEPLY IMPORTANT. IT'S MY PROMISE TO ANSWER EVERY QUESTION THOROUGHLY. I WANT YOU TO FEEL ABSOLUTELY CONFIDENT THAT THE SWORD YOU CHOOSE IS MEANT FOR YOUR FAMILY TO CHERISH AND PRESERVE.

ALL SWORDS FROM UNIQUE JAPAN ARE GUARANTEED AUTHENTIC AND COME WITH A 3-DAY WORRY-FREE INSPECTION PERIOD UPON ARRIVAL TO YOUR HOME.

DESCRIPTIONS AND AVAILABILITY ARE SUBJECT TO CHANGE WITHOUT NOTICE.

FOR FURTHER INFORMATION:

FIVE STEPS TO OWNING A JAPANESE SWORD
WWW.UNIQUEJAPAN.COM/RESOURCE

WE LOOK FORWARD TO HEARING FROM YOU. WE HAVE SERVICE OFFICES IN TOKYO AND NEAR LONDON, ENGLAND.

THANK YOU,



PABLO KUNTZ
FOUNDER, UNIQUE JAPAN

SERVICE@UNIQUEJAPAN.COM

+44 7954 102 277 (MOBILE ON 'SIGNAL & WHATSAPP' / BRITISH TIME)

UNIQUE JAPAN, FINE ART DEALER
ANTIQUES LICENSE ISSUED BY MEGURO CITY
TOKYO, JAPAN (NO.303291102398)

UNIQUE JAPAN IS THE TRADING NAME OF MARCHFORTH INTERNATIONAL LIMITED.