



ITEM# UJKA456

## A MORIKUNI KATANA

SIGNED, SHINTÔ EARLY EDO PERIOD (KANBUN ERA: 1661~1673)

<b>Swordsmith:</b>	<i>Izumi no Kami Minamoto Morikuni (shodai, first generation)</i>
<b>Measurements:</b>	<b>Length:</b> 67.6cm ( <i>suriage</i> ) <b>Sori:</b> 0.45cm <b>Moto-haba:</b> 2.87cm <b>Weight:</b> 745g
<b>Jihada:</b>	<i>Gorgeous mokume mixed with itame with plentiful chikei</i>
<b>Hamon:</b>	<i>Vibrant gunome-midare with sunagashi and long pointed ashi</i>
<b>Certificate #1:</b>	<b>NBTHK Tokubetsu Hozon</b> ( <i>sword Especially Worthy of Preservation</i> )
<b>Certificate #2-5:</b>	<b>NTHK-NPO Kanteishô</b> ( <i>koshirae, fuchi-kashira and tsuba certified as Authentic</i> )
<b>Fujishiro rank:</b>	<b>Jô-saku</b> ( <i>ranked as a superior swordsmith</i> )
<b>Authentication:</b>	<b>Sayagaki by Nozomi-san</b> ( <i>shôdo artist</i> )
<b>Included:</b>	Shirasaya, Edo koshirae, fabric bags, stand, kit, printed description

**SOLD**

Talented swordsmith *Izumi no Kami Morikuni* was a student of *Izumi no Kami Kaneshige* during the *shintô* period, later becoming known as *Edo Senjuin*. Such great energy is packed into this statuesque katana - expertly forged *mokume* and *itame-hada* provides the foundation for a brilliant *gunome midare hamon* with impressive sawtooth-like *ashi* that bite into the blade. A comparison is often drawn between *Morikuni* and grandmaster *Nagasone Kotetsu*, as they both shared the same *sensei* in *Kaneshige*. A terrific set of *koshirae* features a wonderfully wise *tsuba* by *Mogarashi Sôten* along with a detailed *fuchi-kashira* depicting rats attributed to *Ishiguro Masaaki*. A delightful trio of butterflies form the *menuki* on the regal *jabara-maki* braided silk representing joy and longevity.

Saki-kasane: 4.5mm <sup>^</sup>

Moto-kasane: 6.0mm

Kissaki: 2.76cm  
Saki-haba: 1.94cm

Nagasa: 67.6cm

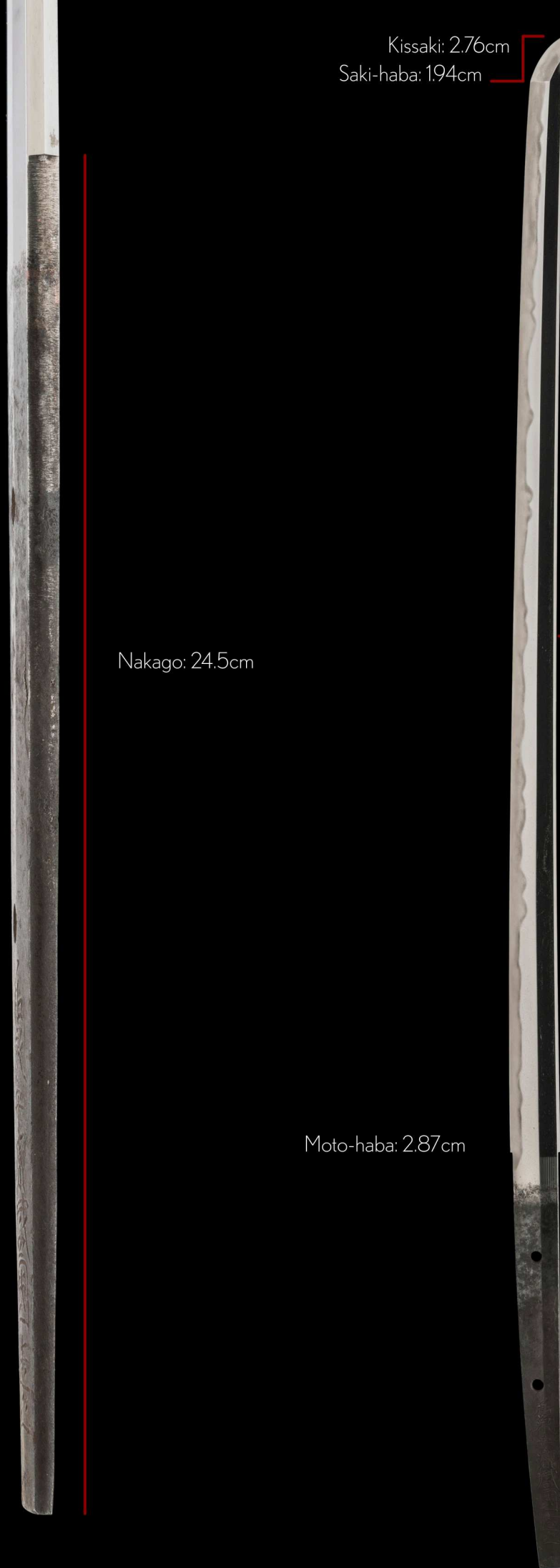
Nakago: 24.5cm

Sori: 0.45cm

Omosa: 705g

Moto-haba: 2.87cm

Mekugi-ana: 2



Talented swordsmith *Izumi no Kami Morikuni* hailed from *Kai* province near *Mount Fuji* and was originally a smith of the *Akasaka Senjuin* (赤坂千住院) lineage.

After leaving for the capital *Edo* (Tokyo), Morikuni studied under the watchful eye of *Izumi no Kami Kaneshige* (和泉守兼重) and was a fellow student with grandmaster *Nagasone Kotetsu* (長曾祢虎徹). Similarities are often drawn in the work of both smiths.

*Morikuni* first signed with the name *Namen Morimasa* and later became known as *Edo Senjuin*.

There is such great energy packed into this statuesque katana by *Morikuni* - expertly forged *mokume* and *itame-hada* provides the foundation for a brilliant *gunome midare hamon* with impressive sawtooth-like *ashi* that figuratively bite into the blade. There is a sense of poise, a balance that shines through in his work, rightfully earning Morikuni the rank of *jô-saku*, a superior smith.

A terrific set of *koshirae* compliments the katana that features a wonderful openwork *tsuba* by *Mogarashi Sôten* along with a marvellously detailed *fuchi-kashira* depicting rats (signifying prosperity and good fortune) attributed to *Ishiguro Masaaki*. A delightful trio of butterflies form the *menuki* on the *jabara-maki* braided silk representing joy and longevity.

As the blade has a *suriage nakago*, this katana is being offered at a very reasonable price - a superb *shintô* period samurai sword to proudly take good care of.





Title: *Izumi no Kami* (Lord of Izumi province)

Clan/Family: *Minamoto*

Swordsmith: *Morikuni* (first generation)

*suriage-nakago* (shortened tang)

*sujikai-yasurime* (diagonal file marks, lower area)

This katana carries an *suriage nakago*, where the *nakago* (tang) has been shortened but the signature remains intact.

A sword was normally shortened purely for practical reasons, primarily to accommodate for the height of a samurai so he can unsheathe more comfortably and rapidly.

The original length of the cutting edge would have been quite long, about 74cm, adding the distance between the two holes to the current *nagasa* of 67.6cm.

和 (I)

泉 (zumi, no)

守 (Kami)


源 (Minamoto)

盛 (Mori)

國 (kuni)

造 (tsukuru)

之 (kore, o)



Confident chisel strokes, that are legible even from an acute angle.

*Morikuni* had a unique and distinctive way of rounding off the characters of his signature. His was an artist at heart.

The image shows two metal blades, likely made of steel, positioned vertically against a black background. The blade on the left is wider and has a circular hole near its base. The blade on the right is narrower and has two circular holes. Both blades exhibit horizontal file marks, which are pointed out by a red arrow. The text 'kiri-yasurime (horizontal file marks)' is written in white next to the arrow. The text '(ura, reverse)' is written in white at the bottom right of the image.

*kiri-yasurime*  
(horizontal file marks)

(*ura*, reverse)

特 保  
05202309

No 1021942

鑑定書

一刀 銘 和泉守源盛国造之

長二尺二寸三分

右は當協會に於て審査の結果特別保存刀剣と  
鑑定しこれを証する

令和五年十二月十五日

公益財団法人日本美術刀剣保存協會



青森県 教育委員会  
第 1865 号  
昭和26年7月3日

## NBTHK Tokubetsu Hozon Certificate of Designation

A sword designated as *Especially Worthy of Conservation*  
by the Society for the Preservation of the Japan Art Sword

Issued in the 5th year of Reiwa (2023), December 15th

One, Katana

*Mei* (signature)

*Izumi no Kami Minamoto Morikuni kore o tsukuru*

*Nagasa* (length)

2-shaku 2-sun 3-bu (67.6cm)

Nihon Bijutsu Token Hozon Kyokai  
(NBTHK)

The fact this katana was awarded Tokubetsu Hozon even though it has  
a strong *suriage nakago* is a testament to the quality of the sword.



和泉守源盛国造之

*Izumi no Kami Minamoto Morikuni kore o tsukuru*

Crafted by Izumi no Kami Minamoto Morikuni

和泉守源盛国造之

時代寛文頃

時代寛文頃

*Jidai Kanbun goro*

Around Kanbun period (1661~1673)

刃長貳尺二寸三分有之

刃長貳尺二寸三分有之

*Hachô 2-shaku 2-sun 3-bu kore ari*

Blade length 67.6 cm

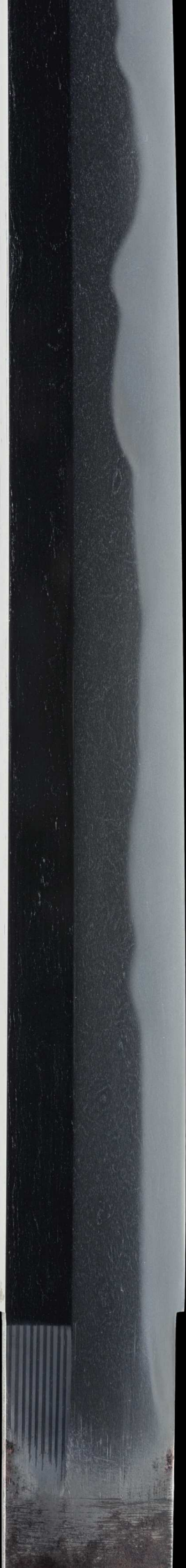
令和七乙巳年卯月吉日誌之

令和七乙巳年卯月吉日誌之

*Reiwa nana kinoto-midoshi Uzuki kichijitsu kore o shirusu*

Written on a lucky day in the fourth month in the seventh year of Reiwa era during the Year of the Snake (April 2025)









*mokume-hada* (rounded)

*itame-hada* (plank grain)



There is a certain poise to this *Morikuni* katana.  
A balanced combination of quality *jihada* and a  
bright and consistent *gunome-midare hamon*.

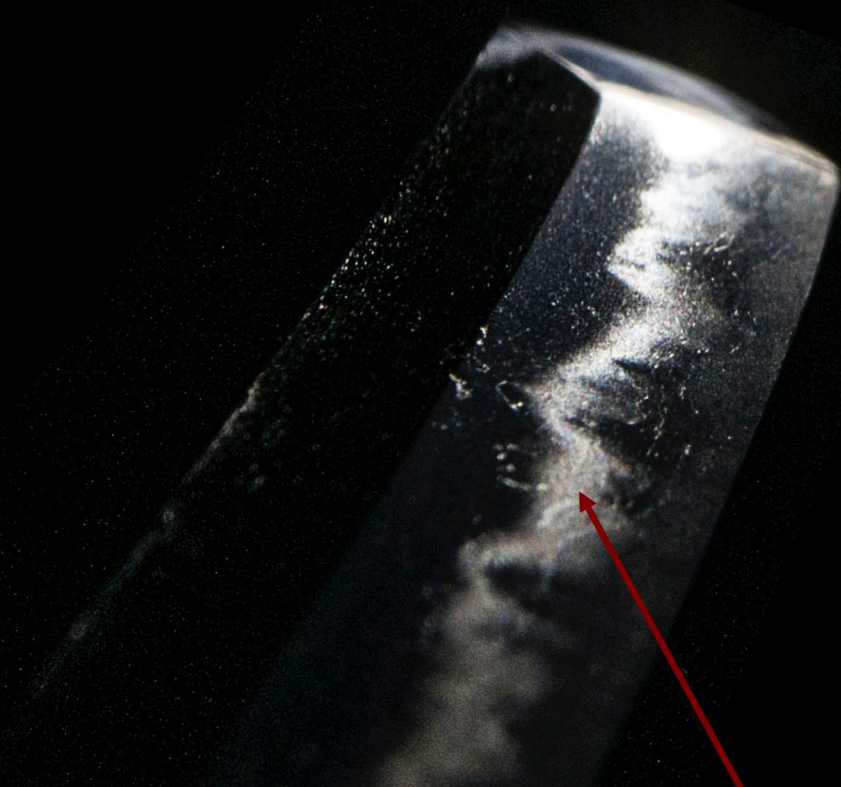
He is rightfully ranked *jô-saku*, a superior swordsmith.

The image shows two blades of a katana, likely made of tamahagane, with a prominent hamon (temper line) running down the length of each blade. The blades are set against a dark, almost black background. The hamon is a light-colored, wavy line that separates the harder, darker blade from the softer, lighter handle. Two red arrows point to specific points on the hamon: one on the upper blade pointing to a small notch or 'jaws' in the line, and another on the lower blade pointing to a similar feature. The lighting highlights the texture and grain of the metal.

The jaws of life.  
Sink your teeth into this delicious hamon.



Gorgeous and skilfully forged *mokume-hada*  
(burl grain) pattern in the body.

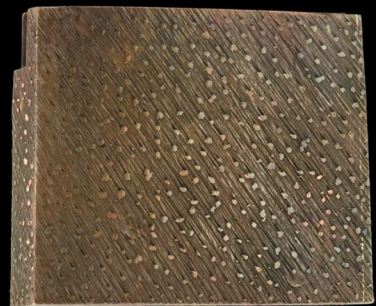


thick/wide *nioguchi*

An eye-catching *gunome-midare hamon* with a thick *nioguchi*.



*Shirasaya*  
(protective scabbard)

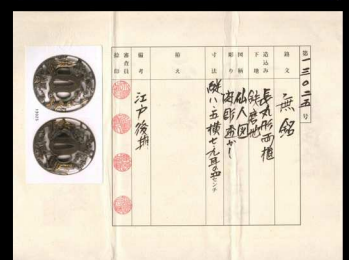
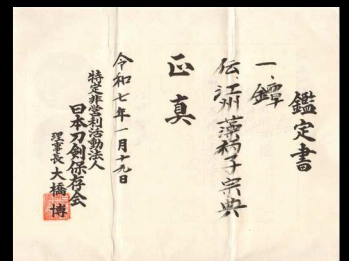


copper *habaki* with  
rainfall file marks



Behold a charming *tsuba* crafted by *Mogarashi Sôten* from *Gôshû (Ômi)* province. This is a late Edo period openwork depicting sages in contemplative thought.

*Mogarashi Sôten* was a craftsman who lived in Hikone, Ômi province in the middle Edo period. *Mogarashi* is his Buddhist name. He was the founder of *Hikone-bori*, a style of dense carving in the tradition of *Mino-bori*, and many of his works are known for motif of battle scenes and figures of Japanese and Chinese characters.





(reverse)



*Fuchi-kashira*

Motif of rats,  
a symbol of prosperity and good fortune.

This exquisitely detailed *fuchi-kashira* has been attributed to *Ishiguro Masaaki* (born *Sadakichi* in 1813).

Working in Edo (Tokyo) under the founder of the famed *Ishiguro* school, *Masatsune* himself, Masaaki's artistry flourished during the *Kaei* era (1848-1855) when his reputation as a master craftsman was firmly established.

fine *jabara-maki* braiding



Parental protection.



Three beautiful butterflies form the *menuki*, resting on this wonderful *katate-maki tsuka* (hilt).  
Three represents Japan's three-part harmony of *mind*, *body*, and *spirit*.

Given their transformative nature from caterpillars, the Japanese believe butterflies carry the souls of the living and of past ancestors. They are a symbol of joy and longevity.







*Koshirae* bag with *kikkô* (tortoise shell) pattern representing healthy & longevity.



*Dig the well before you are thirsty.*

Chinese proverb

