



ITEM# UJKA423

A NAMINOHIRA YASUYUKI KATANA

ATTRIBUTION IN GOLD LACQUER, NAMBOKUCHÔ PERIOD (1346~1368)

Swordsmith:	<i>Naminohira Yasuyuki (signed in kinpunmei by Hon'ami Kôson & monogram)</i>		
Measurements:	Length: 66.8cm (<i>o-suriage</i>)	Curvature: 1.2cm	Moto-haba: 2.96cm
Jihada:	<i>Masame-hada mixed with ayasugi-hada and nagare with deep swirling chikei</i>		
Hamon:	<i>Chû-suguha and ko-gunome in nie-deki, ko-ashi and uchinoke</i>		
Certificate #1:	NBTHK Tokubetsu Hozon (<i>Especially Worthy of Preservation</i>)		
Certificate #2-4:	NTHK-NPO Kanteishô (<i>for the tsuba, fuchi-kashira and koshirae</i>)		
Authentication:	Hon'ami Kôson (1879~1955 - <i>notable sword appraiser, author, gokaden founder</i>)		
Included:	Shirasaya, Edo Satsuma koshirae, fabric bags, stand, kit, description		

SOLD

The *Naminohira school*, situated in *Satsuma* province on the southern end of the island of *Kyûshû*, can trace its roots to the late *Heian* period (900~1184). Smiths from *Satsuma* worked exclusively for the *Satsuma clan* and adhered to a rule known as *Isshi-soden*, which meant that the secrets of their trade could only be passed down to one's son or a single student. This fine katana has been attributed to *Naminohira Yasuyuki* by the late great *Hon'ami Kôson* who was an immense figure in Japan's sword world. Its distinctive *ayasugi-hada* and bright *suguha/ko-gunome hamon* is a joy to study under the light. *Nami* is "wave" and *hira* means "flat". Together this translates to be "*calm seas*". *Naminohira* swords were, in fact, popular with the Japanese Navy given the positive omen and superb quality of workmanship. Comes with a brilliant set of antique *Satsuma-koshirae*.



Saki-kasane: 4.0mm

Moto-kasane: 5.9mm

Omosa: 770g

Kissaki: 2.56cm
Saki-haba: 1.84cm

Nakago: 20.6cm

Moto-haba: 2.91cm

Nagasa: 66.8cm

Sori: 1.20cm

Mekugi-ana: 2



The *Naminohira* school, situated in *Satsuma* province on the southern end of the island of *Kyûshû*, can trace its roots all the way back to the late *Heian* period (900~1184). Smiths from Satsuma worked exclusively for the Satsuma clan and adhered to a rule known as *Isshi-sôden*, which meant that the secrets of their trade could only be passed down to one's son or a single student.

Nami is "wave" and *hira* means "flat". Together this translates to be "*calm seas*". *Naminohira* swords were popular with the Japanese Navy given the positive omen and superb quality of workmanship.

This wide and strong katana has been attributed to *Naminohira Yasuyuki* who worked during the warring *Nambokuchô* period circa 1338~1362. His given name was *Shôhei* and was said to be the son or nephew of first generation Yasuyuki.

The sword's attribution was painted in gold lacquer on the nakago sometime in the early 1900s by late great *Honami Kôson* along with his monogram. Kôson was a distinguished author and a foremost scholar and spread knowledge of the Japanese sword to a wide audience. He coined the famous term *gokaden*, meaning the five traditions of the *kotô* period, namely: *Yamato-den*, *Yamashiro-den*, *Bizen-den*, *Sôshû-den* and *Mino den*.

The distinctive *ayasugi-hada* and bright *suguha/kogunome hamon* is an absolute joy to study under the light. This is a sword to admire its subtleties and simply take time with. Impressively carved *gomabashi* grooves add an extra dimension too.

This katana comes with a brilliant set of antique *koshirae* also from the *Satsuma* region making it a complete set so to speak. An all-around fine lot for the new or seasoned Japanese sword collector.



School: *Naminohira*

Swordsmith: *Yasuyuki* (second generation)

o-suriage-nakago (greatly shortened)

kiri-yasurime (straight file marks)

波
平
安
行

波 (Nami, no)

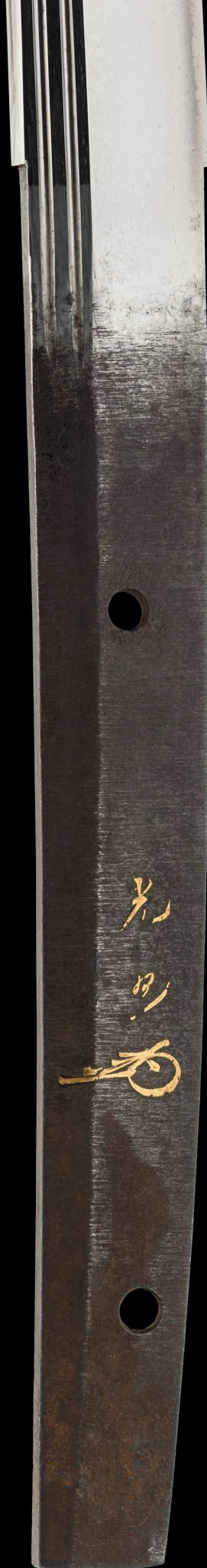
平 (hira)

安 (Yasu)

行 (yuki)

Kôson + kao
(inscribed and appraised by *Hon'ami Kôson*)
together with his monogram.

(Kô) 光
(son) 遜
(kaô) 花押



光
遜
花押



Kôson posing with the famous yari *Otegine* (御手杵)

Hon'ami Kôson's distinguished career began as a sword polisher within the notable *Hon'ami* family that for generations were the official sword appraisers and polishers of the *Tokugawa shogunate*. They also issued *origami appraisals* for blades.

Kôson published a magazine called *Nihontô Kenkyû* (刀劍研究, "Sword Studies"), and among others in 1914 and 1924 the books *Nihontô* (日本刀, "The Japanese Sword") and *Tôken Kantei Kôwa* (刀劍鑑定講話, "Lectures on Sword Appraisal") respectively.

He even founded a sword club, the *Nihontô Kenkyû Kai* (日本刀研究会). And it was *Kôson* who introduced the system of the *gokaden*. *Kôson* was instrumental in disseminating knowledge of the Japanese sword to a much wider audience.

Kôson monogram
(*kinpunmei* - gold lacquer)

30201812

No 1010699



右は當協會に於て審査の結果特別保存刀剣と
鑑定しこれを証する

平成三十一年 二月二十五日

公益財団法人日本美術刀剣保存協會



一刀 (金粉銘)

波平安行 (時代南北朝)
光遜 (花押)

長 二又二寸〇半

鑑定書

福岡県 教育委員会
第 44605 号
昭和39年8月24日

NBTHK Tokubetsu Hozon Certificate of Designation

A sword designated as *Especially Worthy of Conservation*
by the Society for the Preservation of the Japan Art Sword

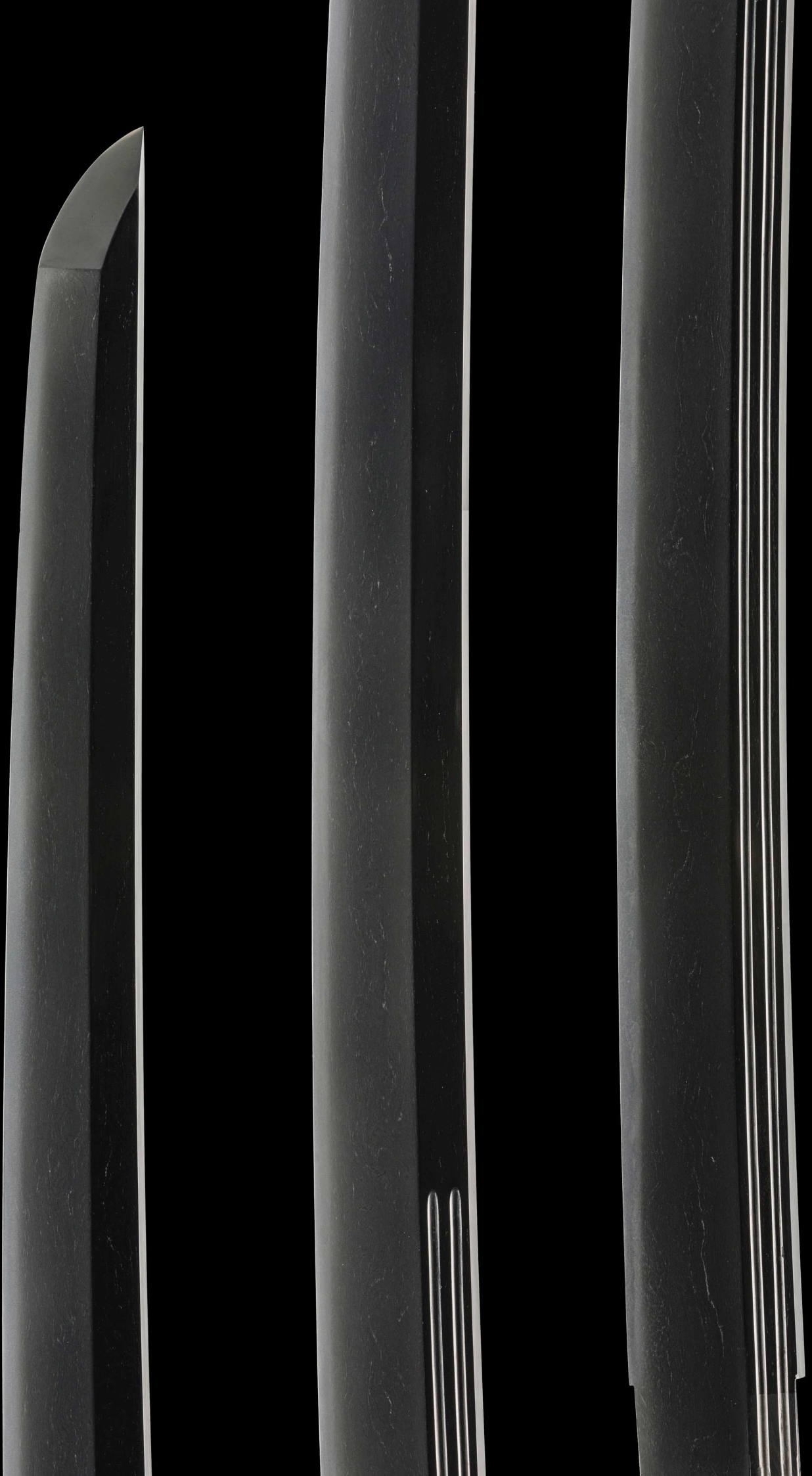
Issued in the 31st year of Heisei (2019), February 25th

One, Katana

Kinpunmei (gold inscription)
Naminohira Yasuyuki (Jidai Nanbokuchô)
Kôson (kaô)

Nagasa (length)
2-shaku 2-sun 0 han (66.8cm)

Nihon Bijutsu Token Hozon Kyokai
(NBTHK)





Goma (or "Homa" in Sanskrit) means "to burn".
Hashi means "chopsticks".

These double narrow short grooves with the same length and rounded top are symbolic of chopsticks used during *Goma* - a deeply spiritual Buddhist ceremony.

The officiating priest, who has performed the self-purification rites for both his mind and body, burns the *goma* wood in the center of the fireplace of the *goma* platform, which is in front of the principal holy image of *kôbo daishi*.



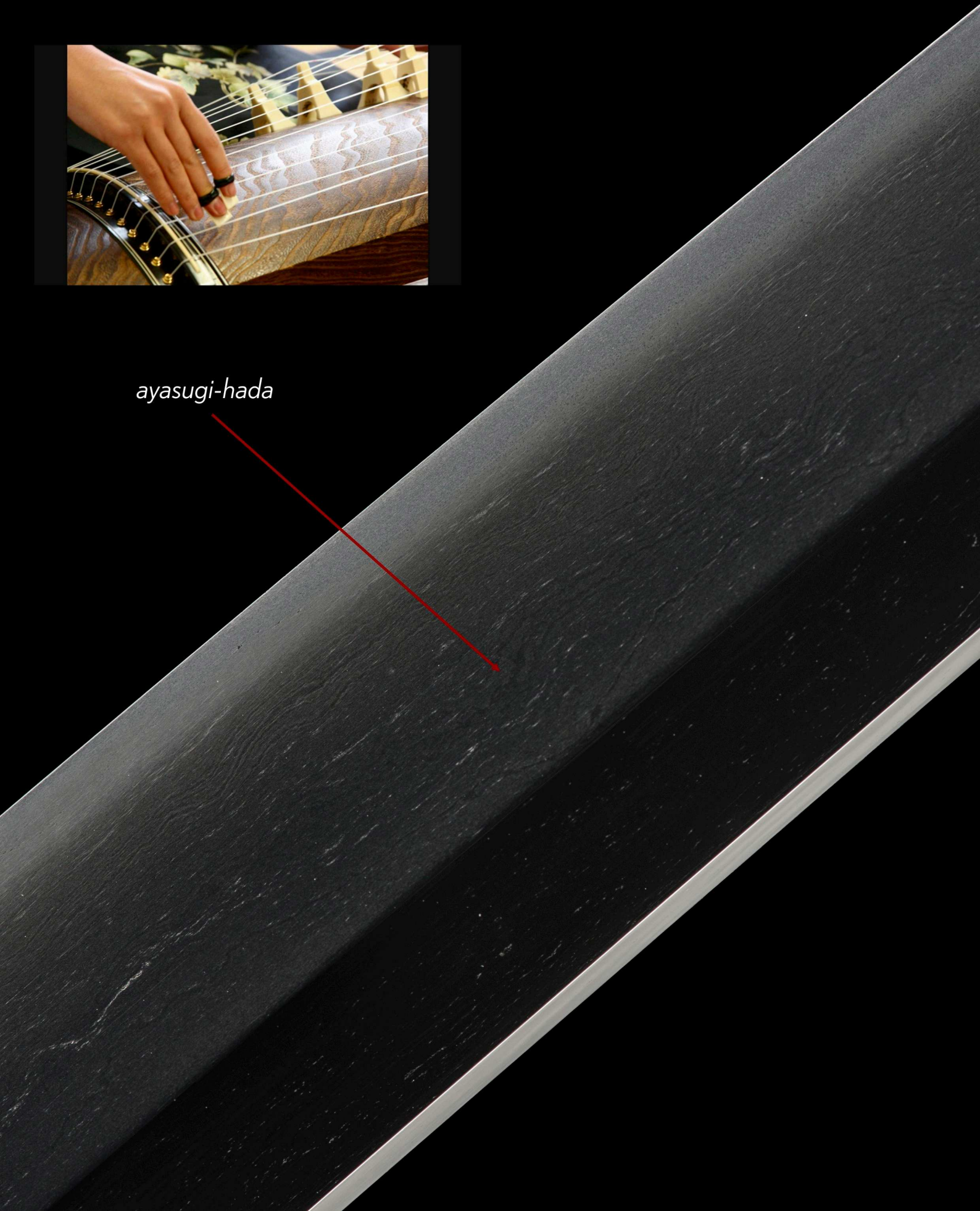
gomabashi - pair of parallel grooves running partway up the blade resembling chopsticks used for the spiritual Buddhist *goma* fire ritual.



Masame-hada (straight grain) that is somewhat compressed forms *ayasugi-hada* - named after the special wavy carving pattern on certain *koto* or *shamisen* music instruments that enhances its resonance.



ayasugi-hada





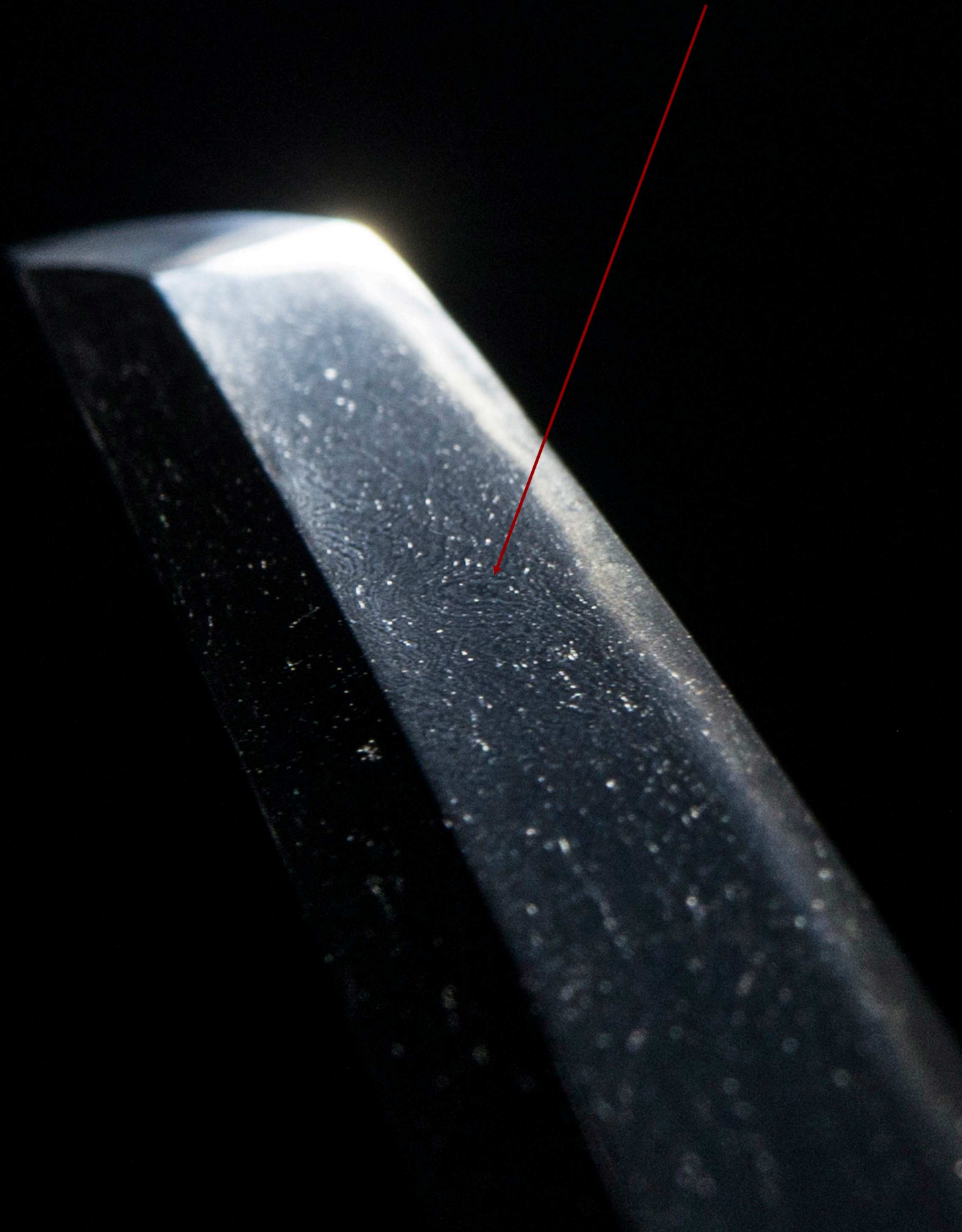
These small crescent moons that appear above the *hamon* are called *uchinoke*.

Uchinoke is a rare *hataraki* (activity) that is generally found on swords from the Ko-Naminohira school, the *Rai family*, *Yamashiro Sanjo* and *Yamato Tegai* schools.

uchinoke

The winding folds of the steel appear to form a fingerprint in this one area of the sword.

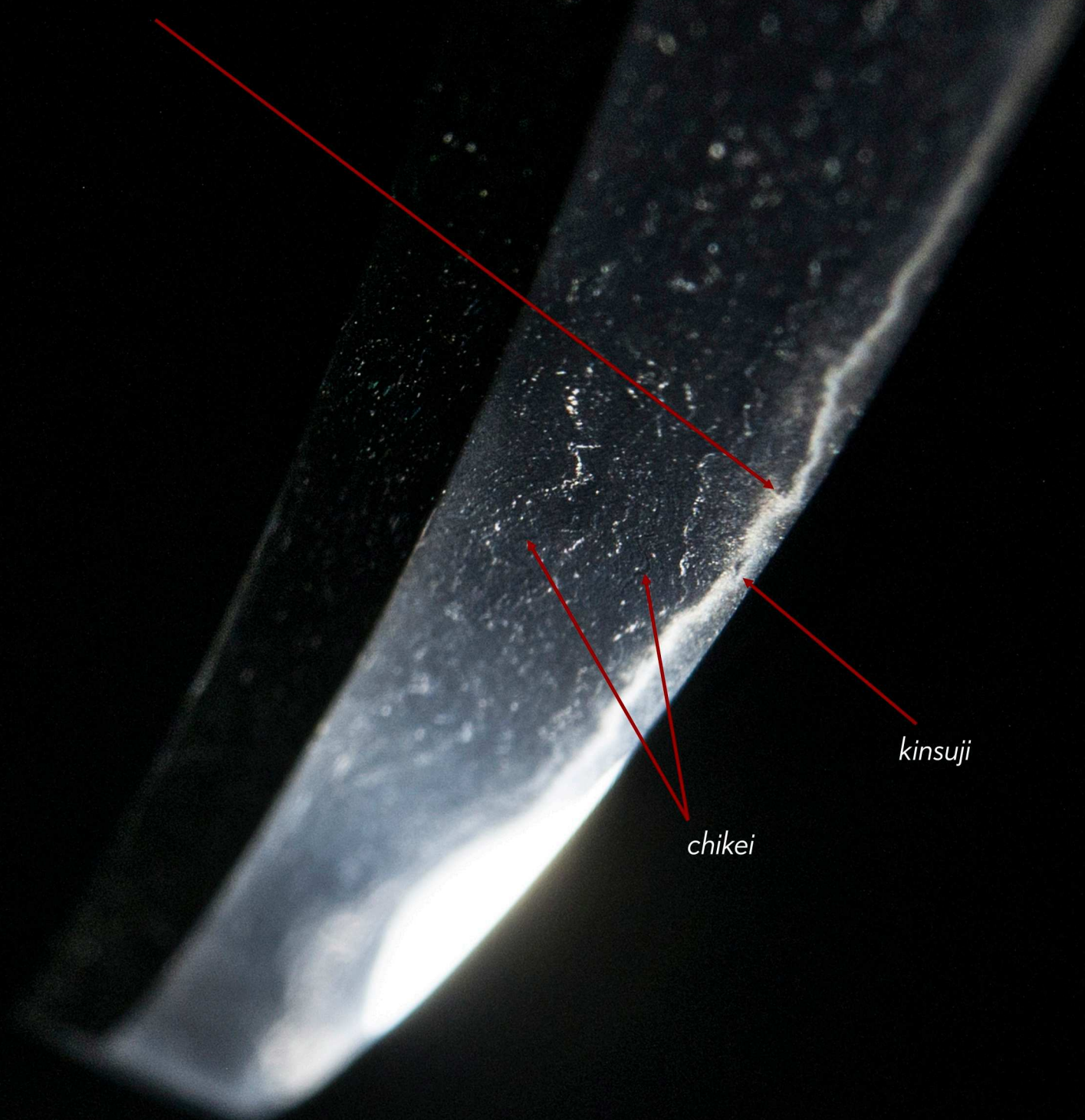
This is the magic of Japanese swords.





A good view of the tiny *nezumi-ashi* (rat's legs) that extend from the hamon to the cutting edge, a strong feature of the Naminohira school.

The *suguha* hamon flows like the sea forming a unique swell pattern here.



kinsuji

chikei

Dark lines of nie crystals found in the body (*chikei*) and in the *hamon* line (*kinsuji*). In a sword like this, subtle details carry big impact.



Shirasaya
(protective scabbard)

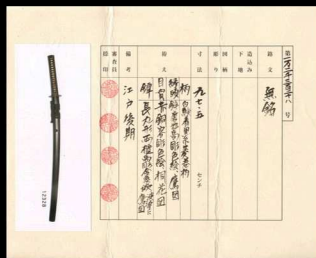


silver *habaki* with
diamond design file marks


*Kuro-ishime-ji nuri saya
satsuma-gatana-koshirae*
(黒石目地塗鞘薩摩刀拵)

*Satsuma-gatana-koshirae
lacquered in black with
stone-surface texture*

Crafted during the
Late Edo period
(1780~1867)



NTHK-NPO Kanteisho
Certificate of Authenticity

A close-up photograph of a sword scabbard (koshirae) against a black background. The scabbard is dark and cylindrical. A small, circular hole, known as a kaeri-tsuno, is visible on the upper part of the scabbard. A red arrow points from the text below to this hole. Below the hole, there is a section of the scabbard wrapped in a light-colored, textured fabric, secured with several horizontal bands. The lower part of the scabbard shows the hilt (tsuba) and the beginning of the blade, which is wrapped in a dark, textured material with gold-colored accents.

This unique *kaeri-tsuno* is a feature of *Satsuma-koshirae*. It is designed so that the scabbard can only be drawn with a strong pull. A reminder not to be too hasty in drawing your sword.

All told, this is a battle ready koshirae. Nothing too fancy - austere in nature.

Let the games begin.



This polished iron tsuba has been attributed to *Ishiguro Koretsune* of the *Edo Ishiguro school* from the Late Edo period.

Its hawk/wave theme is a matching set to the *fuchi-kashira*.



On the attack.



Wonderfully aged silk, carries a waxy texture to be appreciated.



waves paying tribute to the Naminohira school.



Shakudô menuki are designed in paulownia flowers. Known as the 'Tree of Life', the royal paulownia has a traditional significance in Japan and China, where it is most often planted. During the newborn birth of a child or daughter, a family would plant the Tree of Life in honour of the birth. Once the daughter or child grew and married, the tree would be cut down to make a special chest for the home.



hawk



Vintage koshirae fabric bag
with *sensu* (Japanese fans).

A complimentary sword maintenance kit with *mekugi-nuki* and a bottle of *Fujishiro* sword oil (trusted by the Japanese sword museum) is included with all sword purchases.



safe, extra large cloth for adding oil to the blade