



Saki-kasane: 3.5mm

Moto-kasane: 5.5mm

Omosa: 630g

Kissaki: 2.62cm

Saki-haba: 1.73cm

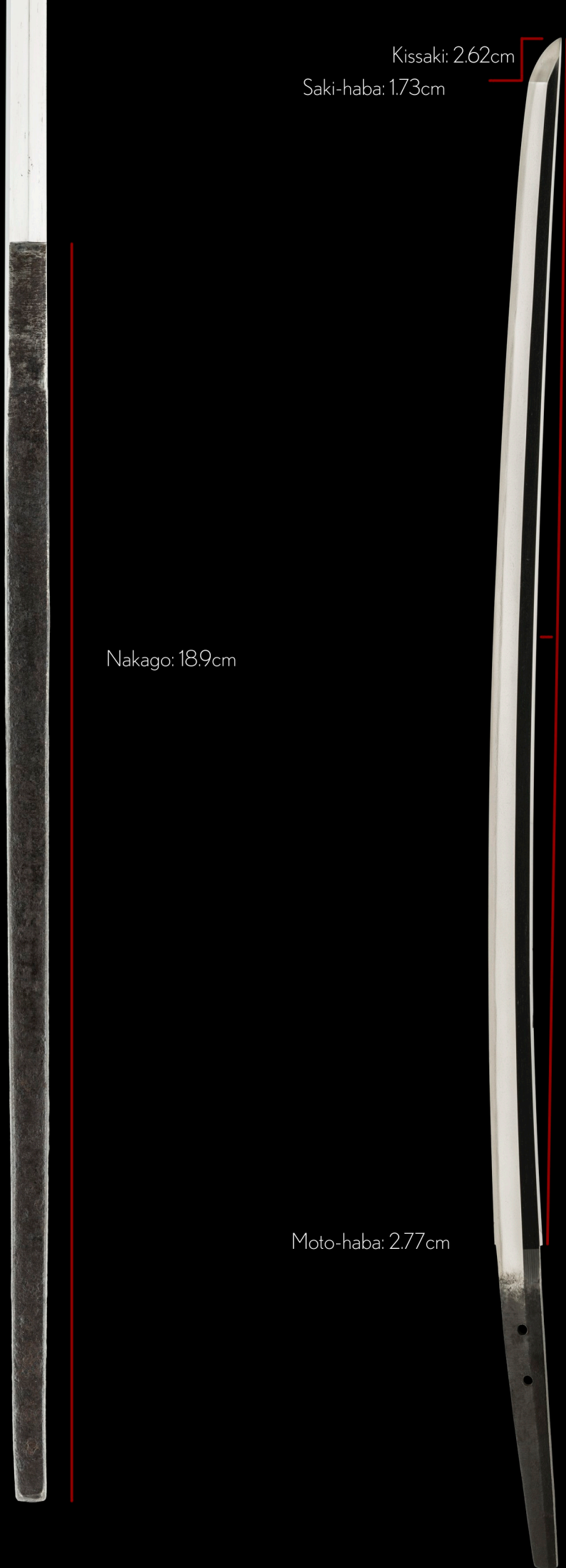
Nakago: 18.9cm

Moto-haba: 2.77cm

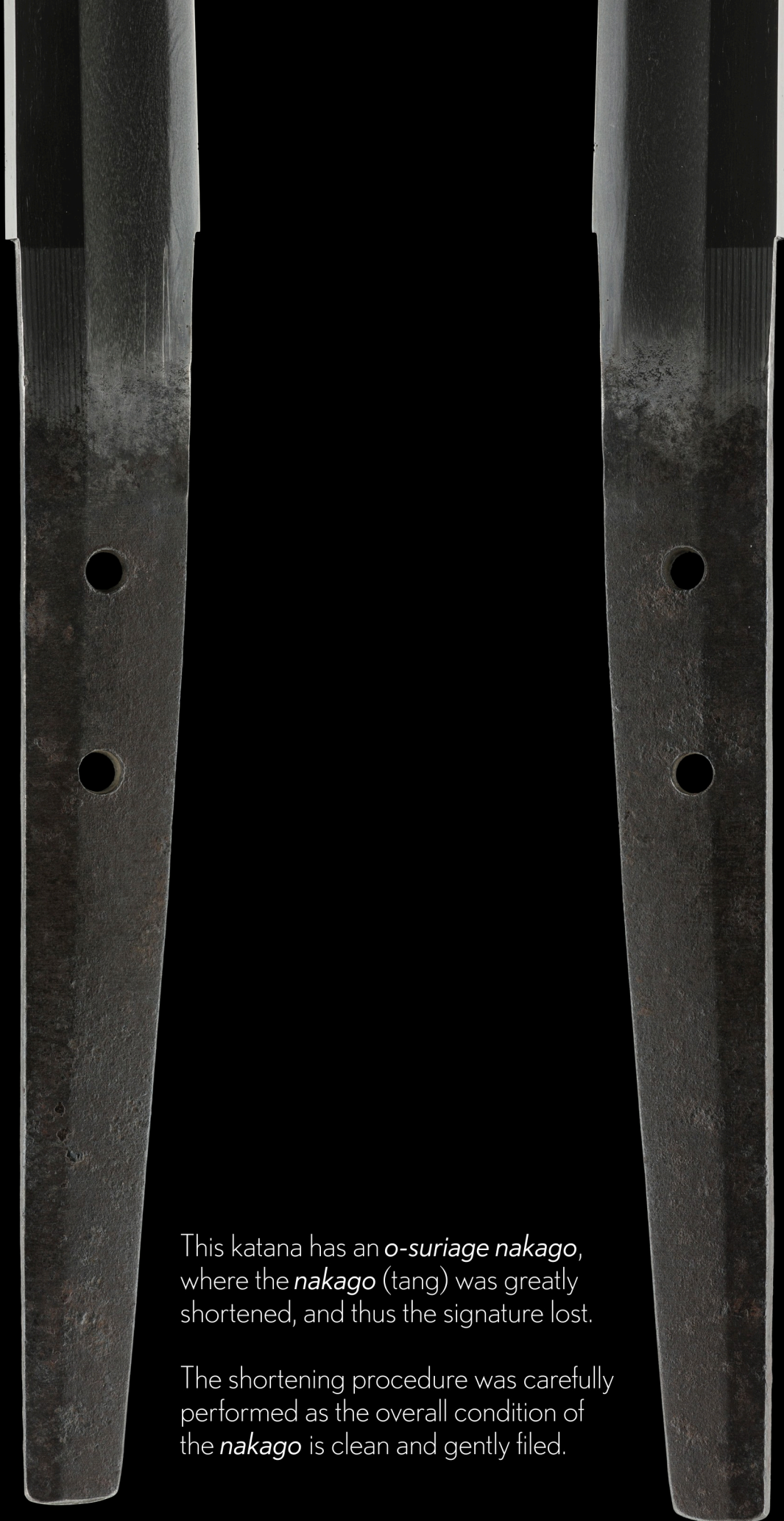
Nagasa: 70.6cm

Sori: 11cm

Mekugi-ana: 2





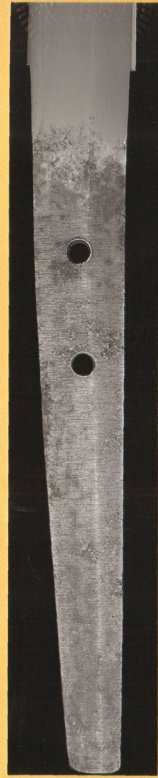


This katana has an *o-suriage nakago*, where the *nakago* (tang) was greatly shortened, and thus the signature lost.

The shortening procedure was carefully performed as the overall condition of the *nakago* is clean and gently filed.

30201805

No 1009614



鑑定書

一刀  
無銘(手替清時代南北朝末期乃至応永)

長二又三寸三分

右は當協會に於て審査の結果特別保存刀剣と  
鑑定しこれを証する

平成三十年八月二十日

公益財団法人日本美術刀剣保存協會



兵庫県教育委員会  
第 5491 号  
昭和26年8月25日

## NBTHK Tokubetsu Hozon Certificate of Designation

A sword designated as *Especially Worthy of Conservation*  
by the Society for the Preservation of the Japan Art Sword

Issued in the 30th year of Heisei (2018), August 20th

One, Katana

*Mumei* (unsigned)  
*Tegai Kanekiyo*  
*Jidai Nambokuchô makki naishi Ôei*

*Nagasa* (length)  
2-shaku 3-sun 3-bu (70.6cm)

Nihon Bijutsu Token Hozon Kyokai  
(NBTHK)



*Shirasaya*  
(protective scabbard)



gold *habaki* with  
straight file marks



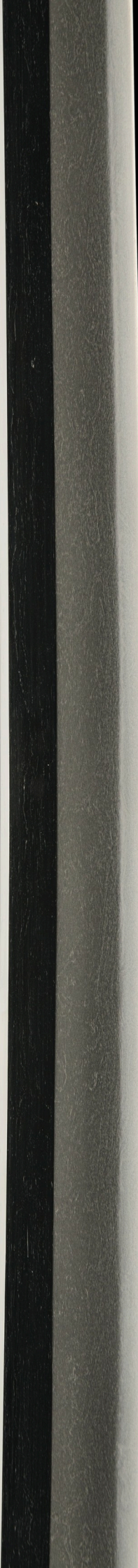
刀 (Katana)

無 (mu)

銘 (mei)

+ monogram





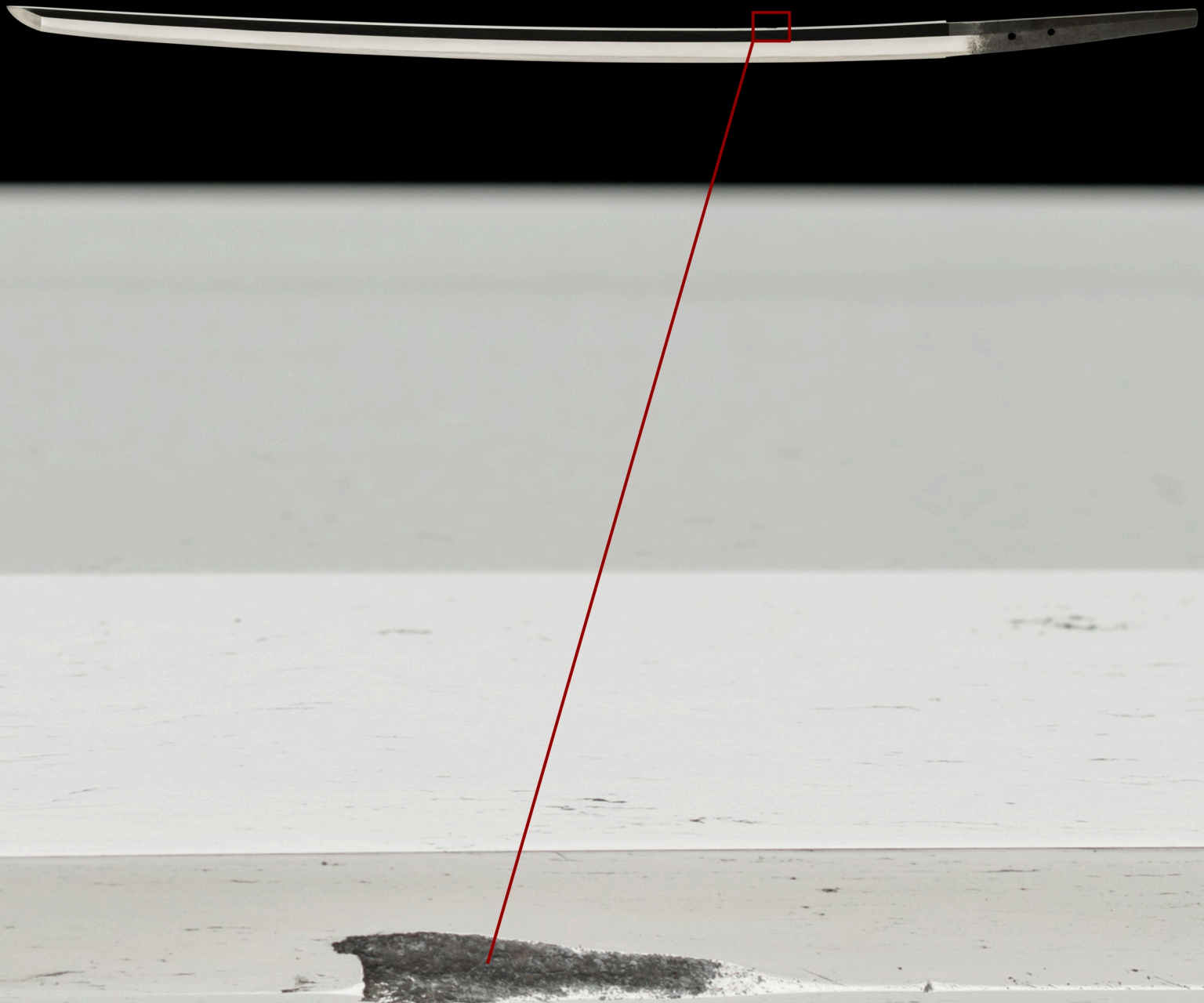
This katana is extremely well forged.  
Note the dark swirly lines of *chikei* in  
the body of the sword.

Pure *Koto-period* talent.



*Kirokomi* - this a monumental battle scar from another sword when defending in combat. It is located on the *mune* (spine) of the sword, towards the bottom of the blade.

These prized marks of courage are intentionally left by sword polishers - never to be repaired. Their significance cannot be overemphasized.



The steel has a wetness to it.  
A sign of a seriously sharp sword.



A close-up, diagonal view of a katana blade against a black background. The blade's surface is highly reflective, showing a bright, curved hamon. The hamon features a series of small, crescent-shaped marks (uchinoke) and fine, parallel lines (kinsuji). A bright, smooth section of the hamon is labeled as suguha hamon. Red lines point from text labels to these specific features on the blade.

*lines of kinsuji*

*bright suguha hamon*

Rarely seen *uchinoke* in the shape of small *crescent moons* on the *hamon*.

The Yamato tradition dates back the furthest in the history of Japanese swords. They represent quality, a refined elegance that is captured within this katana.

Notice the clean, bright *suguha hamon* with lines of *kinsuji* and rare *uchinoke* almost painted on with perfection. 600 years of history in your hands.

(mu) 無

(mei) 銘

(katana) 刀

