



ITEM# UJKA375

SOLD

A KUNISADA 'TAMESHIGIRI' KATANA SIGNED, MIDDLE EDO PERIOD (HÔEI ERA: 1704~1711)

Swordsmith: *Kunisada (ubu nakago)*
Measurements: **Length:** 74.5cm **Curvature:** 1.0cm **Motohaba:** 2.72cm
Jihada: *Mixed itame-hada and mokume-hada with chikei*
Hamon: *Thick notare-ba in nie-deki with kinsuji, sunagashi thick clawing ashi*
Certificate 1: **NBTHK Hozon** (*sword and fk are Especially Worthy of Preservation*)
Certificate 2-4: **NTHK-NPO Kanteisho** (*a koshirae, tsuba and fk designated as Authentic*)
Included: Shirasaya, Edo koshirae, stand, kit, DVD, booklet, printed description

SOLD

Swordsmith *Kunisada* was active during the mid-Edo period circa the *Hôei* era (1704~1711) and worked in *Musashi* province, the nation's capital. Few swords exist by *Kunisada* who is said to hail from *Nakamura* city in *Ôshû* province. His known signatures were *Ôshû Uda-gun Nakamura jû Kunisada* or simply his name *Kunisada*.

This long, powerful katana underwent a *tameshigiri* (cutting test) having successfully severed through two stacked bodies in one sweeping stroke. Chiseled into the *ura* (reverse side) of the nakago, the test was performed by *Murakami Hikozaemon* at *Nijûhachiyama*, translated literally as 'Mount Twenty-eight.' Inspired by the location of the test, a thoughtful, antique Edo period koshirae with a serene mountainous landscape theme remains faithful to the sword. This is a rare katana that holds a serious, contemplative presence.



Saki-kasane: 4.1mm

Kissaki: 3.20cm

Saki-haba: 2.00cm

Moto-kasane: 6.6mm

Nagasa: 74.5cm

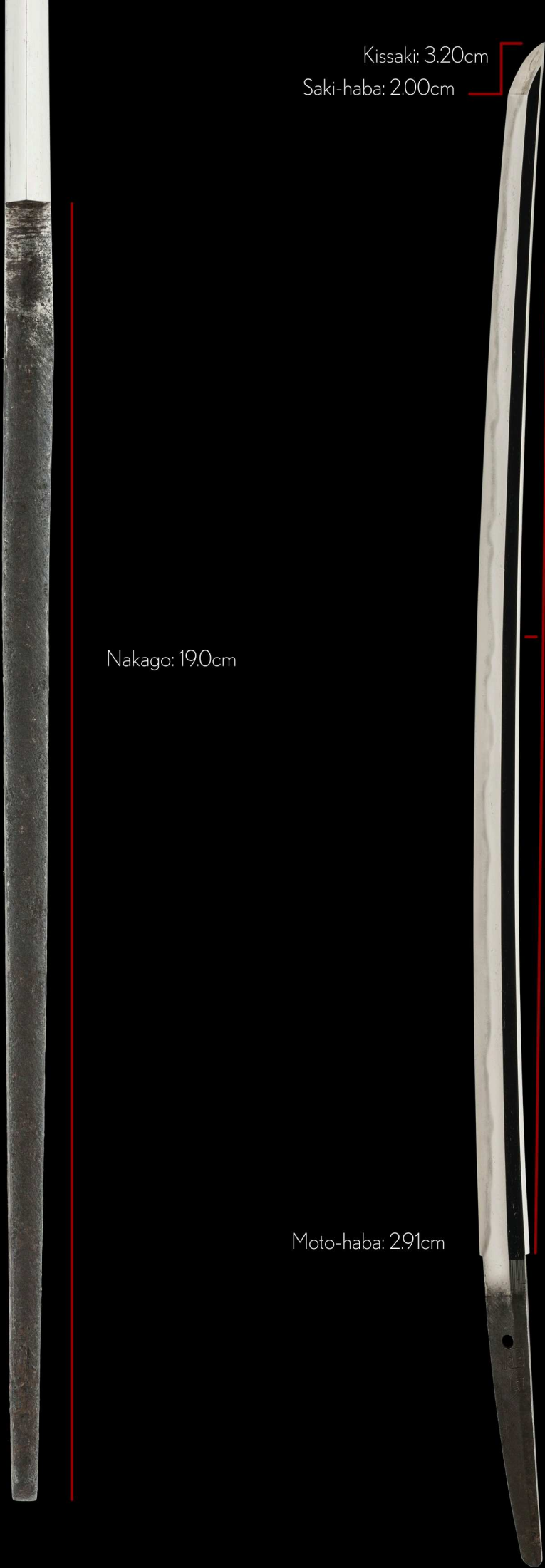
Nakago: 19.0cm

Sori: 1.0cm

Omosa: 740g

Moto-haba: 2.91cm

Mekugi-ana: 1



Swordsmith *Kunisada* was active during the mid-Edo period circa the *Hôei era* (1704~1711) and worked in *Musashi* province, the nation's capital.

Few swords exist by Kunisada who is said to hail from *Nakamura* city in *Ôshû* province.

His known signatures were *Ôshû Uda-gun Nakamura jû Kunisada* or simply his name *Kunisada*.

This long, powerful katana underwent a *tameshigiri* (cutting test) having successfully severed through two stacked bodies in one sweeping stroke.

The test was performed by *Murakami Hikozaemon* at *Nijûhachiyama*, translated literally as 'Mount Twenty-eight.'

Inspired by the location of the test, a thoughtful Edo period koshirae with a serene mountainous landscape theme remains faithful to the sword.

This a rare katana that holds a serious presence.



Location: *Musashi*
Swordsmith: *Kunisada*

ubu-nakago (original, unaltered tang)
sujikai-yasurime (diagonal file marks)

国 (Kuni)

貞 (sada)

Ha agari kurijiri

Chestnut shape *nakago-jiri* with the cutting edge side slanting more steeply.

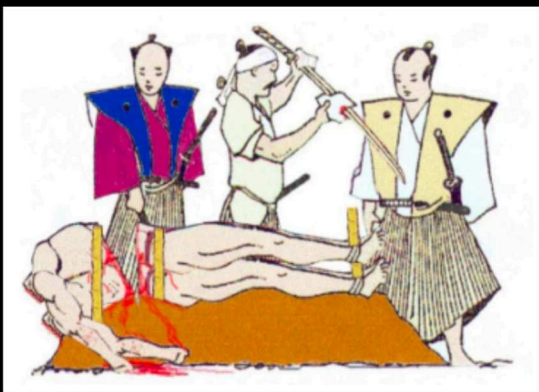
Ryôdô

Murakami Hikozaemon nijûhachiuama ni kore o utsu

[With this katana] *Murakami Hikozaemon* severed through two bodies [in one stroke] at *Mt. Nijûhachi*



before



after

(Mura) 村
(kami) 上
(Hiko) 彦
(za) 左
(e) 右
(mon) 門
(Nijû) 廿
(hachi) 八
(yama) 山
(ni) 二
(utsu) 打
(kore o) 之



両 (Ryô)
洞 (dô)

保 存
01201909

№ 3022248



公益財団法人日本美術刀剣保存協会



令和元年十二月二日

鑑定しこれを証する
右は當協會に於て審査の結果保存刀剣と

一、刀銘 国貞（武蔵・新刀）

（切付銘）

両胴

村上彦左衛門共八山二打之
長二尺四寸六分

鑑定書

東京都 教育委員会
第 264325 号
平成5年6月15日

NBTHK Hozon Certificate of Designation

A sword designated as *Worthy of Conservation*
by the Society for the Preservation of the Japan Art Sword

Issued in the 1st year of Reiwa (2019), December 2nd

One, *Katana*

Mei (signature)

Kunisada (*Musashi Shintô*)

(*Kiritsukemei*)

Murakami Hikozaemon nijûhachiyama ni kore o utsu

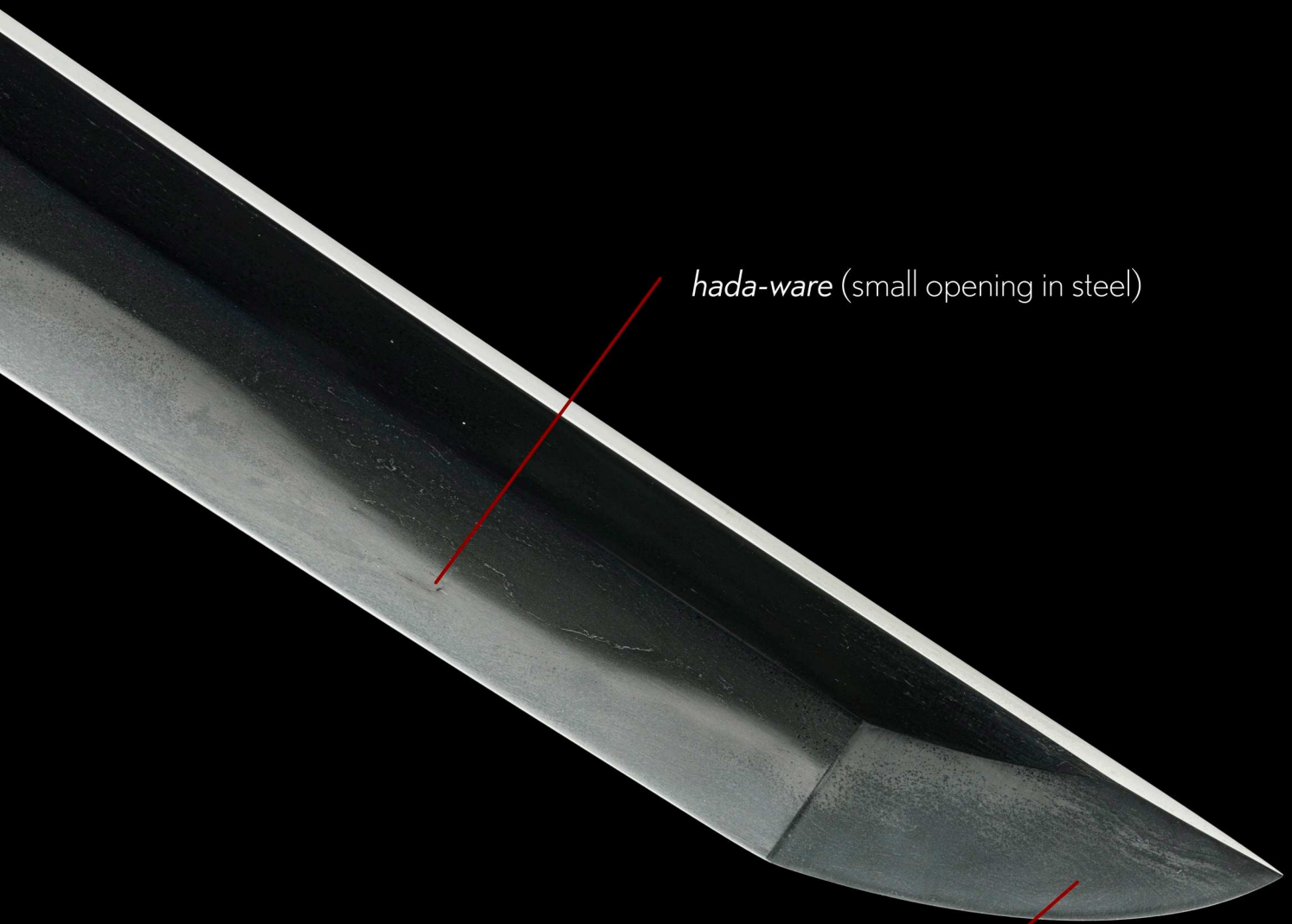
Nagasa (length)

2-shaku 4-sun 6-bu (74.5cm)

Nihon Bijutsu Token Hozon Kyokai
(NBTHK)




a close-up of the *boshi*



hada-ware (small opening in steel)

Fantastic concentrations of *nie crystals* inside the *boshi* form unique fingerprint-like patterns.



A close-up, diagonal view of a sword blade against a black background. The blade's surface is dark and shows various textures. A wavy line of lighter, crystalline material (hamon) runs along the length of the blade. Below this, there are areas with a burl grain pattern (itame and mokume-hada). At the bottom, a distinct white line indicates the inner core steel (shingane). Red lines connect the text labels to these specific features on the blade.

a gentle *notare* (wave) *hamon* in *nie-deki*
(visible crystals)

mixture of *itame* and *mokume-hada*
(oval and rounded burl grain pattern)

This sword has been polished a few
times over its life and shows some
areas of *shingane* (inner core steel).

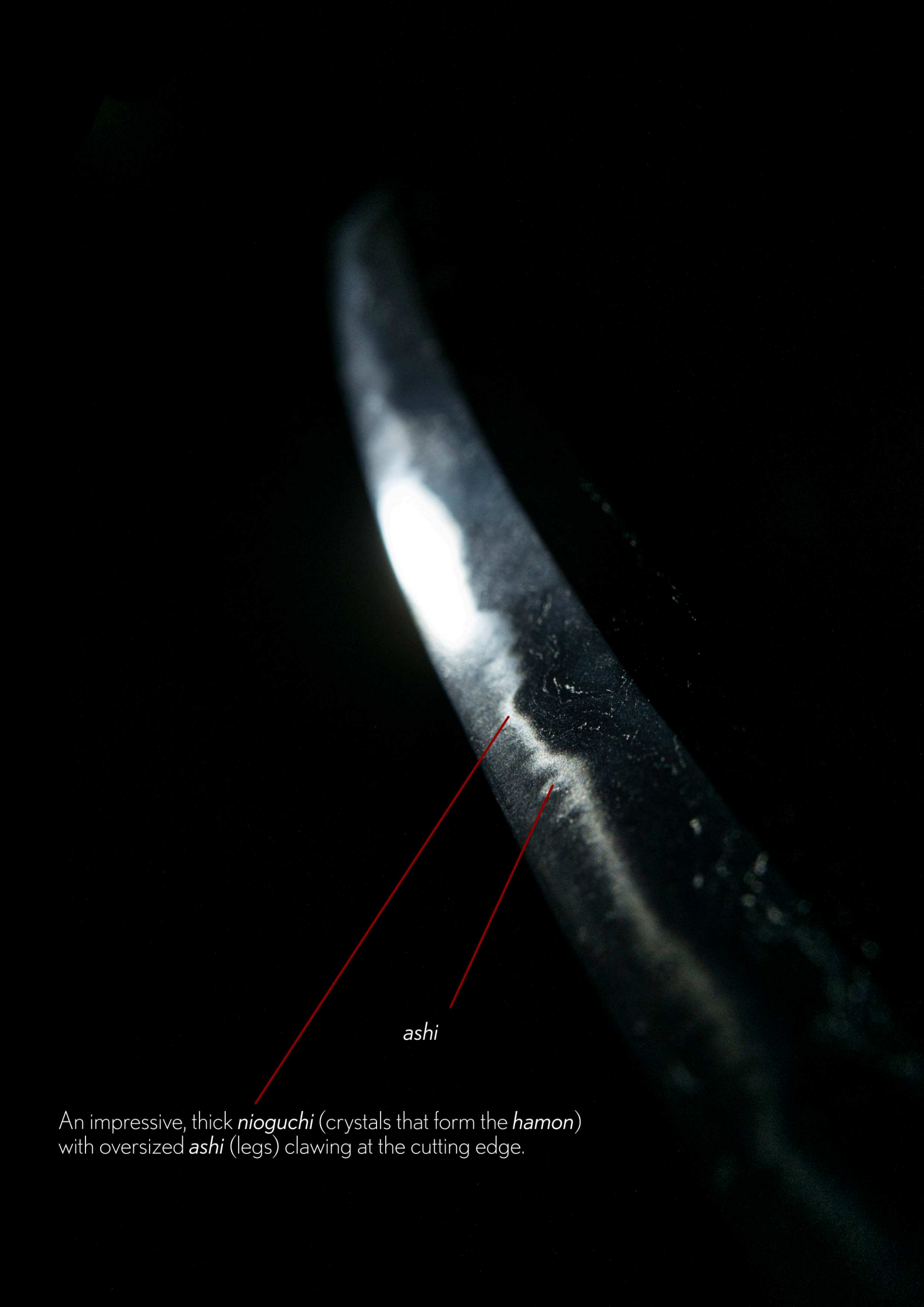
The *hamon* has a mysterious quality, unlike most swords from the early to middle Edo period.

It encapsulates the powerful presence of the sword.



sunagashi (sweeping formation)

kinsuji (dark lines in the hamon)



ashi

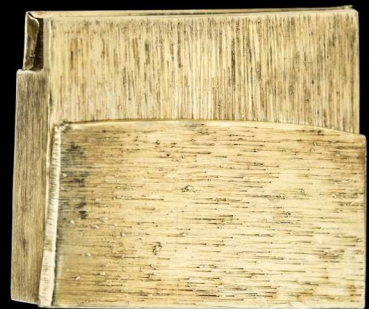
An impressive, thick *nioguchi* (crystals that form the *hamon*) with oversized *ashi* (legs) clawing at the cutting edge.

A mountain formation brings figurative unity to the location of the cutting test and the theme of the iron fittings.





Shirasaya
(protective scabbard)

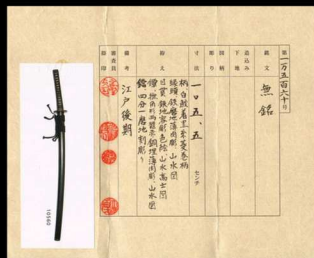


gold-wrapped *habaki*
with straight file marks

*Kuro-ishime-ji-nuri saya
uchigatana-koshirae*
(黒石目地塗鞘打刀拵え)

*Uchigatana-koshirae
lacquered in black with unique
stone-surface textured saya*

Crafted during the
Late Edo period
(1780~1867)



NTHK-NPO Kanteisho
Certificate of Authenticity

kojiri (end cap)



The *saya* (scabbard) has a reinforced *kojiri* (end cap) with a faded gold inlay *kumo-raimon* (thunder and cloud) design.

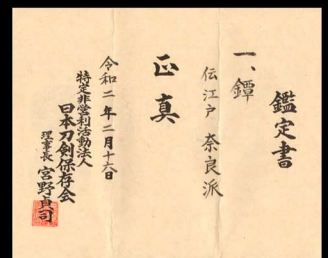


This polished iron *tsuba* with a serene setting of a rocky landscape features birds flying high above a person (priest) praying on a bridge, with temples, *matsu* (pine) trees, mountains and clouds in the background.

It was produced by a metalsmith from the *Nara school* during the Mid-Edo period, circa 1700~1780.

As the cutting test was performed at *Mt. Nijuhachi*, a rather serious scene such as the one artfully captured on this *tsuba* was likely to have been experienced.

A Kanteisho certificate of authenticity from the NTHK-NPO has been awarded to the *tsuba*.



(reverse)



As these holes were not needed to pass through a *kôzuka* or *kôgai*, a previous samurai owner (with financial means) decided to fill them in with *shakudô*.

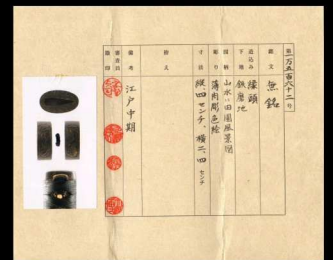
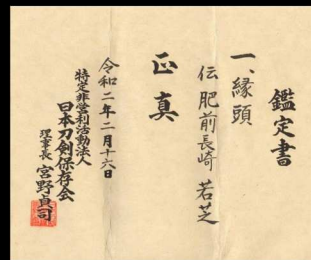
Shakudô literally means '*red copper*'. It is an alloy of gold and copper, with the gold content varying between 3% and 5%. As it has a beautiful contrasting effect with gold, it was a widely used and prized raw material for sword fittings.

It's a subtle, yet significant touch to be appreciative of.



The contemplative mountainous landscape scene is further carved into the iron *fuchi-kashira* that has been attributed to the *Jakushi* school from *Nagasaki* in *Hizen* province.

This fuchi-kashira was also made during the middle Edo period (1700-1780) and is certified with NTHK-NPO Kanteisho.



iron *menuki* of a landscape scene





Brocade koshirae bag



Flying into Japan?

If you are travelling to Tokyo and are serious about acquiring an authentic Japanese sword, be sure to book a **private meeting** with us in advance.

Many swords from Unique Japan are sold privately every year to proud clients around the world. Contact service@uniquejapan.com where we'll discuss the type of sword, age and other special qualities you are seeking along with budget parameters.

Meetings are held at our studio near JR Ebisu station - only minutes away from all major hotels in downtown Tokyo.



A Ko-Ichimonji Suke[yasu] Tachi

Early Kamakura period
circa (1184~1222)

nagasa: 69.0cm
sori: 2.4cm

62nd NBTHK Jûyô Tôken
October 18, 2016