



ujka369

*A Shodai Nagamichi Katana  
with 2-body Tameshigiri cutting test*

Kanbun era: 1661~1673

Length: 71.0cm



Saki-kasane: 4.4mm  
Moto-kasane: 6.6mm

Kissaki: 2.97cm  
Saki-haba: 2.03cm

Nagasa: 71.0cm

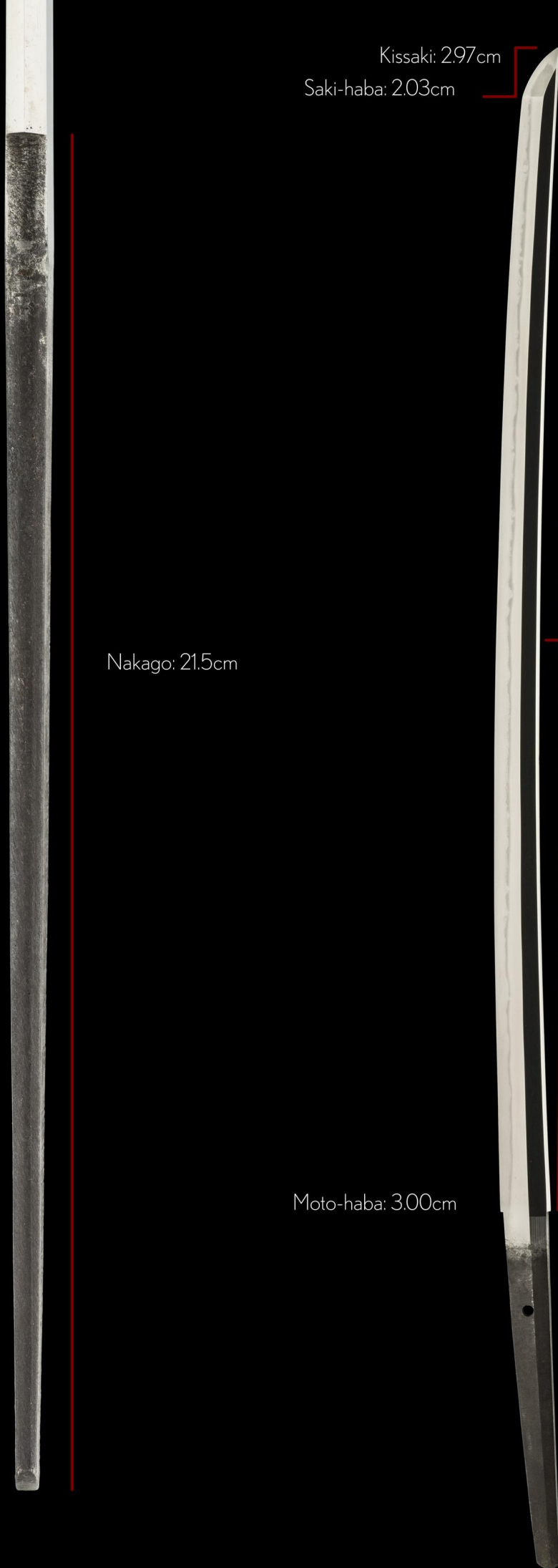
Nakago: 21.5cm

Sori: 0.9cm

Omosa: 795g

Moto-haba: 3.00cm

Mekugi-ana: 1



*Miyoshi Nagamichi* was born *Miyoshi Toshiro* in *Iwashiro province*, modern-day Fukushima.

His father *Masanaga* was retained by *Daimyo Lord Kato Yoshiaki*. He originally signed his name as *Michinaga*, changed to *Nagamichi* in 1659 when he received his title of *Mutsu Daijo*.

Nagamichi is ranked *saijo-owazamono*, a grandmaster in producing swords that are extremely sharp.

This is a sharp katana with a gorgeous late Edo period koshirae to cherish by one of the greats of the 17th century.





Location: *Mutsu, Aizu* (resident of Fukushima)

Family name: *Miyoshi*

Swordsmith: *Nagamichi* (first generation)

*ubu-nakago* (original, unaltered tang)

*kiri-yasurime* (straight file marks)

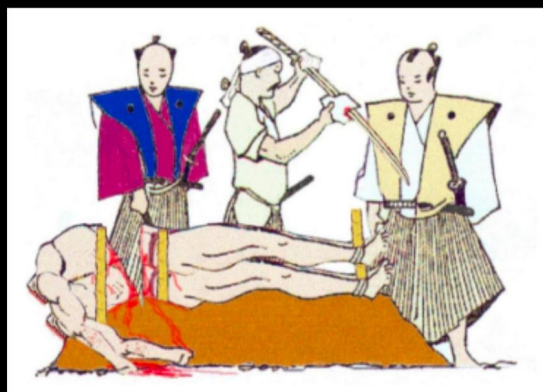
(reverse)

*Kanpô ninen Minunoe-inu nigatsu nijûninichi  
futatsu-dô setsudan. Aiyô-shi Makita  
Gorôzaemon Shigezane kore o tamesu*

On February 22nd in the year of the dog of  
1742, this katana severed through two bodies  
in one stroke by Aizu retainer *Makita  
Gorôza'emon Shigezane*.



*before*



*after*

(Ai) 會  
(yô) 陽  
(shi) 士  
(Maki) 牧  
(ta) 田  
(Go) 五  
(rô) 郎  
(za) 左  
(e) 衛  
(mon) 門  
(Shige) 重  
(zane) 実  
(tamesu) 試  
(kore o) 之

寬 (Kan)  
保 (pô)  
二 (ni)  
年 (nen)  
戌壬(Mizunoe-inu)  
二(ni)  
月 (gatsu)  
廿 (nijû)  
二 (ni)  
日 (nichi)  
式 (futa)  
ッ (tsu)  
胴 (dô)  
切 (setsu)  
斷 (dan)



## 鑑定書

長三尺三寸四分

一刃

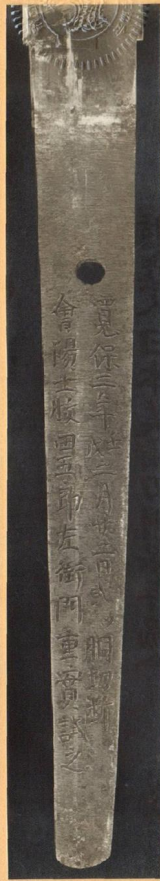
無銘

(三善長道)

寛保二年壬辰二月二十日式目胴切斷  
会場土牧田五郎左衛門重定試之右は當協會に於て審査の結果保存刀剣と  
鑑定しこれを証する

平成元年八月三日

財団法人日本美術刀剣保存協會

NBTHK Hozon  
Certificate of DesignationA sword designated as *Worthy of Conservation*  
by the Society for the Preservation of the Japan Art Sword

Issued in the 1st year of Heisei (1989), August 3rd

One, Katana

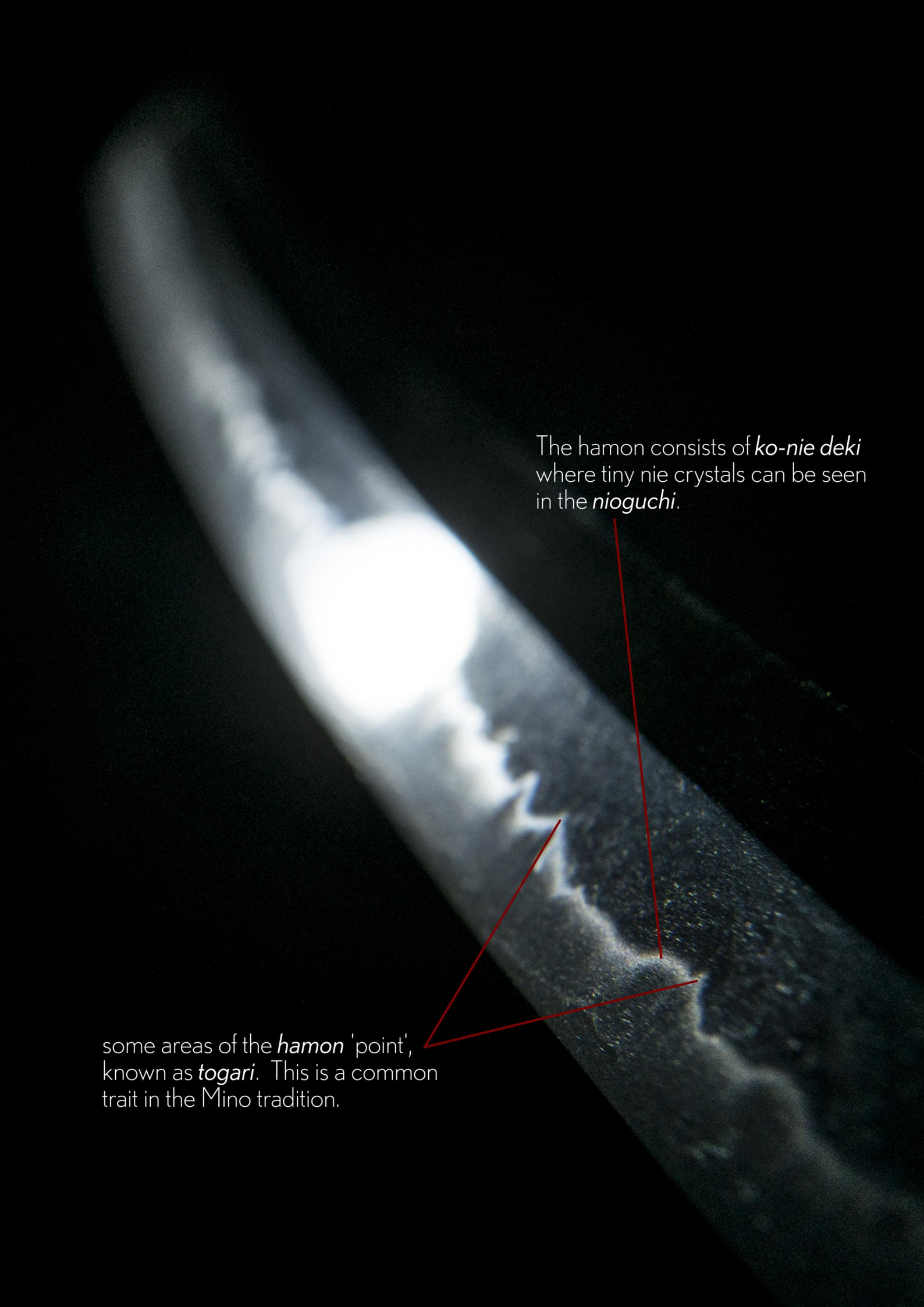
*Mumei* (unsigned)*Miyoshi Nagamichi**Kanpô ninen Mizunoe-inu nigatsu nijûninichi futatsu-dô setsudan  
Kaiyôshi Makita Gorôza'emon Shigezane kore o tamesu**Nagasa* (length)

2-shaku 3-sun 4-bu (71.0cm)

Nihon Bijutsu Token Hozon Kyokai  
(NBTHK)



A classic *gunome-midare hamon* that shows excellent brightness and overall consistency.

A close-up photograph of a sword's edge, showing the hamon (tempered edge) with a bright, glowing line. The background is dark. Two red lines point from text annotations to specific features on the hamon. One line points to a jagged, 'pointed' section of the hamon, and another points to a section with a fine, granular texture.

The hamon consists of *ko-nie deki* where tiny nie crystals can be seen in the *nioguchi*.

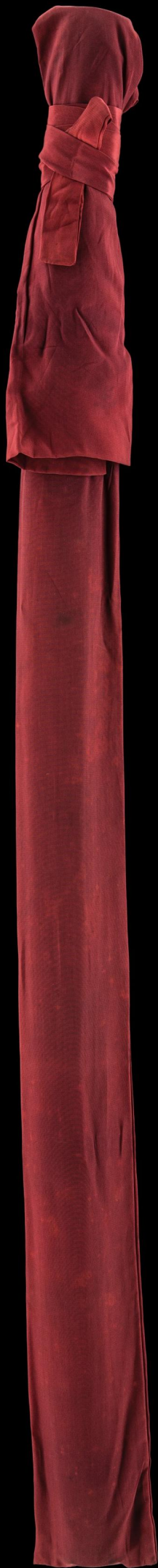
some areas of the *hamon* 'point', known as *togari*. This is a common trait in the Mino tradition.

The *hamon* delights us with a pattern of *kanitsume* or "crab claws".

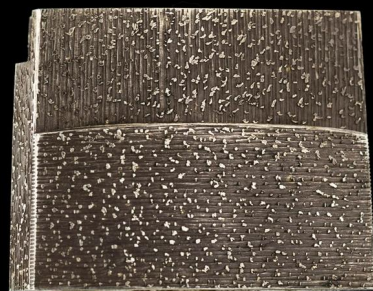
Crabs are symbolic of ninja warriors for they both move sideways, silently approaching their target.



*kinsuji* (black golden lines)



*Shirasaya*  
(protective scabbard)



silver *habaki* with  
straight file marks

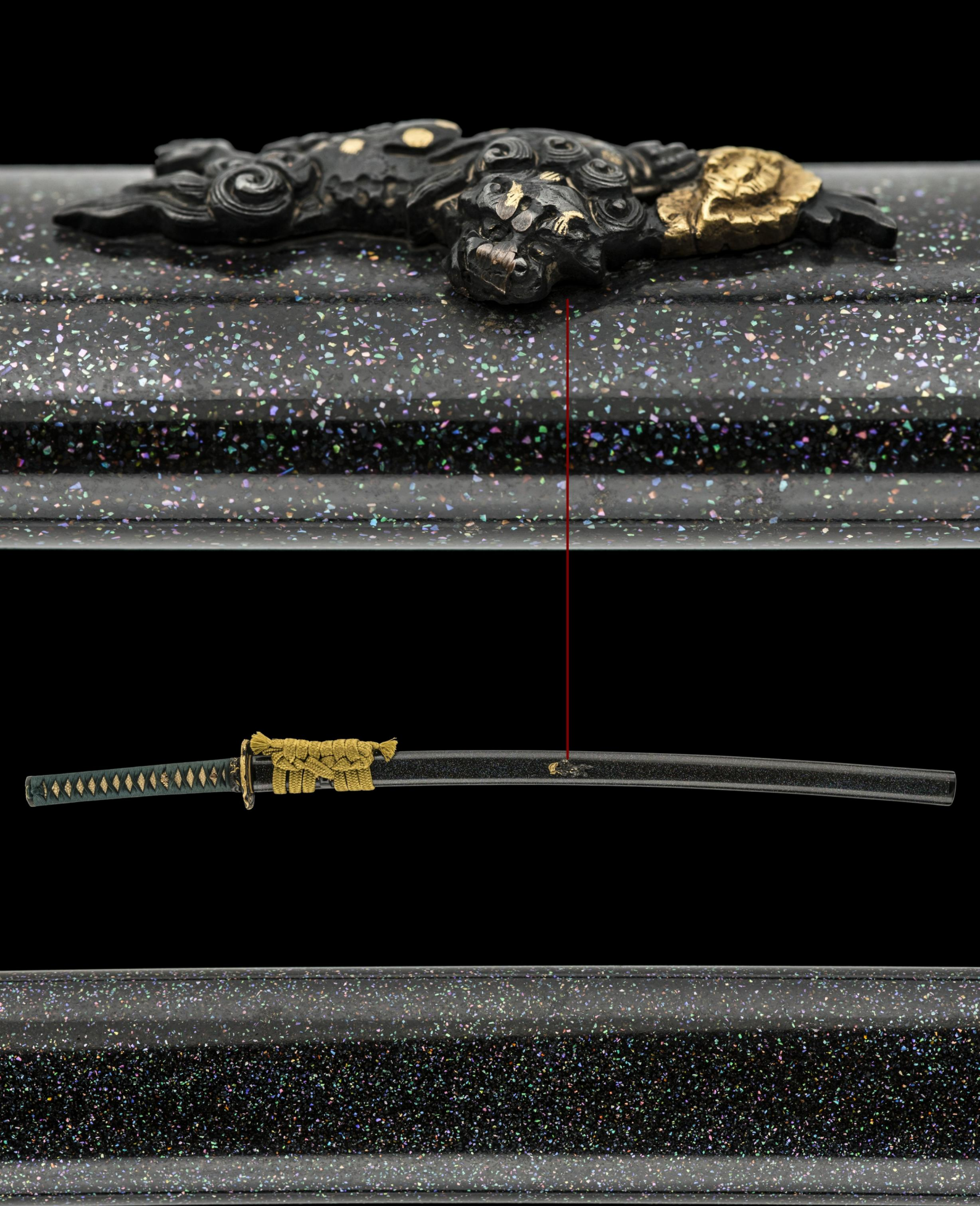
*Aogai-mijin-nuri saya  
uchigatana-koshirae*  
(青貝微塵塗鞘打刀拵え)

*Uchigatana-koshirae  
with saya in mother-of-pearl  
lacquer decorated with  
limpet elements*

Crafted during the  
Late Edo period  
(1780~1867)



*NTHK-NPO Kanteisho  
Certificate of Authenticity*



The dusting of mother-of-pearl gives the lacquered saya a night-sky effect.

A *shisa guardian lion* fastened on the *saya* provides spiritual protection for the owner.

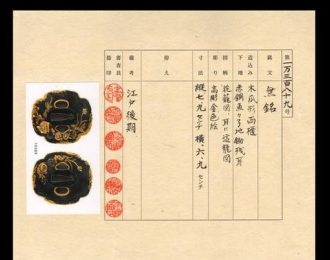
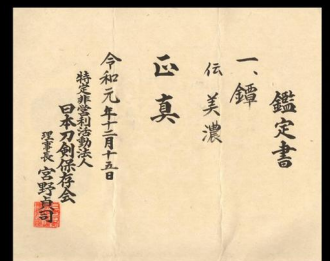




This is a multi-lobed *shakudo nanako tsuba* depicting a beautifully detailed flower basket. A dragon wraps around the rim of the tsuba.

This tsuba was created by the Mino school.

An NTHK-NPO Kanteisho certificate of authenticity attributing the piece to the *late-Edo period* circa 1780~1867 has been attained.





(reverse)





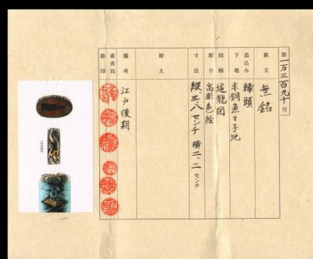
Powerful dragons dominate the koshirae theme.  
As seen here on both the *fuchi-kashira* and *menuki*.





*Kashira* (pommel)

attributed to the  
*Mino school*  
(Late Edo period, 1800s)



NTHK-NPO Kanteisho  
Certificate of Authenticity



Koshirae bag