



ITEM# UJKA367

## A YUKIHIRO KATANA

SIGNED, SHINTÔ PERIOD (LATE KANBUN~ENPÔ ERA: 1667~1675)

**Swordsmith:** *Ichi Hizen no Kuni Dewa no Kami Fujiwara Yukihiro (shodai)*  
**Measurements:** **Length:** 69.7cm (*ubu*) **Curvature:** 1.6cm **Motohaba:** 2.98cm **Weight:** 705g  
**Jihada:** *Ko-mokume leading to Hizen konuka-hada, thick nie-deki, ji-nie and lots of chikei*  
**Hamon:** *Beautiful gunome chôji-midare with kinsuji, sunagashi, and abu nomefu*  
**Certificate:** **NBTHK Tokubetsu Hozon (Especially Worthy of Preservation)**  
**Fujishiro:** **Jô-saku (a superior swordsmith)**  
**Authentication:** **Sayagaki by unknown artist**  
**Included:** *Shirasaya, fuemaki koshirae, stand, kit, booklet, printed description*

**SOLD**

Talented *Hizen* swordsmith **Yukihiro**, son of *Yoshinobu*, and younger brother to *shodai Masahiro* was born in 1617 and received his *Dewa no Daijo* title in 1648. His *Dewa no Kami* title was awarded to him in 1663. This superb katana has terrific energy - a fine example of a brilliant *chôji-midare* with Yukihiro's trademark *abu nomefu* - an iconic horsefly eye appearing as circular dots in the *ashi*. Those that appreciate a quality *jihada* will be pleased soak in the finely forged *ko-mokume-hada* with an incredible amount of swirling pools of *chikei* that stand out beautifully to the naked eye. Its set of *koshirae* features a mother-of-pearl lacquered *saya* called *fuemaki*. This magnificent type of lacquer work is extremely demanding and requires exacting standards. The NBTHK Hozon certified *tsuba* comes from *Hizen*'s neighbouring province *Higo* by the *Kugimoto* school celebrates motifs that bring good fortune. Peonies further abound on the lovely *katate-maki* braided hilt.

^  
Saki-kasane: 4.5mm

Moto-kasane: 6.1mm

Omosa: 705g

Kissaki: 4.04cm  
Saki-haba: 2.09cm

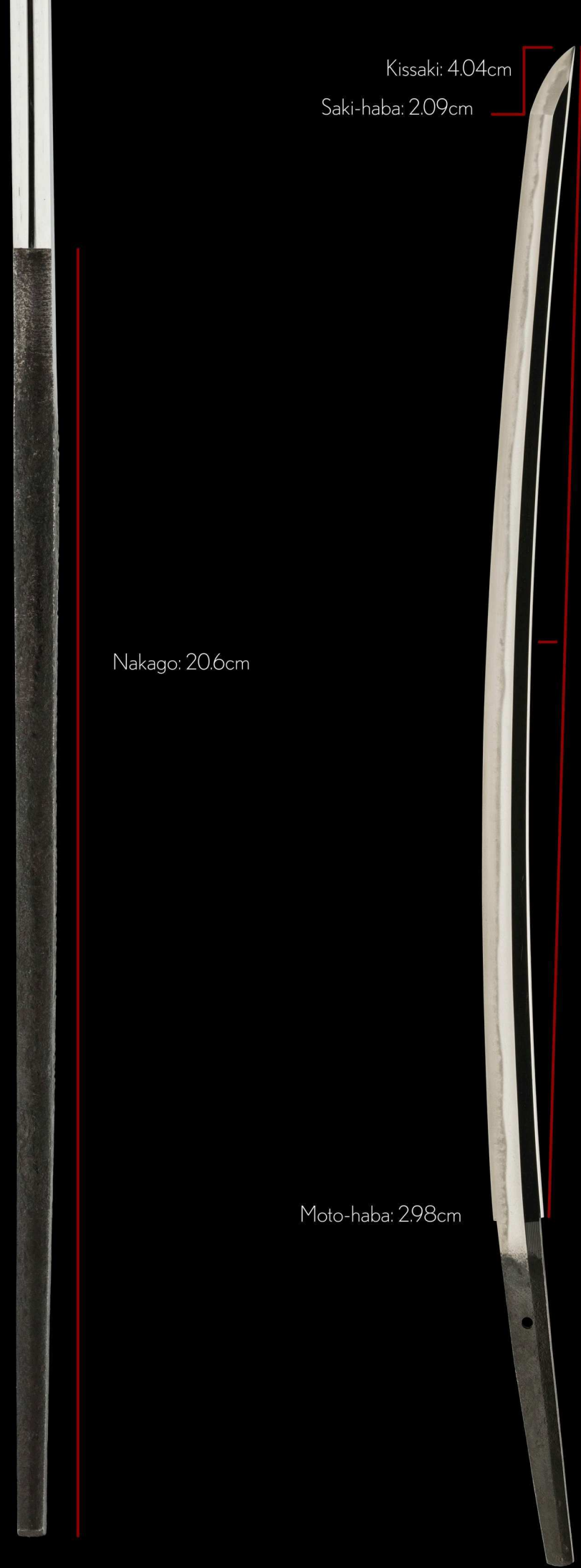
Nakago: 20.6cm

Moto-haba: 2.98cm

Nagasa: 69.7cm

Sori: 1.60cm

Mekugi-ana: 1



Talented *Hizen* swordsmith *Yukihiro*, son of *Yoshinobu*, and younger brother to *shodai Masahiro* was born in 1617 and received his *Dewa no Daijo* title in 1648. His *Dewa no Kami* title was awarded to him in 1663. This katana was made after he received his "no Kami" title.

In 1650 *Yukihiro* moved to *Nagasaki* to study Dutch forging techniques with *Hisatsugu* and *Tanenaga*. It is assumed that he also studied the *Bizen Ichimonji* in *Edo* (Tokyo) with *Noriyoshi*. Swords produced by *Yukihiro* display all the hallmarks that make the *Hizen* tradition sought after.

This superb katana has terrific energy - a fine example of a brilliant *chôji-midare* with *Yukihiro*'s trademark *abu nomefu* - an iconic horsefly eye appearing as circular dots in the *ashi*. Those that appreciate a quality *jihada* will be pleased with the finely forged *ko-mokume-hada* and the incredible amount of swirling pools of *chikei* that stand out beautifully to the naked eye.

Given the elegant, curvy shape of the sword and also through examination of the signature, it is likely this sword was crafted at the end of the *Kanbun* era or into the early *Enpô* era years making it one of the final swords *Yukihiro* made in his storied career.

Its set of *koshirae* features a mother-of-pearl lacquered saya called *fuemaki*. This magnificent type of lacquerwork is extremely demanding and requires exacting standards. The NBTHK Hozon certified tsuba comes from *Hizen*'s neighbouring province *Higo* by the *Kugimoto* school celebrates motifs that bring good fortune. Peonies further abound on the lovely *katate-maki* braided hilt.

*Yukihiro* died on May 27, 1683 and no less than six generations of *Yukihiro* followed in their master's footsteps. *Yukihiro* is ranked as *jô-saku* - a superior swordsmith - and is one of the most celebrated smiths in the *Hizen* arsenal of Japanese swords.



(Ichi) 一  
(Hi) 肥  
(zen, no) 前  
(Kuni) 國  
(De) 出  
(wa, no) 羽  
(Kami) 守  
(Fuji) 藤  
(wara) 原  
(Yuki) 行  
(hiro) 廣

Location: *Hizen* (resident of Saga)  
Title: *Dewa no Kami* (Lord of Dewa province)  
Clan name: *Fujiwara*  
Swordsmith: *Yukihiro* (first generation)

*ubu-nakago* (original, unaltered tang)  
*sujikai-yasurime* (diagonal file marks)





(reverse)

特 選  
06202406

No 1022890



鑑定書

一 刀 銘 一 肥前国出羽守藤原行広

長二尺三寸

右は當協會に於て審査の結果特別保存刀剣と  
鑑定しこれを証する

令和六年八月二十三日

公益財団法人日本美術刀剣保存協會



東京都 教育委員会  
第 327073 号  
令和5年9月16日

## NBTHK Tokubetsu Hozon Certificate of Designation

A sword designated as *Especially Worthy of Conservation*  
by the Society for the Preservation of the Japan Art Sword

Issued in the 6th year of Reiwa (2024), February 23rd

One, Katana

*Mei* (signature)

*Ichi Hizen no Kuni Dewa no Kami Fujiwara Yukihira*

*Nagasa* (length)

2-shaku 3-sun (69.7cm)

Nihon Bijutsu Token Hozon Kyokai  
(NBTHK)



肥前國出羽守藤原行廣

*Hizen no Kuni Dewa no Kami Fujiwara Yukihiro*

Dewa no Kami Fujiwara Yukihiro from Hizen Province

初代

*Shodai*

1st generation

刃長二尺三寸三分

*Hachô 2-shaku 3-sun 3-bu*

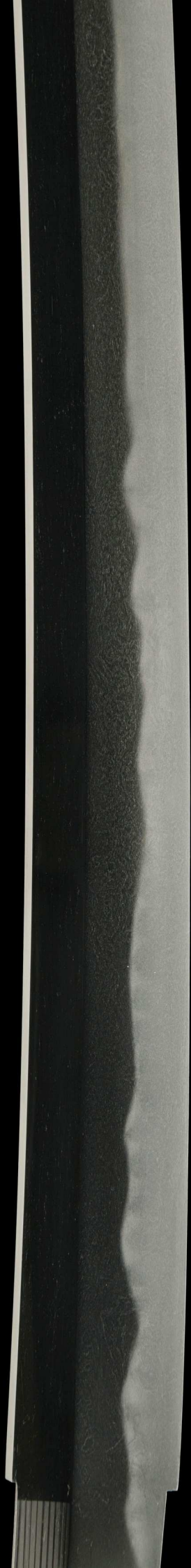
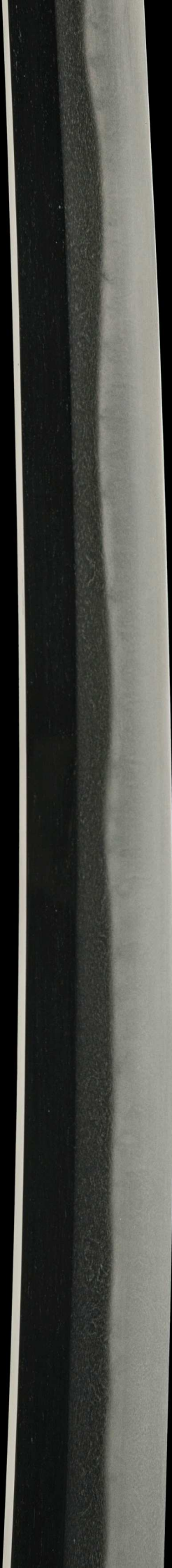
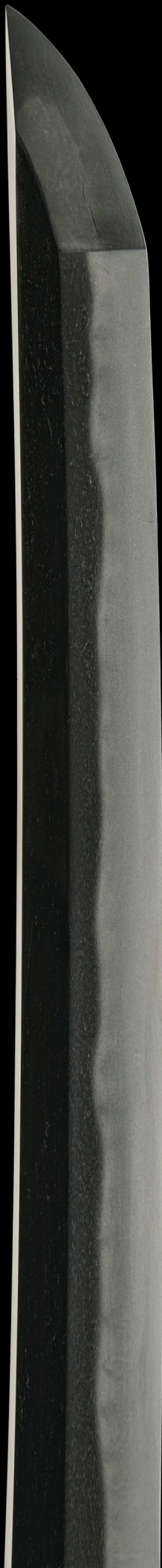
Blade length ~70.0cm

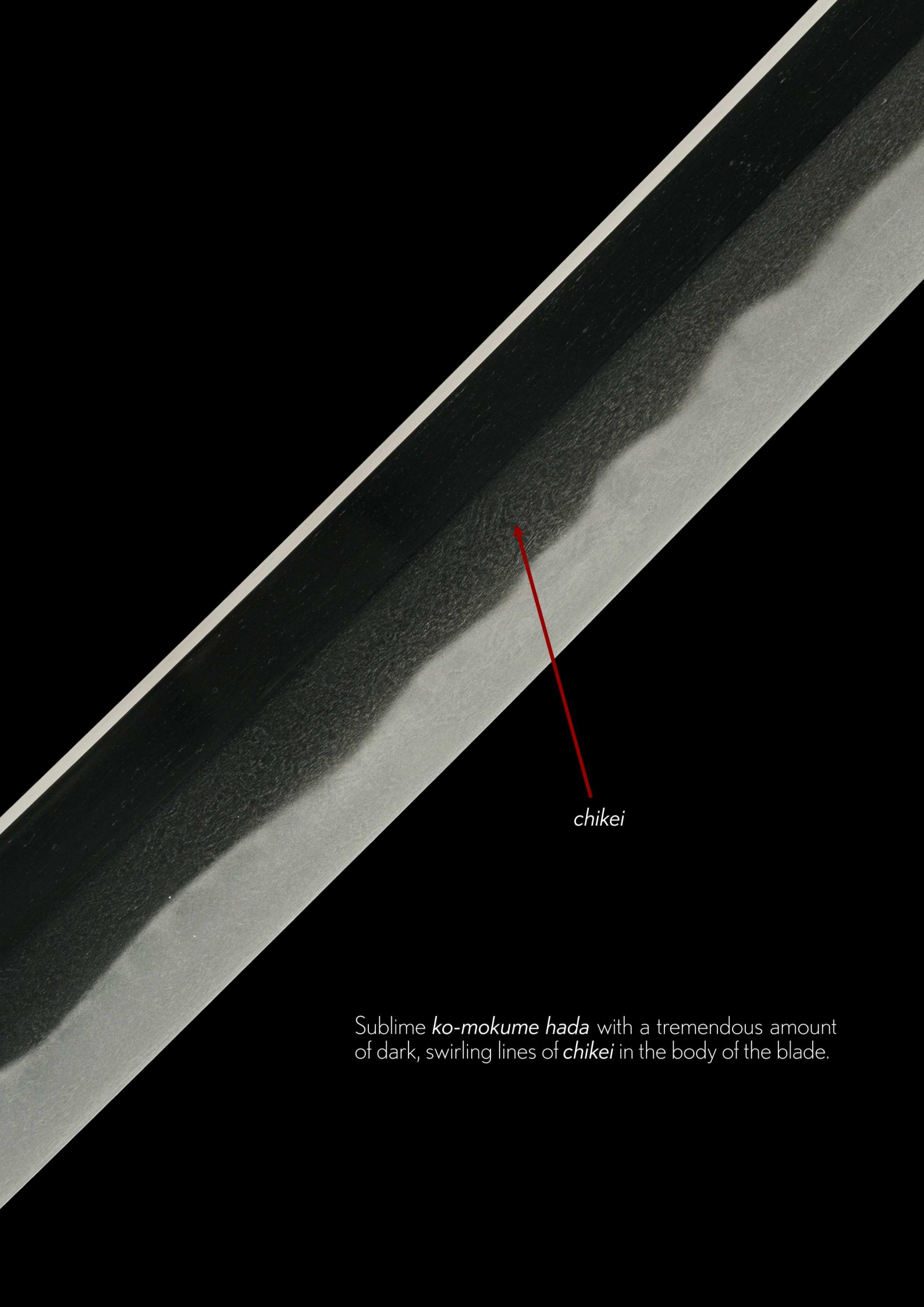
反り五分五厘

*Sori 5-bu 5-rin*

Curvature ~1.6cm



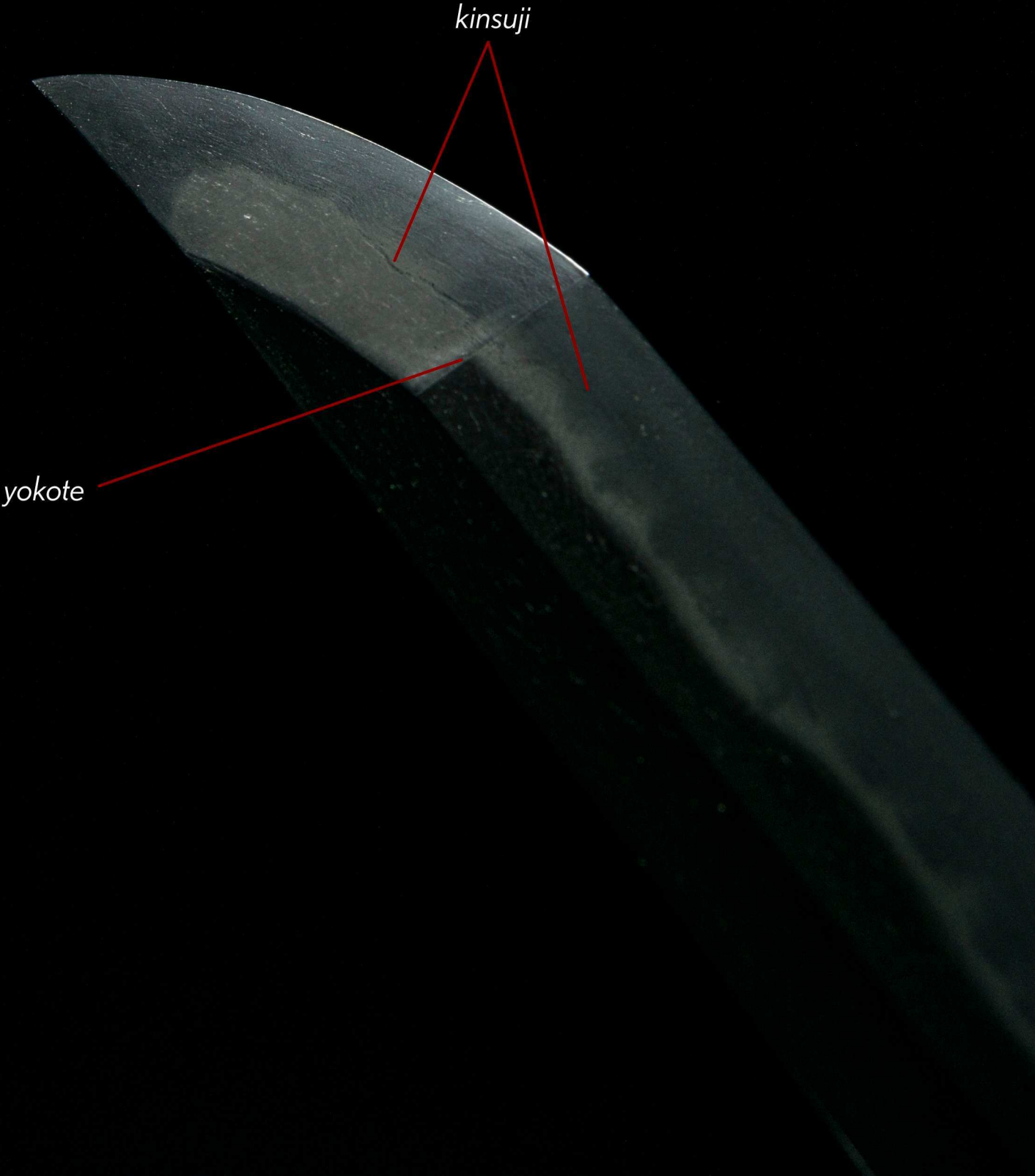




*chikei*

Sublime *ko-mokume hada* with a tremendous amount of dark, swirling lines of *chikei* in the body of the blade.

A magnificent long black line of *kinsuji* (*nie* crystals) channels through the *yokote* (the dividing line between the *kissaki* tip and the blade) and well into the *bôshi*.




*kinsuji*

*yokote*



Dark lines of *chikei* woven beautifully into the expertly forged *konuka-hada* that's known to resemble rice bran.

The image shows two blades of a sword, likely a katana, set against a dark background. The blades are positioned diagonally, with the top blade pointing towards the upper right and the bottom blade pointing towards the lower right. Both blades exhibit a unique pattern of circular dots, known as 'horsefly eyes' or 'abu nomefu', which are located on the 'ashi' (legs) of the blade. The lighting highlights the texture and the sharp edge of the blades. Two red lines originate from the text 'abu nomefu or 'horsefly eyes'' and point to the specific areas on the blades where the circular dots are visible.

*abu nomefu* or 'horsefly eyes'

Swords by *Yukihiro* have a unique feature called *abu nomefu* or 'horsefly eyes' where circular dots of *nie* appear in the *ashi* (legs).

(signed tachi side of the blade)

A close-up photograph of a sword blade, showing the hamon (temper line) pattern. The blade is dark, and the hamon is a lighter, serrated line. The pattern consists of long, thin, downward-pointing 'legs' (ashi) that resemble icicles. The blade is curved, and the hamon flows along its length. A red line points from the text to the serrated area.

The *choji-midare hamon* has a serrated look along the *monouchi* area (top third of the blade) on the

Long *ashi* (legs) reminiscent of icicles formed in wintertime.

The hamon then serrates again flowing upwards towards the *shinogi* ridge line.

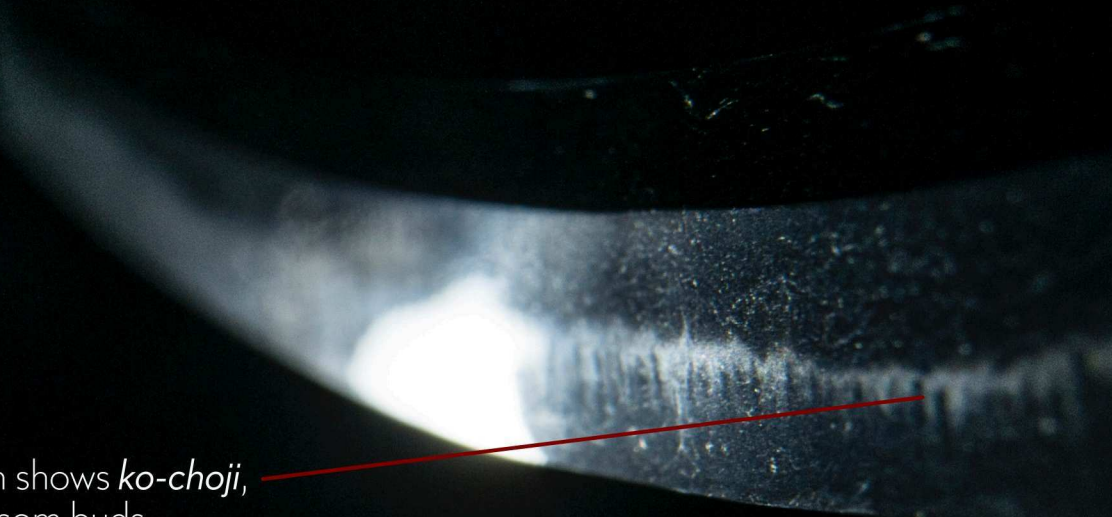
(unsigned ura side of the blade)



Interestingly, the *ura* side's *monouchi area* is less serrated tending to an undulating wave *notare* with sporadic '*ashi* icicles'.



A more classic *choji-midare* in the mid-area.



Here the hamon shows *ko-choji*, small clove blossom buds.



Pac-Man fever in the 17th century?





*Shirasaya*  
(protective scabbard)



gold *habaki* with  
horizontal file marks

*Kuro-roiro aogai-mijin  
fuemaki nuri saya  
uchigatana-koshirae*  
(黒呂色青貝微塵笛卷塗鞘打刀拵え)

*Uchigatana-koshirae  
lacquered in striped glossy black  
with unique texture of  
mother-of-pearl*

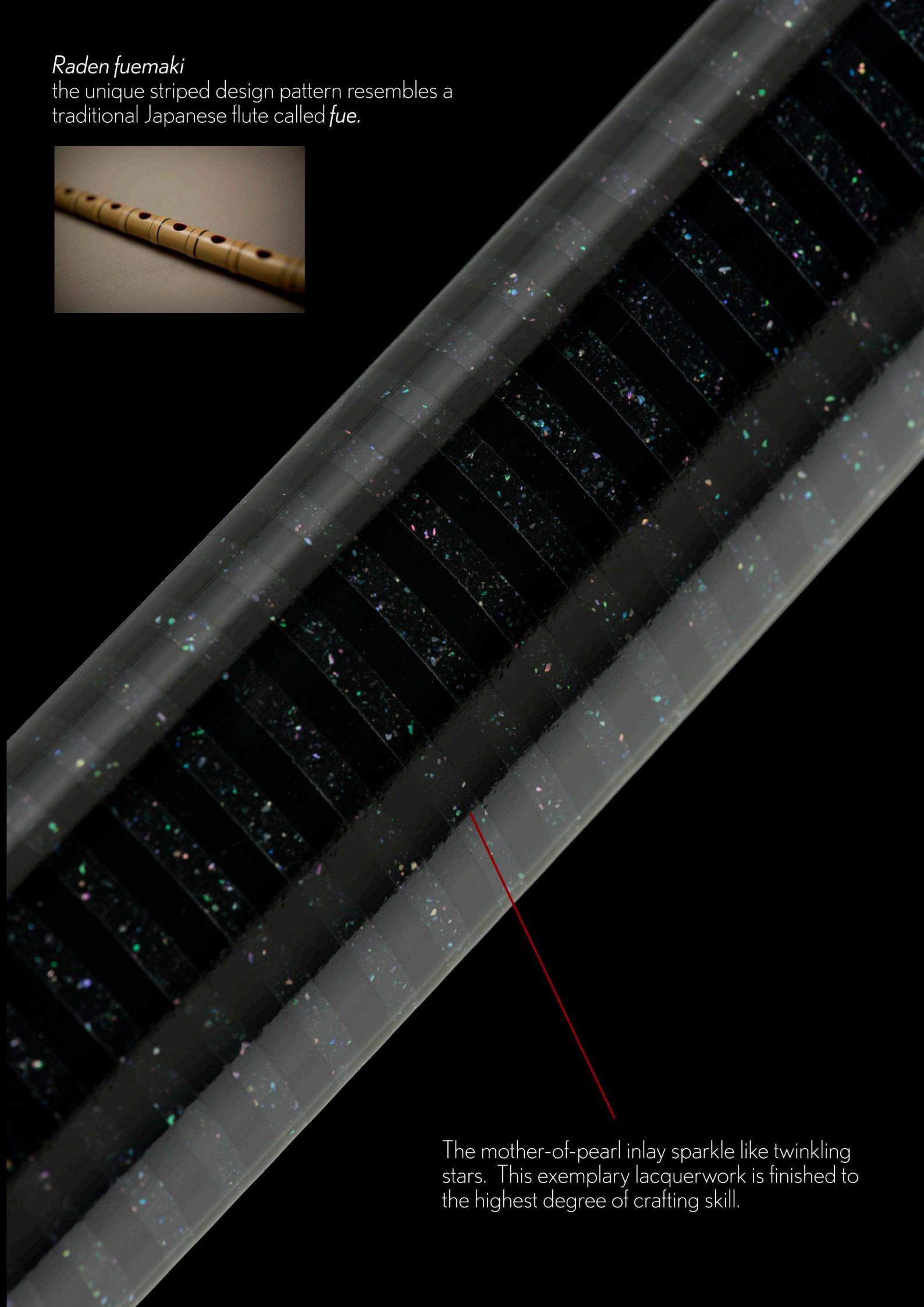
Crafted during the  
Modern period



NTHK-NPO Kanteisho  
Certificate of Authenticity

*Raden fuemaki*

the unique striped design pattern resembles a traditional Japanese flute called *fu*.

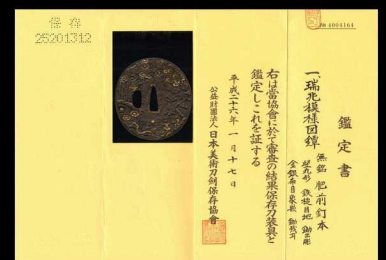


The mother-of-pearl inlay sparkle like twinkling stars. This exemplary lacquerwork is finished to the highest degree of crafting skill.



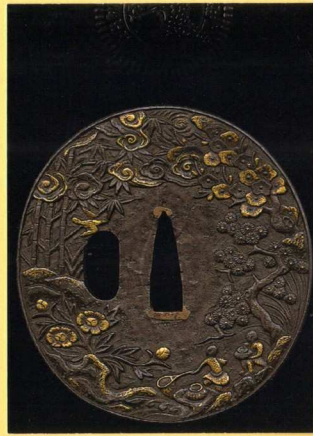
This is a beautiful polished iron tsuba with attractive depictions of flowers, birds, bamboo and clouds in silver and gold inlay. The motif itself is said to bring good fortune.

The tsuba has been attributed to the work of the *Kugimoto school* of *Hizen province*. Crafted circa the middle Edo period (1700~1780).



NBTHK Hozon  
Certificate of Authenticity

保 存  
25201312



No 4004164

鑑 定 書

一 瑞兆模様 圓鐔

無銘 肥前釘本

堅丸形 鉄槌目地 鋤出彫

金銀布目象嵌 鋤残耳

右は當協會に於て審査の結果保存刀装具と  
鑑定しこれを証する

平成二十六年一月十七日

公益財団法人 日本美術刀剣保存協會



NBTHK Hozon  
Certificate of Designation

A tsuba designated as *Worthy of Conservation*  
by the Society for the Preservation of the Japan Art Sword

Issued in the 26th year of Heisei (2014), January 17th

One, Tsuba

*Motif of zuichô-moyô (lucky motifs)*

*Mumei (unsigned)  
Hizen Kugimoto school*

*Elongated round shape, hammered iron, relief carved from ground plate,  
superficial gold and silver inlay, rim left raised after carving*

Nihon Bijutsu Token Hozon Kyokai  
(NBTHK)



(reverse)



*Menuki* (decorative grips on the hilt) celebrating the peony. In Japan, the peony is referred to as the "king of flowers" and a symbol of good fortune, bravery, and honour.

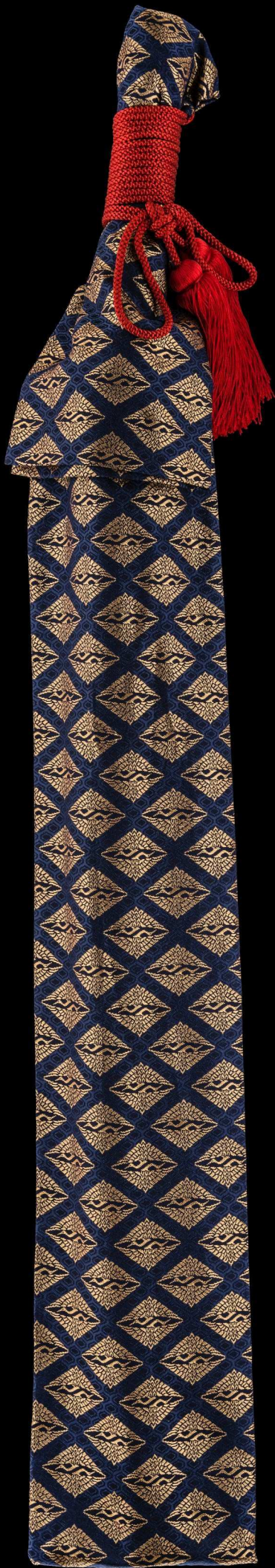
As such, it has been cherished by the samurai class for centuries.





*Kashira (pommel)*

*Shisa lion with peonies*



Koshirae bag.