



ITEM# UJKA339

SOLD

A NIDAI TADATSUNA KATANA

SIGNED, EARLY EDO PERIOD (ENPO ERA, 1673~1681)

Swordsmith:	Awataguchi Ômi no Kami Tadatsuna (<i>second generation</i>)		
Location:	Settsu province (Osaka)		
Measurements:	Length: 77.3cm (ubu)	Curvature: 1.0cm	Moto-haba: 3.2cm
Jihada:	Ko-itame with ji-nie, itame-hada in shinogi-ji, chikei		
Hamon:	Gorgeous suguha in nie-deki mixed with ashi, suguha and kinsuji		
Certificate:	NBTHK Tokubetsu Hozon (a sword Especially Worthy of Conservation)		
Fujishiro rank:	Jojo-saku (a highly superior smith)		
Authentication:	Sayagaki by Tanzan-sensei (Tanobe Michihiro)		
Included:	Shirasaya, bag, stand, kit, DVD, printed description		

SOLD

Standing tall with an extra-long *nagasa* (cutting edge) of 77.3cm this is a towering katana by second generation *Awataguchi Tadatsuna* of Settsu province. Crafted early in his career before he signed with his art name *Ikkanshi*, this shinto tour de force is quite simply, a beautiful sword.

Forged in exquisite *ko-itame* that extends into the *shinogi-ji*, streams of *nie* follow the bright *suguha* *hamon* with wide *nioguchi*. Fine *hataraki* of *sunagashi*, *kinsuji*, and playful *gunome-ashi* are a treat for the sword connoisseur. *Sayagaki* by Tanobe sensei describes the *hamon* as being *odayakana* meaning 'calm/gentle' echoing a level of elegance embedded in such courageous workmanship.

First generation *Tadatsuna* claims lineage to *Kunitsuna* of the *Awataguchi school* in *Yamashiro province* during the *Kamakura period*, thus the inclusion of *Awataguchi* in the signature.

Shodai *Tadatsuna* was a talented smith, however, it was not long that his son, *nidai Tadatsuna*, surpassed his father in every way. With the ability to replicate numerous traditions as well as carving elaborate *horimono*, *nidai Tadatsuna* is regarded as one of the finest smiths working in *Osaka* during the early *Edo period*.

Nidai Tadatsuna is rated *Jojo-saku* (highly superior swordsmith) by *Fujishiro*.

This long, gorgeous blade carries a beautifully forged *jigane* with a sublime *suguha hamon*.

Powerful in stature, elegance in its craftsmanship. This is the definition of form meeting function.





Saki-kasane: 4.6mm

Moto-kasane: 7.4mm

Omosa: 905g

Kissaki: 3.81cm

Saki-haba: 2.12cm

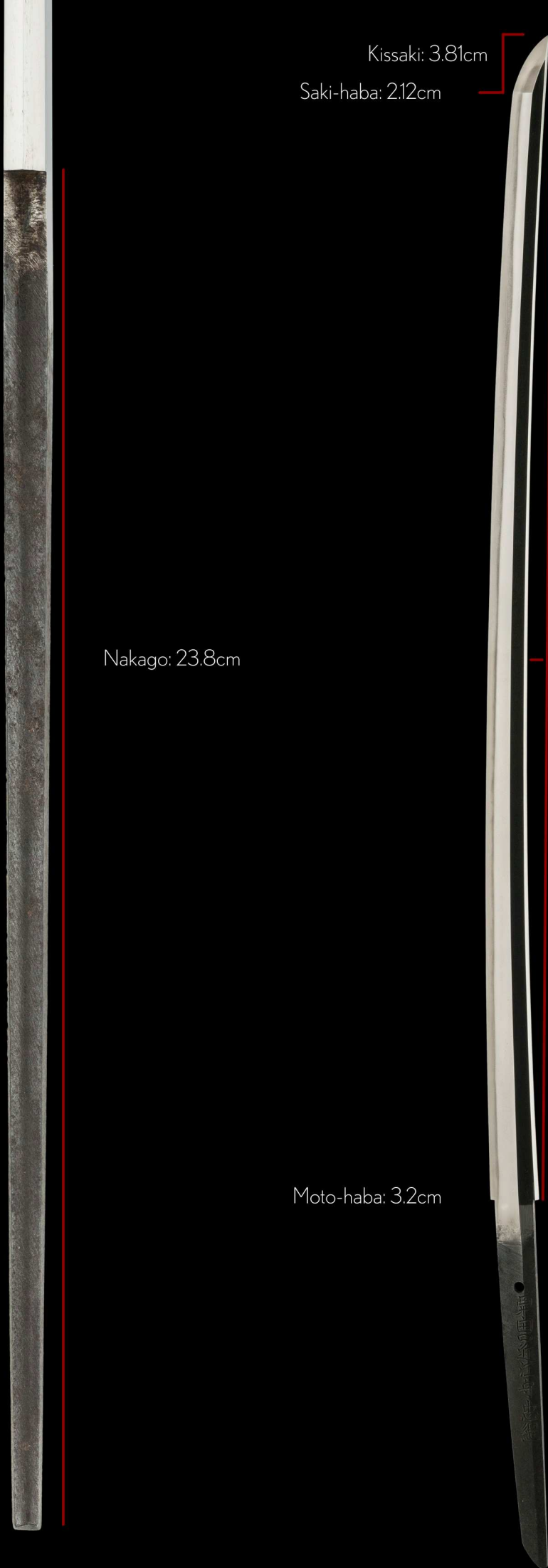
Nakago: 23.8cm


Moto-haba: 3.2cm

Nagasa: 77.3cm

Sori: 1.0cm

Mekugi-ana: 1





Location: *Settsu* (resident of Osaka)
Title: *Ômi no Kami* (Lord of Ômi province)
Swordsmith: *Tadatsuna* (second generation)

ubu-nakago (original, unaltered tang)
sujikai-yasurime (diagonal file marks)

粟 (Awa)

田 (ta)

口 (guchi)

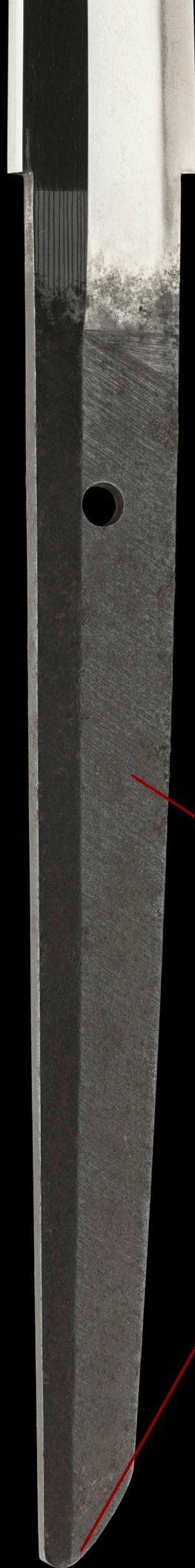
近 (Ô)

江 (mi, no)

守 (Kami)

忠 (Tada)

綱 (tsuna)



gorgeous patina on nakago

ha agari kurijiri
rounded end with a steep
climb towards the cutting edge

(*ura*, reverse)

特 保
27201505

No. 1003947



鑑定書

一刀 銘 栗田口近江守忠綱

長二尺五寸五分

右は當協會に於て審査の結果特別保存刀剣と
鑑定しこれを証する

平成二十七年七月十四日

公益財団法人日本美術刀剣保存協會



大阪 教育委員会
第 126625 号
平成27年 3月10日

NBTHK Tokubetsu Hozon Certificate of Designation

A sword designated as *Especially Worthy of Conservation*
by the Society for the Preservation of the Japan Art Sword

Issued in the 27th year of Heisei (2015), July 14th

One, Katana

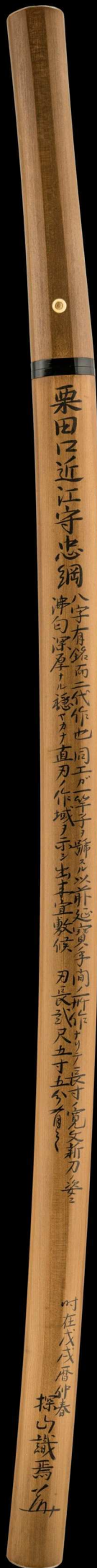
Mei (signature)

Awataguchi Ōmi no Kami Tadatsuna

Nagasa (length)

2-shaku 5-sun 5-bu (77.3cm)

Nihon Bijutsu Token Hozon Kyokai
(NBTHK)



粟田口近江守忠綱

Awataguchi Ōmi no Kami Tadatsuna

八字有銘而二代作也同工ガ一竿子ヲ號スル以前延寶年間ノ所作ナリテ長寸ノ寛文新刀ノ姿ニ沸匂深厚ナル穩ヤカナ直刃ノ作域ヲ示シ出来宜敷候

Hachiji arimei sikashite nidai saku nari. Dôkô ga ikkanshi o gôsuru izen enpô nenkan no shosa saku narite chôsun no Kanbun shintô no sugata ni nie nioi shinkô naru odayakana suguha no sakuiki o shimeshi deki yoroshiku sôrô

This blade bears an eight character signature and is a work of the second generation. It is of a Kanbun-shintô shape with a long nagasa and dates around Enpô (1673-1681), i.e., it was made before the smith used the art name Ikkanshi. It shows a calm suguha with a wide nioiguchi and much nie. It is of an excellent deki (quality craftsmanship).

刃長貳尺五寸五分有之

Hachô 2-shaku 5-sun 5-bu kore ari

Blade length 77.3 cm

时在戊戌曆仲春探山識焉

Ima tsuchinoe-inu doshi chûshun Tanzan shirusu + kaô

Written by *Tanzan* [Tanobe Michihiro] in the second month of the lunar calendar and in the year of the dog of this era (2018) + monogram.





A close-up, diagonal view of a sword blade against a black background. The blade is light-colored with a fine, textured surface. A dark, heavily textured section, likely the kasane (edge), is visible near the base. A red line points from the text to this section.

A thick *kasane* of over 7mm, gives the sword a healthy weightiness.

A spectacularly forged katana with
a beautiful stream of nie crystals.

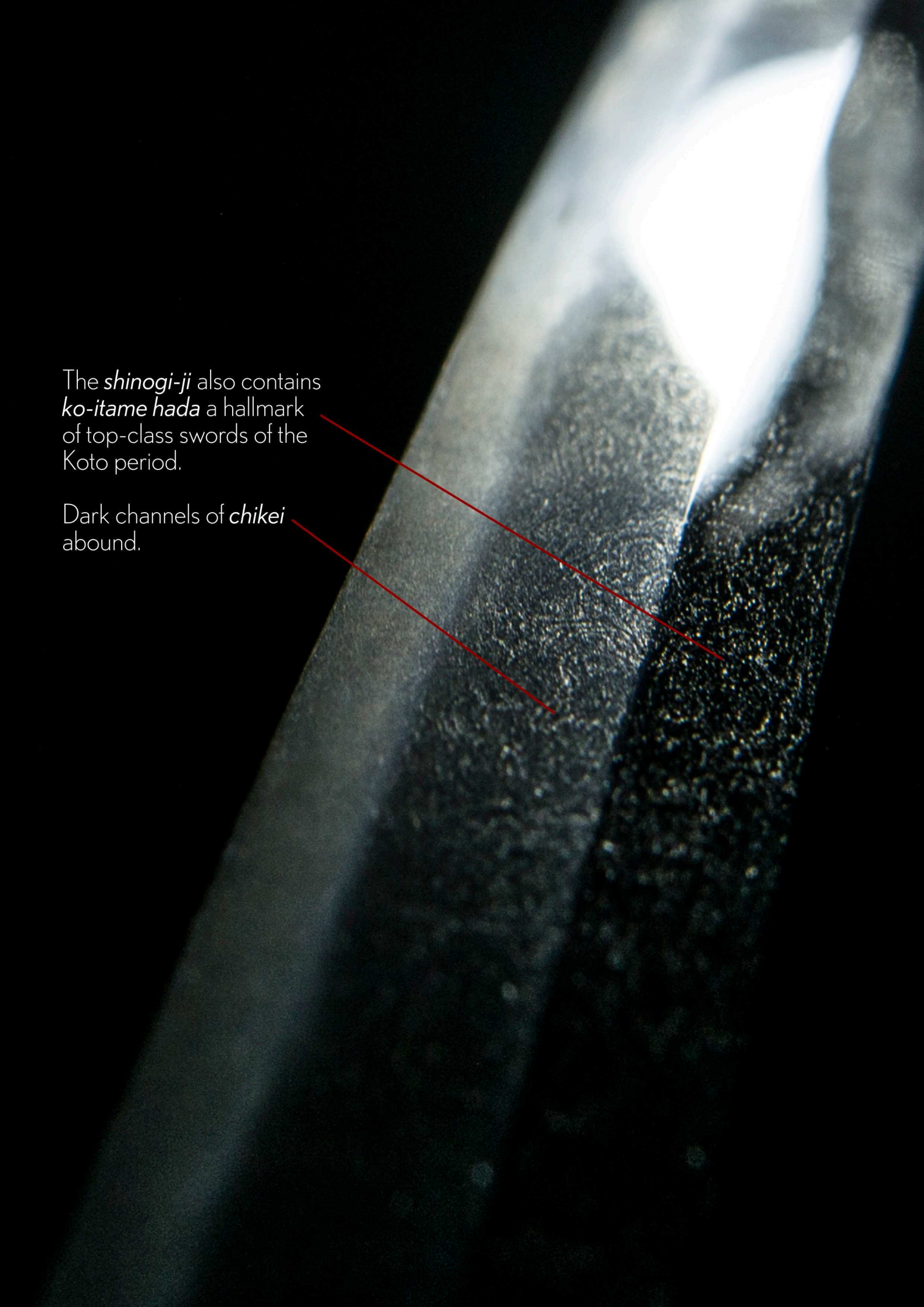


Tightly forged *ko-itame hada* that resembling
nashi-ji hada of the *Hizen tradition*.





Inspiring excellence.

A close-up photograph of a sword blade, showing the shinogi-ji (the upper part of the blade) and the chikei (the dark channels). The blade is dark and textured, with a bright, reflective edge. The background is black. Two red lines point from the text to the chikei channels.

The *shinogi-ji* also contains *ko-itame hada* a hallmark of top-class swords of the Koto period.

Dark channels of *chikei* abound.



hakikake (brushed)

Sugu ko-maru kaeri boshi with
a hint of brushed *hakikake*.

Chu-kissaki (medium length).





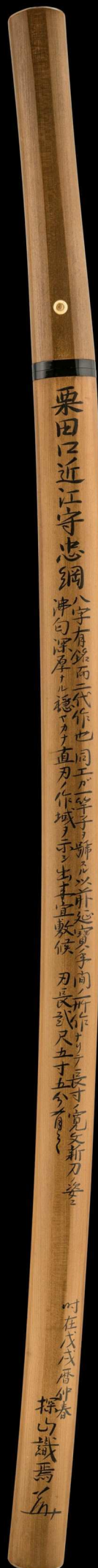
A bolt of *kinsuji* cracks
through the *suguha hamon*.



a river of *sunagashi*



A playful section of wavy *gunome-ashi*.



Shirasaya
(protective scabbard)



silver *habaki* with
diagonal file marks



The art of steel.

Excited about your next trip to Japan?

If you are travelling to Tokyo and are serious about acquiring an authentic Japanese sword, be sure to book a **private meeting** with us in advance.

Many swords from Unique Japan are sold privately every year to proud clients around the world. Contact service@uniquejapan.com where we'll discuss the type of sword, age and other special qualities you are seeking along with budget parameters.

Meetings are held at our studio near JR Ebisu or Meguro station - only minutes away from all major hotels in downtown Tokyo.

