

ITEM# UJKA337

SOLD

A KAWACHI SUKESADA KATANA

SIGNED & DATED, EDO PERIOD (3RD YEAR ENKYÔ ERA: FEBRUARY 1746)

Swordsmith:	<i>(Kikumon) Ichi Kawachi no Kami Sukesada (ubu nakago)</i>
Measurements:	Length: 64.2cm Curvature: 3.2cm(!) Motohaba: 2.9cm
Jihada:	<i>Well-forged ko-mokume hada with chikei and tobiyaki</i>
Hamon:	<i>Wide gunome-midare-hamon with kanitsune, kinsuji, sunagashi and yô (leaves)</i>
Certificate 1:	NBTHK Tokubetsu Hozon (designated as Especially Worthy of Preservation)
Certificate 2-3:	NTHK-NPO Kanteisho (a koshirae and tsuba designated as Authentic)
Fujishiro:	<i>Chûjô-saku</i> (ranked as an above average swordsmith)
Included:	Shirasaya, longevity koshirae, stand, kit, DVD, booklet, printed description

SOLD

This strong and broadly curved katana, dated to February 1746, by *Kawachi no Kami Sukesada* was evidently inspired by the powerful *katate-uchi* (one-handed katana) masterpieces from the mid-1500s during the turbulent late *Muromachi period*. It is a weighty, healthy and muscular piece that has remained essentially unchanged after nearly 300 years.

The *jihada* is a well-forged *ko-mokume hada* with a bright and complex *gunome-choji hamon* with areas that show *kanitsune* (crab claws). A handsome set of koshirae carries a theme of longevity in the form of *matsu* (pine) as depicted on the *Akasaka tsuba* with armed crabs as *menuki* preparing for battle. *Sukesada* is ranked as *chujô-saku*, an above-average swordsmith. This collectible katana represents one of his finer achievements and is unique to its time period.



Saki-kasane: 6.1mm

Moto-kasane: 8.4mm

Omosa: 865g

Nakago: 17.5cm

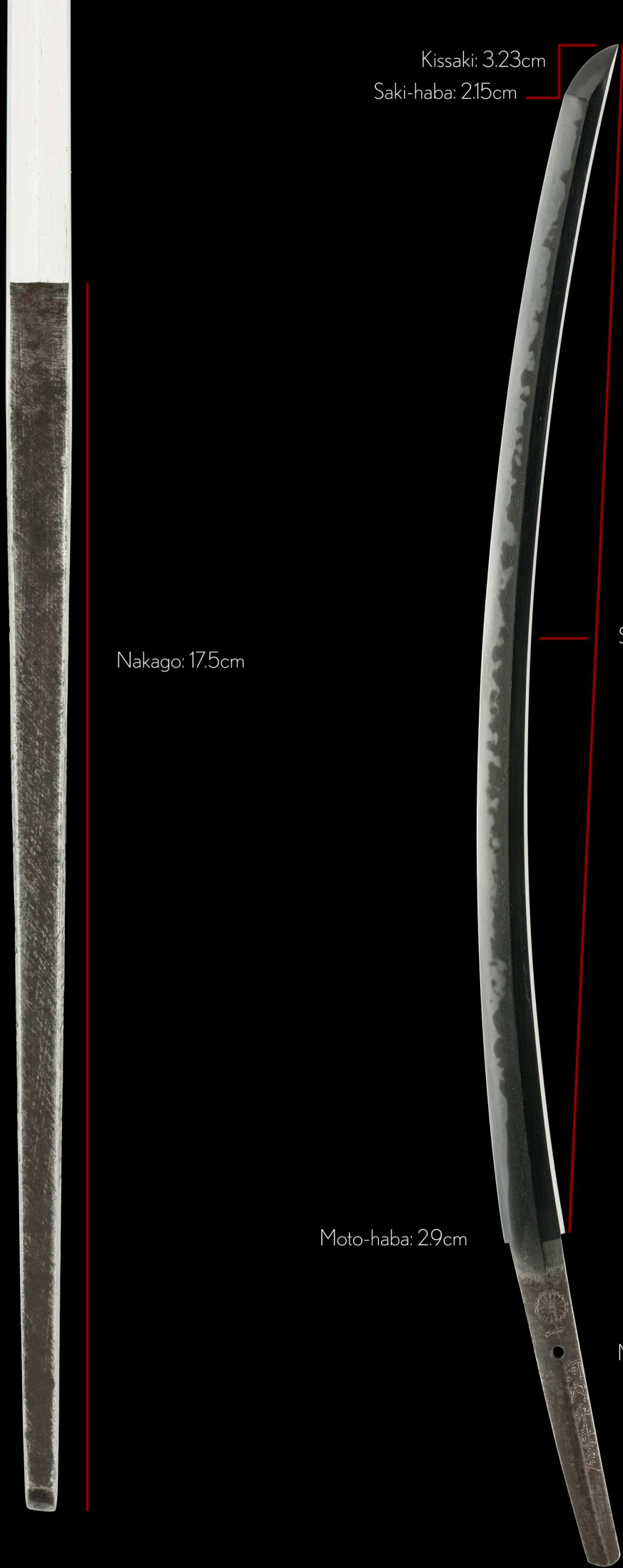
Kissaki: 3.23cm
Saki-haba: 2.15cm

Nagasa: 64.2cm

Sori: 3.2cm

Moto-haba: 2.9cm

Mekugi-ana: 1



Born *Yokoyama Nizaemon*, *Kawachi Sukesada* was a talented swordsmith and the son of the first generation *Sôzaemon Sukesada*.

He lived in Bizen province, loyal in his pursuit to re-establish the centuries-old Bizen sword-making traditions after the area was ravaged by the disastrous flooding of the *Yoshii* river in 1590.

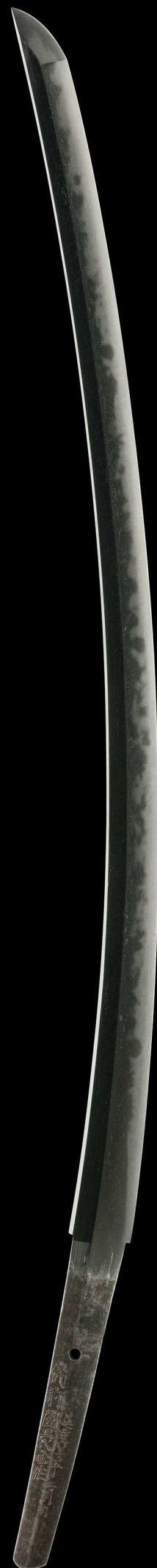
Sukesada received the honorary title *Kawachi no Kami* in May 1701 and added the imperial 16-petal chrysanthemum plus the character for "*Ichi*" to his *nakago*. Sukesada had an exploratory nature and worked in both *Settsu province* (Osaka) and *Mimasaka* (Okayama).

Kawachi Sukesada died on December 19th, 1777.

This strong and broadly curved katana, dated to February 1746, was evidently inspired by the powerful *katate-uchi* (one-handed katana) masterpieces from the mid-1500s during the turbulent late Muromachi period. It is a weighty, healthy and muscular piece that has remained essentially unchanged after nearly 300 years.

The *jihada* is a well-forged *ko-mokume* with a bright and complex *gunome-choji hamon* with areas that show *kanitsune* (crab claws). A handsome set of *koshirae* carries a theme of longevity in the form of *matsu* (pine) as depicted on the *Akasaka tsuba* with armed crabs as *menuki* preparing for battle.

This collectible katana represents one of his finer achievements and is unique to its time period.



Title: *Kawachi no Kami* (Lord of Kawachi province)
Swordsmith: *Sukesada* (second generation)

ubu-nakago (original, unaltered tang)



Kikumon - crest of the chrysanthemum
(by permission of imperial family)

一 (Ichi)

河 (Kawa)

内 (chi, no)

守 (Kami)

祐 (Suke)

定 (sada)

The "Ichi" mark pays homage to the great *Ichimonji-school* smiths that started in the early 1200s at the start of the golden Kamakura period.

Enkyô sannen nigatsu bi
Bizen no Kuni Osafune-jû

This sword was dated on a day in the second month in the third year of *Enkyô era* (February 1746) while Sukesada was a resident of *Osafune* village in *Bizen* province.



(Bi) 備
(zen, no) 前
(Kuni) 國
(Osa) 長
(fune) 船
(jû) 住

延 (En)
享 (kyô)
三 (san)
年 (nen)
二 (ni)
月 (gatsu)
日 (bi)



kiku-mon, up close

12200001



No 145224



鑑定書

長二尺一寸三分

一刀銘

(菊紋) 河内守祐定
延享三年二月日
備前國長船住

右は當協會に於て審査の結果特別保存刀剣と
鑑定しこれを証する

平成十二年二月九日

財団法人日本美術刀剣保存協會



NBTHK Tokubetsu Hozon Certificate of Designation

A sword designated as *Especially Worthy of Conservation*
by the Society for the Preservation of the Japan Art Sword

Issued in the 12th year of Heisei (2000), February 9th

One, *Katana*

Mei (signature)

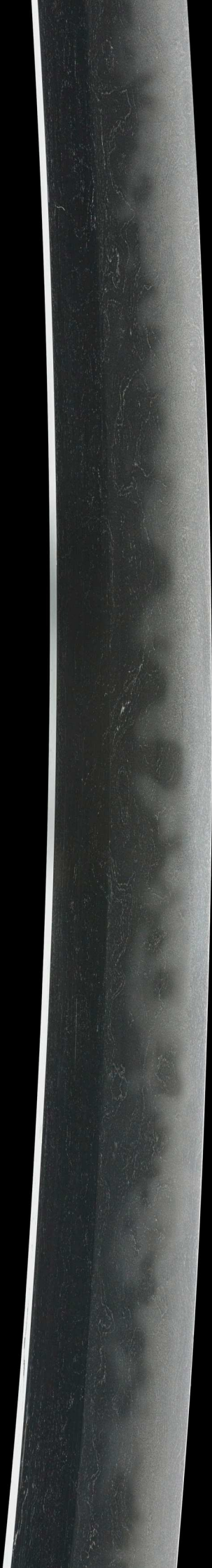
(*Kikumon*) *Ichi Kawachi no Kami Sukesada*
Enkyô sannen nigatsu bi
Bizen no Kuni Osafune-jû

Nagasa (length)

2-shaku 1-sun 2-bu (64.2cm)

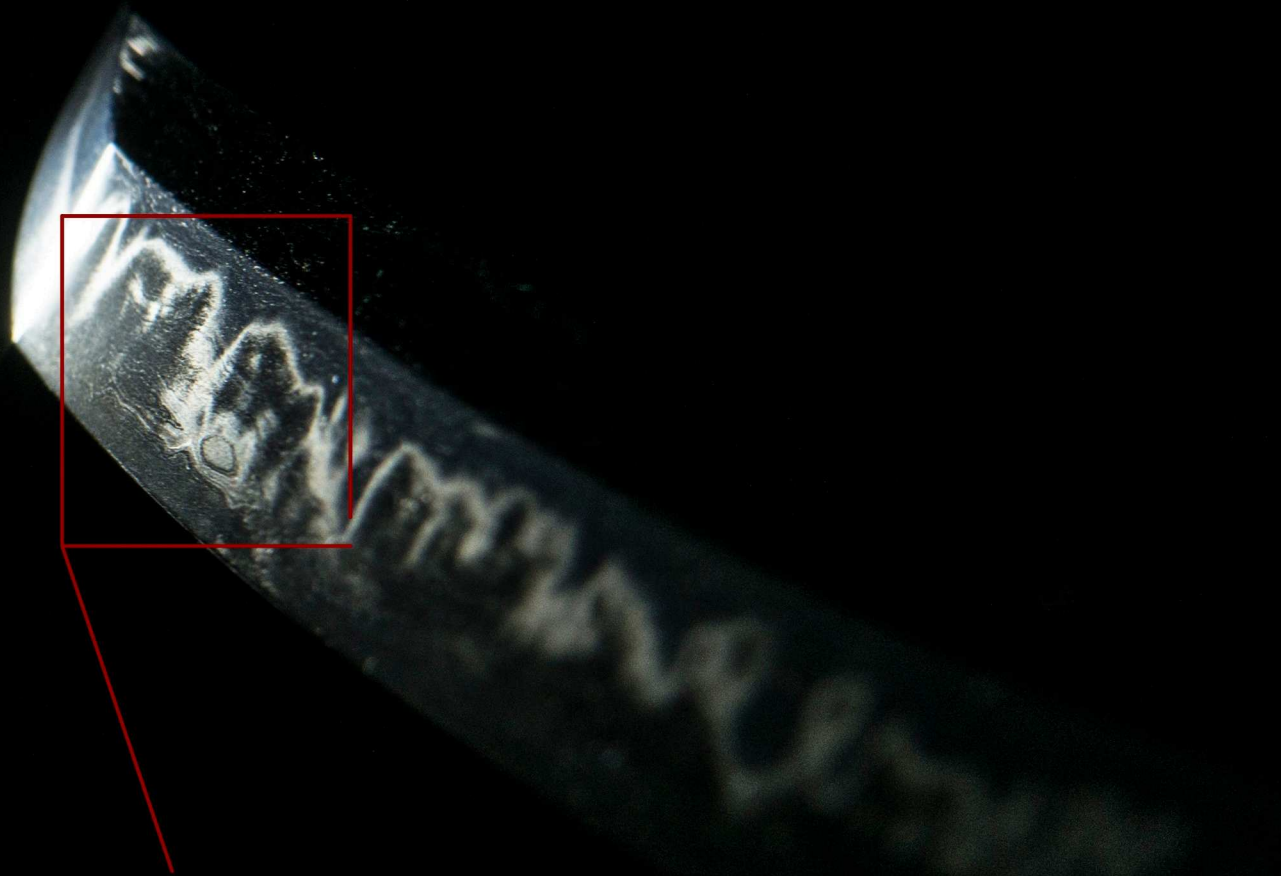
Nihon Bijutsu Token Hozon Kyokai
(NBTHK)



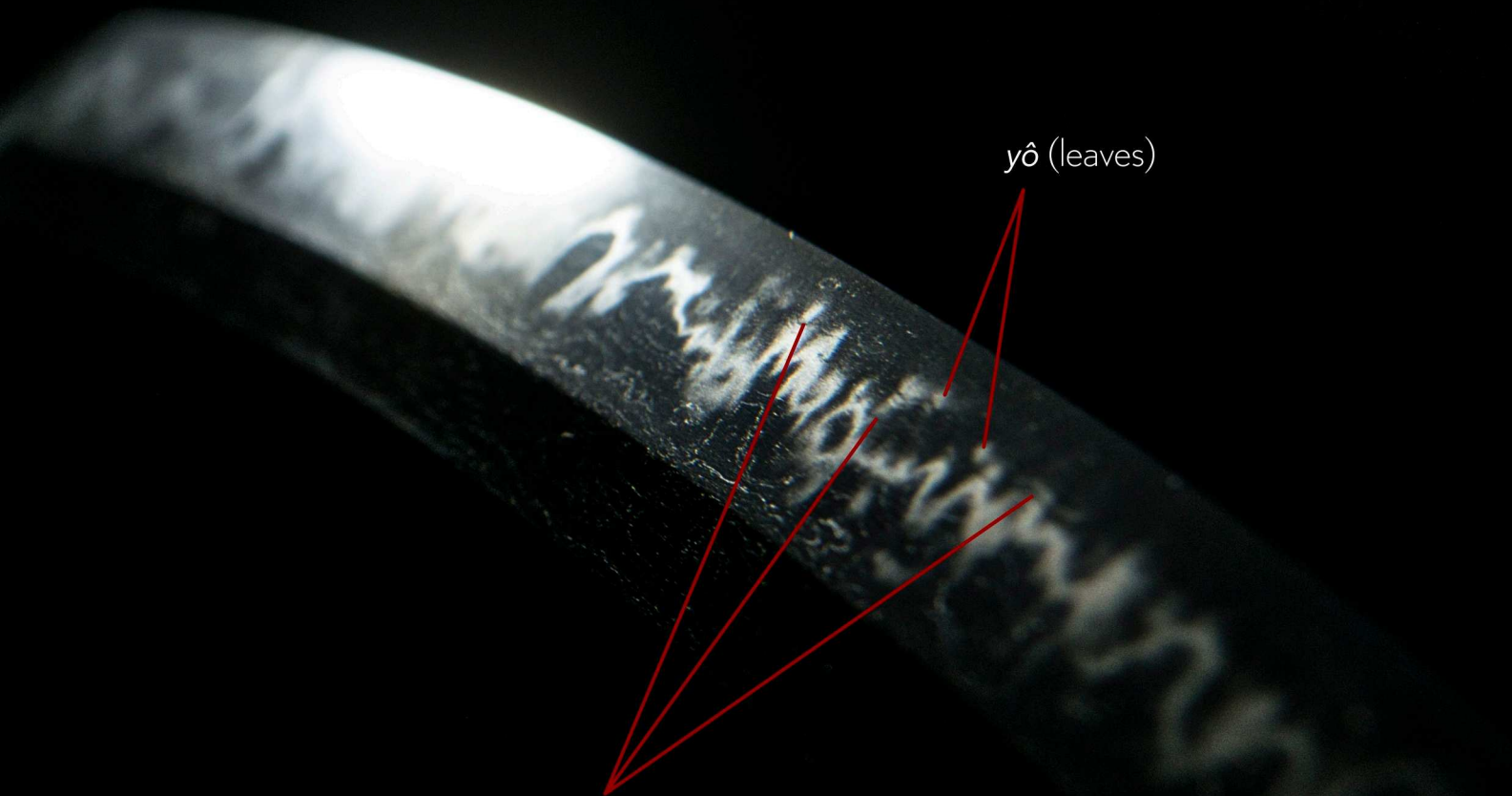




A vivid and complex *gunome-chôji midare hamon* comes alive percolating toward the *shinogi* ridge line with terrific energy.



Multiple lines of *sunagashi* sweep through the *hamon*. Note the unique whirlpool formation.



yô (leaves)

Black lines of *nie* crystals known as *kinsuji*.



The *hamon* delights us with a pattern of *kanitsume* or "crab claws".

Crabs are symbolic of ninja warriors for they both move sideways, silently approaching their target.



Shirasaya
(protective scabbard)

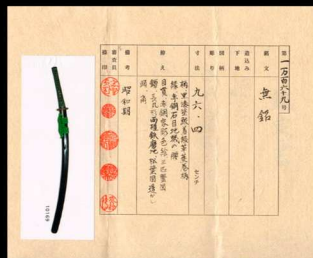


copper *habaki* with
straight file marks

*Kuro-ro-iro-nuri saya
uchigatana-koshirae*
(黒呂色塗鞘打刀拵え)

*Uchigatana-koshirae
lacquered in glossy black*

Crafted during the
Shôwa period
(1926~1989)



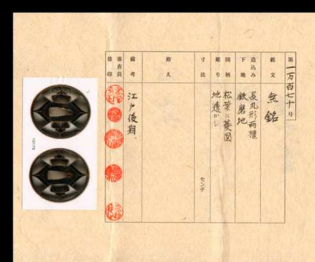
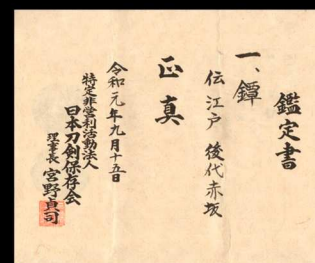
*NTHK-NPO Kanteisho
Certificate of Authenticity*



This is an impressive late-generation polished iron tsuba from the *Akasaka* school in Edo province (Tokyo).

This unique, geometric design is that of pine needles and diamonds. The pine tree represents longevity, good fortune and steadfastness. It is commonly linked with virtue and long life, even immortality.

An NTHK-NPO Kanteisho certificate of authenticity attributing the piece to the *late-Edo period* circa 1780~1867 has been attained.

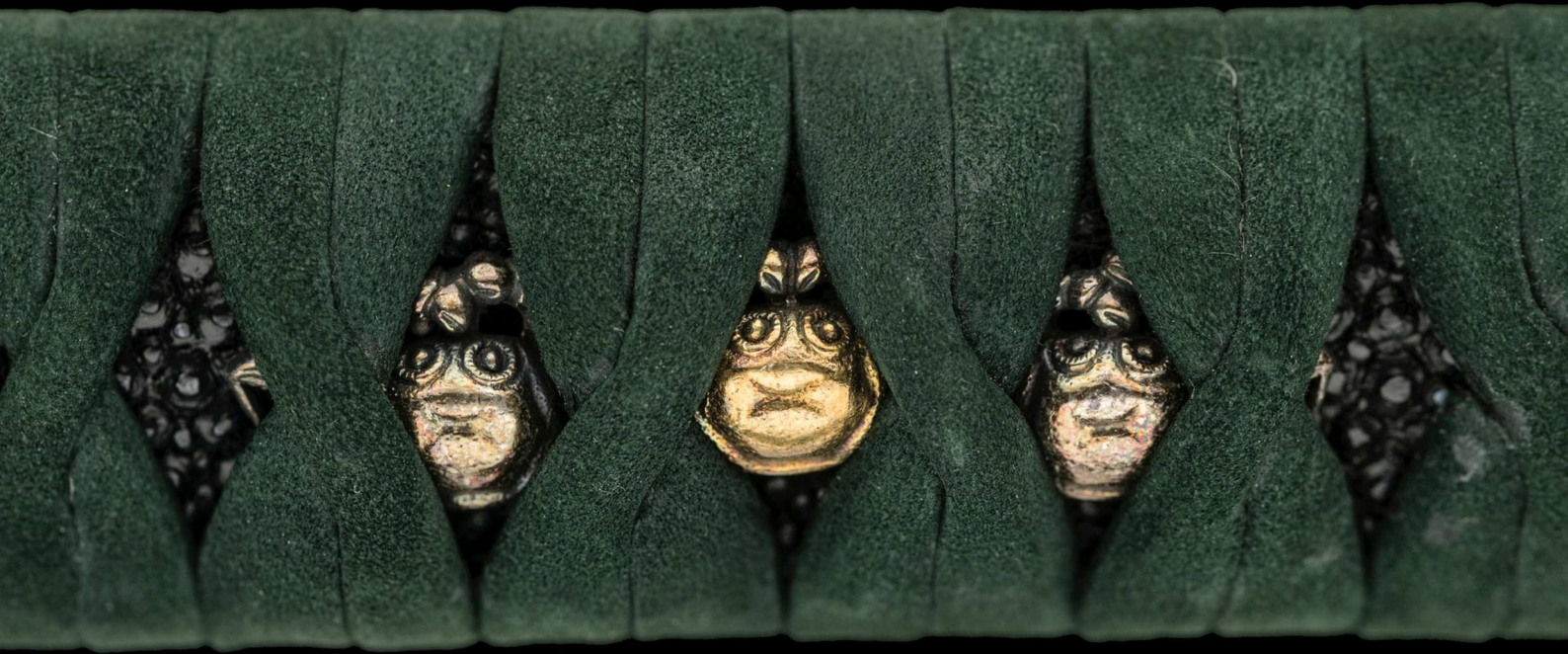
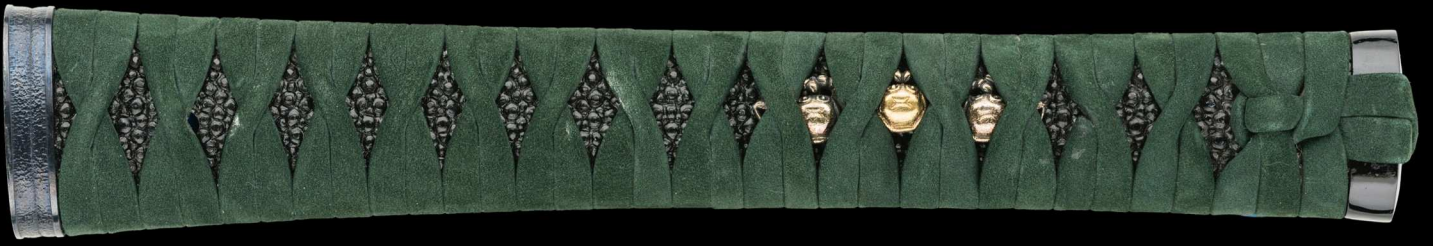




Drawing from the pine theme of the *tsuba*, both the *sageo* and *tsuka* are in shades of green.



ura, reverse



Menuki (decorative grips on the hilt) depicts two sets of three crabs nestled under the olive green leather-wrapped *tsuka* (hilt).

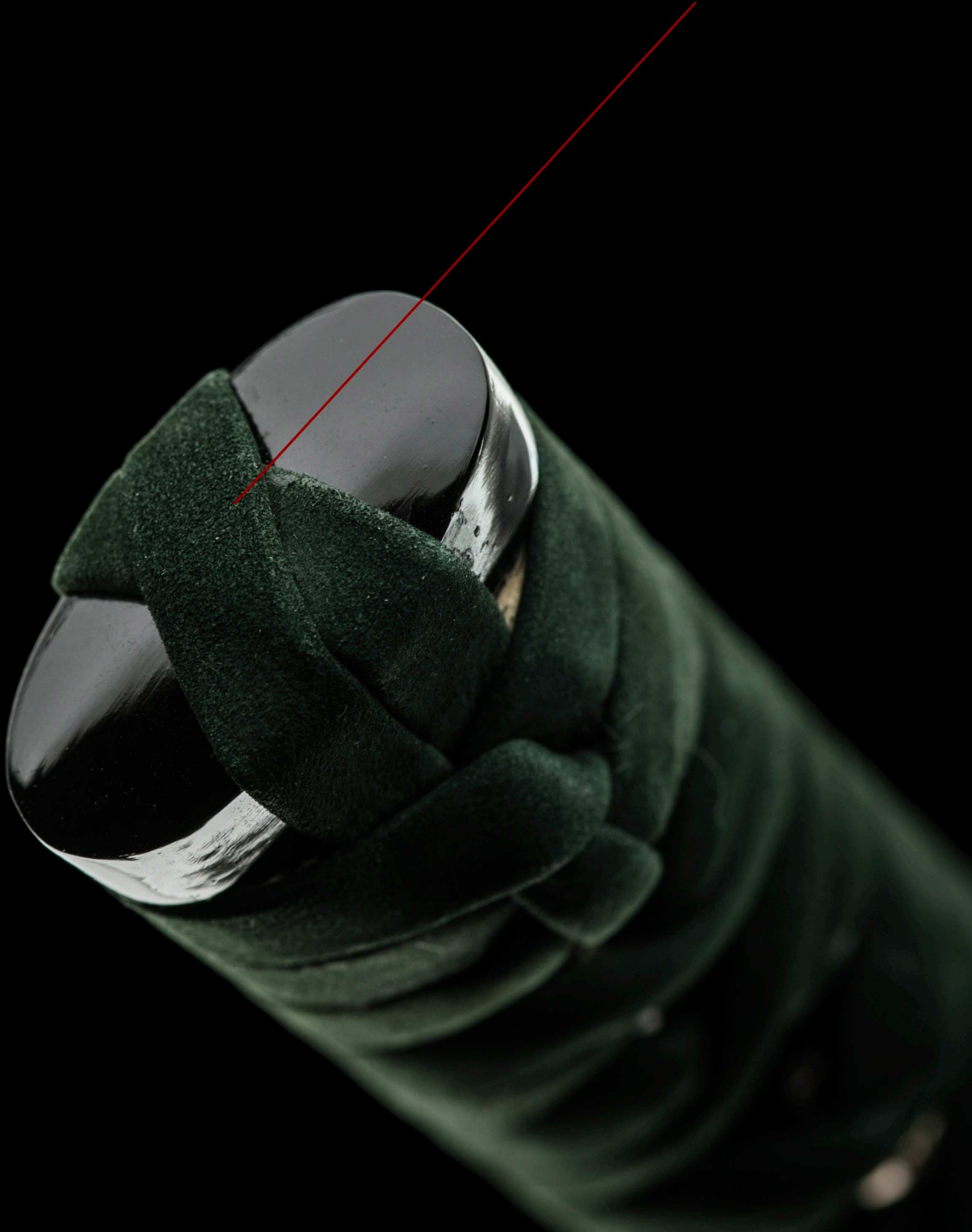
These menuki are a clever reference to the *kanitsune* (crab claw) elements found in the *hamon* (temper line) pattern. Crabs have long been admired by samurai for their impressive *endurance* and their *hard shells* representing loyal warriors in *suited armour*.





Armed and ready for battle.

The *kashira* is lacquered and braided over known as *makikake no kashira*.



On the lookout.





Koshirae bag

A complimentary sword maintenance kit with *mekugi-nuki* and a bottle of *Fujishiro* sword oil (trusted by the Japanese sword museum) is included with all sword purchases.

A printed and bound copy of the sword's full description from the catalogue is also included!



safe, extra large cloth for adding oil to the blade