



ITEM# UJKA335

SOLD

A YASUHIRO KATANA

SIGNED WITH KIKUMON, EARLY EDO PERIOD (KANBUN ERA: 1661~1673)

Swordsmith:	<i>Bicchû no Kami Tachibana Yasuhiro - (Kikumon) (ubu nakago)</i>
Measurements:	Length: 67.5cm Curvature: 1.0cm Motohaba: 3.07cm
Jihada:	Expertly forged <i>itame-hada</i> with <i>midare utsuri</i>
Hamon:	Brilliant <i>gunome-choji-midare</i> with long <i>ashi</i>
Certificate:	NBTHK Tokubetsu Hozon (designated as <i>Especially Worthy of Preservation</i>)
Fujishiro:	<i>Chûjô-saku</i> (ranked as an <i>above-average</i> swordsmith)
Sharpness:	<i>Wazamono</i> (rated as a <i>maker of sharp swords</i>)
Included:	Shirasaya, stand, kit, DVD, booklet, printed description

SOLD

Swordsmith Yasuhiro was one of the finest smiths working in Bizen tradition recreating the master works of the renowned *Ichimonji* school during the early Edo period. This katana carries a beautiful *gunome-choji midare hamon* with a *midare-utsuri* that brilliantly reflects both his talent and skill. The *nakago* has the prestigious mark of the chrysanthemum, known as the *kiku-mon*. The chrysanthemum symbolizes the sun and light giving this sword a sense of immortality. Yasuhiro is rated *wazamono* for his sharp swords and this blade lives up to this reputation.

This katana is currently in *shirasaya* only and represents a glorious opportunity to build a striking custom *koshirae* should the new caretaker desire.



Saki-kasane: 5.1mm

Moto-kasane: 7.5mm

Omosa: 710g

Kissaki: 3.13cm

Saki-haba: 1.96cm

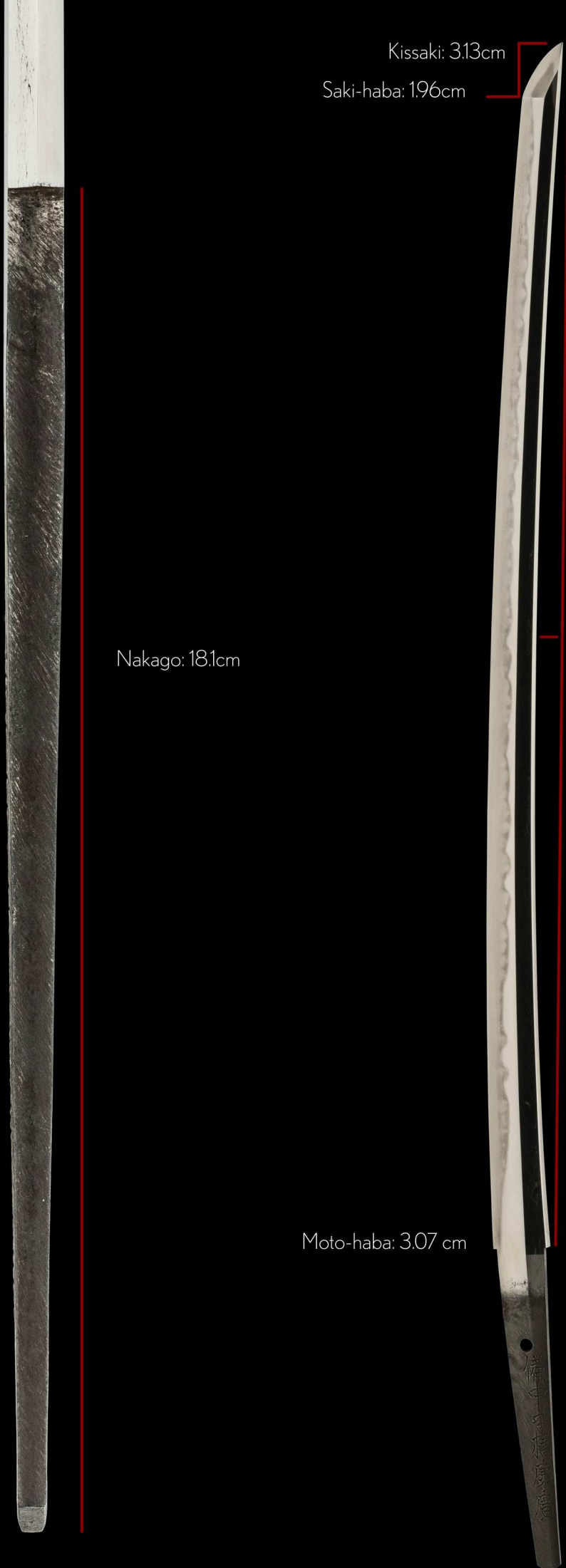
Nakago: 18.1cm

Moto-haba: 3.07 cm

Nagasa: 67.5cm

Sori: 1.10cm

Mekugi-ana: 1



Swordsmith Yasuhiro was one of the finer smiths working in Bizen tradition during the early Edo (*shinto*) period, circa the *Kanbun era* 1661-1673.

He was born *Tomita Gorôzaemon* in *Ômi province*, the second son of *Tosa Shôgen Tameyasu*. He moved to *Ôsaka* and eventually founded the *Ôsaka-Ishidô school*. His purpose was clear: recreate the master works of the renowned *Ichimonji school* as best as he could.

This katana was made to a length that is quick and easy to manoeuvre. The steel carries a beautiful *gunome-choji midare hamon* with a light *midare-utsuri* that reflects both his talent and skill.

The *nakago* has the mark of the chrysanthemum, known as the *kiku-mon* and remains in *ubu*, unaltered state. The chrysanthemum symbolizes the *sun* and *light*, giving this sword a sense of immortality.

This katana is in *shirasaya* only and represents an opportunity to build a meaningful custom *koshirae* should the new caretaker desire.

Yasuhiro is ranked *wazamono* for his sharp swords and *Fujishiro* ranked his work as *chûjô-saku* - an above average swordsmith - although his work is more in line with *jô-saku* (superior) smiths.





Location: *Settsu* (resident of Osaka)

Title: *Bitchû no Kami* (Lord of Bicchû province)

Clan name: *Tachibana*

Swordsmith: *Yasuhiro* (first generation)

ubu-nakago (original, unaltered tang)

sujikai-yasurime (diagonal file marks)

備 (Bi)

中 (tchû, no)

守 (Kami)

橋 (Tachibana)

康 (Yasu)

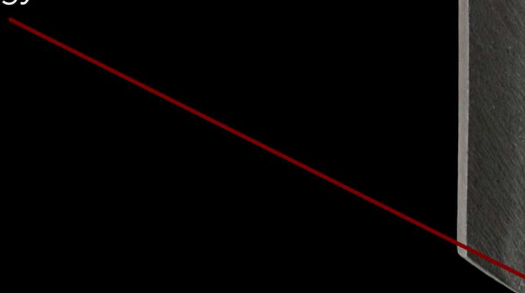
廣 (hiro)

A vertical metal tang, likely made of steel, is shown against a black background. The tang is tapered, being wider at the top and narrowing towards the bottom. Near the top, there is a circular hole. Below the hole, there is a raised, circular crest featuring a chrysanthemum flower design. The surface of the tang has a fine, diagonal texture.

Kiku-mon
(crest of a chrysanthemum)

The *nakago-jiri* (butt-end) of the tang comes to a sharp point at the center.

This type of finish is called *kengyo* or sword-shaped.

A red arrow originates from the text 'This type of finish is called kengyo or sword-shaped.' and points towards the sharp, pointed tip of the metal tang.



As the sword carries the *kiku-mon*, a custom koshirae with *chrysanthemum* themed fittings would be an option to consider building for the sword.

The chrysanthemum flower symbolises the *sun* and the *light*, thus reflecting a sense of immortality.

Please inquire for more information on building a custom koshirae that you and your family can be proud of.

28201511

No 1006724



鑑定書

一刀 銘

備中守橘康広
(菊紋)

長二尺二寸三分

右は當協會に於て審査の結果特別保存刀剣と
鑑定しこれを証する

平成二十九年二月二日

公益財団法人日本美術刀剣保存協會



熊本 教育委員会
第 37882 号
昭和 57 年 6 月 17 日

NBTHK Tokubetsu Hozon Certificate of Designation

A sword designated as *Especially Worthy of Conservation*
by the Society for the Preservation of the Japan Art Sword

Issued in the 29th year of Heisei (2017), February 2nd

One, Katana

Mei (signature)

Bitchû no Kami Tachibana Yasuhiro
(Kikumon)

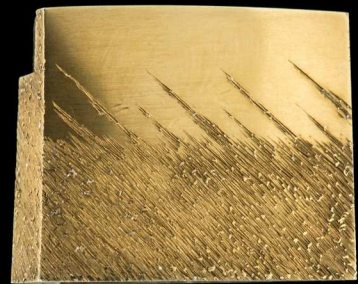
Nagasa (length)

2-shaku 2-sun 3-bu (67.5cm)

Nihon Bijutsu Token Hozon Kyokai
(NBTHK)

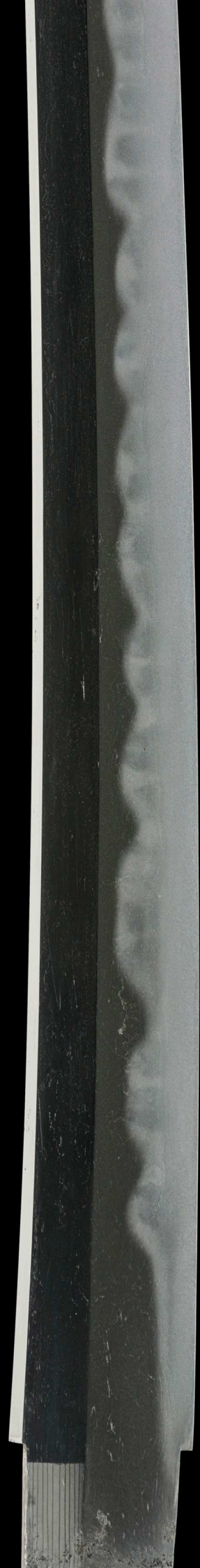


Shirasaya
(protective scabbard)



gold wrapped *habaki*
with diagonal file marks





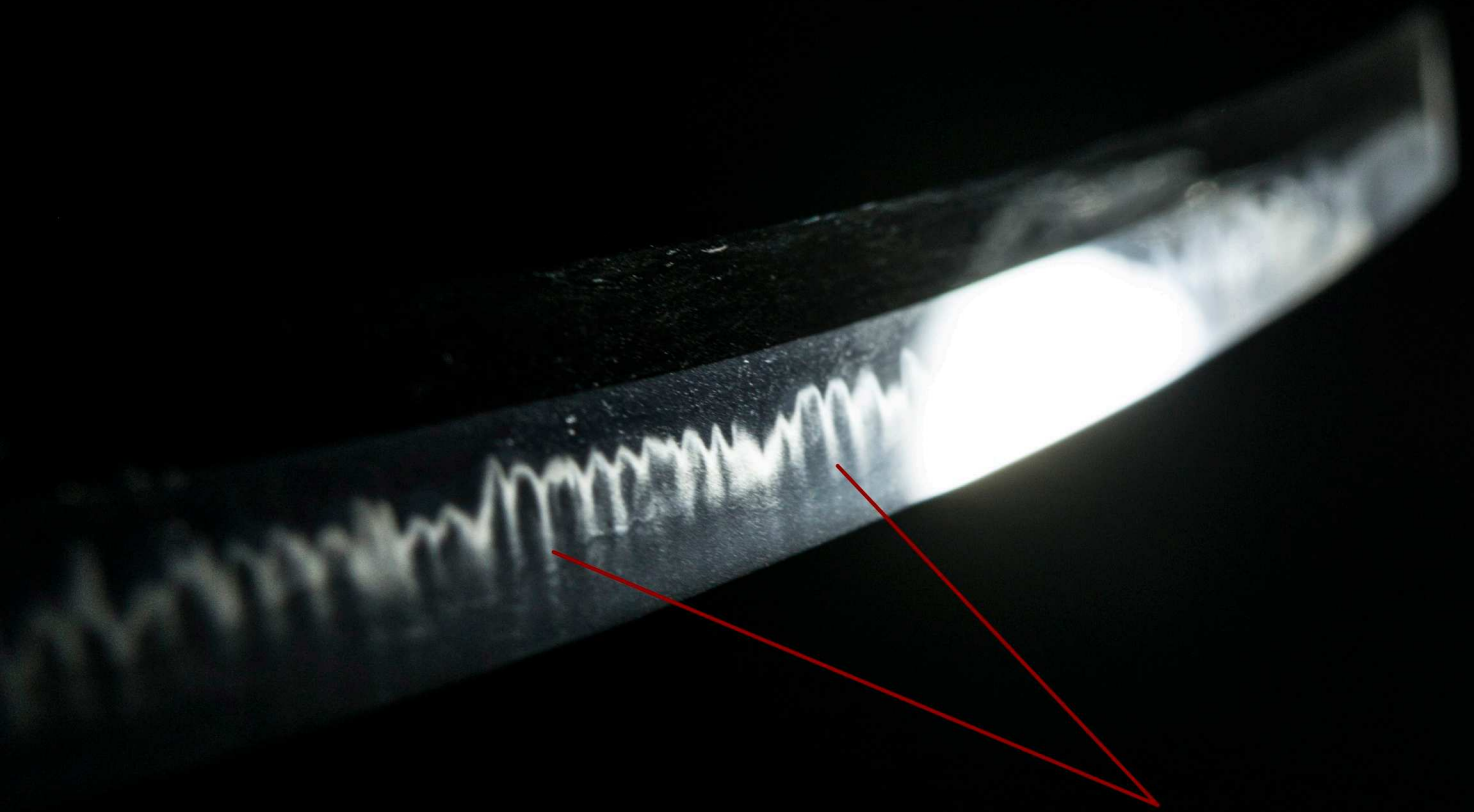
Muneyaki (tempering on the *mune*, spine).

Classic *Bizen chôji*
(clove blossom buds)

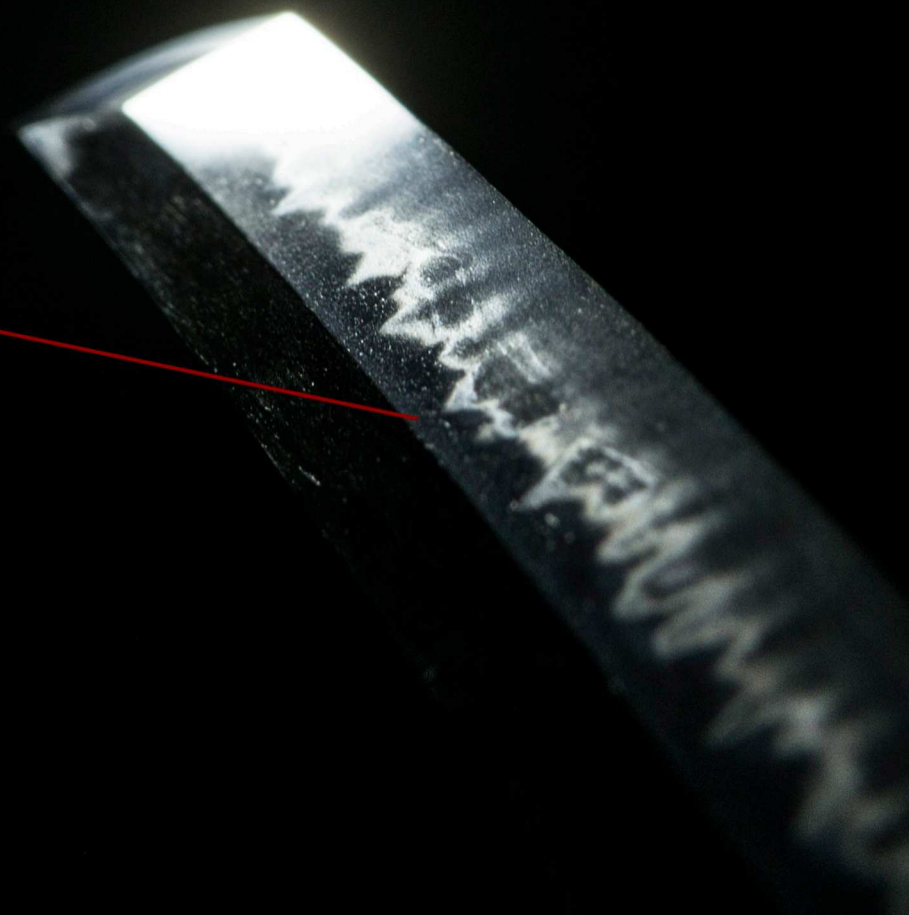




A stellar *gunome-chôji-midare hamon* captivates the eye under the light.



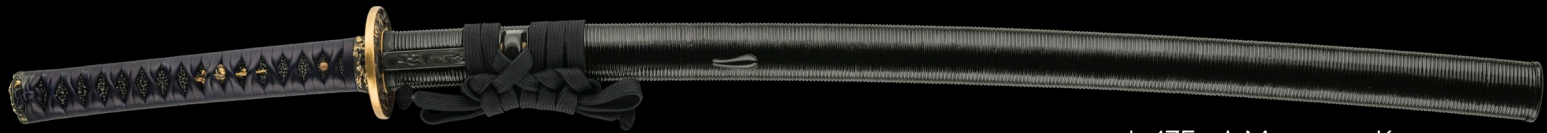
A marvellous cluster of *chōji* with long *ashi* (legs).



Literally meaning "reflection", *utsuri* is a beautiful, rather magical, misty reflection appearing in the *ji* (body) above the *hamon*.

This type of *utsuri* is called *midare-utsuri*. A light, smokey pattern billows in a gentle wavy formation following the hamon pattern.

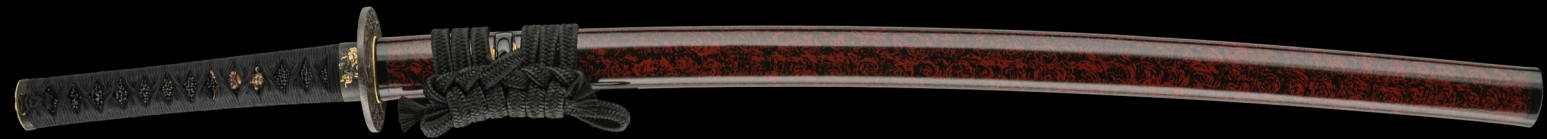
Recently completed custom koshirae projects



ujka175 - A Masatsugu Katana
Traditional *Kizami Uchigatana* Koshirae (3mm tracks)



ujka252 - A Jûyô Hatakeda Sanemori Tachi
Gorgeous *Handachi* Koshirae with deep red ishime finish



ujka322 - A Jûyô Niô School Katana
Benevolent guardian kings theme with zen whirlpool design



ujka350 - A Jûyô Shigezane Katana
Longevity *matsuo* (pine) theme with *Naitô* family *kamon*



ujka291 - A Norikatsu Katana
Long straight grooves celebrating *masame-hada*



ujka275 - A Suketaka Katana
Deep space *aoi-gai* (mother-of-pearl) theme



ujka298 & ujwa191 - A Jûyô Yamato Shizu Daisho
Rising phoenix theme with *Hosofuemaki* (thin strips) lacquerwork



ujka279 & ujwa121 - A Hizen Masahiro/Yukihiko Daisho
Samurai and *Kagura* (dance) theme with rustic iron lacquerwork