



ITEM# UJKA314

## A NOBUTAKA KATANA

SIGNED & DATED, EDO PERIOD (11TH YEAR OF BUNKA, SEPTEMBER 1814)

<b>Swordsmith:</b>	<i>Owari no kuni hachi-dai me Nobutaka (ubu-nakago, eighth generation)</i>
<b>Location:</b>	<i>Owari province (Nagoya)</i>
<b>Measurements:</b>	<b>Length:</b> 71.3cm <b>Curvature:</b> 1.8cm <b>Moto-haba:</b> 2.9cm <b>Weight:</b> 775g
<b>Jihada:</b>	<i>Densely forged ko-itame hada with light shirake utsuri</i>
<b>Hamon:</b>	<i>Chu-suguha with deep kinsuji and nijuba and kuichigaiba</i>
<b>Boshi:</b>	<i>Hakikake (brushed) with ko-maru and long kaeri</i>
<b>Certificate #1:</b>	<b>NBTHK Tokubetsu Hozon</b> (designated as Especially Worthy of Conservation)
<b>Certificate #2-3:</b>	<b>NTHK-NPO Kanteisho</b> (tachi fittings & tsuba designated as Authentic)
<b>Authentication:</b>	<i>Sayagaki by Tanobe Michihiro (Tanzan)</i>
<b>Included:</b>	Shirasaya, Edo tachi koshirae, bags, stand, kit, DVD, booklet, description

**SOLD**

The *Hoki no Kami Nobutaka* school enjoyed the patronage of the *Tokugawa* clan of *Owari* province for an impressive ten successive generations until the end of the Edo period. Born *Shimizu Jinnoshin*, 8th generation Nobutaka was likened to the first three generations in both quality and skill. This katana is a rarity for Nobutaka as it was forged in a bright *suguha*. Bold strokes of *kinsuji* and the presence of *nijuba* pays clear tribute to the classic lines of the Yamato tradition.

A striking *tachi koshirae* with Edo-period fittings in a matching *kiri-mon* theme gives the sword a dignified presence. *Sayagaki* by *Tanobe-sensei* accompanies this collectible *jo-sun katana*.

Saki-kasane: 4.2mm <sup>^</sup>

Kissaki: 3.33cm  
Saki-haba: 1.83cm

Moto-kasane: 7.8mm

Nagasa: 71.3cm

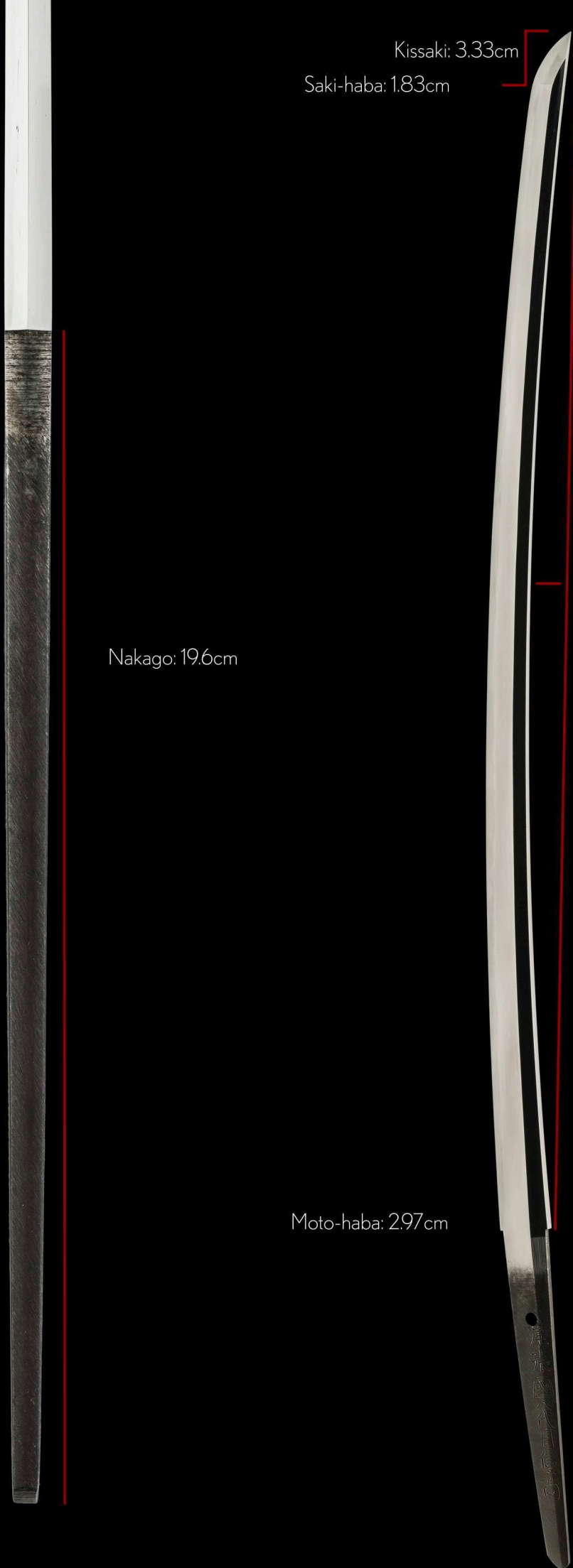
Nakago: 19.6cm

Sori: 1.8cm

Omosa: 775g

Moto-haba: 2.97cm

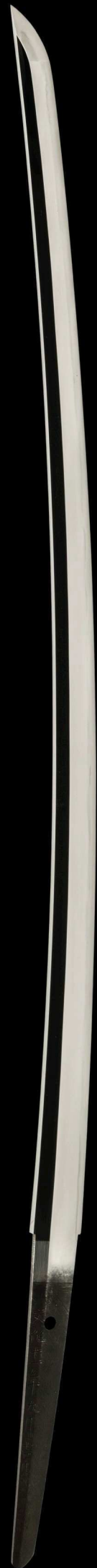
Mekugi-ana: 1



The *Hoki no Kami Nobutaka school* began with the first generation serving the powerful daimyô (feudal lord) *Oda Nobunaga*.

After Nobunaga's death in 1582, the school enjoyed the patronage of the *Tokugawa clan* of *Owari province* for an impressive 10 successive generations until the end of the Edo period.

Born *Shimizu Jinnoshin*, 8th generation Nobutaka was likened to the first three generations in quality and skill.



Location: *Owari* (resident of Aichi-ken)  
Swordsmith: *Nobutaka* (8th generation)

*ubu-nakago* (original, unaltered tang)  
*kesho-yasurime* (decorative file marks)



尾 (O)

張 (wari no)

國 (kuni)

八 (Hachi)

代 (dai)

目 (me)

信 (Nobu)

高 (taka)

*Bunka 11-nen 9-gatsu kichijitsu*

(sword is dated to a lucky day in September 1814)

(Bun) 文

(ka) 化

(jū) 十

(ichi) 一

(nen) 年

(ku) 九

(gatsu) 月

(kichi) 吉

(jitsu) 日



Clear and confident signature by one of the final generation swordsmiths of the proud Nobutaka family lineage.



*hachi-dai*  
8th generation

特 保  
28201611

No 1006495



鑑定書

一 刀 銘  
尾張國八代目信高  
文化十一年九月吉日

長二尺三寸五分強

右は當協會に於て審査の結果特別保存刀剣と  
鑑定しこれを証する

平成二十九年 二月 二 日

公益財団法人 日本美術刀剣保存協會



東京 教育委員会  
第 284939 号  
平成 13 年 / 月 / 6 日

## NBTHK Tokubetsu Hozon Certificate of Designation

A sword designated as *Especially Worthy of Conservation*  
by the Society for the Preservation of the Japan Art Sword

Issued in the 29th year of Heisei (2017), February 2nd

One, Katana

Mei (signature)

*Owari no kuni Hachi-daime Nobutaka  
Bunka 11-nen 9-gatsu kichijitsu*

Nagasa (length)

2-shaku 3-sun 5-bu kyo (a little over 71.2cm)

Nihon Bijutsu Token Hozon Kyokai  
(NBTHK)



This shirasaya has a trusted form of authentication known as *sayagaki* (writing in ink on the shirasaya).

尾張國八代目信高

*Owari no Kuni Hachi-daime Nobutaka [signed]*

Eighth Generation Nobutaka from Owari province

文化十一年紀有之清水甚之進也  
同作中珍敷直刃而  
出来傑レ且資料的価値大也

*Bunka jûichi nenki kore ari Shimizu Jinnoshin nari  
Dôsaku-chû mezurashi suguha shikamo deki sugure  
katsu shiryô-teki kachi dai nari*

Dated with the eleventh year of Bunka (1814). Smith's real name was Shimizu Jinnoshin. The blade is an important reference as it is not only of excellent craftsmanship, but also hardened in suguha, which is rare for this smith.

刃長貳尺參寸五分強有之

*Hachô 2 shaku 3 sun 5 bu kyô kore ari*

Blade length 71.2 cm

壬午曆睦月穀旦

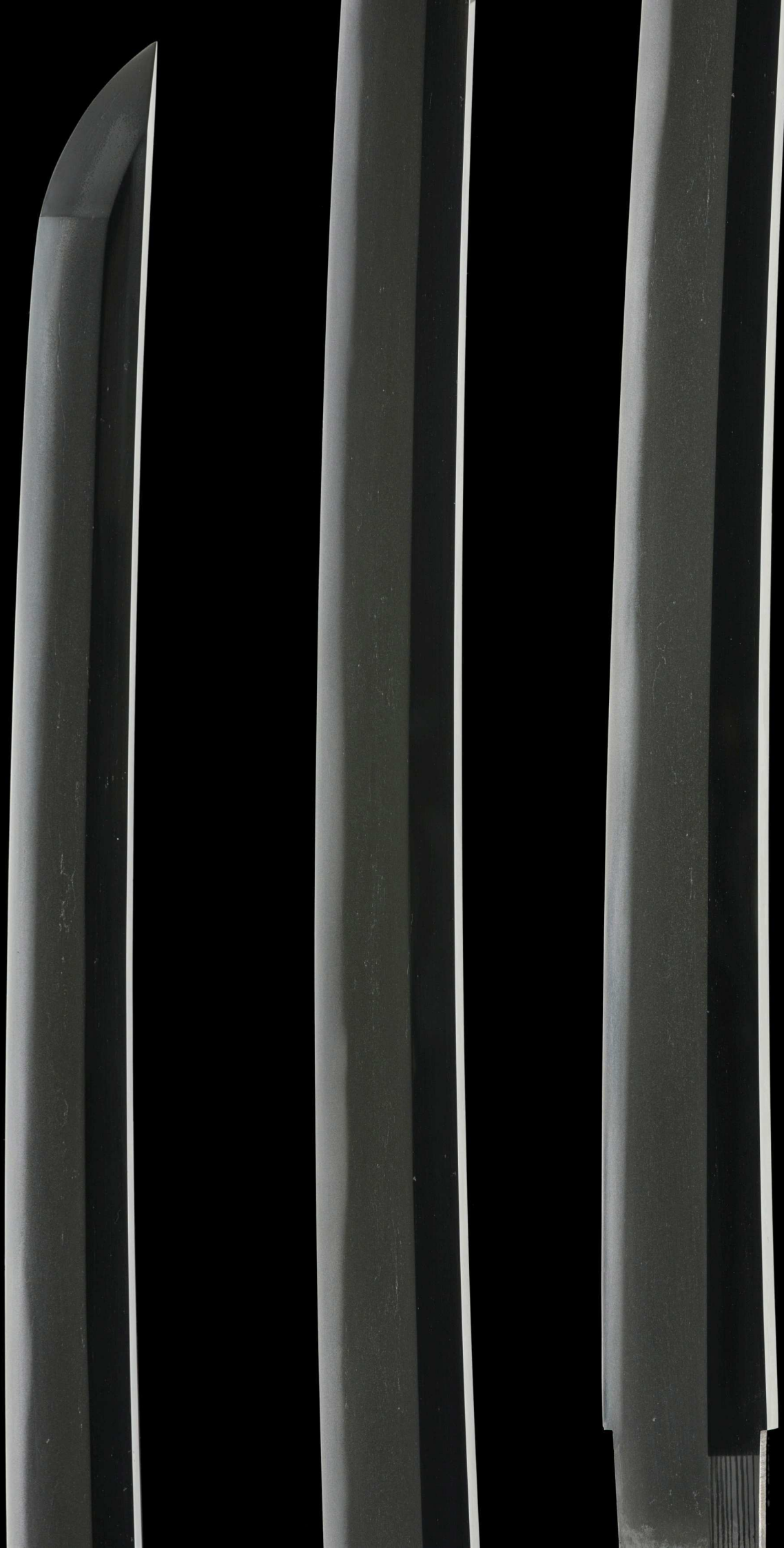
*Mizunoe-umadoshi mutsuki kokutan*

On a lucky day in January of the year of the horse of this era (2002)

邊探山鑒並誌「花押」

*Hen Tazan kangamite narabi ni shirusu + kaô*

Examined and written by Hen Tazan  
[pen name of Tanobe Michihiro] + kaô



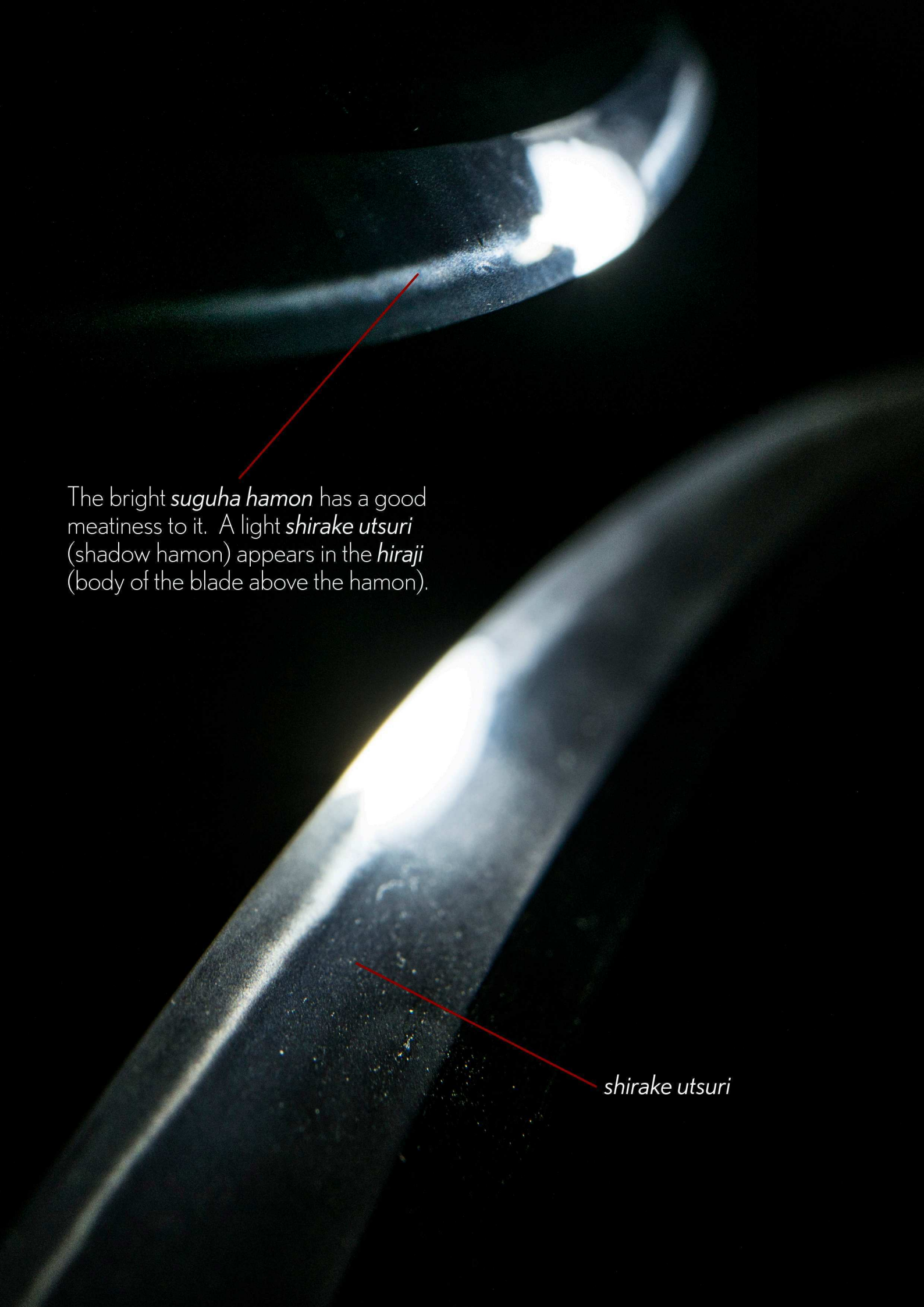




a *komaru boshi* (small circle)  
with a long *kaeri* (return)

a cluster of bright *nie*  
crystals in the *boshi*

*kaeri* returns along the  
*mune* (spine)

A close-up photograph of a sword blade, likely a katana, showing the hamon (temper line). The blade is dark, and the hamon is highlighted by a bright light source. A red line points from the text to a specific section of the hamon. The background is black, making the blade stand out.

The bright *suguha hamon* has a good meatiness to it. A light *shirake utsuri* (shadow hamon) appears in the *hiraji* (body of the blade above the hamon).

*shirake utsuri*

Like strokes of ink from a fountain pen, bold lines of *kinsuji* draw through the *suguha hamon*.

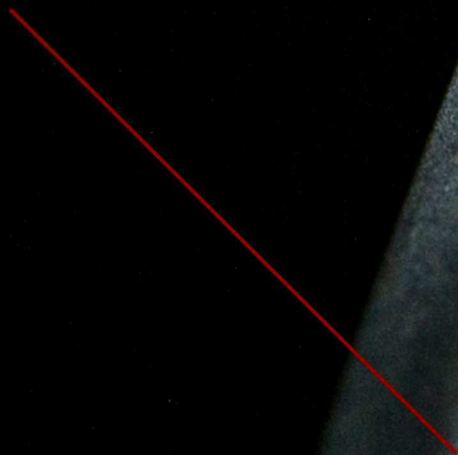




an additional flurry of *kinsuji*

A clear and densely forged *jihada*.  
This is typically seen on later generation swords from the  
*Nobutaka family* of smiths from *Owari province*.

*kuichigai-ba* is the area of the *hamon* where the *nioguchi* splits over a noticeable distance.



*nijubu* - area of the hamon where it splits and runs somewhat parallel. This is a characteristic of blades traditionally forged in the Yamato tradition.





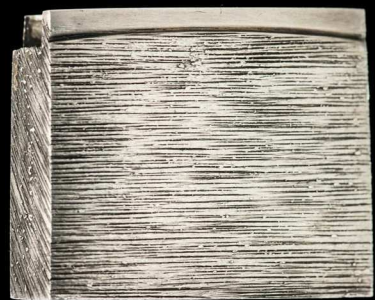
*Shirasaya*  
(protective scabbard)

尾張國八代目信高

文化十二年紀有之清水甚之進也 同作中珍敷直刃而  
以未傑且資料的価値大也

刃長貳尺參寸五分強有之

壬午曆四月段巨  
邊探山鑿並誌  
蘇



silver *habaki* with  
horizontal file marks

*Traditional set of tachi  
koshirae with matching  
Edo period arabesque and  
kiri-mon fittings.*

*A deep vermillion red  
stone-lacquered finish.*

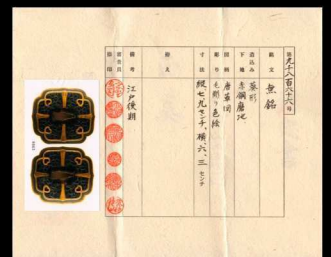




This is a beautiful polished *shakudo tsuba* that was crafted during the late Edo period by the maker of the matching arabesque *tachi* fittings.

It is made of multiple lobed plates measuring 7.9cm in height x 6.3cm in width. A certificate of authenticity by the NTHK-NPO is included with this sword.

The heart-shapes in the corners are called *inome* - meaning the *eye of a wild boar* or *inoshishi*. The *inoshishi* is known for its single-minded focus, which the samurai greatly admired. For when it charges, it never retreats.



NTHK-NPO Kanteisho  
Certificate of Authenticity



*karakusa*  
(arabesque foliage pattern)

This *tsuba* and *semegane* contain the arabesque *karakusa* pattern.

Karakusa symbolizes health and longevity as its vitality strengthens a vine without breaking.



*semegane* (scabbard ring)

Originally the *kiri-mon* (paulownia flower crest/seal) was the private symbol of the Japanese imperial family, from as early as the twelfth century. After the Meiji Restoration in 1868, the seal was eventually adopted as the emblem of the Japanese government.

There are many *kiri-mon* patterns, this particular one is called *maru ni go-san no kiri-mon* - a roundel arrangement of 3-5-3 leaves.

It is found in the emblem of the **Ministry of Justice** and the **Imperial Guard Headquarters**.





*Menuki* (decorative grips on the hilt) also carry *go-san no kiri mon* (paulownia crest).





*kabuto-game* (pommel cap)

Traditional *tachio sageo* knot secured with multiple *kiri-mon* emblems continuing on the *kawasaki-gane*.



A complimentary sword maintenance kit with *mekugi-nuki* and a bottle of *Fujishiro* sword oil (trusted by the Japanese sword museum) is included with all sword purchases.



safe, extra large cloth for adding oil to the blade

## Care and Protection

The maintenance kit also includes a large cloth to comfortably and safely rest the sword when viewing (for hours on end!).

And when the sword is not in hand, watch the **Art of the Japanese Sword DVD** or read the insightful sword picture book from the **All Japan Swordsmith Association** (also included free for clients).



40cm x 40cm cloth  
(in blue and white)