



ITEM# UJKA282

## A KANESHIGE KATANA

SIGNED WITH LOCATION, EARLY EDO PERIOD (KANBUN ERA: 1661-1673)

<b>Swordsmith:</b>	<i>Bushu Ju Kasusa no Suke Fujiwara Kaneshige (2nd generation)</i>
<b>Measurements:</b>	<b>Length:</b> 68.9cm <b>Curvature:</b> 1.2cm <b>Moto-haba:</b> 2.84cm
<b>Jihada:</b>	<i>Tight ko-itame with ji-nie</i>
<b>Hamon:</b>	<i>Thick suguha mixed with gunome-midare with ashi, kinsuji and sunagashi</i>
<b>Certificate #1:</b>	<b>NBTHK Tokubetsu Hozon</b> (designated as Especially Worthy of Preservation)
<b>Certificate #2-4:</b>	<b>NTHK-NPO Kanteisho</b> (a tsuba, kozuka and koshirae designated as Authentic)
<b>Fujishiro rank:</b>	<i>Jo-saku</i> (a superior smith)
<b>Cutting ability:</b>	<i>Ryô-Wazamono</i> (maker of good sharp swords)
<b>Included:</b>	Shirasaya, koshirae, sword fabric bags, sword stand, kit, etc.

This very sharp katana was crafted by *Kasusa no Suke Kaneshige* who studied under his father/*sensei* first generation *Izumi no Kami Kaneshige* that began his career an arrow smith in *Echizen* province before being hired by the *Tôdô daimyô* family as a swordsmith.

*Kasusa Kaneshige's* workmanship has *Soshû-den* qualities; a thick *suguha* base mixed with wavy *gunome* in the style of master *Kotetsu*. The *hamon* shines impressively in the light. Full-length *bohi* (grooves) gives the blade fine balance and quickness. It feels like a swordsman's sword.

A splendid set of decorative *koshirae* with an all-matching *Tokugawa* family crest *aoi-mon* (hollyhock) theme accompanies the katana. The *saya* (scabbard) features a brilliant gold *nashi-ji* texture. The *tsuba* and *kozuka* are particularly impressive, with both being attributed to the famed *Yoshioka* school that were responsible for the fittings of the majority of high-ranking samurai.



Saki-kasane: 3.9mm

Moto-kasane: 6.4mm

Kissaki: 3.59cm

Saki-haba: 1.99cm

Nagasa: 68.9cm

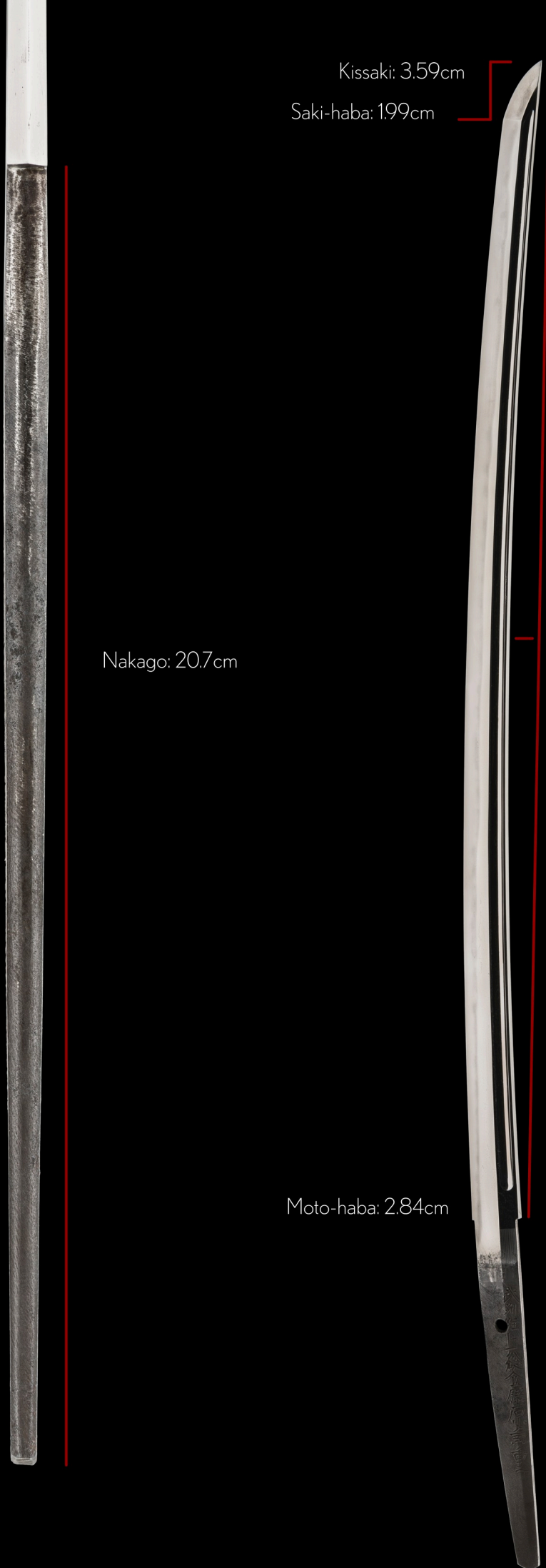
Nakago: 20.7cm

Sori: 1.20cm

Omosa: 635g

Moto-haba: 2.84cm

Mekugi-ana: 1



Kaneshige was born *Tsuji Suke'emon*, son of the 1st gen. Kaneshige. He temporarily worked in *Anotsu* in *Ise* province.

His workmanship is similar to the great *Kotetsu* and it is said that he also matched his signature to that of *Kotetsu*. In this sword we see the influence of *Kotetsu* with a bright, thick *noiguchi* that shines impressively under the light.

Kaneshige was granted the honorary title of *Kazusa no Suke* which was later raised to *Kazusa no Kami*, but there are only a few blades extant which are actually signed with this *mei*.

We know of dated signatures from the eighth year of *Kanbun* (1668) to the fifth year of *Tenna* era (1685). Kaneshige is ranked *ryô-wazamono* for the exceptional sharpness of his swords and overall *jô-saku* - a superior swordsmith.





Location: *Bushû Province*

Title: *Kazusa no Suke* (Lord of Kazusa province)

Clan name: *Fujiwara*

Swordsmith: *Kaneshige* (2nd generation)

*ubu-nakago* (original, unaltered tang)

*kesho-yasurime* (decorative file marks)

武 (Bu)

州 (shû)

住 (jû)

上 (Kazu)

総 (sa, no)

介 (Suke)

藤 (Fuji)

原 (wara)

兼 (Kane)

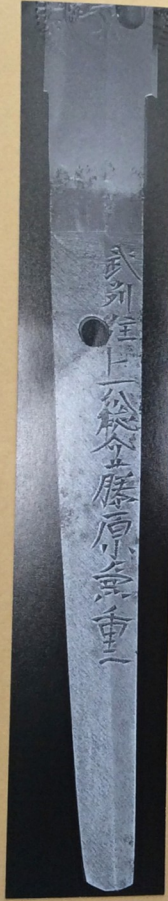
重 (shige)



(*ura*, reverse)

特選  
27201505

No 1003868



鑑定書

一刀

銘 武州住上総介藤原兼重

長 二尺二寸七分半

右は當協會に於て審査の結果特別保存刀剣と  
鑑定しこれを証する

平成二十七年七月十四日

公益財団法人日本美術刀剣保存協會



東京 教育委員会  
第 147749号  
昭和44年 6月26日

## NBTHK Tokubetsu Hozon Certificate of Designation

A sword designated as *Especially Worthy of Conservation*  
by the Society for the Preservation of the Japan Art Sword

Issued in the 27th year of Heisei (2015), July 14th

One, Katana

*Mei* (signature)

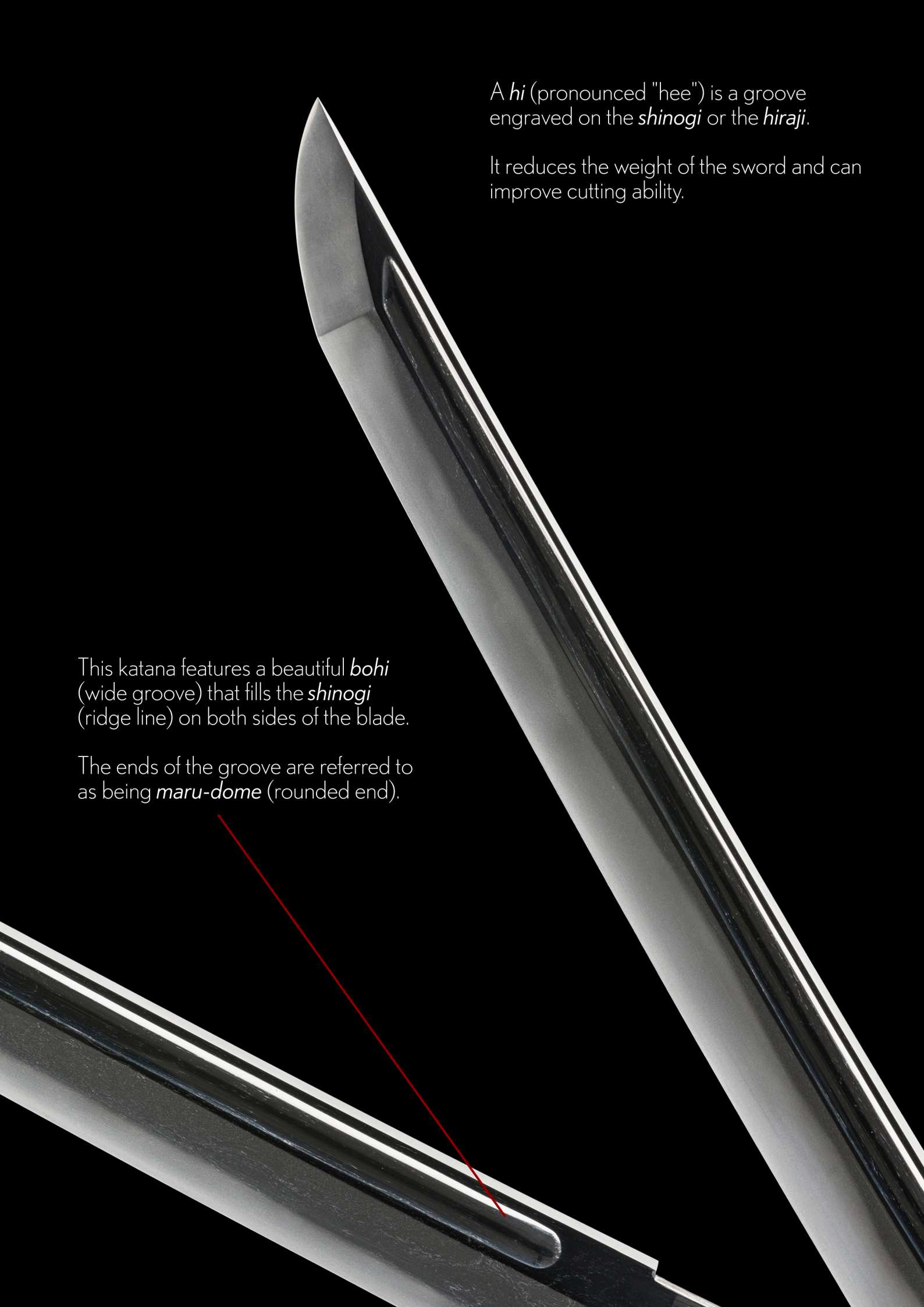
*Bushu Ju Kazusa no Suke Fujiwara Kaneshige*

*Nagasa* (length)  
2-shaku 2-sun 7-bu (68.9cm)

Nihon Bijutsu Token Hozon Kyokai  
(NBTHK)





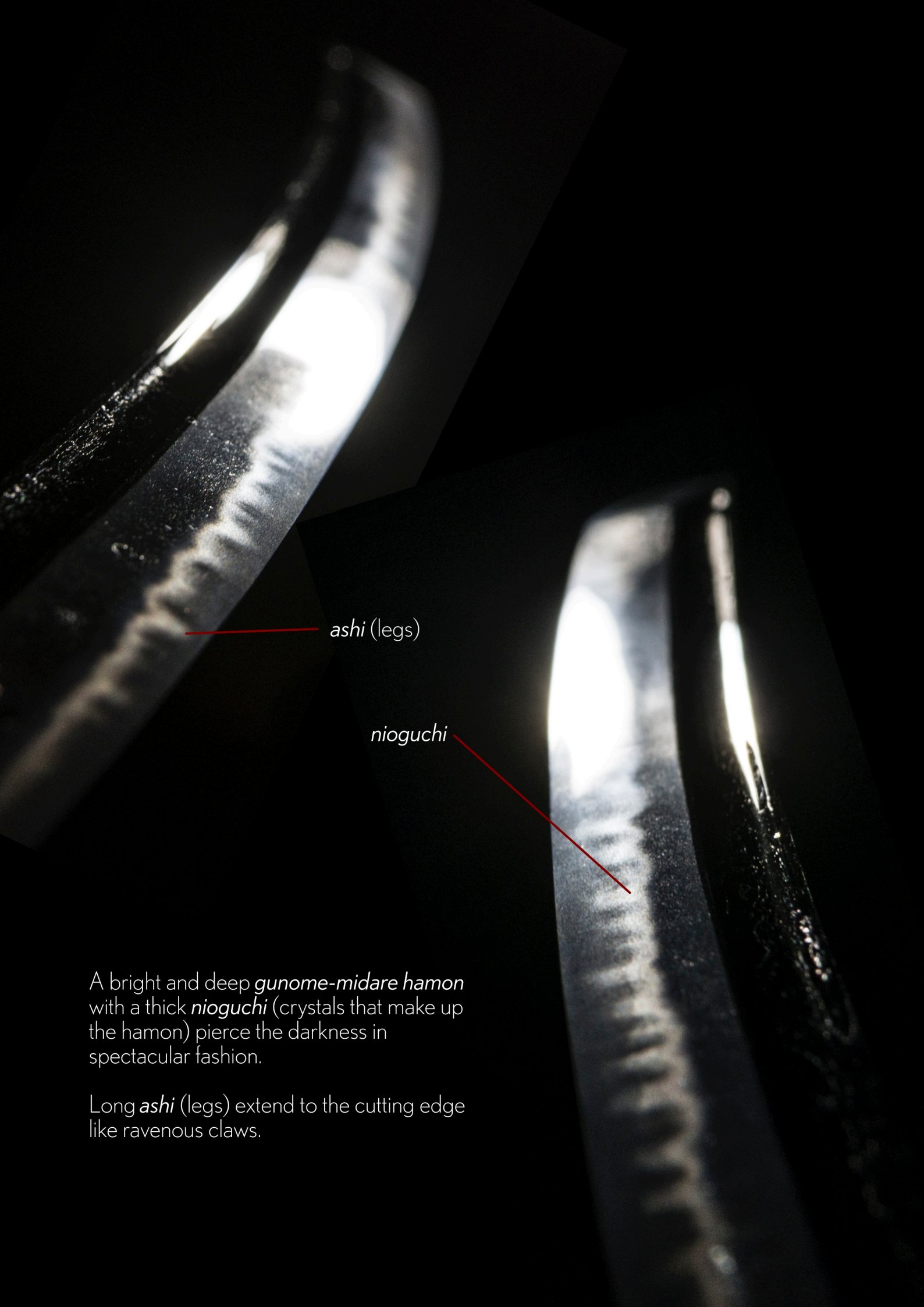


A *hi* (pronounced "hee") is a groove engraved on the *shinogi* or the *hiraji*.

It reduces the weight of the sword and can improve cutting ability.

This katana features a beautiful *bohi* (wide groove) that fills the *shinogi* (ridge line) on both sides of the blade.

The ends of the groove are referred to as being *maru-dome* (rounded end).



*ashi* (legs)

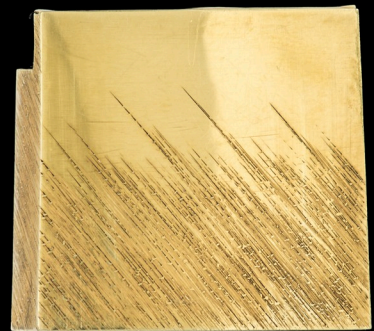
*nioguchi*

A bright and deep *gunome-midare hamon* with a thick *nioguchi* (crystals that make up the hamon) pierce the darkness in spectacular fashion.

Long *ashi* (legs) extend to the cutting edge like ravenous claws.



*Shirasaya*  
(protective scabbard)

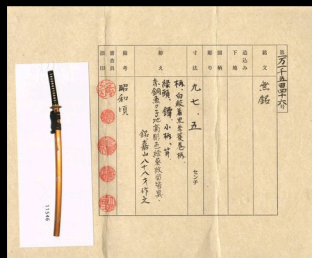


gold *habaki* with  
diagonal file marks

*Aoi no zu kaigu kin-nashi-ji  
kamon maki-e-nuri saya  
uchigatana-koshirae*  
(葵図皆具金梨地家紋蒔絵塗鞘打刀拵え)

*Uchigatana-koshirae  
lacquered in gold nashi-ji texture  
with maki-e and matching set of  
fittings depicting hollyhock crests*

Crafted during the  
Shōwa period  
(1926~1989)



NTHK-NPO Kanteisho  
Certificate of Authenticity



This is a top-class black *shakudo tsuba* with *nakako* ground (dots) that has been attributed to the prestigious *Yoshioka Inaba no suke school*. This school along with the *Gotô* school crafted fittings primarily for high ranking *bushi* (samurai warrior class).

Several *aoi-mon* (hollyhock) adorn the tsuba - the official *kamon* (crest) of the ruling *shogunate*, the Tokugawa family. Note the gold *fukurin* (decorative rim) around the tsuba.

An NTHK-NPO Kanteisho certificate of authenticity attributing the piece to the *Late-Edo period* circa 1780~1867 has been attained.



*Tokugawa Iyasu* (1543-1616)  
First shôgun of the Tokugawa shogunate

The space here is for the thumb to push and separate the sword and hilt from the saya (scabbard).



(reverse)



*Hakuô sai Kazan hachijûhachi sai kore o tsukuru*  
 (Crafted by Hakuô sai Kazan at the age of 88)



(hachi) 八  
 (jû) 十  
 (hachi) 八  
 (sai) 歳  
 (tsukuru) 作  
 (kore) 之

伯 (Haku)  
 翁 (ô)  
 齋 (sai)  
 嘉 (Ka)  
 山 (zan)



Matching *aoi-mon*  
(Tokugawa clan family crest)

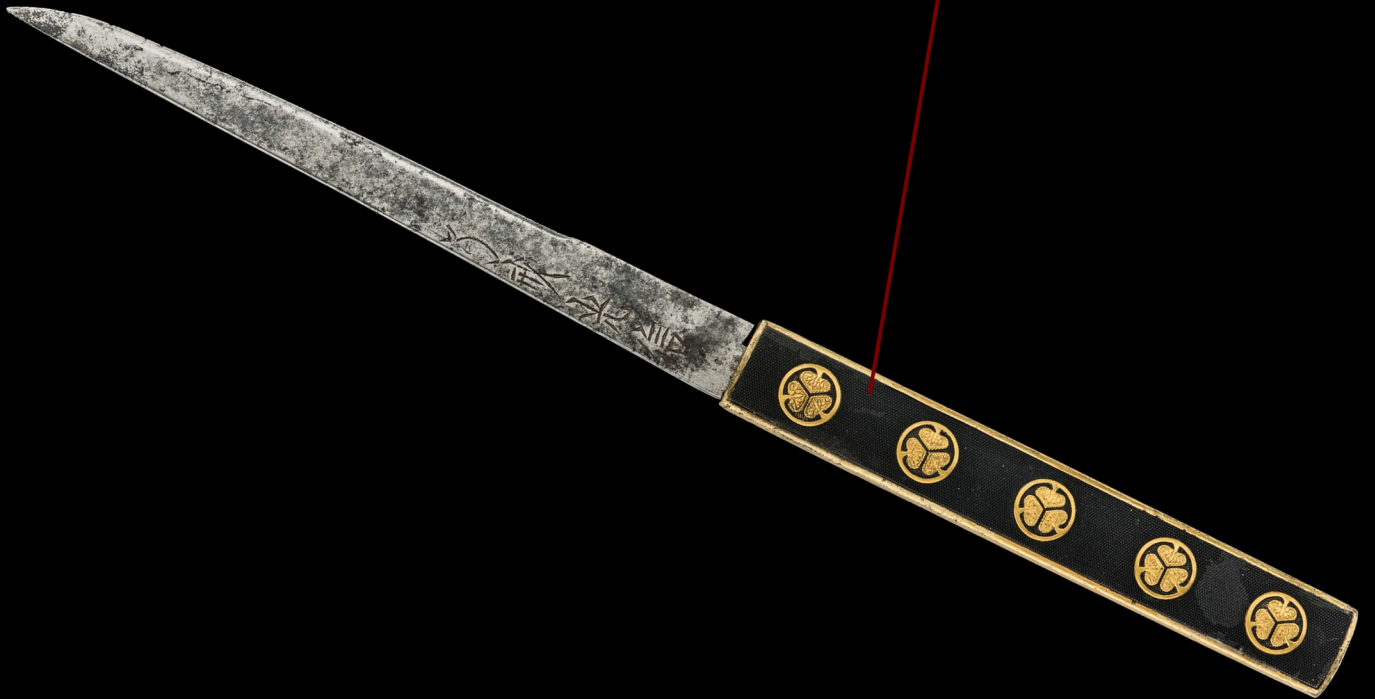




A kogai is a thick blunt needle that was primarily used as a hair arranging tool by the samurai.

It is fastened into a special notch built inside the *saya* (scabbard) and drawn through the 'bumpy' hole in the tsuba.





*kozuka* (utility knife)



上  
総  
介  
兼  
重

上 (Kazu)

総 (sa, no)

介 (Suke)

兼 (Kane)

重 (shige)

