



ITEM# UJKA243

A KUNITSUNE KATANA

SIGNED, EARLY EDO PERIOD (MANJI ERA: 1658-1661)

- Swordsmith:** *Kozuke no Kami Fujiwara Kunitsune*
- Measurements:** **Length:** 67.7cm (ubu) **Curvature:** 1.8cm **Moto-haba:** 3.2cm
- Jihada:** *Itame and masame*
- Hamon:** *Gunome midare with togari, sunagashi and kinsuji*
- Certificate #1:** **NBTHK Tokubetsu Hozon** (a sword designated as Especially Worthy of Preservation by the Society for the Preservation of the Japanese Art Sword)
- Certificate #2-3:** **NTHK-NPO Kanteisho** (a *koshirae* and *tsuba* designated as Authentic by the Society for the Preservation of the Japanese Sword)
- Cutting ability:** **Wazamono** (maker of sharp swords)
- Included:** Shirasaya, Edo *koshirae*, fabric bags, stand, kit, DVD, booklet, description

SOLD

Here's a mighty katana by *wazamono* swordsmith *Kozuke no Kami Kunitsune* who worked during the Manji era circa 1658-1661. Designed with great amount of curvature, this is a sword meant for a warrior to hold comfortably with one or two hands. A bright and consistent *gunome midare hamon* with classic Mino tradition *togari* peaks its way the length of the blade. This is a well-forged sword with particularly beautiful *masame hada* in the *shinogi-ji*.

An Edo period dragon-themed *koshirae* exudes a fighting spirit. Note the imposing crawling dragons for *menuki* wrapped in *katate-maki*. The lacquer on the scabbard is from the 1800s and is aging away in such a way that it appears like molten lava. Look for the hidden dragon within the scabbard! This katana is certified NBTHK Tokubetsu Hozon with certificates for the *koshirae* and a unique early-Edo iron *tsuba* with curled edges by the *Aoki Kanesada* school.

Saki-kasane: 4.8mm [^]

Moto-kasane: 6.9mm

Omosa: 755g

Saki-haba: 2.2cm

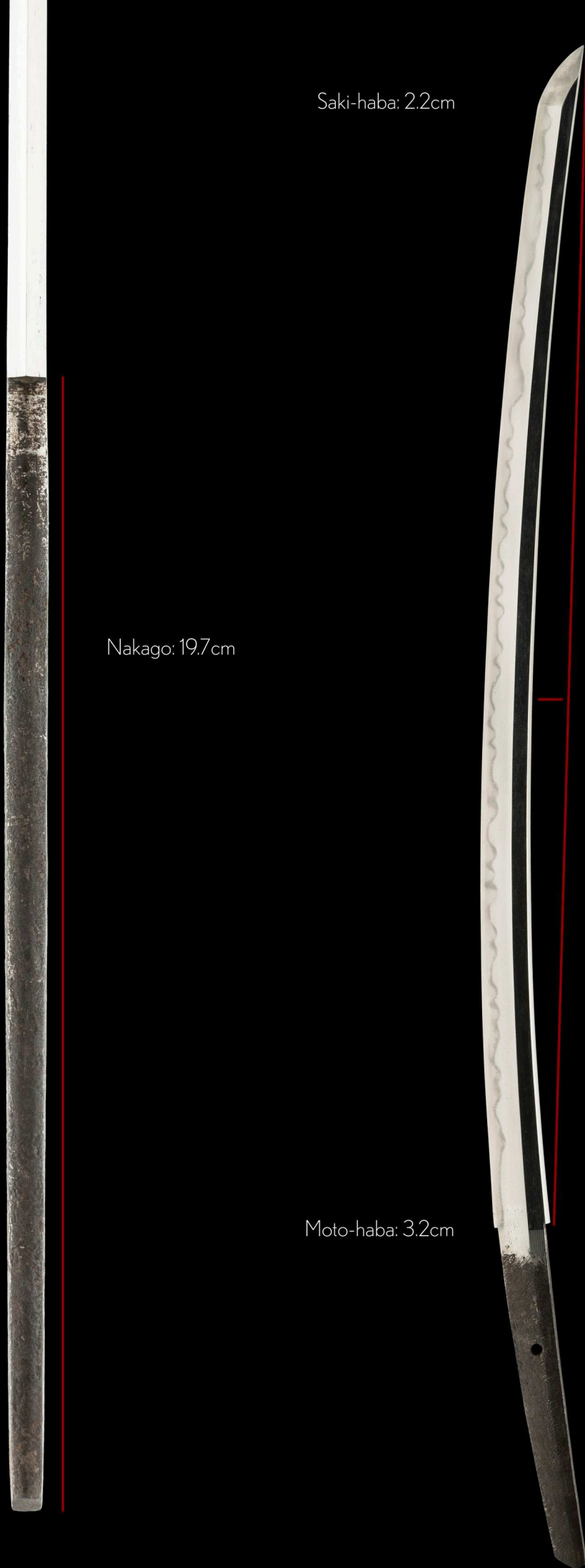
Nakago: 19.7cm

Moto-haba: 3.2cm

Nagasa: 67.7cm

Sori: 1.8cm

Mekugi-ana: 1



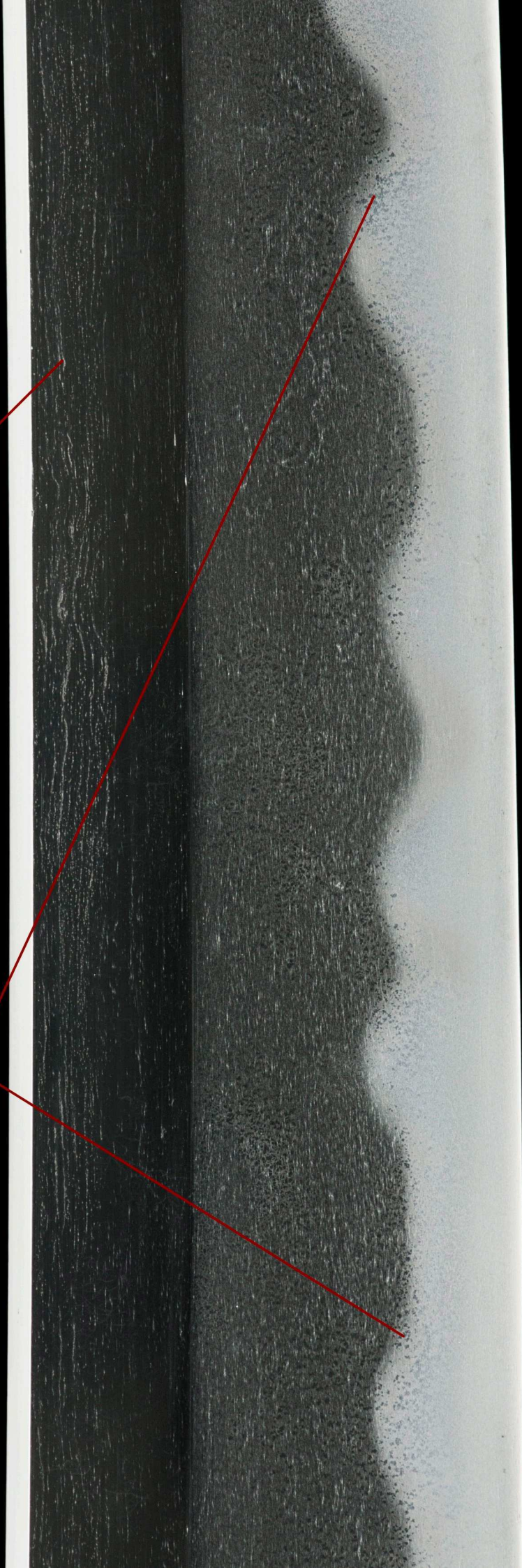


Title: *Kozuke no Kami (Gunma Prefecture)*

Swordsmith: *Fujiwara Kunitsune*



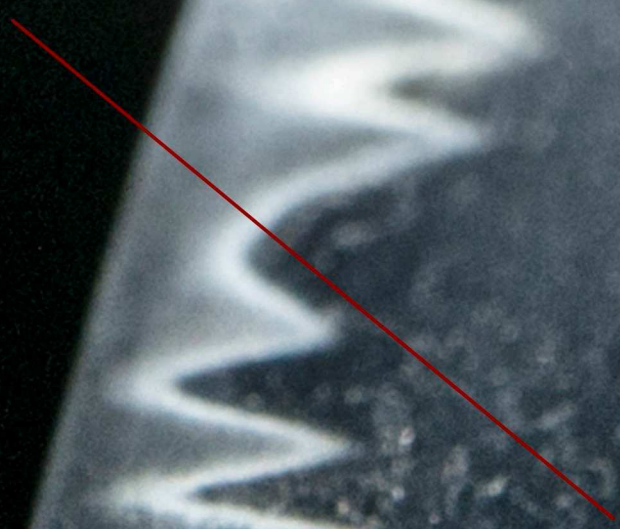
Ko
zuke
(no) kami
Fuji
wara
Kuni
tsune



good flowing *masame-hada*
(straight grain) in the *shinogi-ji*

visible *nie* crystals
penetrate the hamon.

chikei





mune-yaki
(temper along the spine)

A tight *gunome midare hamon*
(temper line with random waves)
with pointed peaks of *togari* slices
its way through the sword.

togari

A close-up photograph of a sword's blade, focusing on the hamon (temper line). The hamon is a light-colored, wavy line that runs along the length of the blade. The peaks of the waves are sharp and pointed, which is characteristic of the 'togari' (pointed) style. Two red lines originate from the word 'togari' in the bottom left and point to two of these sharp peaks. The blade itself is dark and has a slightly curved shape. The background is black.



Shirasaya
(protective scabbard)



Koshi Yujo Yasuri-habaki
(silver)





Tsuba

This large and handsome quince-shaped polished iron guard is specially designed with curled edges.

Looking closely at the design, a boat emerges at the bottom corner while a mountain scene is seen above.

The tsuba is attributed to Yamashiro province *Aoki Kanesada* who worked in the early Edo period, mid 1600's.



This tsuba is certified with NTHK-NPO Kanteisho certification





The lacquered remains of the face of a dragon gazes through the *saya* (scabbard).



Menuki (decorative grips) feature imposing crawling dragons piercing through the silk for an extra tight grip. This wrap is called *katate-maki* - specially designed for one-handed use.





life experience.