



ITEM# UJKA238

A TAKAHIRA KATANA

SIGNED & DATED, EDO PERIOD, 9TH YEAR OF ENPO (AUGUST 1681)

- Swordsmith:** *Kashu Kanazawa Ju Takahira (Denuemon, 2nd generation Takahira)*
- Measurements:** **Length:** 69.7cm **Curvature:** 2.4cm **Moto-haba:** 3.0cm
- Jihada:** *Itame and masame hada (wavy and straight grain) with chikei*
- Hamon:** *Bright gunome midare with good ashi, sunagashi and kinsen*
- Certificate #1:** **NBTHK Tokubetsu Hozon** (a sword designated as Especially Worthy of Preservation by the Society for the Preservation of the Japanese Art Sword)
- Certificate #2:** **NTHK-NPO Yushusaku** (a sword designated as Highly Excellent by the Society for the Preservation of the Japanese Sword)
- Certificate #3:** **NTHK-NPO Kanteisho** (a koshirae designated as Authentic by the Society for the Preservation of the Japanese Sword)
- Fujishiro:** **Chu-Josaku** (ranked as an above average swordsmith)
- Included:** Shirasaya, Edo koshirae, fabric bags, stand, kit, DVD, booklet, description

SOLD

Second generation swordsmith *Takahira (Denuemon)* is from the prestigious *Kanewaka School* from Kaga province that worked closely with the wealthy and powerful Maeda family. This beautiful katana, signed and dated to *August 1681*, radiates a samurai glow. The *hamon* is bright and free-flowing on a clean straight-grain *masame hada* that requires great skill and precision.

Quite remarkably, it's splendid battle-ready *koshirae* with a traditional crisscross grooved *Kaga habaki* has been preserved for well over 250 years, making it likely to be the original *koshirae* to the sword itself. Certification includes NBTHK Tokubetsu Hozon and NTHK-NPO Yushusaku.

Saki-kasane: 4.6mm



Moto-kasane: 6.4mm

Saki-haba: 2.1cm

Nagasa: 69.7cm

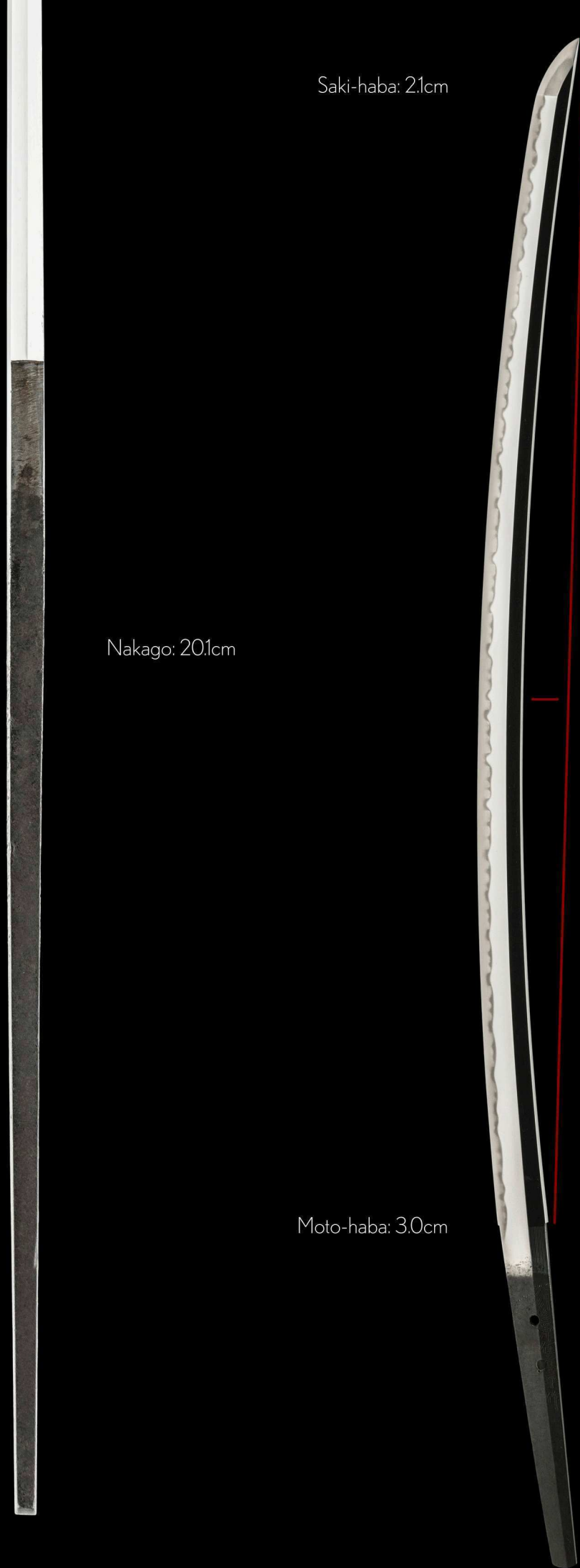
Nakago: 20.1cm

Sori: 2.4cm

Omosa: 680g

Moto-haba: 3.0cm

Mekugi-ana: 2





Province: *Kashu* (Ishikawa Prefecture)

City: *Kanazawa*

Swordsmith: *Takahira*

Swordsmith Takahira crafted this sword while living in Kanazawa city in Kashu (Kaga) province.

Ka

shu

Kana

zawa

ju

Taka

hira

saku



Enpo 9-nen 8-gatsu Kichi-jitsu

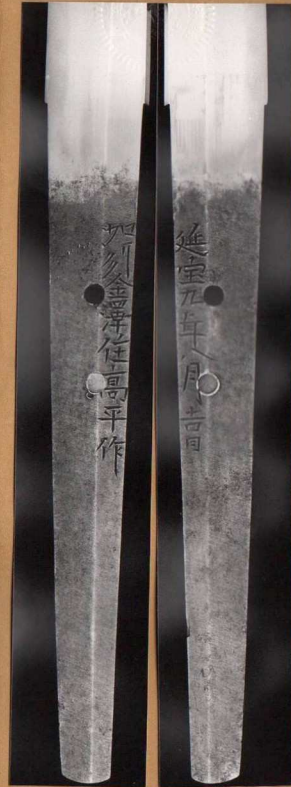
This katana was dated on a good day in
the 8th month of the 9th year of Enpo era
(August 1681)

En
po
9
nen
8
gatsu
Kichi
jitsu



16200411

No 149909



鑑定書
長 二尺三寸弱
一刃 銘 加洲金澤住高平作(伝右衛門)
延宝九年八月吉日
右は當協會に於て審査の結果特別保存刀剣と
鑑定しこれを証する
平成十六年十二月三十七日
財団法人日本美術刀剣保存協會

NBTHK Tokubetsu Hozon Certificate of Designation

A sword designated as *Especially Worthy of Conservation*
by the Society for the Preservation of the Japan Art Sword

Issued in the 16th year of Heisei (2004), December 27th

One, Katana

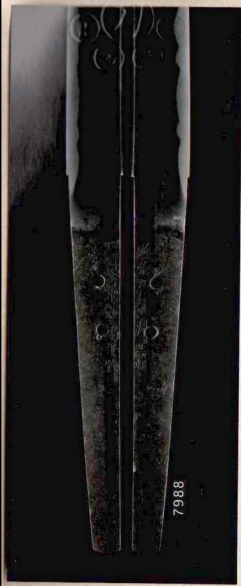
Mei (signature)

Kashu Kanazawa ju Takahira Saku (Den Uemon)

Enpo 9-nen 8-gatsu Kichijitsu
(dated on a good day in August 1681)

Nagasa (length)
2-shaku 3-sun (69.7cm)

Nihon Bijutsu Token Hozon Kyokai
(NBTHK)



捺 査 印 員	備 考	寸 法	拵 え	中 心	園 形 柄 り	銚 子	刃 紋	下 地	鍛	造 り 込 み	銘 文	第 七 九 八 号
				目釘穴 二 個 一 分 埋 れ 鈍 浅 心 勝 手 下 拵		直 ぐ 小 丸	箱 刃 小 丸 一 目 止 り 乱 水 連 子 刃 中 小 五 角 文 子 足 子		板 白 磁 心	錦 造 子 卷 棟	加 州 金 沢 任 高 平 作 延 享 九 年 八 月 基 地 日	

NTHK-NPO Yushusaku Certificate of Designation

(a sword designated as *Highly Excellent* by the
Society for the Preservation of the Japanese Sword)

Issued in the 28th year of Heisei (2016), December 18th

One, Katana

Mei (signature)

Kashu Kanazawa Ju Takahira Saku

Enpo 9-nen 8-gatsu kichijitsu


(dated on a good day in August 1681)

Nagasa (length)

2-shaku 3-sun (69.7cm)

Nihon Token Hozon Kai
(NTHK-NPO)

**This certificate is the highest level of honour at the NTHK-NPO

A close-up, diagonal view of a sword blade against a black background. The blade's surface is highly reflective, showing a fine, straight grain pattern (masame hada) and wavy, shimmering lines of nie crystals (chikei). A thin red vertical line is drawn on the blade to highlight a specific section.

Beautiful *masame hada* (straight grain)
with lines of *chikei* (nie crystals).





Maeda Toshitsune
(1593-1658)

First generation Kanewaka School swordsmith *Jinroku Kanewaka* was offered the head position in Kaga Domain by the third head daimyo leader Maeda Toshitsune.

Kanewaka then moved to Kaga from Mino province between 10th-11th year of Keicho (1605-1606). He first signed *Echu no Kami* and changed his smith name to *Takahira* in the the 5th year of Genna era (1619). He died in 5th Kan'ei, 1628


His work was so highly regarded that he earned the nickname *Kaga Masamune*. Eventually, his success resulted in blades that were very expensive to acquire.

There was even a saying: "Samurai who want a Kanewaka [sword] have to spend so much money that they even have to sell their daughters!"

A close-up photograph of a sword's hamon, showing a bright, wavy pattern of light and dark bands. The pattern is consistent and wavy, with long, thin extensions (ashis) reaching towards the edge of the blade. The background is dark, making the bright hamon stand out.

A bright and consistent wavy
gunome midare hamon.

Notice the long *ashi* (legs)
extending to the sword's edge.

A red arrow originates from the text and points to the long, thin extensions (ashis) of the hamon pattern.



Dedication.

Concentration.

Inspiration.



Shirasaya
(protective scabbard)



Kashu-habaki
(silver habaki made in
the Kaga design tradition)



This rare set of *koshirae* (mounts) has a certificate of authenticity dating it to the middle Edo period, circa late 1600s to middle 1700s.

As the sword is dated to 1681, the fittings could be the original set to when the sword was first crafted.

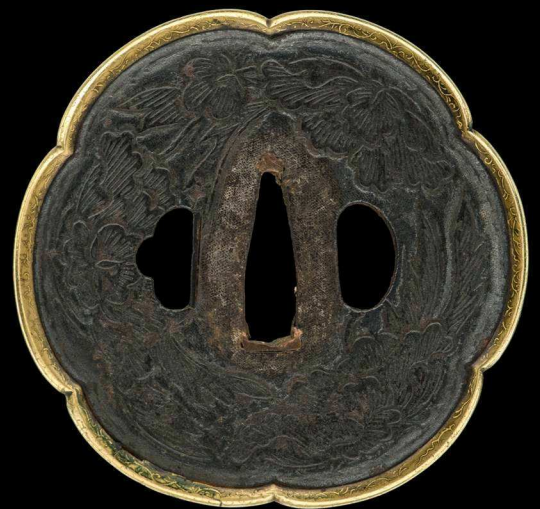


Tsuba

A splendid polished iron tsuba in the shape of a quince flower. It features a brass *mimi* (rim) that is engraved with a detailed vine pattern.

A beautiful peony design (known as the king of flowers) is elegantly carved into the body of the tsuba. This is a fine representation of understated samurai elegance. To appreciate such handcrafted art work requires a moment of pause and inner reflection.

This tsuba was crafted during the Edo period.



reverse



A solitary silver butterfly floats on the iron fuchi...

Freedom.



The *kashira* (pommel) carries a *botan* (peony).
The peony is referred to as the "King of Flowers" in Japan.
There appears to be a gold crown on the top of the peony.



Gold shisa lions on the *menuki* guard the sword with all their might.





A solid iron *kojiri* (end cap) reinforces the *saya* (scabbard).

The kojiri provides the samurai with an additional weapon to defend himself without necessarily drawing the sword.



The black *samekawa* (ray skin) on the hilt gives better grip for the samurai, especially in the rain. It also camouflages spilt blood better than white ray skin.

This is an authentic, no-nonsense battle-ready koshirae from the Edo period.