



ITEM# UJFK087

A NARA SHÔKI FUCHI-KASHIRA

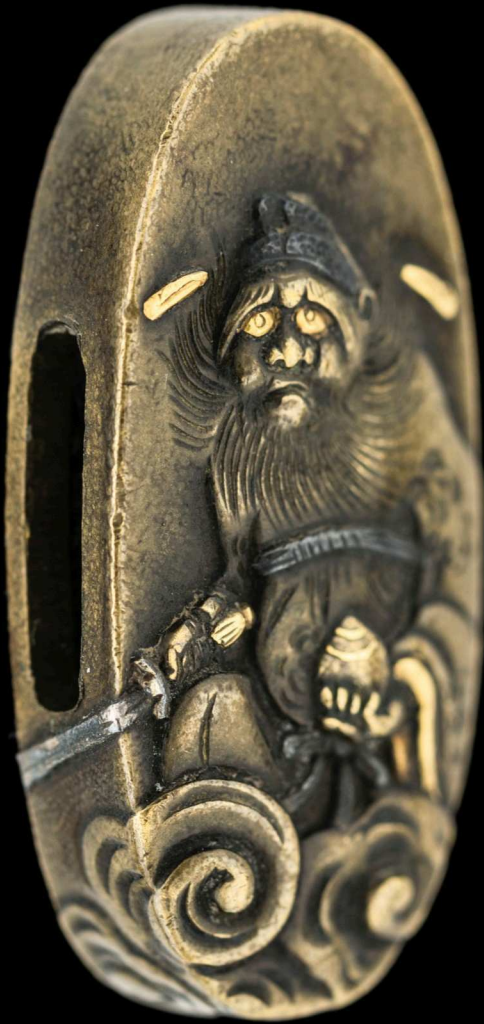
UNSIGNED, MID-EDO PERIOD (CIRCA 1750~1780)

Metalsmith:	<i>Nara School (Tsuchiya Yasuari attributed by the NTHK-NPO)</i>
Location:	<i>Edo province (present-day Tokyo)</i>
Measurements:	Height: 3.8cm Width: 2.2cm
Material:	<i>Brass with stone-like surface finish</i>
Design:	<i>Motif of Taoist Shôki 'The Demon Slayer' and hiding demons</i>
Engraving:	<i>High relief, inlay and colour accents</i>
Certificate #1:	NBTHK Hozon (a fuchi-kashira designated as Worthy of Conservation)
Certificate #2:	NTHK-NPO Kanteisho (a fuchi-kashira designated as authentic)
Included:	Fuchi-kashira box and printed description

SOLD

Crafted in the mid-Edo period by the *Nara school*, this brilliant *fuchi-kashira* depicts very anxious demons hiding from *Shôki*, the sword-wielding demon slayer. The expressions are so life-like! To this day in Japan, many homes have an effigy of *Shôki* to ward off evil spirits and illness.

As this *fuchi-kashira* has the same *Taoist* origins as the *ujtu116 Ryoka Tieguai tsuba* along with the fact they were both created by *Nara school* and collectively have a material of brass with stone surface finish, a preference will be granted to the client who acquires both these fittings as a set.



Shôki 'The Demon Queller' was a Tang-era physician in the Chinese province of Shensi, but he was very ugly. To advance his career, he took the national examination to enter imperial service, and performed brilliantly, scoring first place among all applicants.

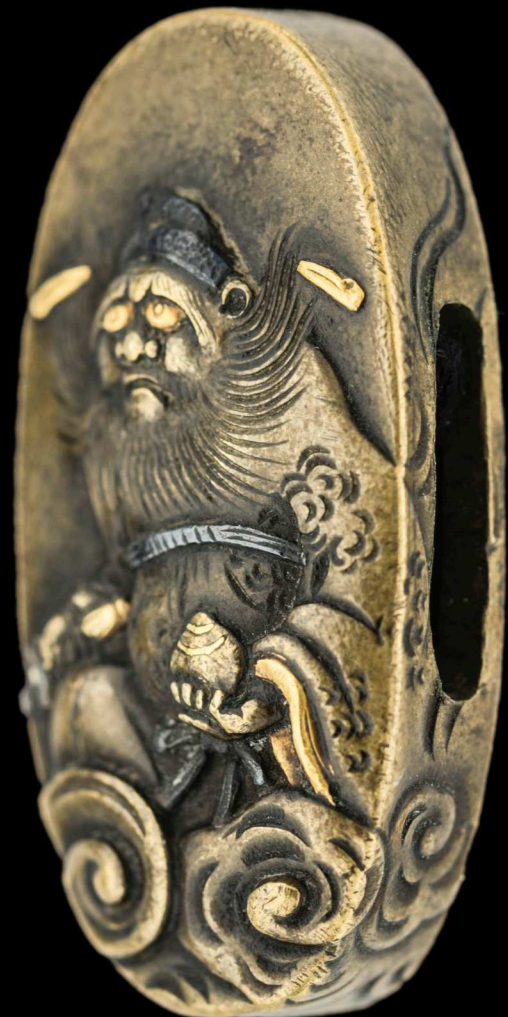
But when *Shôki* was presented to the emperor, he was rejected because of his ugliness, and in shame, *Shôki* committed suicide. Overcome with remorse, the emperor ordered *Shôki* to be buried in the green robe reserved for the imperial clan.

In gratitude, *Shôki*'s spirit vowed to protect the ruler and all male heirs from demons of illness and evil. He is often depicted drawing a large sword or using it in battle with demons.

Shôki's popularity peaked in Japan during the Edo period, when people began to hang images of *Shôki* outside their houses to ward off evil spirits during the Boys' Day festival (May 5th each year, but now a festival for all children of both sexes) and to adorn the eaves and entrances of their homes with ceramic statues of the deity.

Today, residents still adorn the eaves and rooftops of their homes with *Shôki*'s effigy to ward off evil and illness, and to protect the male heir to the family.

Source: onmarkproductions.com/html/shoki.shtml





The *fuchi-kashira* is unsigned and attributed to the *Nara [Tsuchiya Yasuari] school*.

30201810

No 4014549



鑑定書

一、鍾馗隱鬼図縁頭 無銘 奈良派

真鍮石目地 鋤出高彫
象嵌色絵

右は當協會に於て審査の結果保存刀装具と
鑑定しこれを証する

平成三十年十一月十六日

公益財団法人日本美術刀剣保存協會



NBTHK Hozon Certificate of Designation

A tsuba designated as *Worthy of Conservation*
by the Society for the Preservation of the Japan Art Sword

Issued in the 30th year of Heisei (2018), November 16th

One, Fuchi-Kashira (unsigned)

Depicting Shôki and hiding demons

Unsigned

*Brass, stone like surface finish, high relief,
inlay, and colour accents*

Nihon Bijutsu Token Hozon Kyokai
(NBTHK)

捺 審 査 員 印	備 考	拵 え	寸 法	彫 り	図 柄	下 造 込 み 地	銘 文	第 九 千 百 一 号
	江戸中期		縁綻三ハセンチ横、二ニセンチ	高彫	鐘馗に鬼図	縁頭 真鍮磨地	無銘	

NTHK-NPO Kanteisho Certificate of Authenticity

This *fuchi-kashira* was designated as *Authentic*
by the Non-Profit Society for the Preservation of the Japanese Sword

One, Fuchi-kashira

Den Edo Tsuchiya Yasuari
[Nara school]

Crafted circa *Mid-Edo period*
(1700-1780)

Shinsa judging panel:
six hanko seals of authenticity

Issued in 30th year of Heisei (2018), May 20th

Nihon Token Hozon Kai
(NTHK-NPO)



捺 審 査 員 印	備 考	拵 え	寸 法	彫 り	図 柄	下 造 込 み 地	銘 文	第 九 千 百 一 号
	江戸中期		縁綻三、八センチ横、二、二センチ	高彫	鐘馗に鬼面	縁頭 真鍮磨地	無銘	

NTHK-NPO Kanteisho Certificate of Authenticity

This *fuchi-kashira* was designated as *Authentic*
by the Non-Profit Society for the Preservation of the Japanese Sword

One, Fuchi-kashira

Den Edo Tsuchiya Yasuari
[Nara school]

Crafted circa *Mid-Edo period*
(1700-1780)

Shinsa judging panel:
six hanko seals of authenticity

Issued in 30th year of Heisei (2018), May 20th

Nihon Token Hozon Kai
(NTHK-NPO)



(presentation box)



Is that...Shôki?



Flying into Japan?

If you are travelling to Tokyo and are serious about acquiring an authentic Japanese sword, be sure to book a **private meeting** with us in advance.

Many swords from Unique Japan are sold privately every year to proud clients around the world. Contact service@uniquejapan.com where we'll discuss the type of sword, age and other special qualities you are seeking along with budget parameters.

Meetings are held at our studio near JR Ebisu station - only minutes away from all major hotels in downtown Tokyo.