



ITEM# UJDI009

## A SANDAI YASUTSUGU DAISHO

SIGNED, EARLY EDO PERIOD, KANBUN ERA (1661-1673)

KATANA (DAI)

**Swordsmith:** (Aoi-mon) Yasutsugu Echizen ni oite kore o tsukuru (3rd generation, Echizen)

**Measurements:** Length: 75.9cm (ubu) Curvature: 1.5cm Moto-haba: 3.11cm

WAKIZASHI (SHO)

**Swordsmith:** (Aoi-mon) Yasutsugu Namban-tetsu o motte (3rd generation, Edo)

**Measurements:** Length: 54.0cm (ubu) Curvature: 0.6cm Moto-haba: 2.91cm

**Certificates x 2:** NBTHK Tokubetsu Hozon (designated as Especially Worthy of Preservation)

**Certificates x 2:** NBTHK Hozon (menuki designated as Worthy of Preservation)

**Certificates x 3:** NTHK-NPO Kanteisho (tsubas, FK and koshirae designated as Authentic)

**Authenticity:** Sayagaki by Tanobe sensei (former director of the NBTHK, on katana)

**Fujishiro:** Jô-saku & Chujô-saku (ranked as superior and above average swordsmith)

The much-acclaimed Yasutsugu lineage starts with the birth of the first generation, *Ichizaemon*, in *Shimosaka Shiga-gun* in *Omi province* during the middle of the 16th century. Born into a sword-making family headed by Yasutsugu's father, *Hironaga*, was reputed to be the last descendent of *Yamato no Kuni Senjuin*, by way of *Nara*. Though his father was from *Omi*, he was trained in the *Mino* tradition. *Omi* neighbors *Mino* province.

Throughout the history of Japan, a great number of swordsmiths flourished when they came under the patronage and protection of the local feudal lords. Yasutsugu (first generation) was one such swordsmith.

Whether by chance or intent, he became noticed and supported by *Matsudaira Hideyasu*, who was the third son of *Tokugawa Ieyasu* (the first shogun of the Edo period, pictured on right).



Hideyasu was the *daimyo* (great family) of Echizen province. His power and influence bolstered the fame of Yasutsugu considerably.

By the fifth year of Keicho (1600) Yasutsugu was well established in Echizen. His patronage by Hideyasu secured his livelihood and allowed him the freedom to produce swords in a variety of styles.

Around the 11th or 12th year of this same period of Keicho (1606-1607), Yasutsugu's fame reached the point that he was called to *Edo* (Tokyo) to share his time with Tokugawa Ieyasu.

Not long after Yasutsugu was given the privilege of using the kanji character *Yasu* (康) from Tokugawa Ieyasu's name. Thus he changed his name to *Yasutsugu* from that point on.



An additional privilege followed whereby the carving the *Aoi Mon* (hollyhock crest) on his blades was granted. These privileges were given in perpetuity to Yasutsugu and his descendants.

Yasutsugu swordsmiths thus became the *kaji* (official smiths) of the Tokugawa Family. Upon the death of the first generation Yasutsugu, the family responsibility was taken up by his son, *Ichinojo*.

His original signature was *Yoshisuye* and it was officially changed to *Yasutsugu* in the ninth year of Genna (1623). It was at that time that he received the official *shogunate* order to move to Edo on a permanent basis. Two years after his father's death.

*Nidai* (2nd generation) Yasutsugu made swords only until the second year of Shoho (1645) and he died on February 15 of the third year of that same era (1646). His death caused a rift in the family that was solved in a most interesting way...

At the time of the death of the *Nidai Yasutsugu*, his son, first called *Umanosuke* and later *Ichinojo*, was too young to assume the succession. Despite this fact, he was supported by the students of the *Nidai* and the Shogun's Arms Office.

His succession was opposed by the younger brother of the *Nidai*, who was the third son of the *Shodai Yasutsugu*. His name was *Shirouemon* later *Ichiuemon*, who lived and worked in Echizen. In the end, it was decided that there would be *two Sandai* (3rd generation) Yasutsugus.

*Umanosuke* would assume his father's mantle and become the third generation Yasutsugu working permanently in Edo, maker of this katana, while *Shirouemon* would remain in Echizen and become the Echizen third generation.

From this point onward the Yasutsugu lineage of swordsmiths was split into two distinct branches, the *Edo branch* and the *Echizen branch*. This daisho represents the unique tangible turning point within the school's history that can be appreciated in hand and spirit. The two divisions of the Yasutsugu school continued for several generations. The Edo school was sustained through eleven generations.



Omosa: 820g

Kissaki: 3.31cm

Saki-haba: 1.99cm

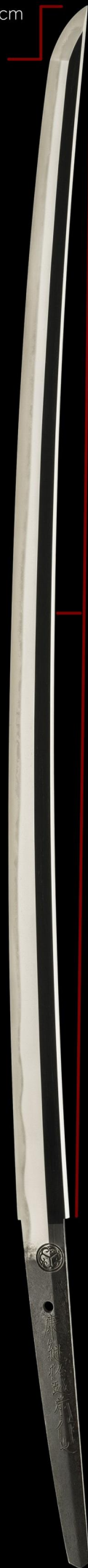


Saki-kasane: 4.1mm

Moto-kasane: 6.8mm

Nakago: 21.5cm

Moto-haba: 3.11cm



Nagasa: 75.9cm

Sori: 1.50cm

Mekugi-ana: 1





Kissaki: 3.04cm

Saki-haba: 1.93cm



Saki-kasane: 4.4mm

Moto-kasane: 6.3mm

Nagasa: 54.0cm

Nakago: 15.2cm

Sori: 0.60cm

Omosa: 540g

Moto-haba: 2.91cm

Mekugi-ana: 1





(Yasu) 康

(tsugu) 繼

(motte) 以

(Nam) 南

(ban) 蛮

(tetsu) 鐵

(Hollyhock crest)

康 (Yasu)

繼 (tsugu)

於 (oite)

越 (Echi)

前 (zen)

作 (tsukuru)

之 (kore (o))

*Bushû Edo ni oite kore o tsukuru*  
Crafted in Edo in Bushû province  
(wakizashi)

(Oite) 於

(Bu) 武

(shû) 州

(E) 江

(do) 戶

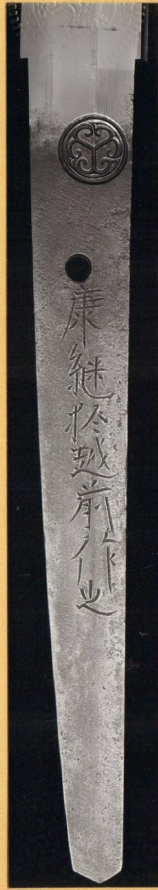
(tsukuru) 作

(kore o) 之



26201403

No 1002311



鑑定書

一 刀 銘 (葵紋) 康継於越前作之 (越前三代)

長 二尺五寸一分弱

右は當協會に於て審査の結果特別保存刀剣と  
鑑定しこれを証する

平成二十六年五月十三日

公益財団法人日本美術刀剣保存協會



東京教育委員会  
第 202132 号  
昭和 52 年 1 月 18 日

## NBTHK Tokubetsu Hozon Certificate of Designation

A sword designated as *Especially Worthy of Conservation*  
by the Society for the Preservation of the Japan Art Sword

Issued in the 26th year of Heisei (2014), May 13th

One, *Katana*

*Mei* (signature)

(*Aoi-mon*) *Yasutsugu Echizen ni oite kore o tsukuru*  
(*Edo Sandai*)

*Nagasa* (length)

2-shaku 5-sun 1-bu jaku (75.9cm)

Nihon Bijutsu Token Hozon Kyokai  
(NBTHK)

26201403

No. 1002309



鑑定書

一脇指銘  
(葵紋)康継以南蛮鉄(江戸三代)  
於武州江戸作之

長一尺七寸八分

右は當協會に於て審査の結果特別保存刀剣と  
鑑定しこれを証する

平成二十六年五月十三日

公益財団法人日本美術刀剣保存協會



東京 教育委員会  
第 209281 号  
昭和 53 年 5 月 19 日

## NBTHK Tokubetsu Hozon Certificate of Designation

A sword designated as *Especially Worthy of Conservation*  
by the Society for the Preservation of the Japan Art Sword

Issued in the 26th year of Heisei (2014), May 13th

One, *Wakizashi*

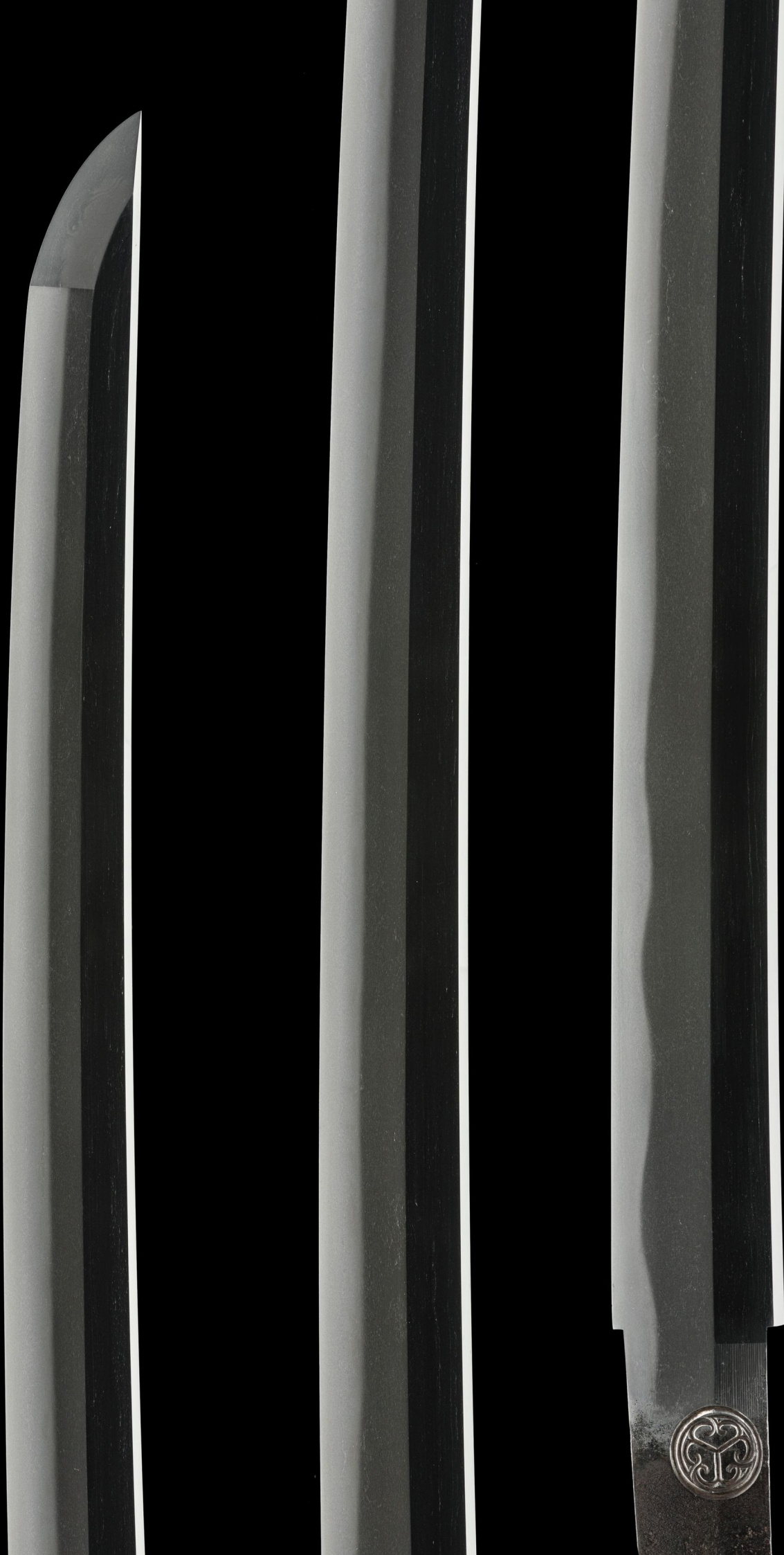
*Mei* (signature)

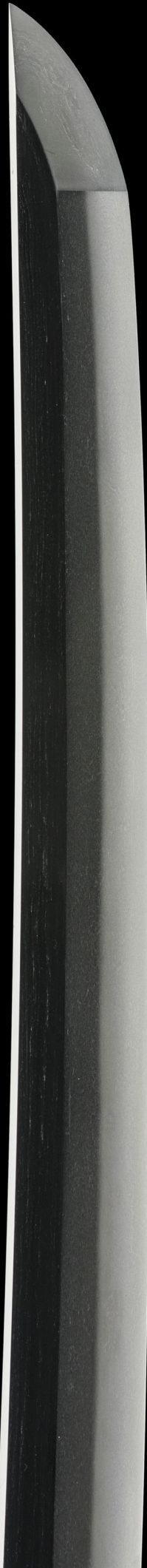
(*Aoi-mon*) *Yasutsugu Nambantetsu o motte (Edo Sandai)*  
*Bushû Edo ni oite kore o tsukuru*

*Nagasa* (length)

1-shaku 7-sun 8-bu (54.0cm)

Nihon Bijutsu Token Hozon Kyokai  
(NBTHK)





A bright *ko-gunome* (tight wavy pattern) zig-zags with confidence along the length of the katana.

The *jihada* is a well-forged *ko-itame hada*.





*Shirasaya*  
(protective scabbard)



gold-wrapped *habaki* with  
straight file marks



康繼於越前作之

*Yasutsugu Echizen ni oite kore o tsukuru*

Crafted by Yasutsugu in Echizen province

越前三代作也

*Echizen sandai saku nari*

3rd generation in Echizen province

刃長貳尺五寸壹分有之

*Hachô 2-shaku 5-sun 1-bu kore ari*

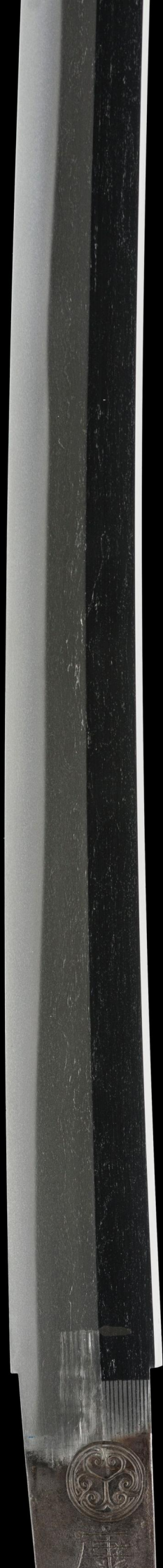
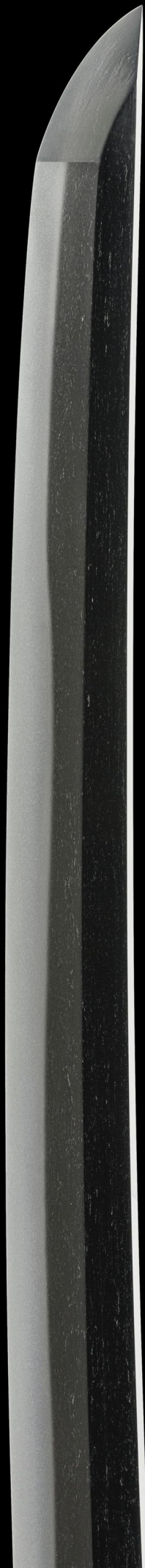
Blade length ~75.9 cm

昭和五拾貳年神無月吉日 寒山誌「花押」

*Shôwa 52 nen Kannazuki kichijitsu Kanzan shirusu + kaô*

Written by Kanzan (Satô Kanzan) on a lucky day in

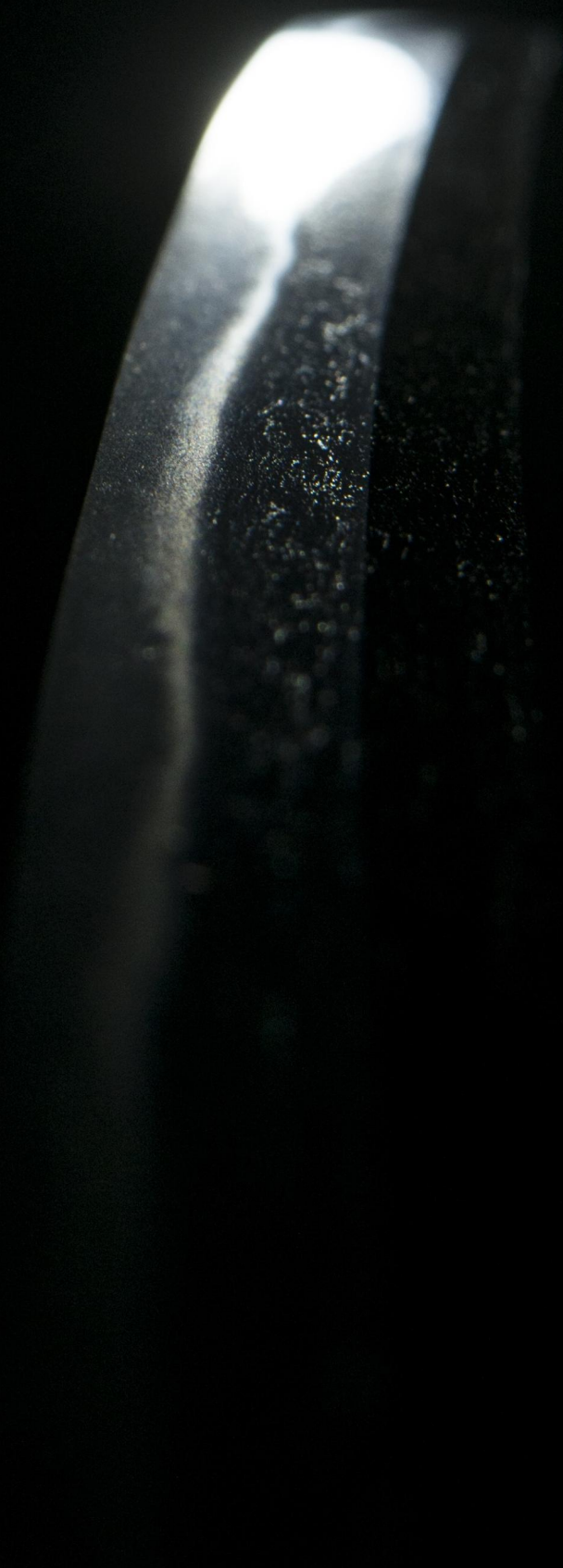
October in Shôwa 52 (1977) + monogram





The *wakizashi* by third generation *Edo Yasutsugu* features a gentle wave hamon (temper line) that is called *notare*.

Note how the hamon shines with a consistent stream of visible *nie* crystals. This is the mark of a top swordsmith.





*Edo (sandai)*

*Shirasaya*  
(protective scabbard)

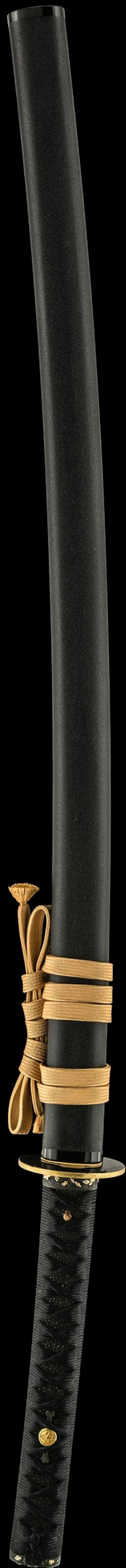


gold-wrapped *habaki* with  
straight file marks

*Kuro-ishime-ji-nuri saya  
daishô uchigatana-koshirae*  
(黒石目地塗大小打刀拵え)

*Daishô uchigatana-koshirae  
lacquered in black with  
unique stone-like texture*

Crafted during the  
Modern period

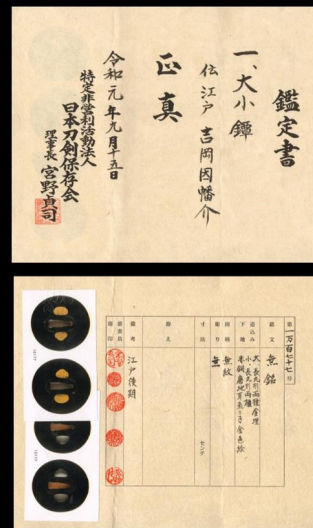


NTHK-NPO Kanteisho  
Certificate of Authenticity

This lovely, understated antique daisho tsuba set has been attributed to the famed *Yoshioka school* from *Edo* (Tokyo). It is made of pure *shakudô* with *nanako* (dotted) rims of gold.

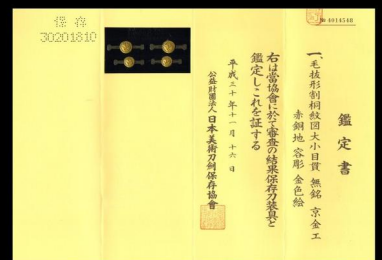
This is a typical set of tsuba that the samurai would use on a formal occasion such as when invited to a daimyô's family castle.

Comes with certification from the NTHK-NPO.





*Daisho menuki* (decorative grips on the hilt) in a tweezers shape with paulownia crests weaved upon black-lacquered *samekawa* (ray skin). These menuki are attributed to *Kyô-Kinkô* (created in cultural capital Kyôto) from the Late Edo period. They have acquired NBTHK Hozon certification.





A samurai's love of nature is found within the beautiful floral design on the *daisho fuchi-kashira*.

Crafted during the late Edo period, early 1800s, certified to the *Mino school* by the the NTHK-NPO.





*Daishô koshirae bags*