



**ITEM# UJDI006**

## A HIZEN TADAHIRO DAISHO

SIGNED, EARLY EDO PERIOD (KANEI TO KANBUN ERA: 1641~1673)

KATANA (DAI)

**Swordsmith:** *Hizen no Kuni Ju Omi Daijo Fujiwara Tadahiro (second generation)*

**Measurements:** **Length:** 72.3cm (ubu)      **Curvature:** 1.3cm

WAKIZASHI (SHO)

**Swordsmith:** *Omi Daijo Fujiwara Tadahiro (second generation)*

**Measurements:** **Length:** 53.8cm (ubu)      **Curvature:** 1.3cm

**Certificates (4x):** NBTHK Tokubetsu Hozon (*both swords awarded*)

NTHK-NPO Kanteisho (*daisho koshirae and daisho tsuba*)

**Authenticity:** Both shirasaya have sayagaki by **Dr. Sato Kanzan** (from 1968 and 1976)

**Fujishiro:** Jojo-saku (*ranked as a highly superior swordsmith*)

**Cutting ability:** O'wazamono (*maker of great sharp swords*)

**Included:** Two shirasayas, daisho koshirae, fabric bags, stands, kit, etc.

**SOLD**

Born *Hashimoto Heishiro* in Saga, Hizen province in 1614, renowned swordsmith second generation (*nidai*) **Tadahiro** began working with his father, maestro *shodai* (first generation) *Tadayoshi* at the tender age of ten. Guided by his father and other great smiths such as *shodai* *Masahiro* and *Yoshinobu*, *Tadahiro* took over leadership of the school at the age of nineteen when his father died in 1632.

Tadahiro then changed his name from *Hashimoto Heishiro* to *Hashimoto Shinsaemon*. Curiously, it is understood that his new name appears on a family document pledging to the *shogunate* that the *Hashimoto family* would not sell swords for export to foreign countries.

As head of the Tadayoshi School, second generation Tadahiro always signed his name Tadahiro and never Tadayoshi. In July of 1641, only nine years after taking over the Tadayoshi School, he was given the honorific title of *Omi Daijo*. He was only 28.

Nidai Tadahiro died at the age of 81 in the sixth year of *Genroku era* or 1693. His works span an incredible 60 years. The sheer quantity and quality of his work makes him one of the most prized artisans, legendary among *Hizen smiths*. He is ranked *Jojo-saku*, a highly superior smith.

---

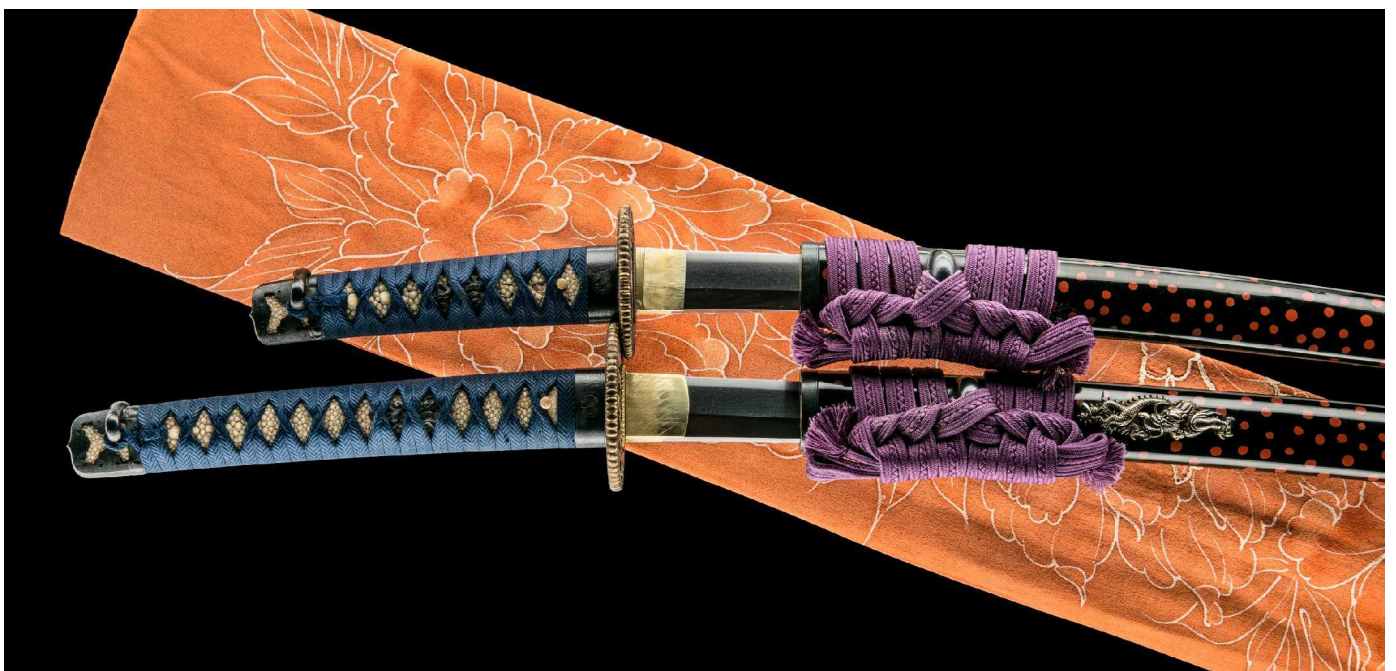
We are delighted to offer a genuine *samurai daisho* from the heart of the Edo period with the two swords having been crafted by this leading swordsmith. The word *daisho* is combination of *dai* meaning 'long/large' (the katana) and *sho* 'short/small' (the wakizashi). The daisho was the official dress code for the samurai.

Both swords feature Tadahiro's masterful and iconic *suguha hamon* that beams like a laser over a *jigane* packed so tightly resulting in the much-desired *konuka hada* that resembles rice bran.

The matching daisho koshirae can be best described as a *party piece*. Upper echelon samurai had daisho for different occasions; while on duty, traditional black scabbards for formal affairs and even eclectic daisho on nights on the town with their favourite geisha...this is one such piece.

Lacquered in black with red polka dots and bright blue *tsukas* (hilts) with the *Ikeda damiyo kamon* (family crest) on the two *fuchi*, there is a serious and playful spirit to this matching set of swords. It's fun and very samurai.

Needless to say, this is a rare find. Nearly all daisho to date have been either separated long ago or exist in poor condition. Both swords have NBTHK Tokubetsu Hozon certification with certificates of authenticity for the koshirae and namban tsuba. All told, this is a highly collectible Edo-period daisho koshirae that will forever light up any home or office. Enjoy.



Saki-kasane: 5.3mm <sup>^</sup>

Moto-kasane: 6.5mm

Omosa: 675g

Saki-haba: 2.0cm

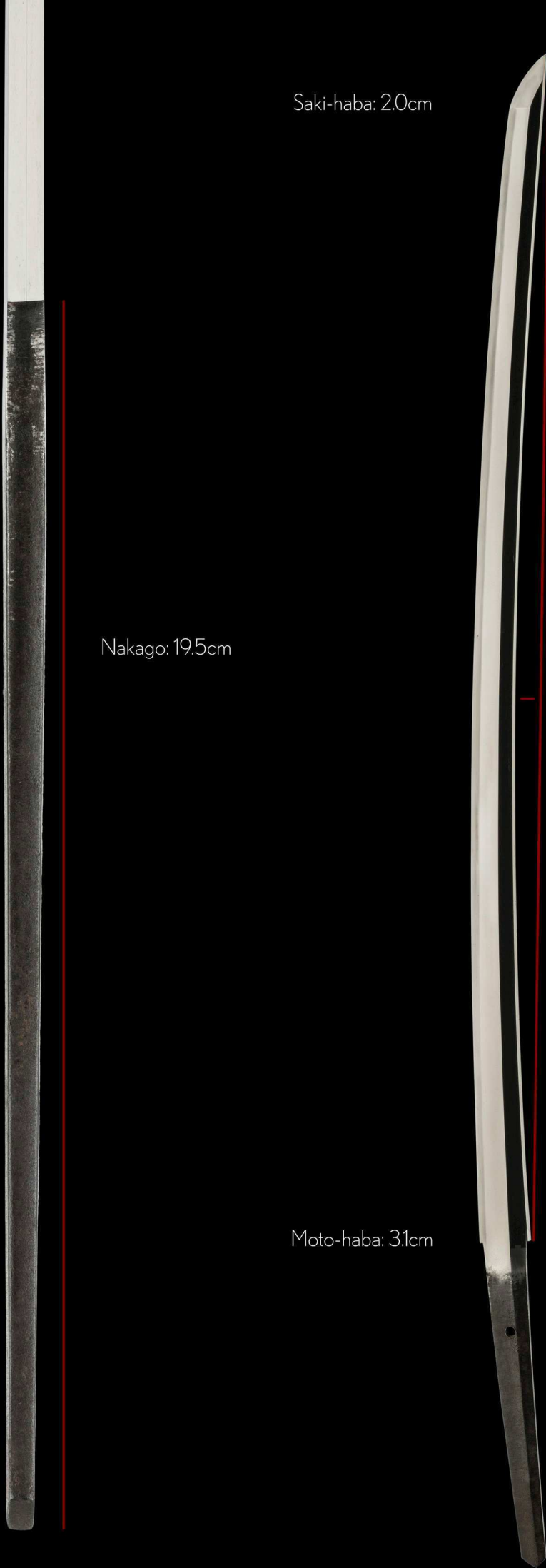
Nakago: 19.5cm

Moto-haba: 3.1cm

Nagasa: 72.3cm

Sori: 1.3cm

Mekugi-ana: 1





Location: *Hizen no Kuni* (Hizen province)

Title: *Omi Daijo* (assistant lord of Omi province)

Clan: *Fujiwara*

Swordsmith: *Tadahiro* [second generation]

Hi  
zen  
(no) kuni  
ju  
O  
mi  
Dai  
jo  
Fuji  
wara  
Tada  
hiro

\*\*note that this katana is signed *tachi-me* whereby the signature is chiselled on the side of the *nakago* that is facing *away* from the samurai when the blade is worn cutting-edge down.

Signing *tachi-me* is a characteristic of the majority of katana (not wakizashi) that were crafted in Hizen province.



特保  
28201501

No 1005050



鑑定書

一 刀 銘 肥前国住近江大掾藤原忠広

長 二尺三寸九分

右は當協會に於て審査の結果特別保存刀劍と  
鑑定しこれを証する

平成二十八年三月二十三日

公益財団法人日本美術刀劍保存協會



北海道 教育委員会  
第 186 号  
昭和26年 5月24日

## NBTHK Tokubetsu Hozon Certificate of Designation

A sword designated as *Especially Worthy of Conservation*  
by the Society for the Preservation of the Japan Art Sword

Issued in the 28th year of Heisei (2016), March 23rd

One, Katana

*Mei* (signature)

*Hizen no Kuni Ju Oumi Daijo Fujiwara Tadahiro*

*Nagasa* (length)

2-shaku 3-sun 9-bu (72.3cm)

Nihon Bijutsu Token Hozon Kyokai  
(NBTHK)



Hizen

(no)Kuni ju

Omi Daijo

Fujiwara

Tadahiro

*Dousaku chu Kasaku Nari Suguha Hataraki Houfu*

Good quality work by Tadahiro. *Suguha* (straight) temper line, with plentiful *hataraki* (activity)


*Nagasa 2-shaku 3-sun 8-bu ari kore (72.3cm)*

*Showa 51-nen Satsuki Kichijitsu*

(a good day in May 1976)

*Kanzan (kaou)*

signed by Dr. Kanzan Sato sensei with his personal seal

A close-up photograph of a katana blade, showing the intricate patterns of the steel grain. The blade is dark, with a bright, curved edge on the right side. The grain is composed of fine, dark, swirling patterns of nie crystals, known as chikei, set against a lighter, more uniform background of refined steel grain, known as mokume-hada. The lighting is dramatic, highlighting the texture and depth of the patterns.

Tight *mokume-hada* with *chikei*  
(dark swirls of nie crystals).

This type of refined steel grain is known as *konuka-hada* (rice bran), typically seen on Hizen blades.

*chikei*

Two red lines originate from the text 'chikei' and point to the dark, swirling patterns of nie crystals in the blade's grain.

(katana)

A smooth and consistent *suguha*  
(straight) hamon.

This is classic work by *Jojo-saku*  
(highly superior swordsmith)  
second generation *Hizen Tadahiro*.





tiny *ashi* (legs) flirt with the edge of the blade.

Saki-kasane: 4.8mm <sup>^</sup>

Moto-kasane: 6.9mm

Omosa: 570g

Saki-haba: 2.1cm

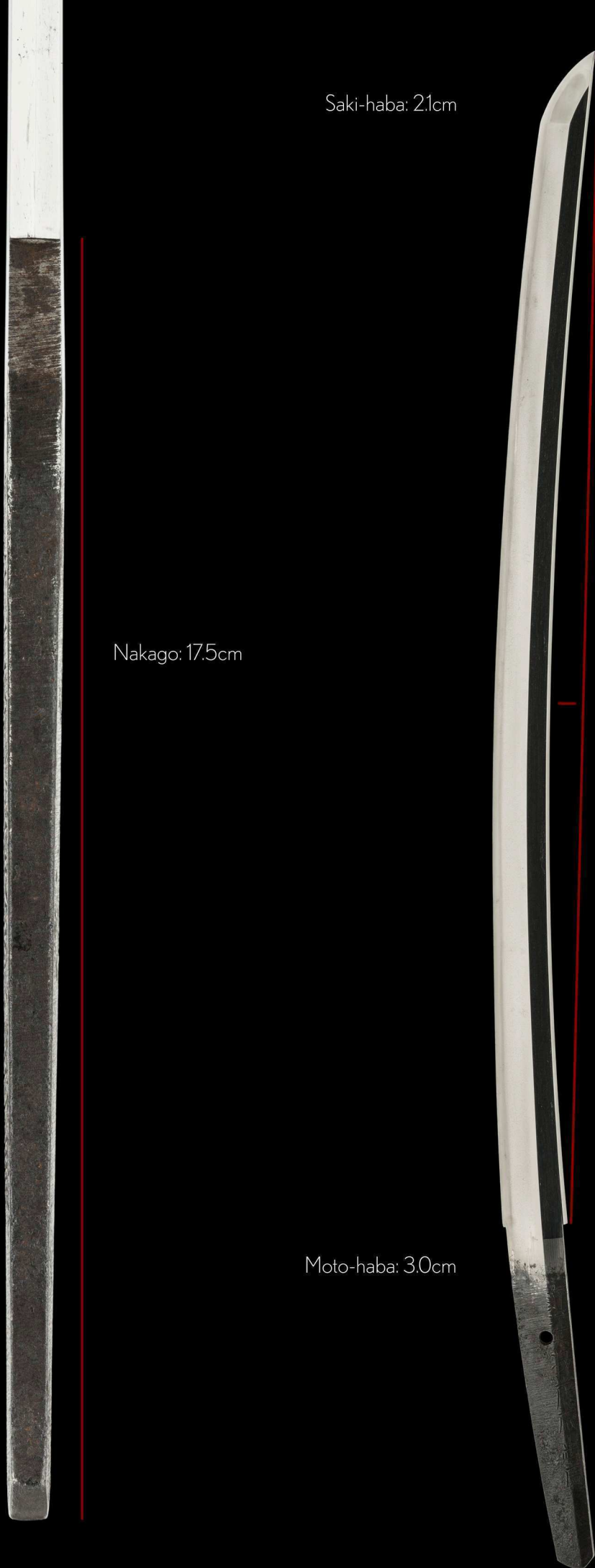
Nakago: 17.5cm

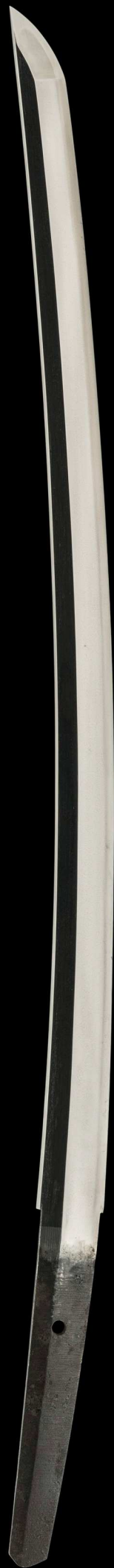
Moto-haba: 3.0cm

Nagasa: 53.8cm

Sori: 1.3cm

Mekugi-ana: 1





Title: *Omi Daijo* (assistant lord of Omi province)

Clan: *Fujiwara*

Swordsmith: *Tadahiro* [second generation]



Ou

mi

Dai

jo

Fuji

wara

Tada

hiro

特 保  
26201505

No 1005834



鑑定書

一、脇指 銘 近江大掾藤原忠広

長一又七寸七分半

右は當協會に於て審査の結果特別保存刀劍と  
鑑定しこれを証する

平成二十八年七月二十一日

公益財団法人日本美術刀劍保存協會



三重 教育委員会

第 16111 号

昭和38年 9月 25日

平成25年 2月 8日

## NBTHK Tokubetsu Hozon Certificate of Designation

A sword designated as *Especially Worthy of Conservation*  
by the Society for the Preservation of the Japan Art Sword

Issued in the 28th year of Heisei (2016), July 21st

One, Wakizashi

Mei (signature)

*Oumi Daijo Fujiwara Tadahiro*

Nagasa (length)

1-shaku 7-sun 7-bu han (53.8cm)

Nihon Bijutsu Token Hozon Kyokai  
(NBTHK)



Hizen  
(no) kuni  
Omi  
Daijo  
Fujiwara  
Tadahiro

*Suguha deki (straight temper line)*

*Nagasa 1-shaku 7-sun 9-bu (53.8cm)*

*Showa Kenen Chushun*  
(spring 1968)

*Kanzan (kaou)*  
signed by Dr. Kanzan Sato sensei with his personal seal

The hamon in the tip of the sword is called the *boshi*. The boshi on both the katana and wakizashi is *ko-maru*, which translates to 'small curl-back'.

This type of boshi is common on *Hizen-to* (swords of Hizen province).



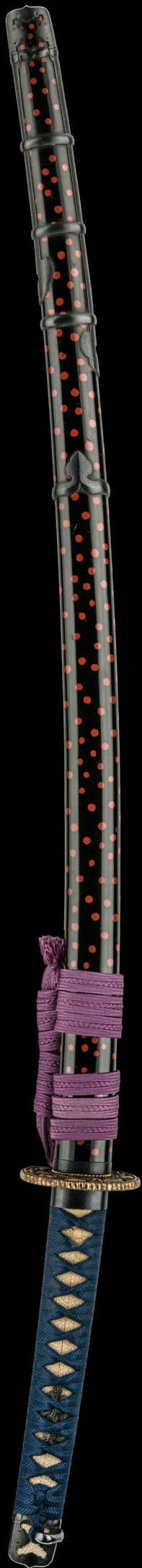
(wakizashi)

Whether the *hamon* (temper line) is *midare* (wavy) or *suguha* (straight), a good quality sword will always display a clean consistency in the *nioguchi* (the band of crystals that make up the hamon).



*bright nioguchi*

katana (dai)  
koshirae



wakizashi (sho)  
koshirae





polka dots amongst *handachi* fittings  
securing the *saya* (scabbard).



Mizuno Toshikata (Samurai and Geisha, circa 1910)

Wealthy samurai would have daisho koshirae to meet specific occasions. On formal events such as a wedding, classic black-lacquered daisho koshirae with matching Goto family fittings was traditional wear.

When it came to a night on the town, more playful daisho koshirae was often entertained by the samurai. This black and red polka dot Tadahiro daisho koshirae is a wonderful example of such festive fun. Note the similarity of the black and red striped koshirae in the above ukiyo-e print of a samurai and a music-playing *geisha*.





This striking set of *daisho tsuba* are in the shape of *kiku* (chrysanthemums) with a design of fire and twin dragons. They are crafted of polished iron with gold inlay.

Referred collectively as *namban tsuba* meaning "southern barbarian sword-guards", these tsuba show an imported artistic influence. They were in high-fashion during the middle Edo period. This set has NTHK-NPO Kanteisho certification.

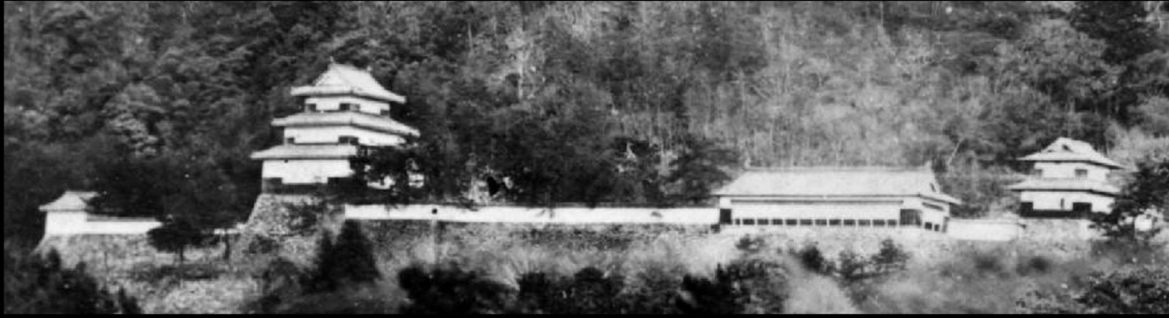




On the matching fuchi of this daisho koshirae is the famous *cho-kamon* (butterfly crest) of the notable *Ikeda daimyo family*. As this daisho has been dated to the mid-Edo period (1700s) during the heart of the Edo period, we can confidently state that this daisho was carried by a ranking member of this powerful samurai clan.

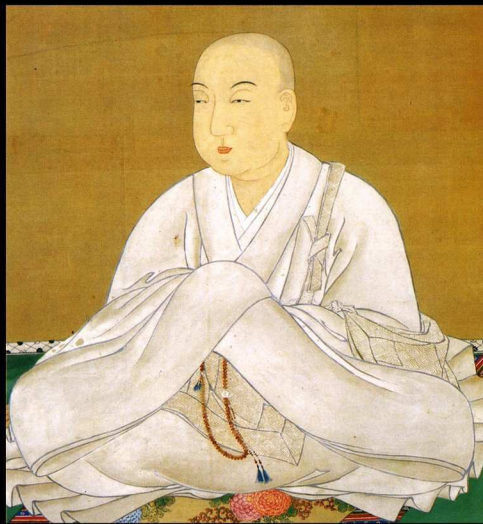


*Ikeda Tokumasa* - former Lord of the Ikeda clan (1638-1714)



Tottori castle was the central castle of the *Ikeda* clan in feudal Japan. Being a *yamashiro*, or "mountain-castle", it was built into the mountain itself, using natural obstacles and defences to a greater extent than man-made walls.

The Ikeda family are said to be descendants of the *Seiwa Genji* - a line of the *Minamoto clan* that is descended from *Emperor Seiwa* who was the 56th emperor of Japan from 858 to 876.



*Emperor Seiwa*

Many of the most famous Minamoto warriors, including *Minamoto no Yoshiie*, *Minamoto no Yoritomo*, the founder of the Kamakura shogunate and *Ashikaga Takauji*, the founder of the Ashikaga shogunate, belonged to this line.

*Tokugawa Ieyasu* (1543-1616), founder of the Tokugawa shogunate, also claimed descent from this lineage.



*Menuki* (decorative grips on the hilt) display crawling dragons. Dragons are also seen on the *tsubas* and fixed on the katana *saya* (scabbard) itself.



## In good hands

The unique clasps on the kashira are matching carved depictions of the gentle holding of hands.

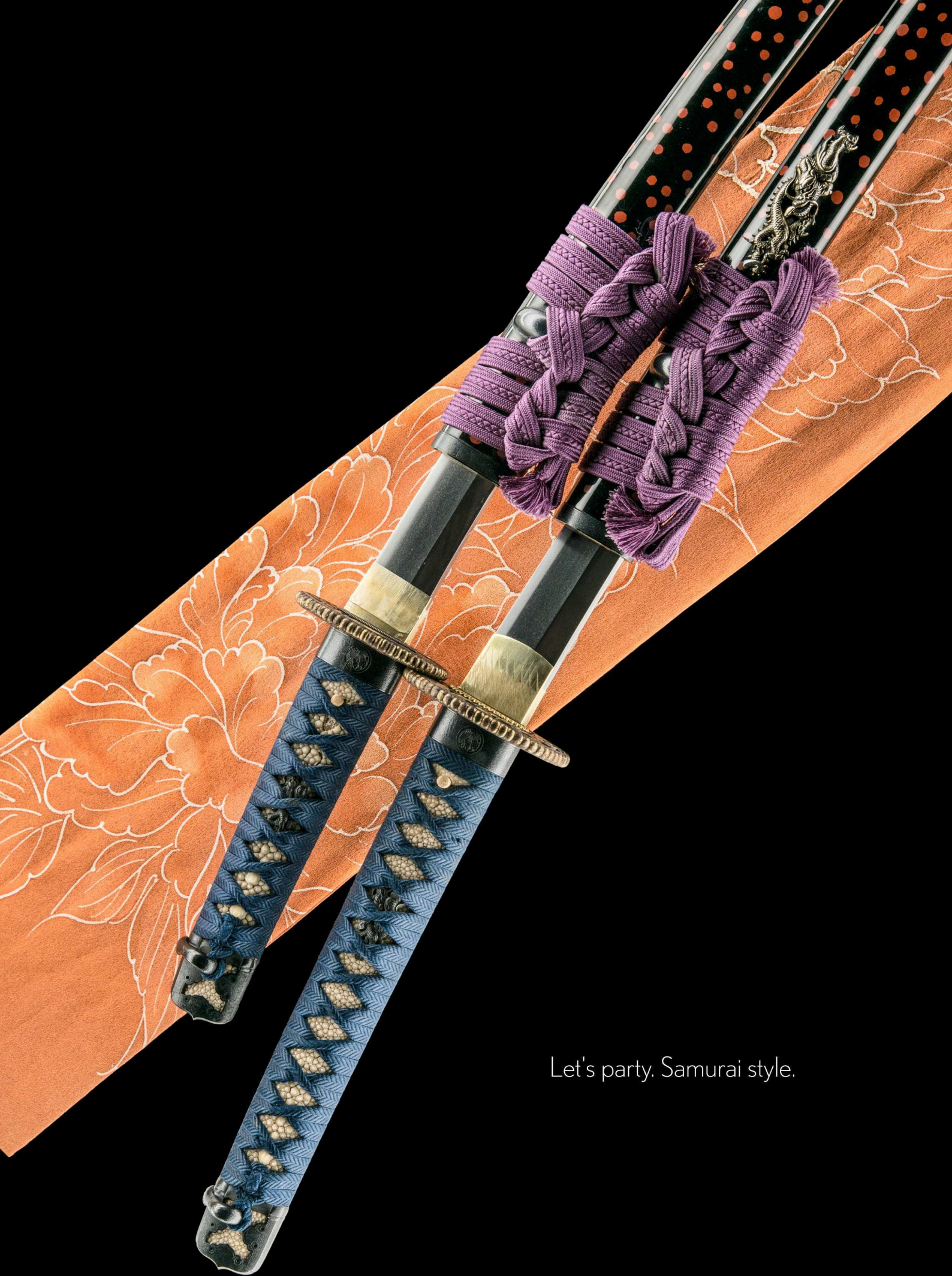




Nestled neatly in the wakizashi *saya* (scabbard) is a *kozuka* - a small utility knife.

A *kozuka* was used by the samurai to open letters, cut fruit, fix shoes, etc. It was not a weapon per se.

The design is of the emergence of spring depicting *ume* (plum) blossoms.



Let's party. Samurai style.

## Thinking about how to best display?

Clients can select from one of three types of complimentary sword stands to proudly showcase their work of art.



traditional double-hook black wood sword stand



acrylic 'floating' type



small stand for tanto